



Omaker M4 Port Cover Replacement

The Port Cover helps preventing water splashing...

Written By: Obaida Matar



INTRODUCTION

The Port Cover helps preventing water splashing inside the charging and AUX port. It is important to keep the cover in good shape to prevent damaging the internal components.

TOOLS:

Magnetic Pickup Tool (1)

T6 Torx Screwdriver (1)

Tweezers (1)

Step 1 — Back Case



- Flip the device over so the front of the speaker is facing down. Make sure to place the speaker on a flat surface

Step 2



- Use a T6 Torx screwdriver to remove the four 9mm screws from the back of the device.

Step 3



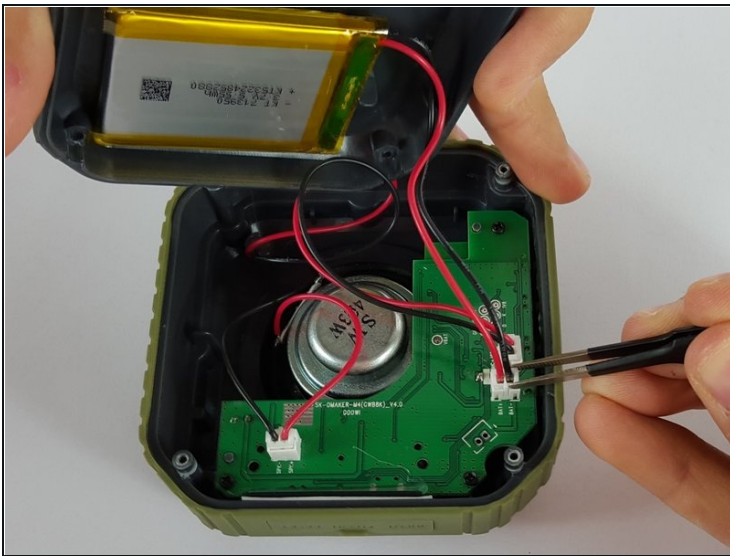
- Use a magnet to remove the screws after unscrewing them and place them aside.

Step 4



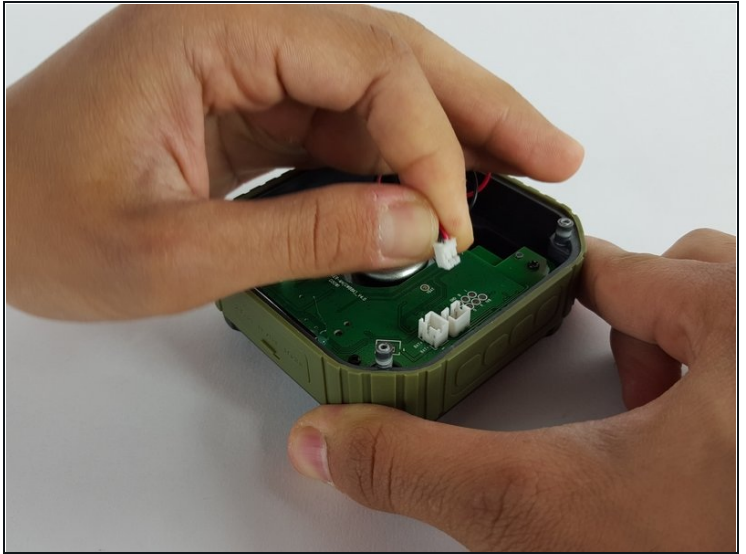
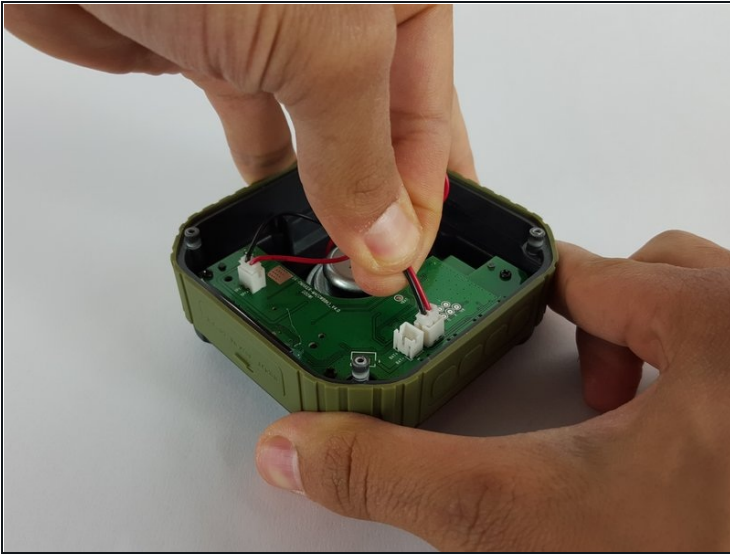
- Carefully remove the back cover without breaking the battery wire.

Step 5



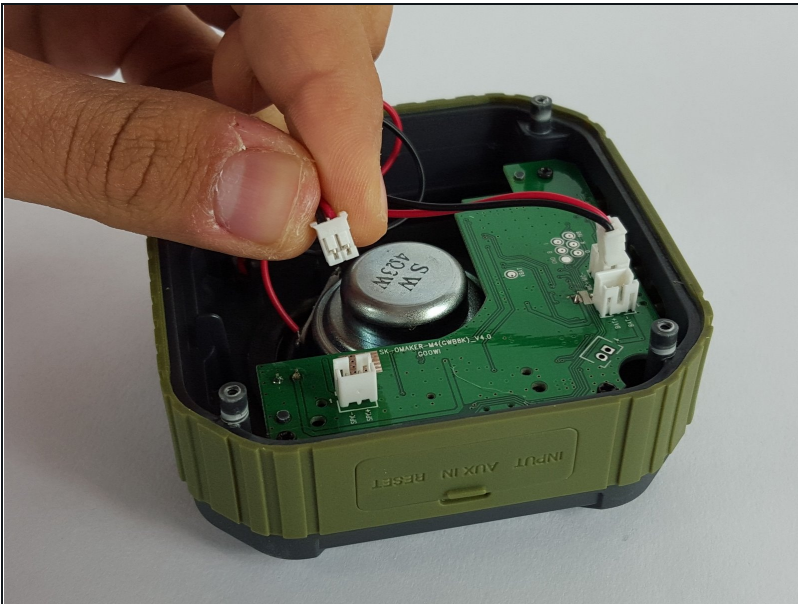
- Remove the end of the battery connection from the motherboard by holding the end of the wire and carefully pulling it out of the socket using [tweezers](#).
- ① The battery is still attached to the back cover.

Step 6 — Motherboard



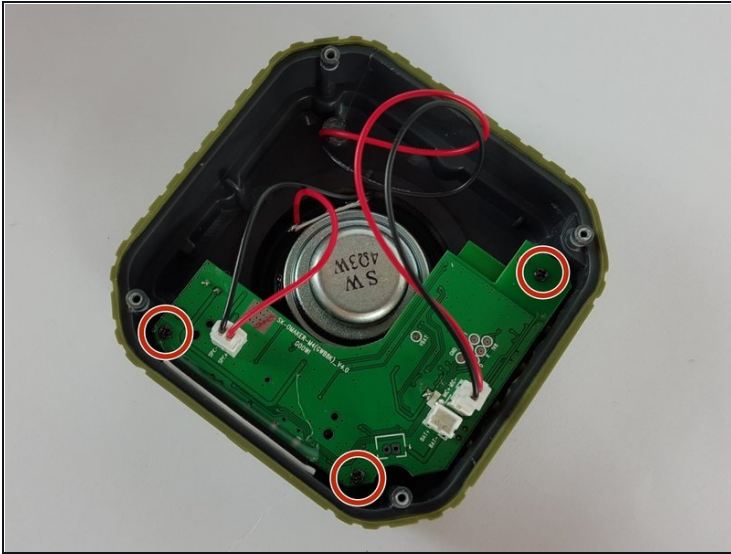
- Remove the mic wire by carefully pulling the plug out of the socket.

Step 7



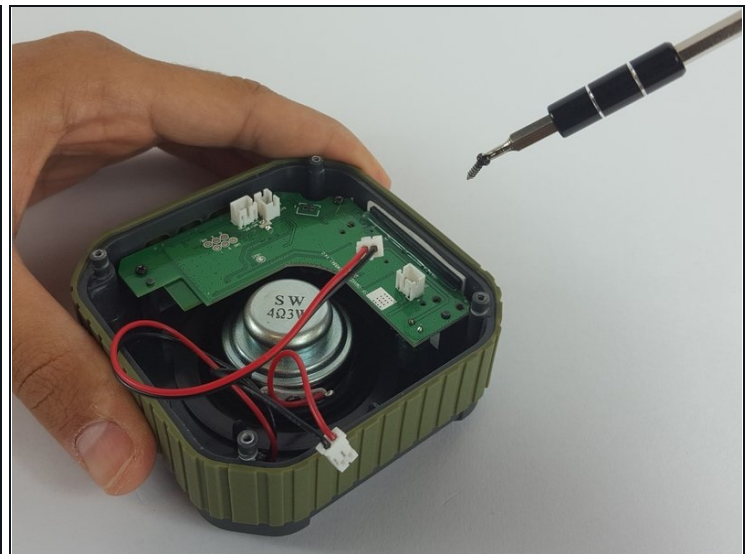
- Remove the speaker wire by carefully pulling the plug out of the socket on the motherboard.

Step 8



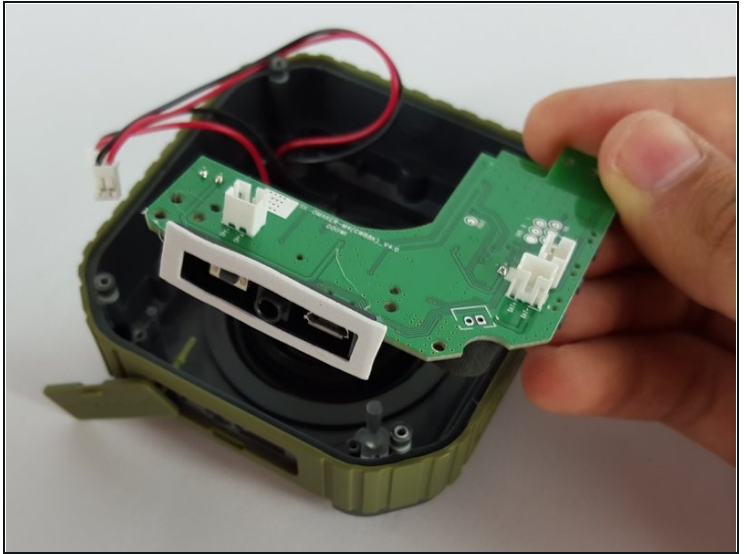
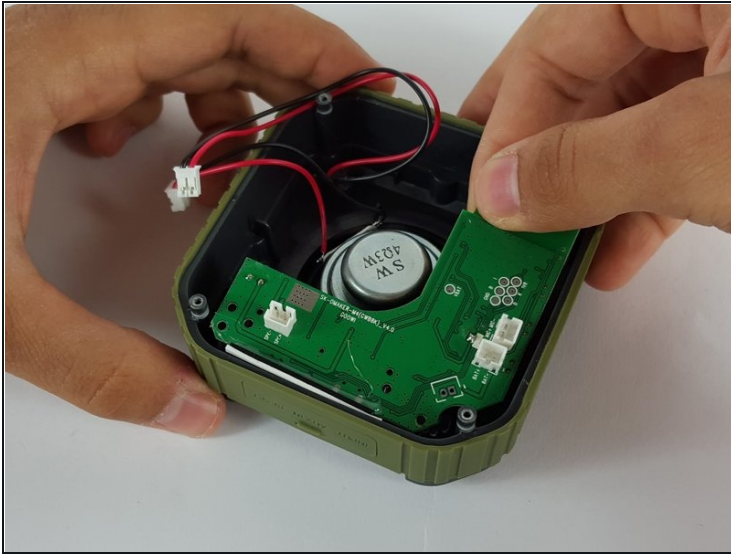
- Use Phillips PH00 screwdriver to remove the three screws holding the motherboard in place.

Step 9



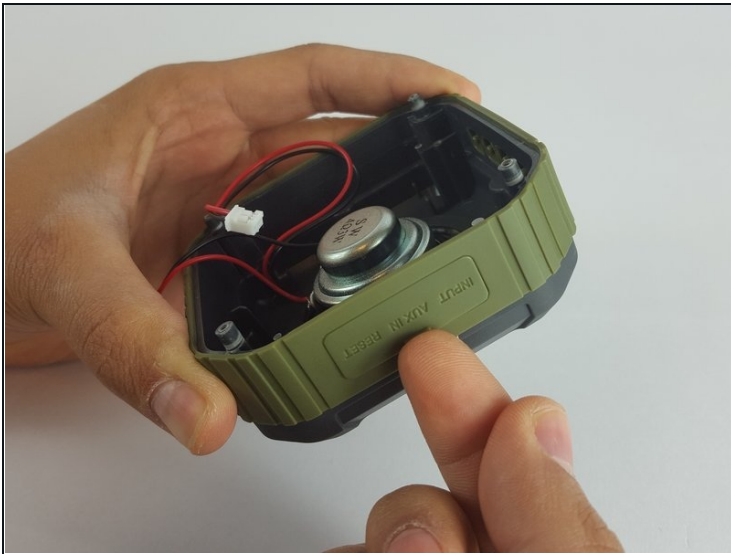
- Remove the screws using the screwdriver.
- ① Since the screws that hold the motherboard in place are smaller, the screwdriver is able to pick them up.

Step 10



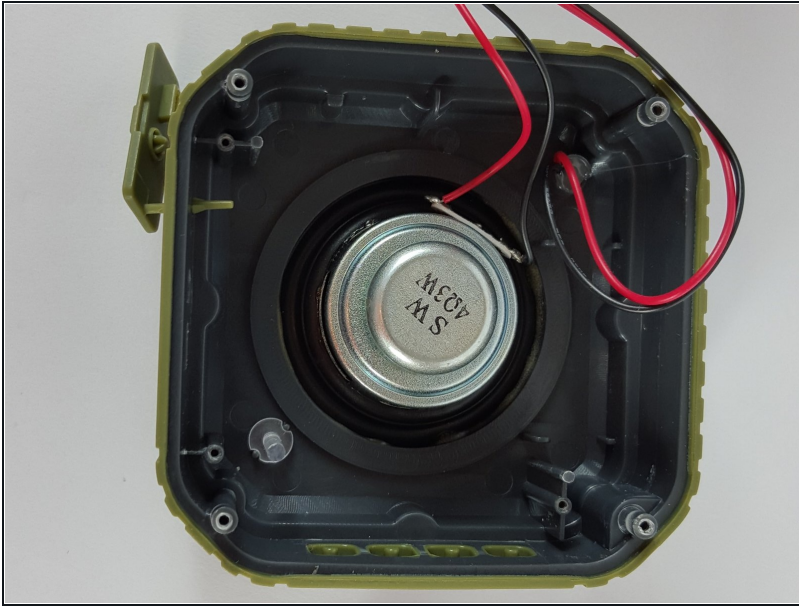
- Carefully remove the motherboard with your hand by lifting it from the device.

Step 11 — Port Cover



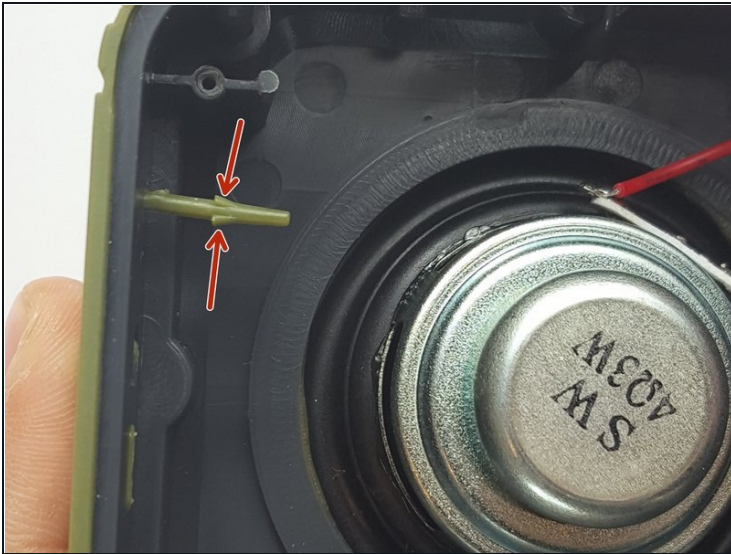
- Separate the port cover from the device using your hands.

Step 12



- Orient the device so the port cover is on your left.

Step 13



- Using [Tweezers](#), pinch the larger part of the stem

Step 14



- Use your left hand to pull while at the same time use the tweezers to compress the stem, carefully remove the port cover from the device.

To reassemble your device, follow these instructions in reverse order.