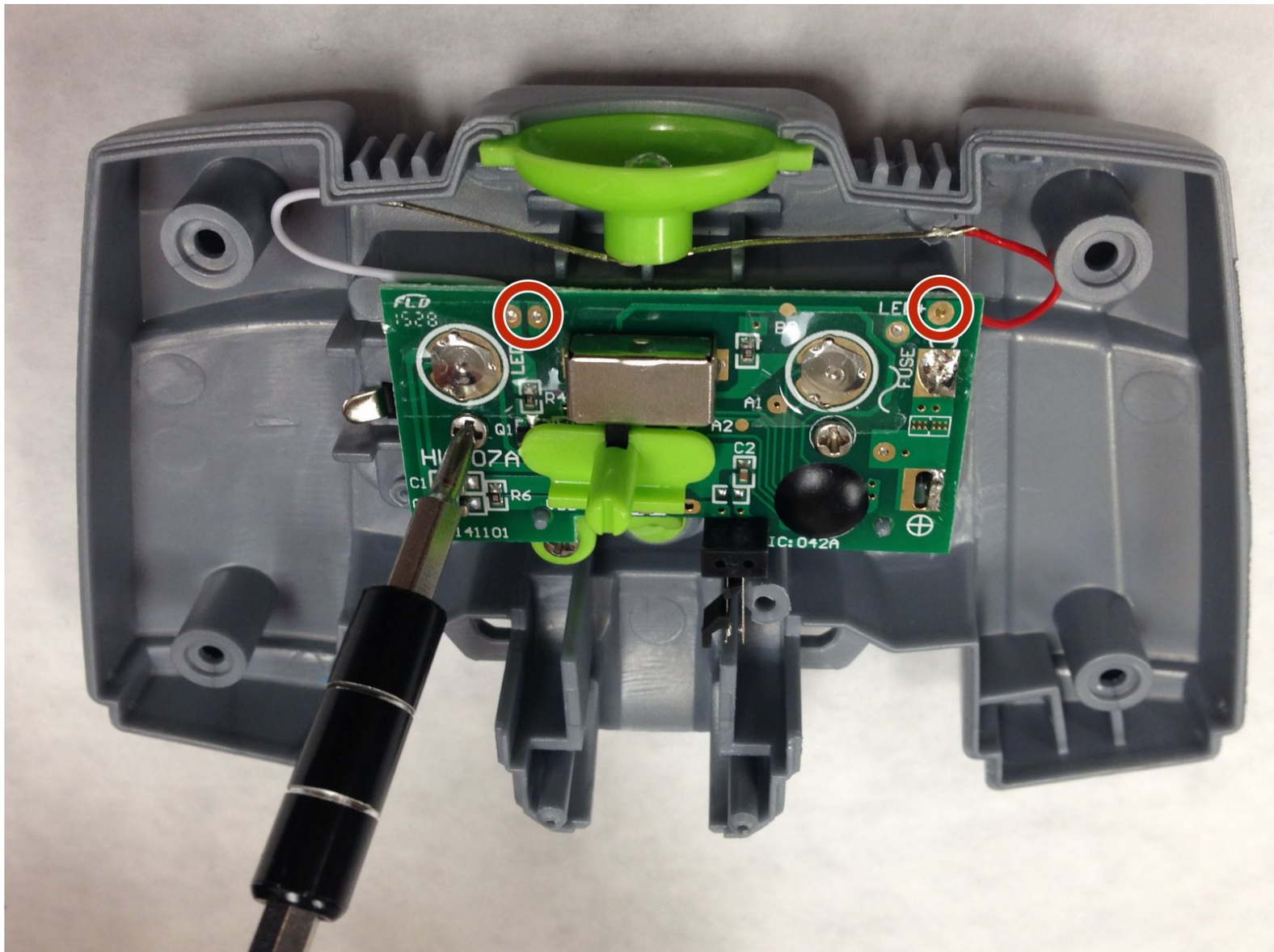




Air Hog Smash Bots Controller Motherboard Replacement

This guide will describe how to replace the motherboard in the controller.

Written By: Brittany Frecker



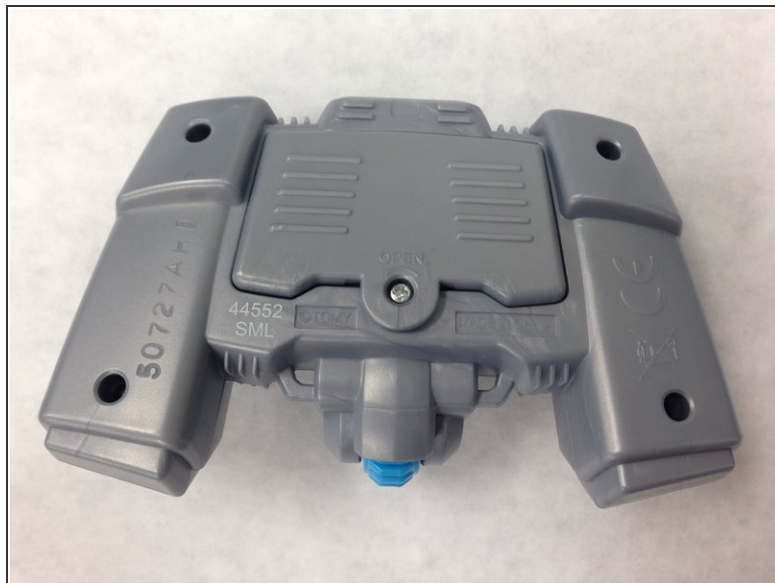
INTRODUCTION

This guide will describe how to replace the motherboard in the controller.

TOOLS:

- [64 Bit Driver Kit](#) (1)
 - [4mm Nut Driver](#) (1)
 - [8mm Socket Wrench Screwdriver](#) (1)
 - [Spudger](#) (1)
-

Step 1 — Front Panel



- Take out your controller and access to the back of the controller.

Step 2



- Remove the screw on the battery lid. Using the Hex 4 socket and PH #0 bit, remove the 8 mm screw.

Step 3



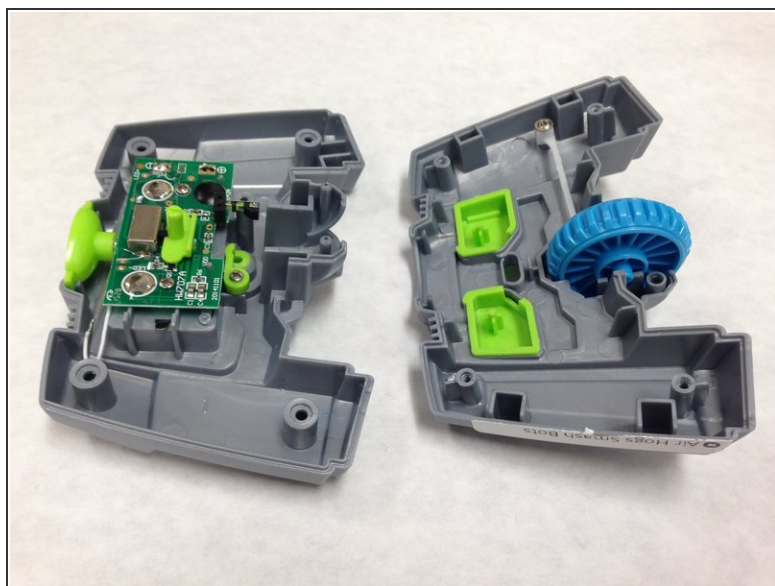
- Remove the 2 AAA batteries.

Step 4



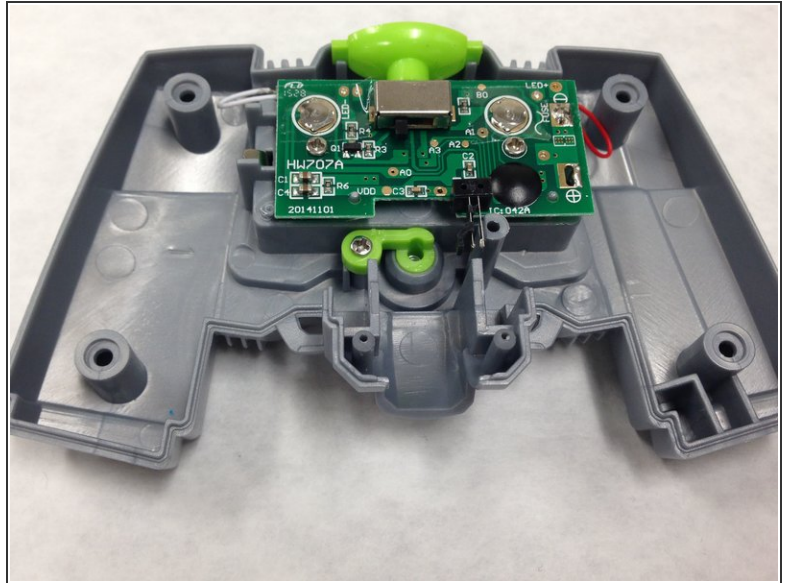
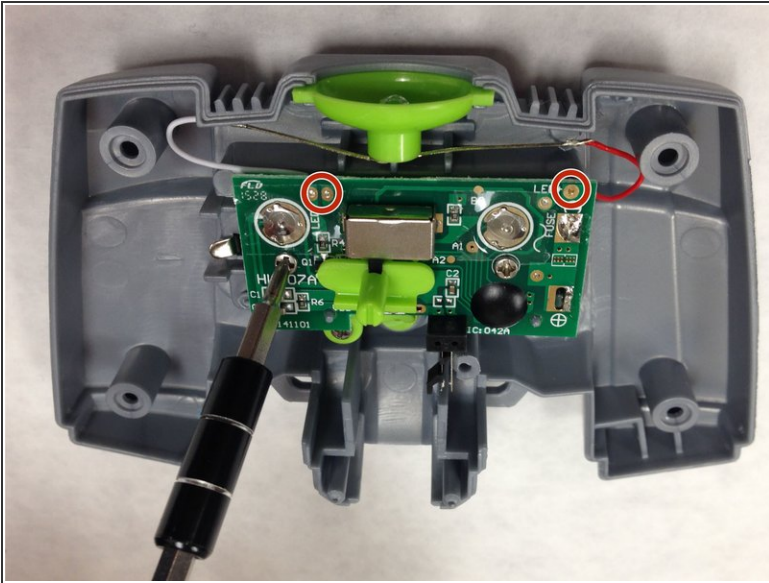
- Using the Hex 4 socket and PH #0 bit, remove the four 8 mm screws on the panel.

Step 5



- Use the plastic opening tool to disconnect the front and back parts of the panel.
- ⓘ Some of the internal components may be displaced when opening the controller.

Step 6 — Controller Motherboard



- Using the PH #0 bit, remove two 8 mm screws on the main board.
- De-solder the LED wires from the motherboard.
- Lift the motherboard with a spudger to remove it from the case.

To reassemble your device, follow these instructions in reverse order.