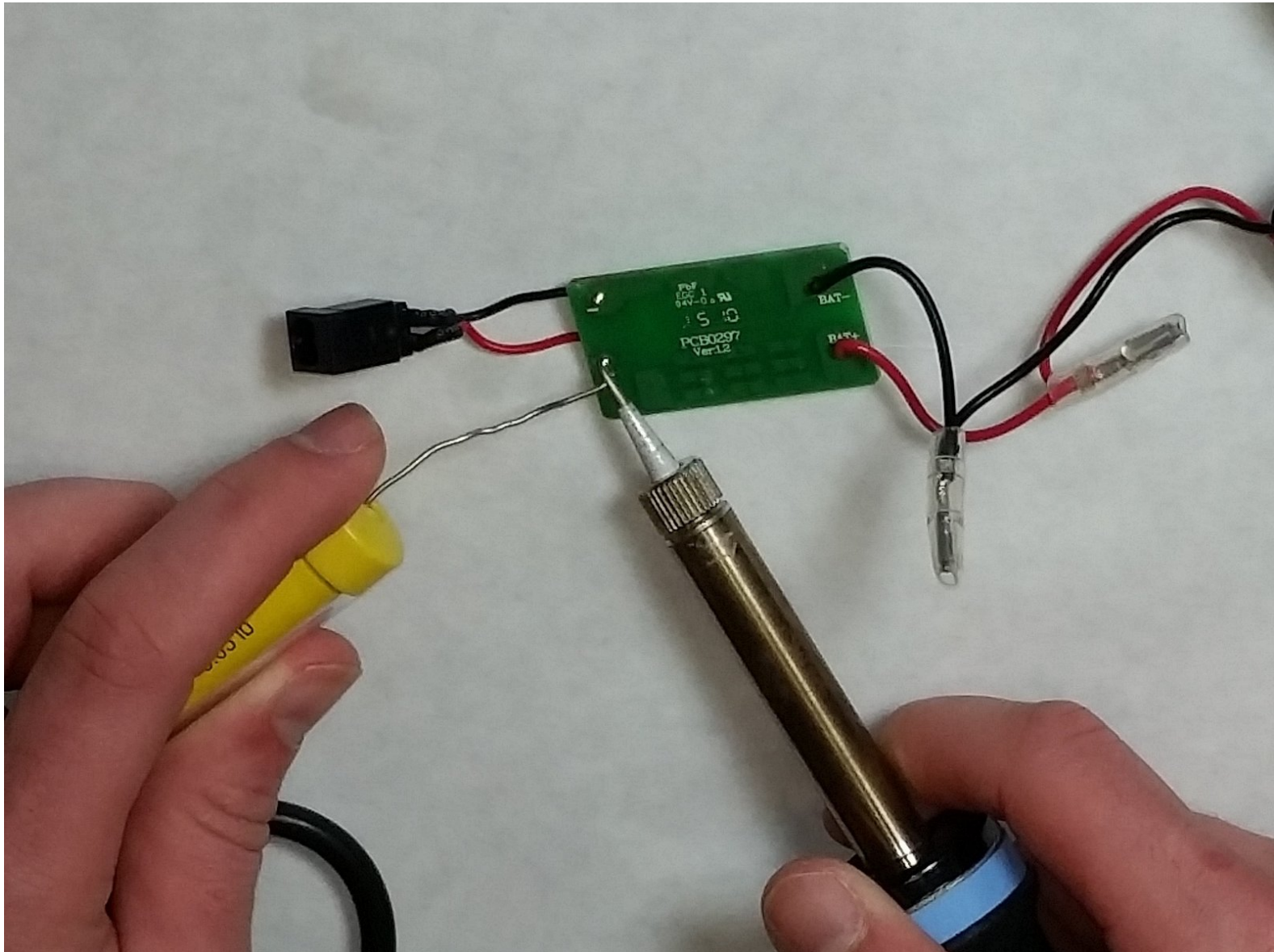




Black and Decker LI2000 Circuit Board Replacement

Replace the circuit board.

Written By: Katherine Simmons



INTRODUCTION

Use this guide to remove or replace the circuit board in your Black and Decker LI2000.

TOOLS:

- [Phillips #000 Screwdriver](#) (1)
 - [Phillips #1 Screwdriver](#) (1)
 - [iFixit Opening Tools](#) (1)
 - [Solder](#) (1)
 - [Soldering Iron](#) (1)
-

Step 1 — Orange Casing



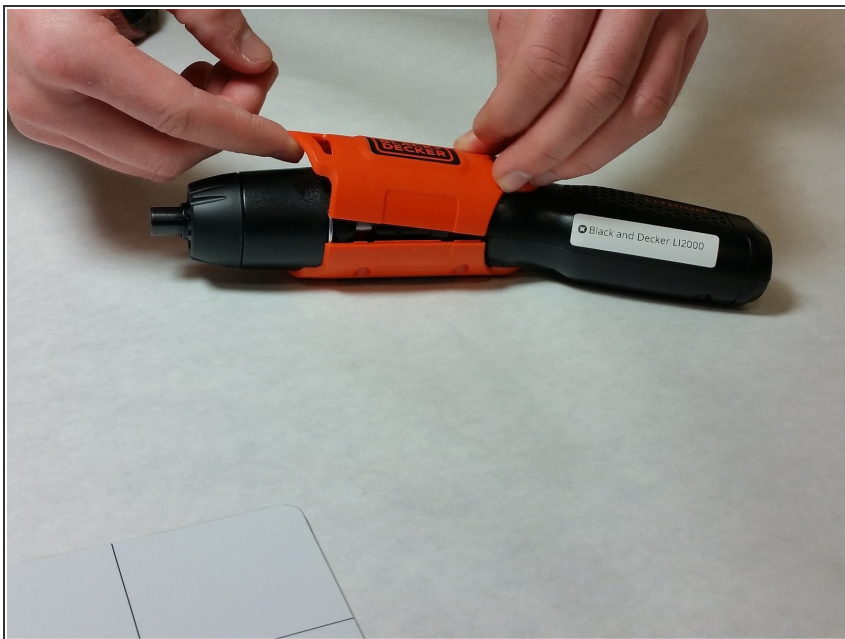
- Remove the following five screws
 - Three 20 mm Phillips #1 screws
 - One 10 mm #000 Phillips screw
 - One 13 mm Phillips 31 screw
- ⚠ When you remove the 13 mm screw, the spring may pop out of the screwdriver. Point the backside of the screwdriver away from your face and others.

Step 2



- Remove the black sticker with recycling information.

Step 3



- Use your fingers or a plastic opening tool to pry the casing apart.

Step 4



- Remove the plastic slider by picking it up off the screwdriver.
- ⓘ You may consider leaving half of the casing on the screwdriver to make handling the screwdriver easier.

Step 5 — Handle



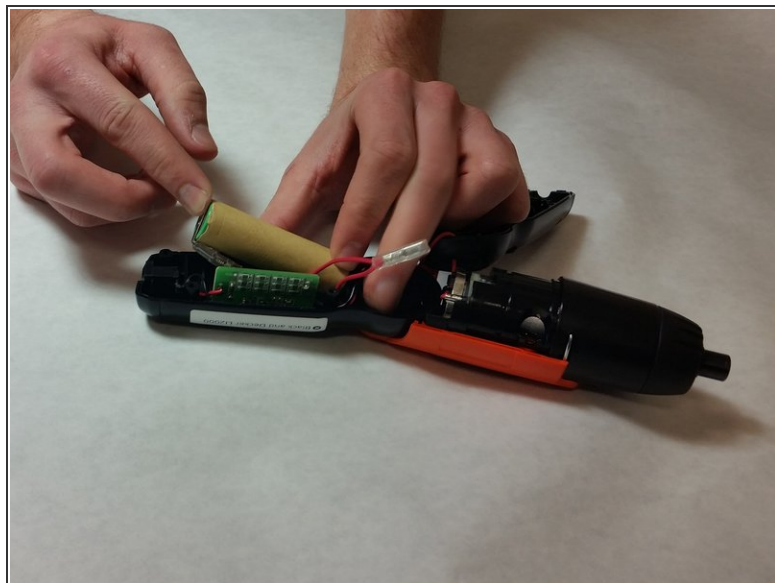
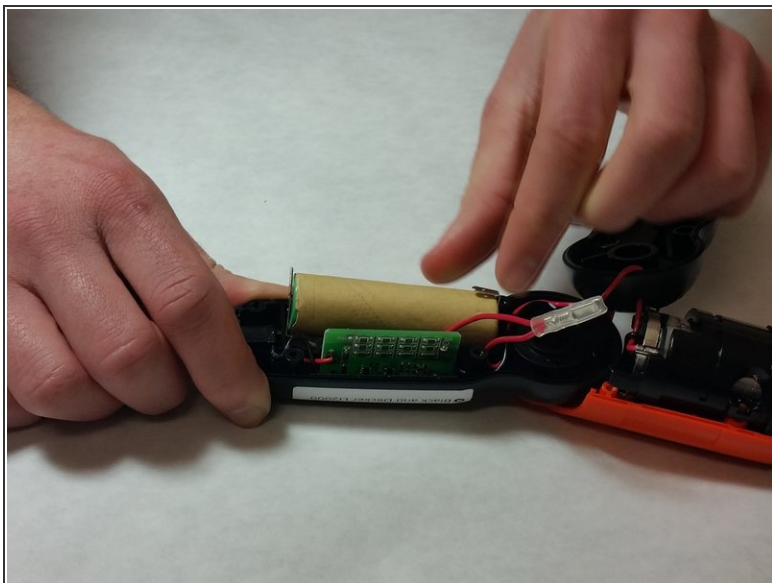
- Remove the four 15mm Phillips #1 screws.

Step 6



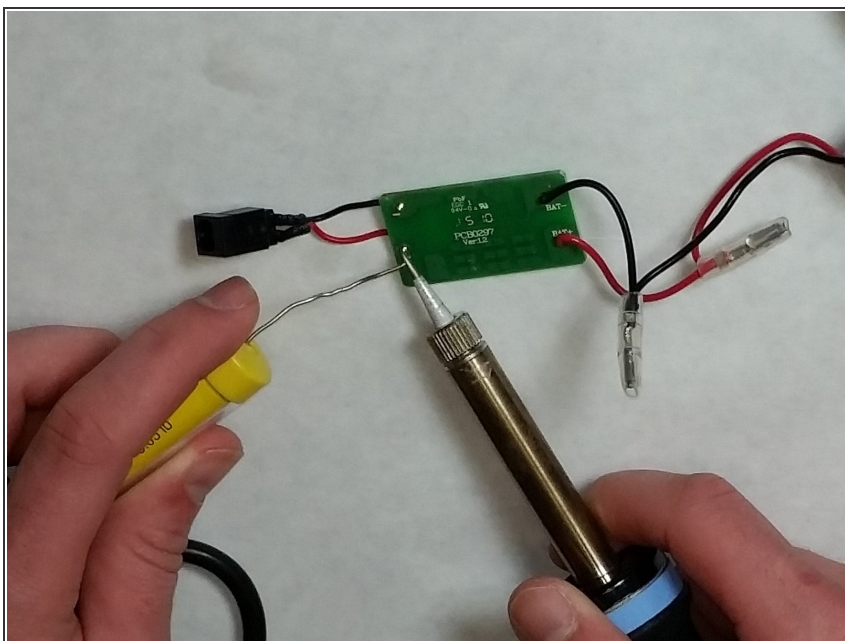
- Use a plastic opening tool to pry the casing apart.

Step 7 — Battery



- Using pliers or your fingers, remove the leads off of the battery.

Step 8 — Circuit Board

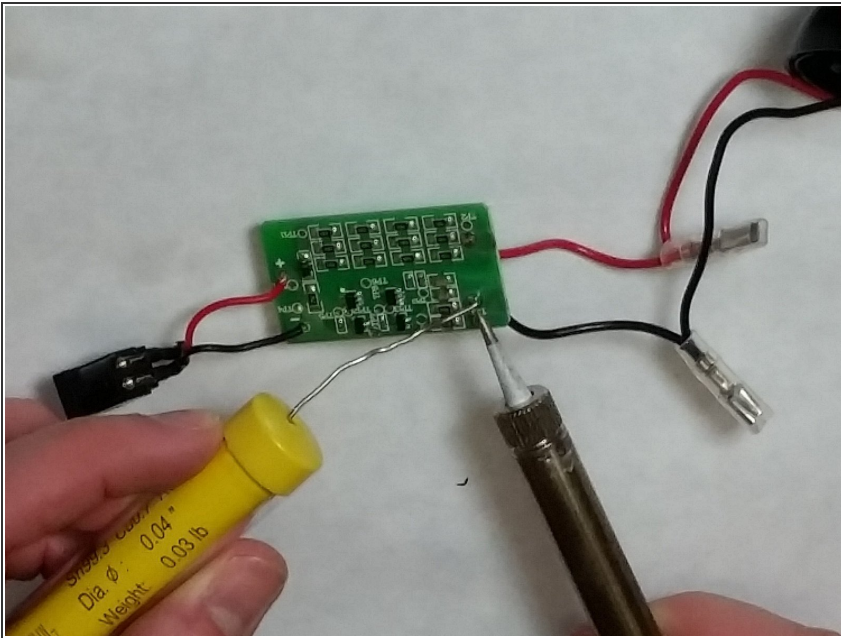


- Refer to the [Soldering Technique Guide](#) to remove the wires on the circuit board that connect the

charging adapter by applying heat from iron to existing solder on the board.

- ① Keep track of which wire connected to which part of the board.

Step 9



- Refer to the [Soldering Technique Guide](#) to remove the wires from the circuit board that connect to the battery by heating the existing solder on the leads.
- ① Keep track of which wire was connected to which part of the circuit board.

To reassemble your device, follow these instructions in reverse order.