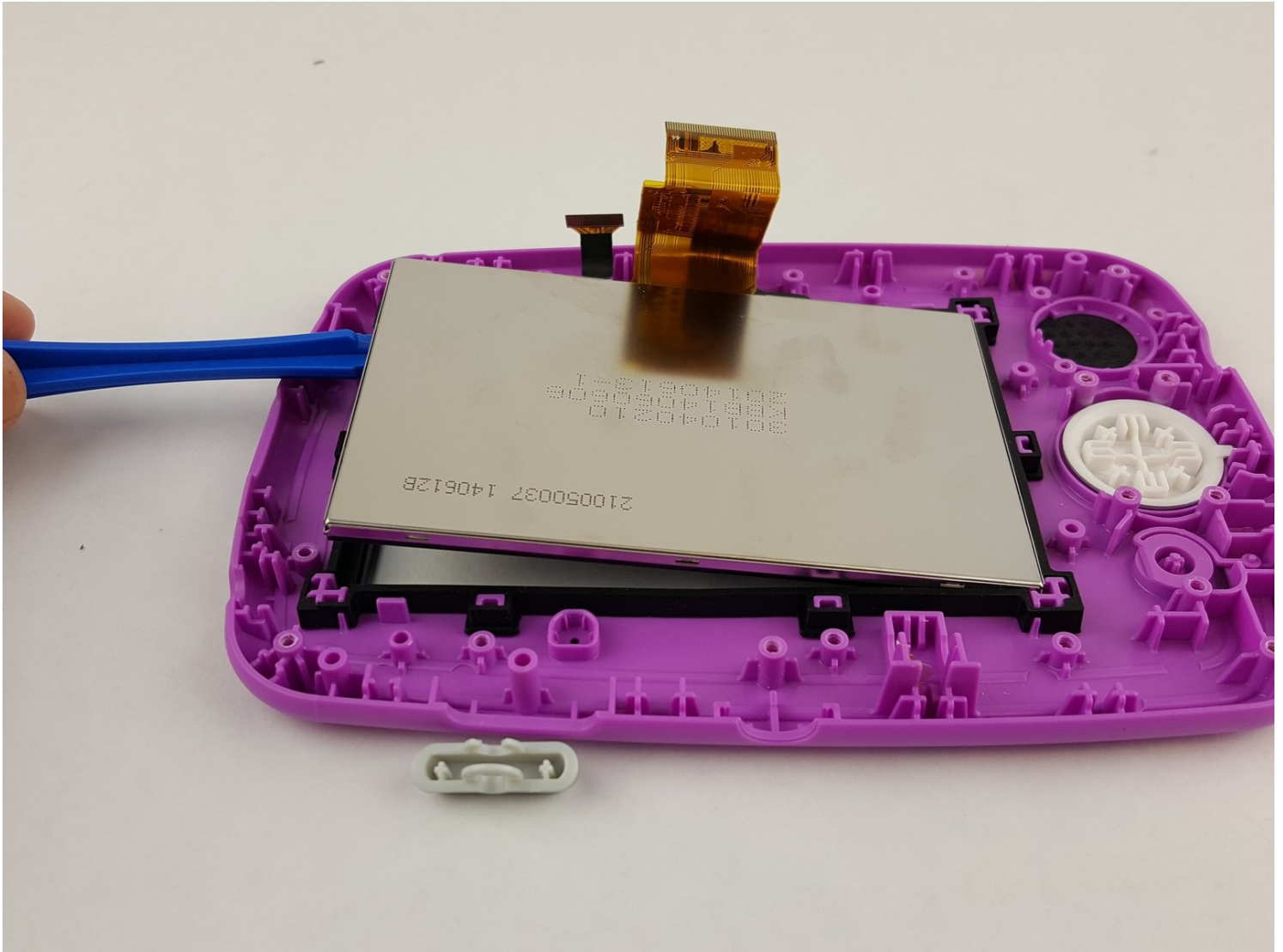




Leapfrog LeapPad 3 Display Assembly Replacement

If your display assembly is scratched or not...

Written By: Matt Irvine



INTRODUCTION

If your display assembly is scratched or not working properly this is the appropriate guide to get the issue resolved. It is a rather lengthy, however, it is complete and few tools are needed.

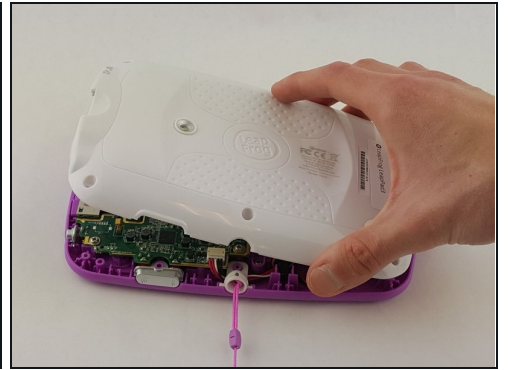
TOOLS:

[Anti-Static Wrist Strap](#) (1)

[iFixit Opening Tool](#) (1)

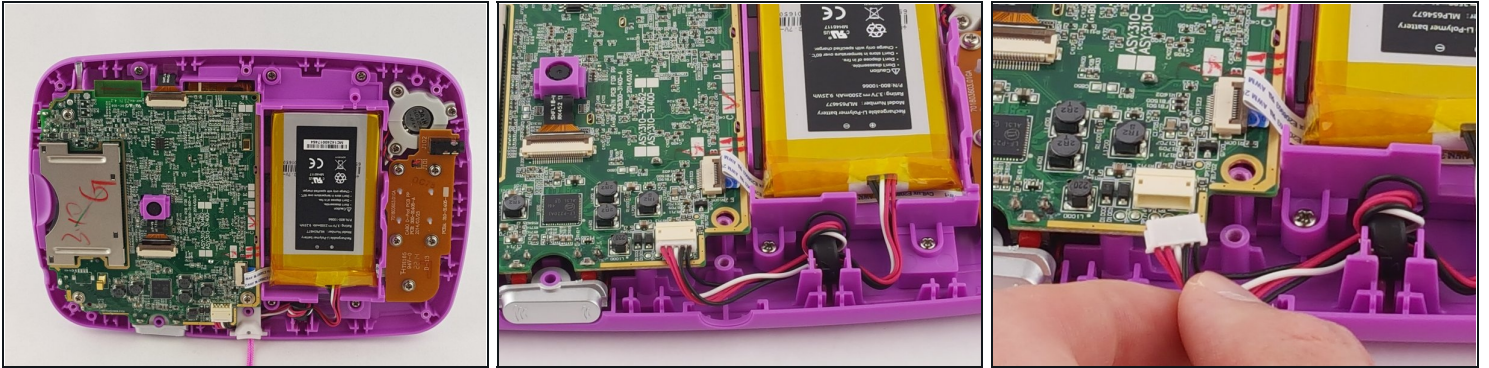
[Phillips #0 Screwdriver](#) (1)

Step 1 — Battery



- Before taking apart your device, ensure that it is turned off and that your [anti-static wrist strap](#) is secured to a ground.
- Remove the six 10.0 mm Phillips #0 screws from the outer case and remove the cover with your hands.
- ① You will not need to pry the case off.

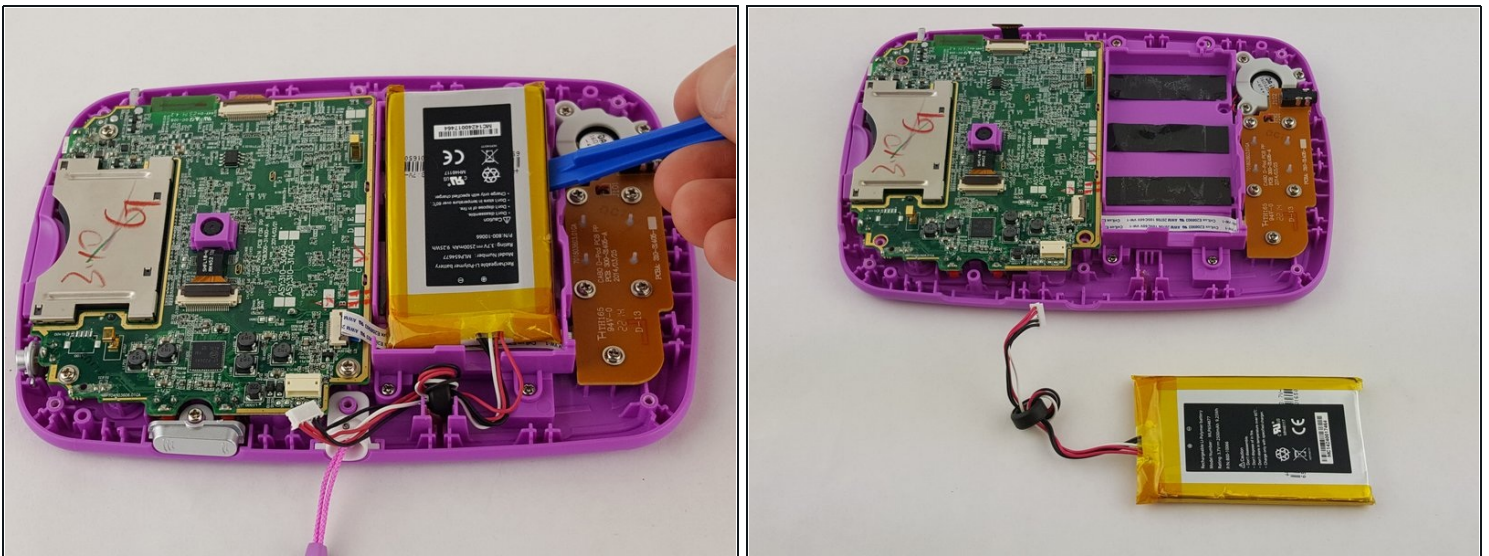
Step 2



- Unplug the battery from the motherboard with your hands.

ⓘ The battery sits to the right of the motherboard.

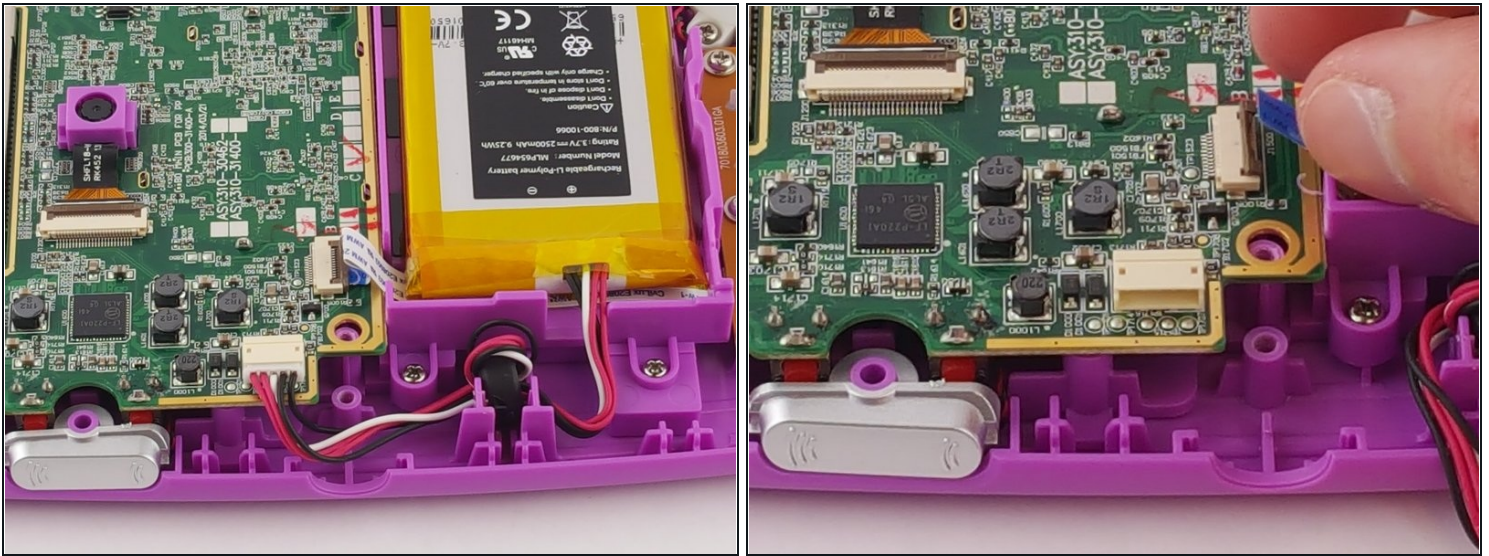
Step 3



- Pry the battery gently off of the plastic platform with an opening tool.

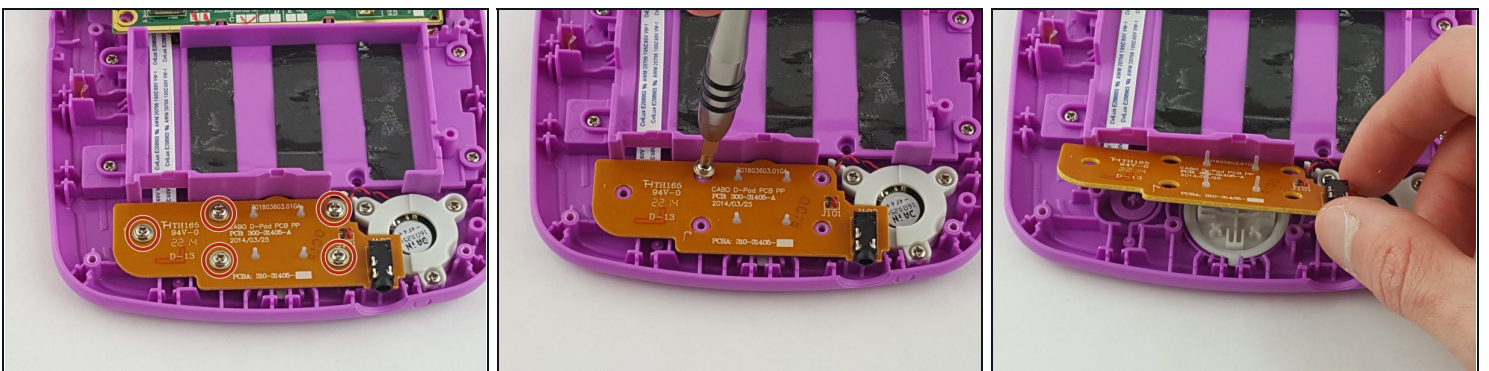
⚠ Do not to puncture the battery, as the material inside can be dangerous.

Step 4 — Speaker



- Disconnect the audio cord from the motherboard using a plastic opening tool.
- ⓘ When re-plugging this cord be sure it is flush with the slot, otherwise the speaker and directional pad will malfunction.
- ⚠ Use caution when unplugging, and re-plugging the ribbon cord as they are fragile.

Step 5



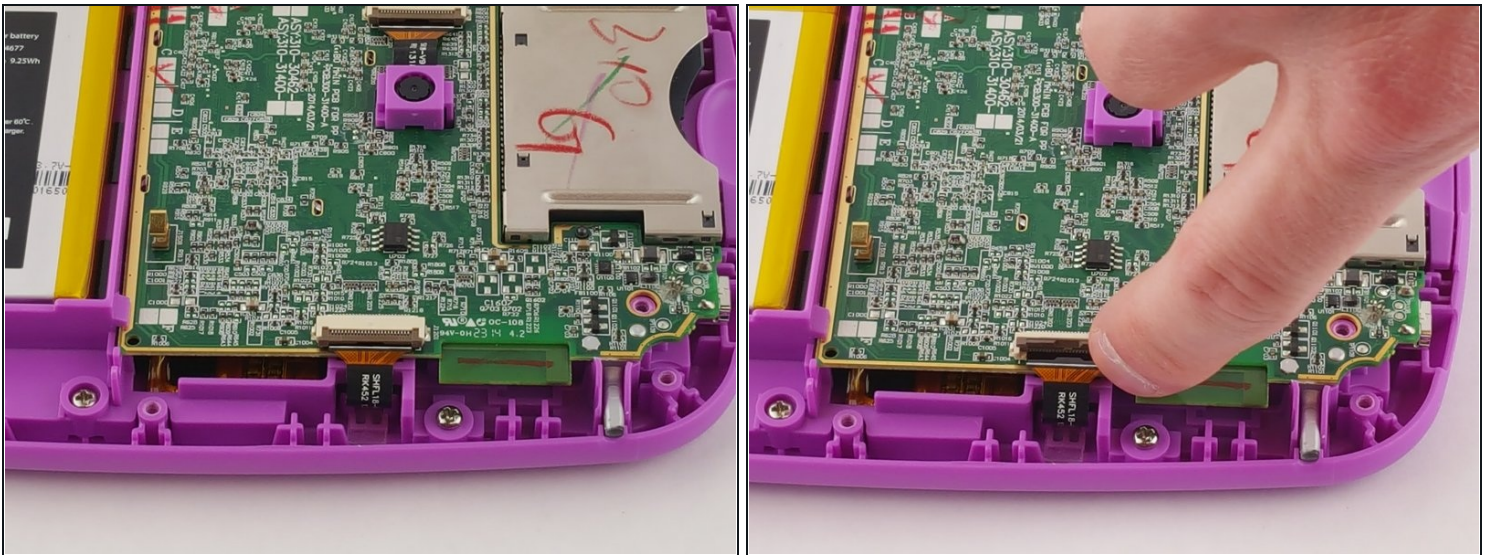
- Unscrew the five 6.0 mm phillips head screws from the board containing the audio jack and directional pad.

Step 6



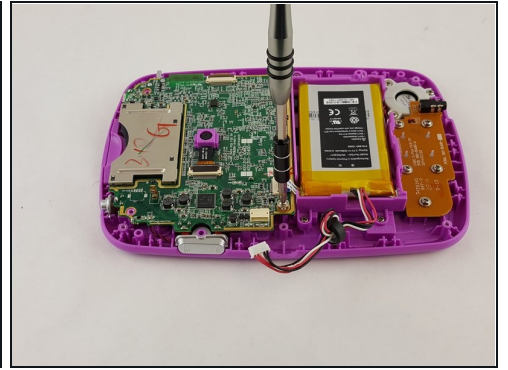
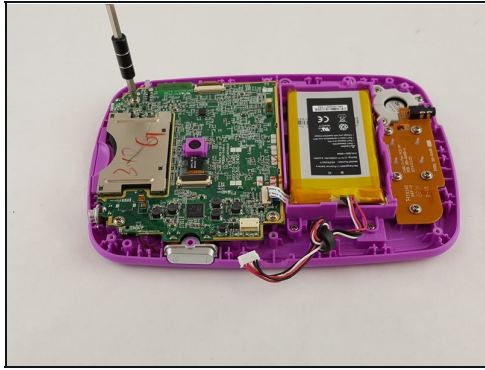
- Unscrew the three 6.5 mm phillips head screws holding down the speaker to the right of the audio jack.
- Remove the board and speaker from the device.

Step 7 — Motherboard



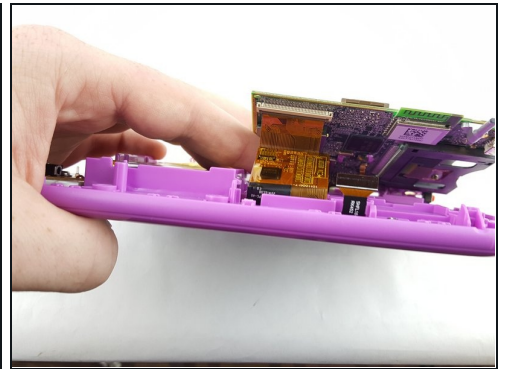
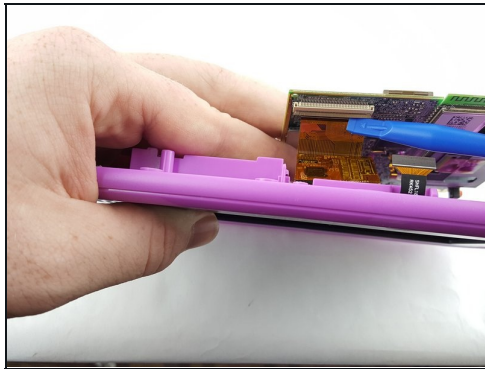
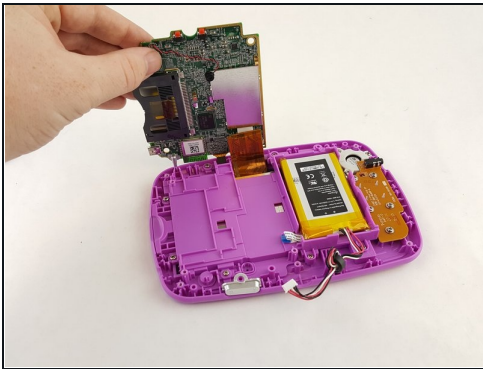
- Unplug the front facing camera cord with an opening tool to free the top of the motherboard.

Step 8



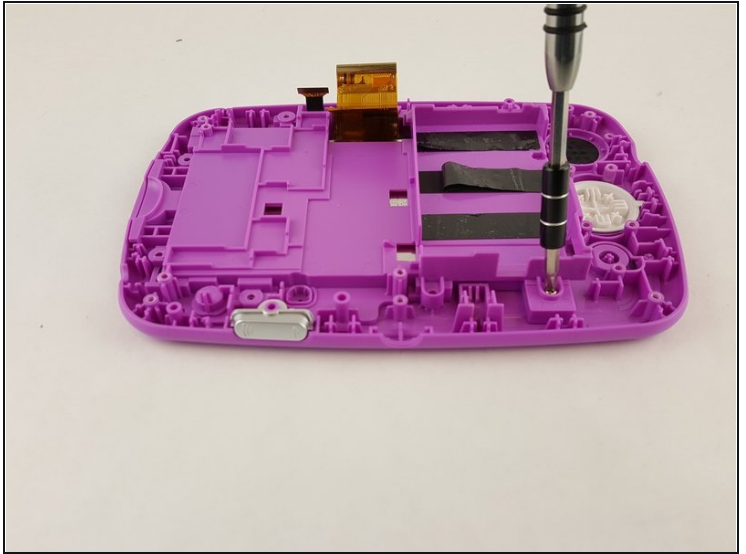
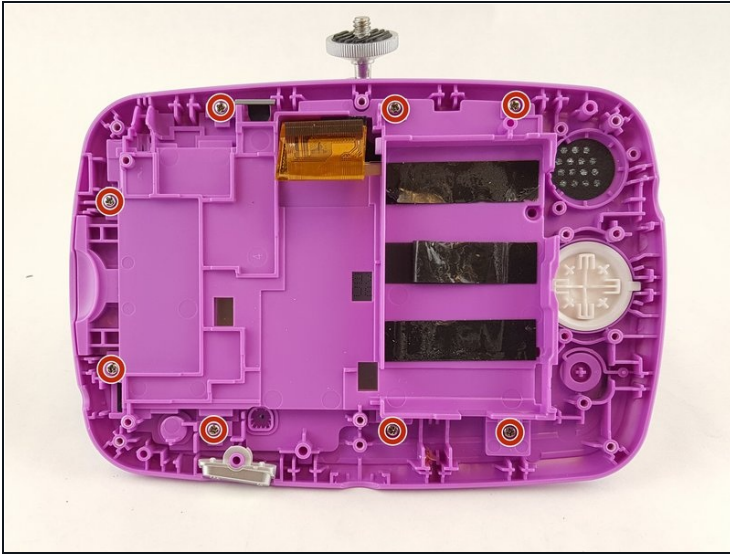
- Remove the three 6 mm phillips head screws holding the motherboard to the display assembly.

Step 9



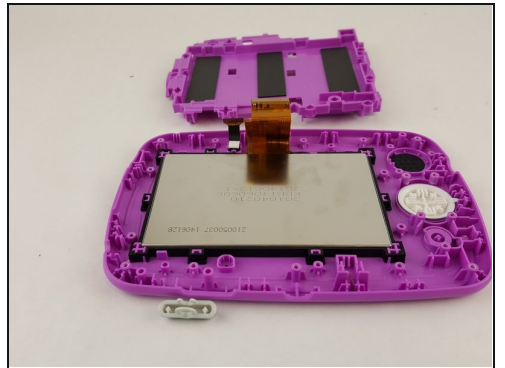
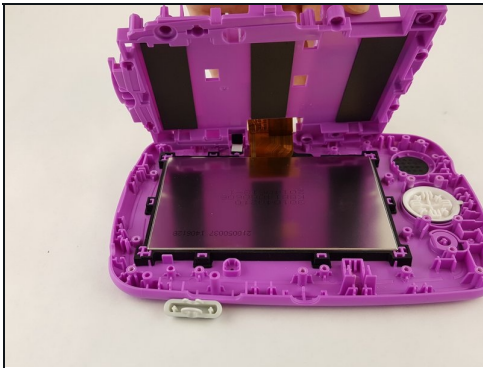
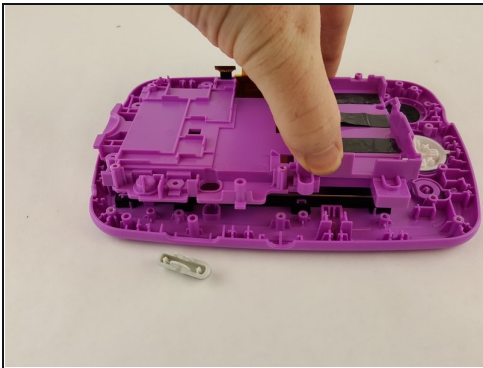
- Carefully lift the motherboard out of the case, exposing the last remaining cord on the underside of the motherboard.
 - Disconnect the gold display assembly cord with an opening tool to fully disconnect the motherboard.
- ① The device was rotated 180 degrees in order to unplug the display assembly cord.

Step 10 — Display Assembly



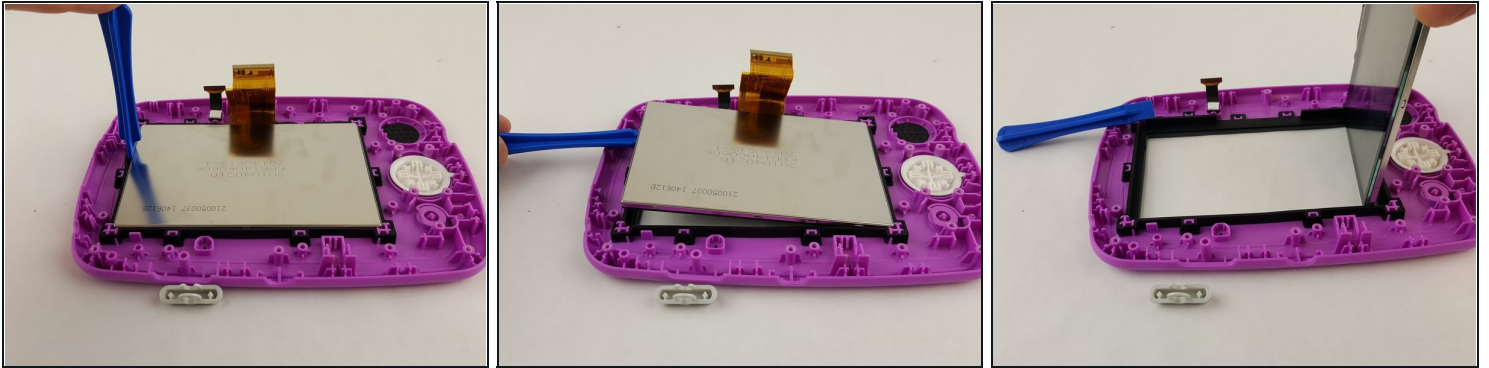
- Unscrew the eight 6.5mm Phillips #0 screws from the plastic casing.

Step 11



- Remove the covering with your hands to allow full view of the display assembly.

Step 12



- Remove the display assembly from the black rubber sleeve carefully.
 - ① There is a specific orientation for the rubber sleeve so take note of its position.
-

To reassemble your device, follow these instructions in reverse order.