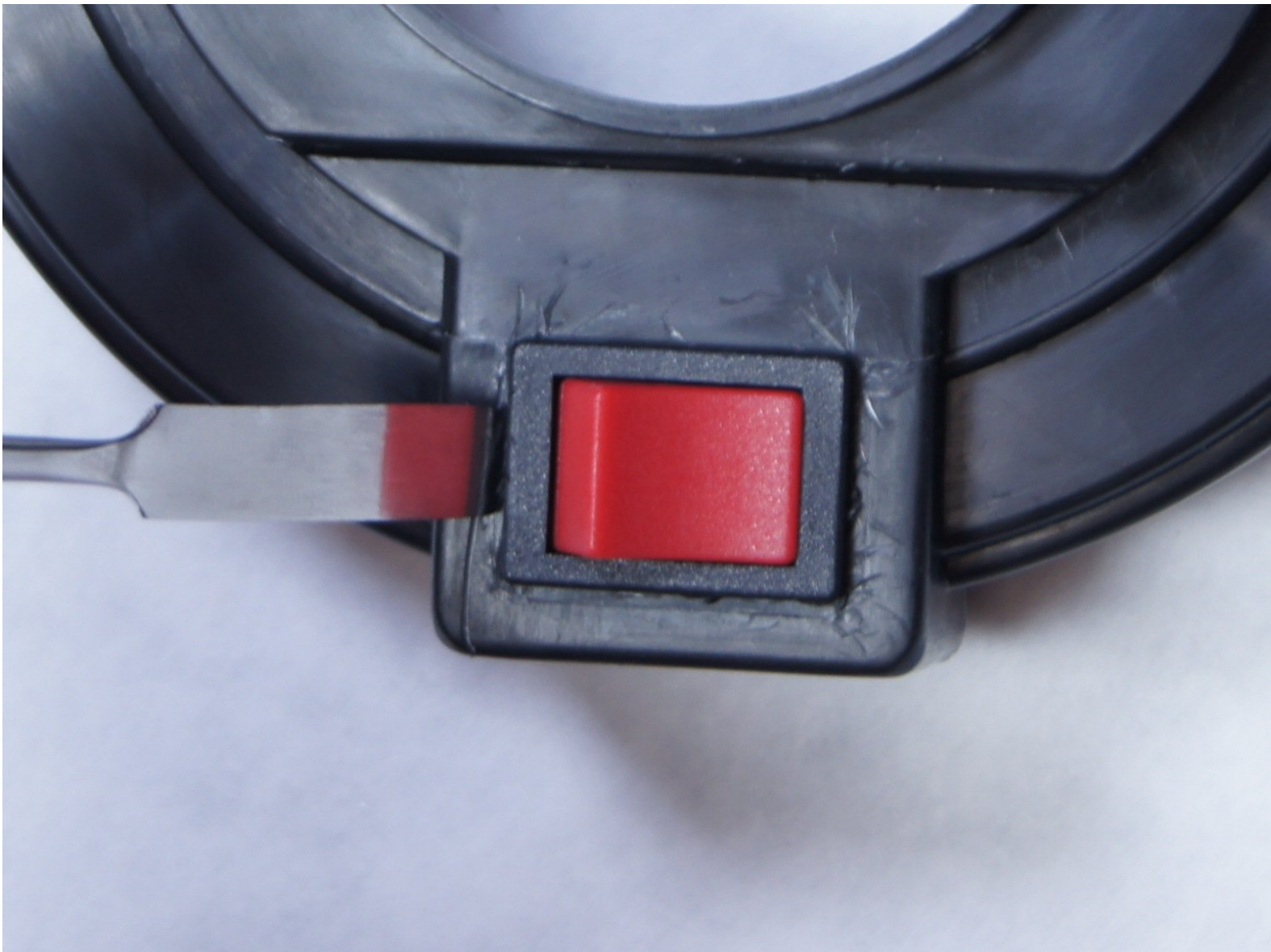




# Shop-Vac MC150A Power Switch Replacement

Follow this guide to remove and replace the power switch on the MC150A Shop-Vac.

Written By: Ngunlian



---

## INTRODUCTION

Follow this guide to remove and replace the power switch on the MC150A Shop-Vac.

---



### TOOLS:

- [3.5mm Hex Key](#) (1)
  - [Metal Spudger Set](#) (1)
-

## Step 1 — Unlatch the power unit assembly



- ⓘ Before you begin, make sure to switch off the device and unplug it from the outlet.
- Unlatch the two side clips securing the power unit assembly to the tank.
- Remove the power unit assembly from the tank assembly.

## Step 2 — Remove the top cover



- Use a 3.5 mm hex key to remove the three screws securing the top cover.
- Remove the top cover.



### Step 3



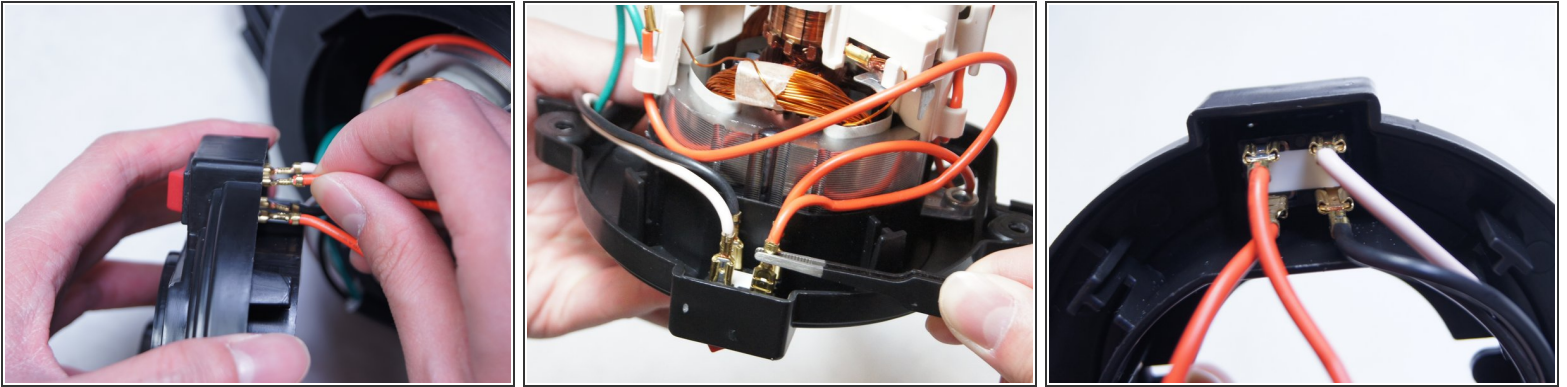
- Use a 3.5 mm hex key to remove the four screws securing the power unit assembly.

### Step 4



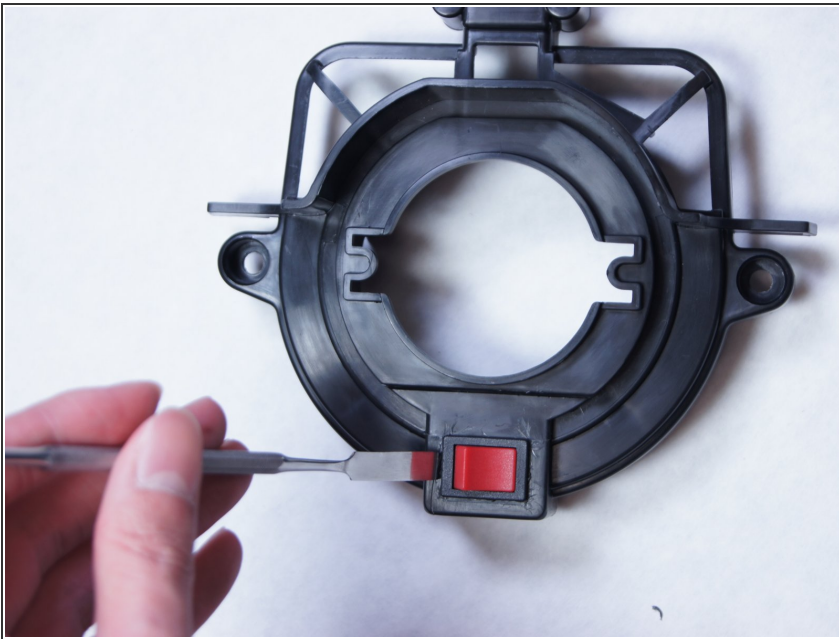
- Separate the power unit assembly from the cover.

## Step 5 — Disconnect the switch



- Pull out and disconnect the four spade connectors from the switch module.
- ☑ During reassembly, use the last image as a reference for how to connect the wires.

## Step 6



- Use a spudger to pry up and remove the red switch from the housing.

To reassemble your device, follow these instructions in reverse order.