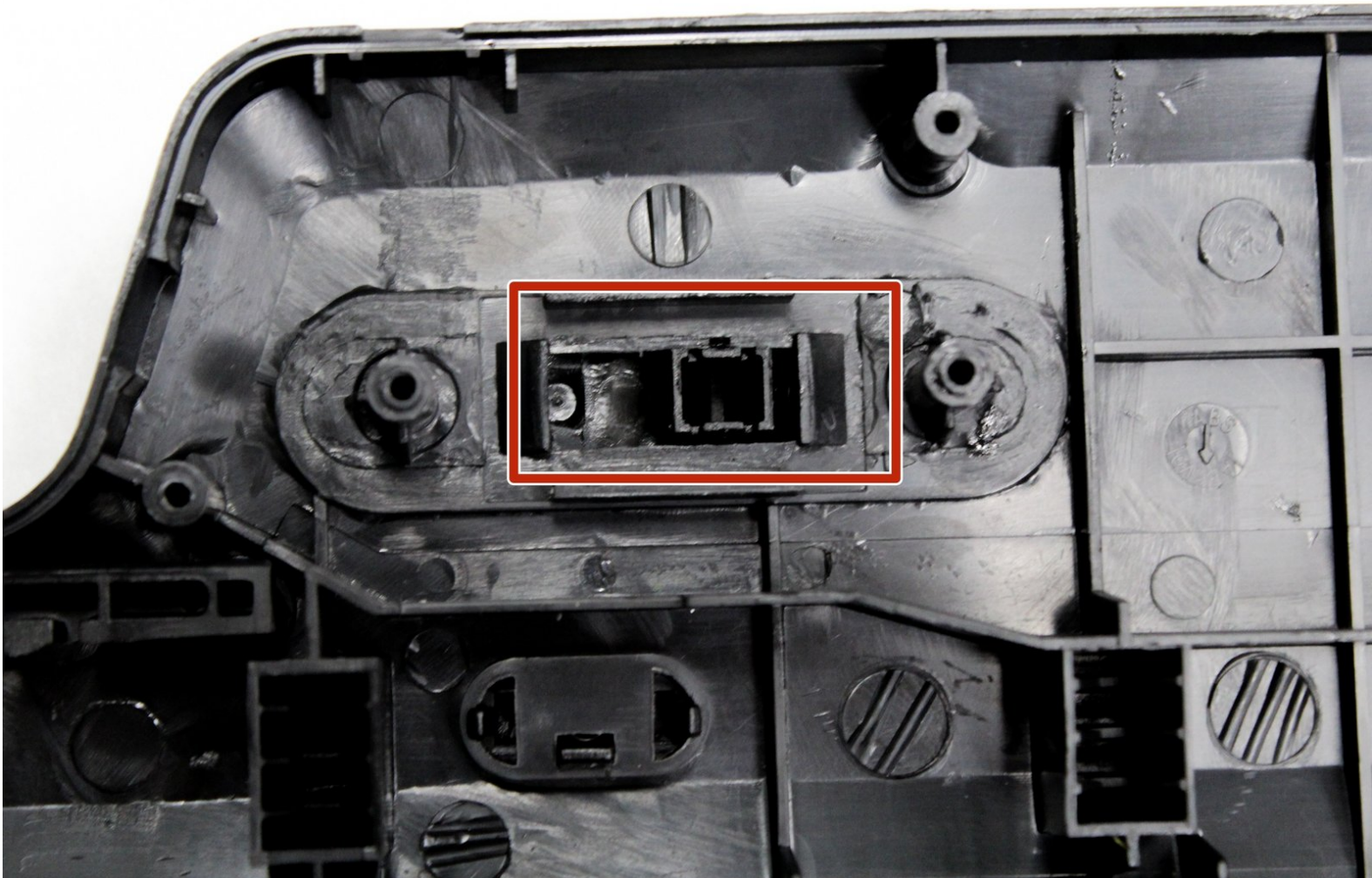




# AmazonBasics B0050BPWBQ On/Off Switch Replacement

If the On/Off switch no longer works, it may need to be replaced.

Written By: Natalie Meert



---

## INTRODUCTION

The On/Off switch located on the front panel may become damaged and no longer function correctly. With a dysfunctional switch, you may not be able to get the shredder to operate.

---





### TOOLS:

- [Phillips #1 Screwdriver](#) (1)
-

## Step 1 — Front and Back Panel Disassembly



-  The unit head needs to be switched to the off position and unplugged before any disassembly.
-  When removing screws in the following steps, make sure the unit is resting on a flat surface because pieces will easily come apart.
- Remove seven 11 mm Phillips #1 screws from the underside of the head unit.

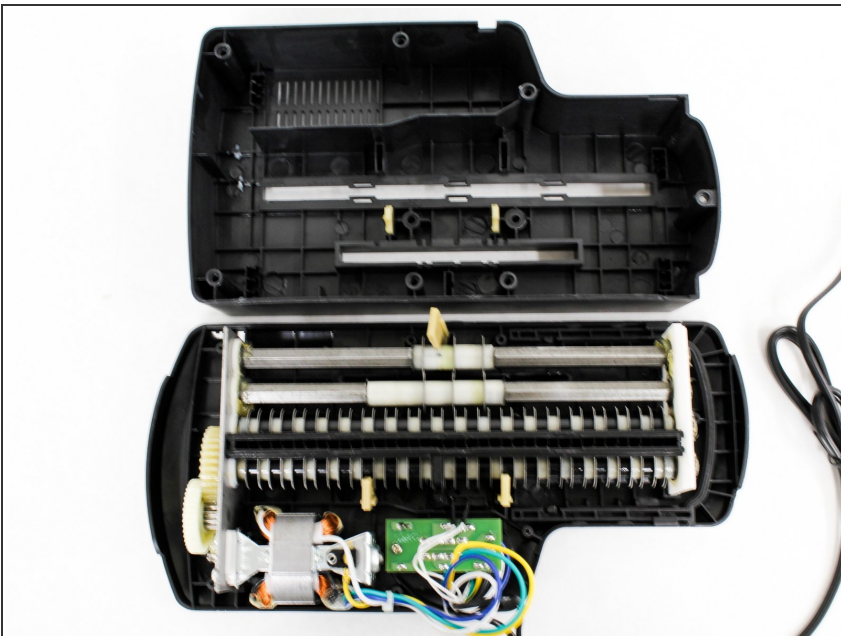
## Step 2



☑ Upon removal of the next screws, the front panel and the shredding component attached to it will fall apart from the back panel so have the unit resting on a flat surface.

- Remove two 50 mm Phillips #1 screws from the middle of the underside of the head unit.

## Step 3

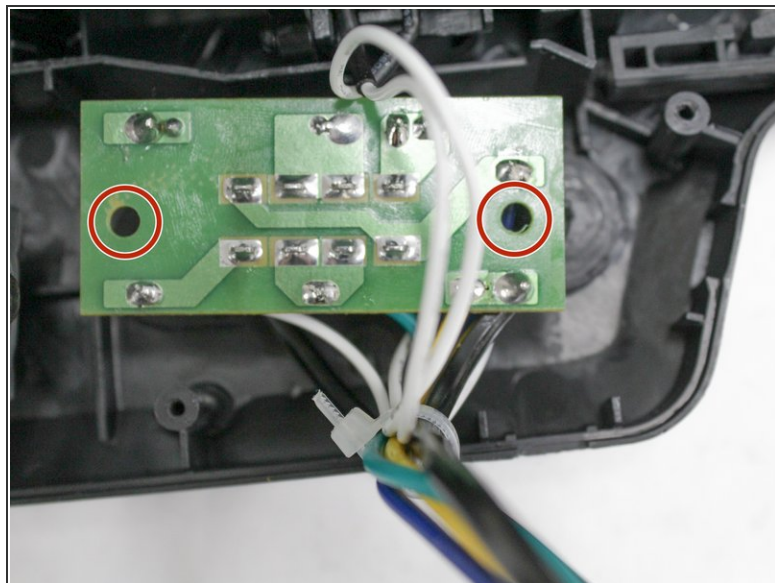
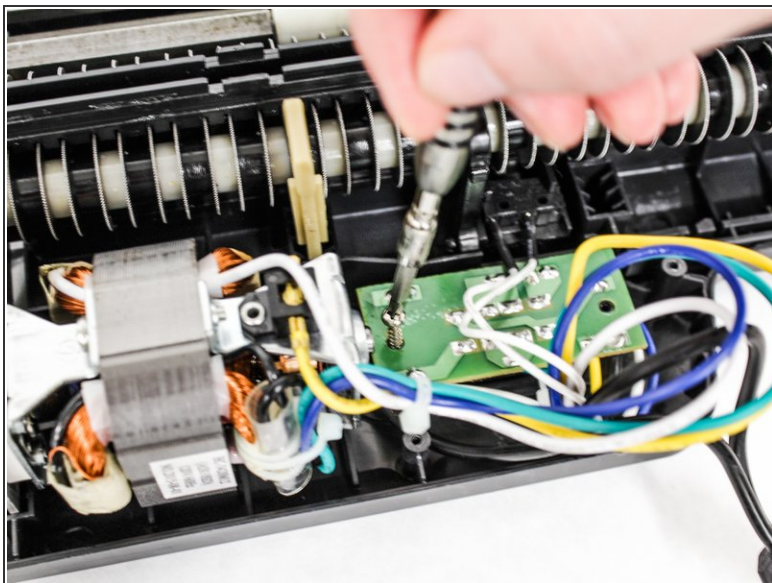


- Lay the back panel away from the front panel on a flat surface.

ⓘ The back panel will be light because it is only the plastic, while the front panel will be heavy with the shredding component attached to it.

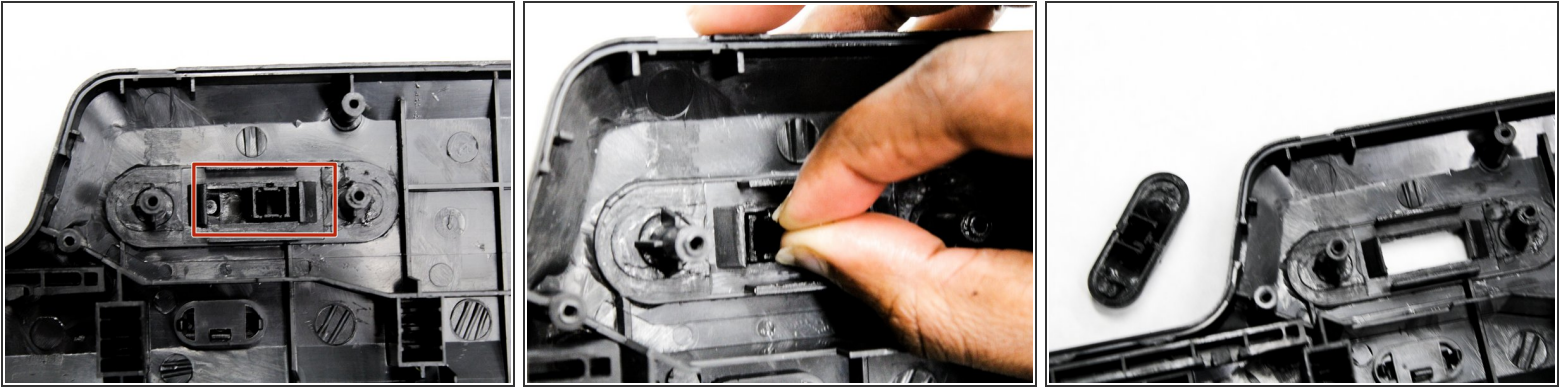


## Step 4



- Find the green control board that is located next to the shredding motor.
- Remove two 11 mm Phillips #1 screws located on opposite sides of the control board.
- ⓘ You may need to move wires over to find the screws.

## Step 5 — On/Off Switch



- Pull the front panel away from the shredding unit.
- Locate the black On/Off switch attached to the front panel where the control board was once attached.
- Squeeze the wings of the On/Off switch from the inside of the front panel to detach it from its slot in the panel.

To reassemble your device, follow these instructions in reverse order.