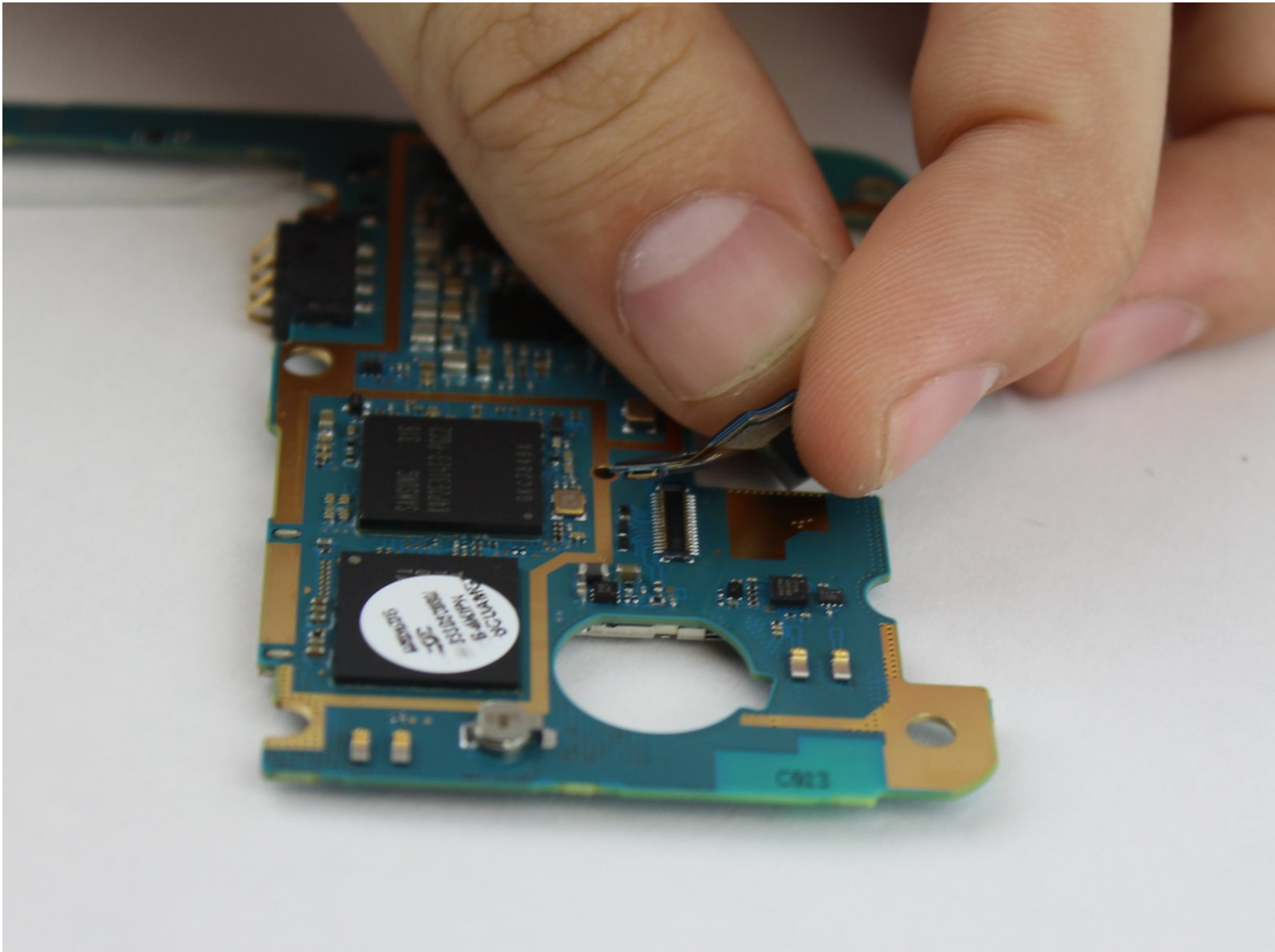




Samsung Galaxy Mega Rear Facing Camera Replacement

Replacement guide for the rear facing camera assembly.

Written By: Max Rathman



INTRODUCTION

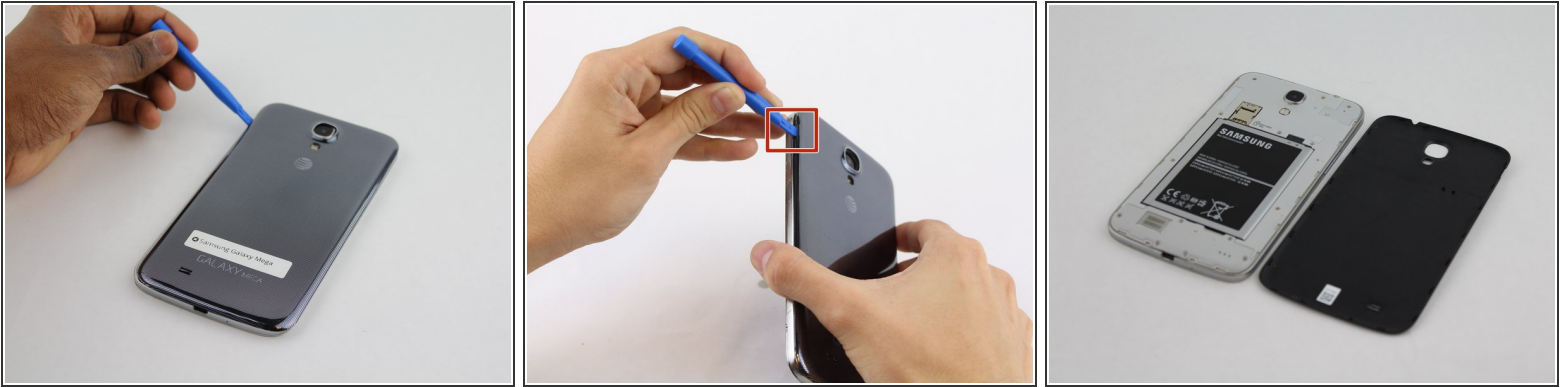
This guide instructs on how to replace the rear facing camera.



TOOLS:

- [Metal Spudger](#) (1)
 - [Phillips #000 Screwdriver](#) (1)
 - [iFixit Opening Tools](#) (1)
-

Step 1 — Battery



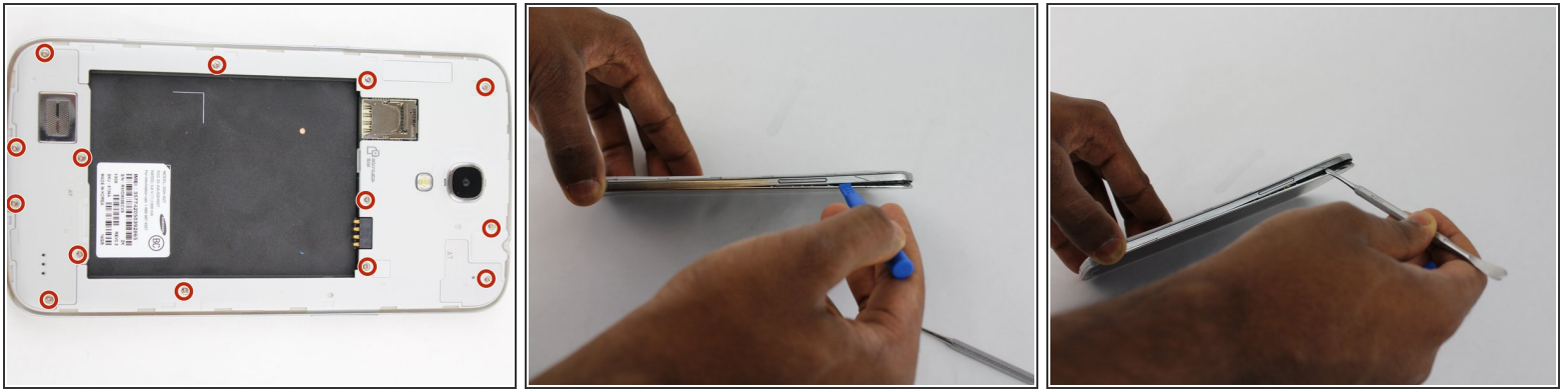
- Before starting, ensure device is completely turned off.
- On the back of phone, locate the slot on the top left corner.
- Insert plastic opening tool or fingernail and pull up on the back plate.
- With the corner released, slide your finger around the device between the back plate and the phone to release connectors.

Step 2



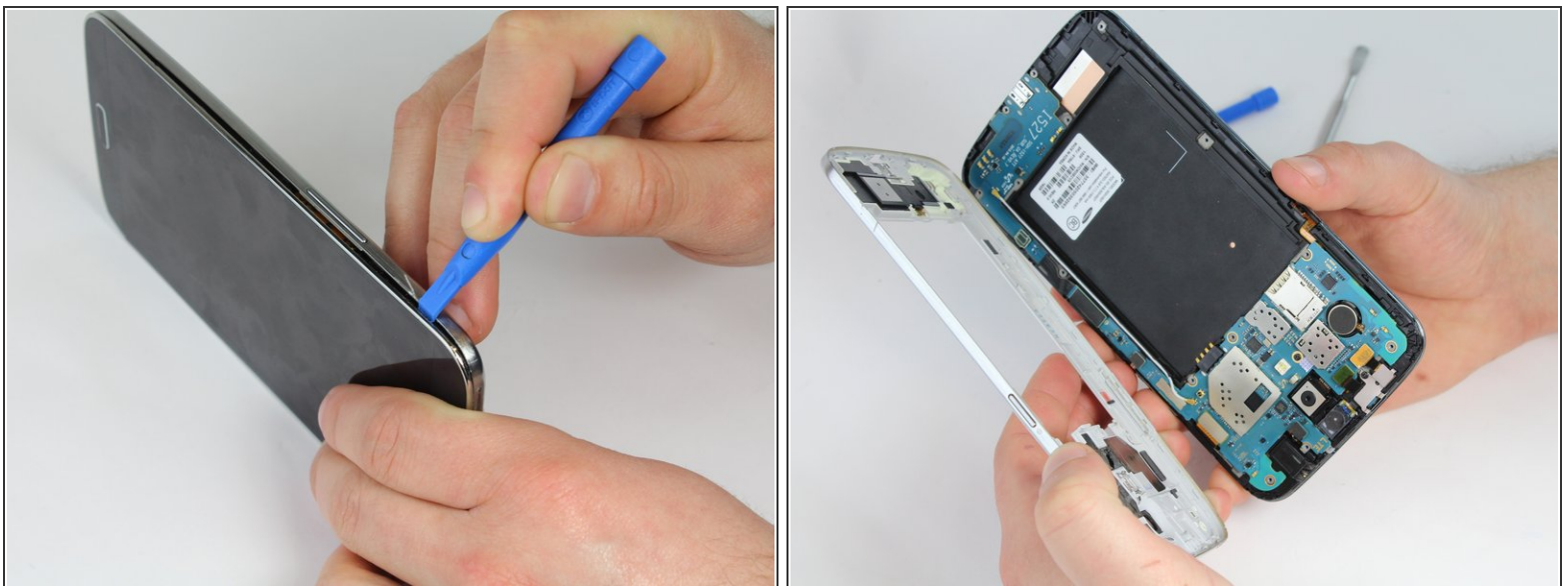
- Insert fingernail into the slot on bottom of battery and gently pull up.
- Remove the battery.

Step 3 — Midframe



- Remove the 14 3.45 mm Phillips #000 screws from the assembly.
- Gently, insert plastic opening tool into seam above the volume buttons of your phone.
 - ⓘ You may substitute metal spudger for plastic opening tool to first start the opening of the seam. This may cause exterior cosmetic damage.

Step 4



- Slowly slide plastic opening tool around the device to release all the connectors internal to the device.
- The device should easily come apart after the plastic opening tool is slid around the entire device.

During reassembly, ensure volume and power buttons align properly.

This document was generated on 2020-11-28 04:59:39 AM (MST).

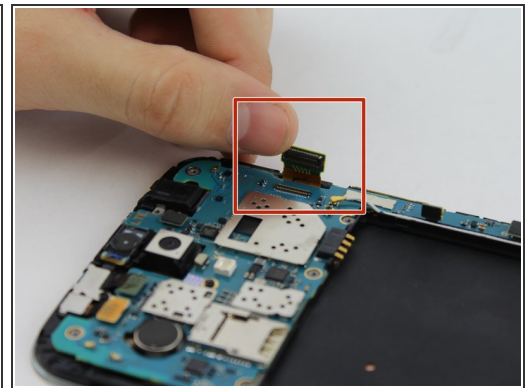
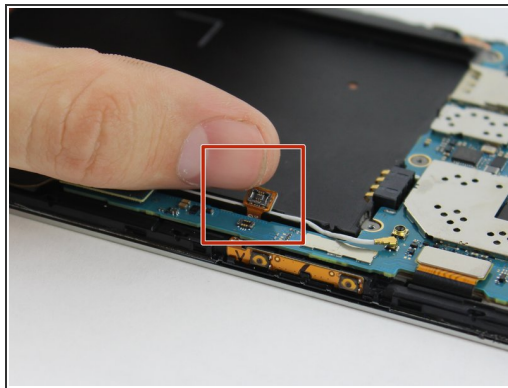


Step 5 — Motherboard



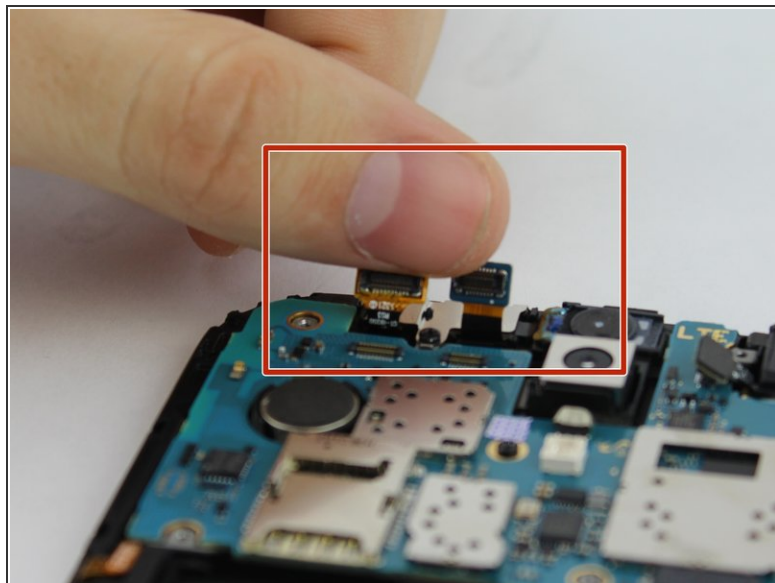
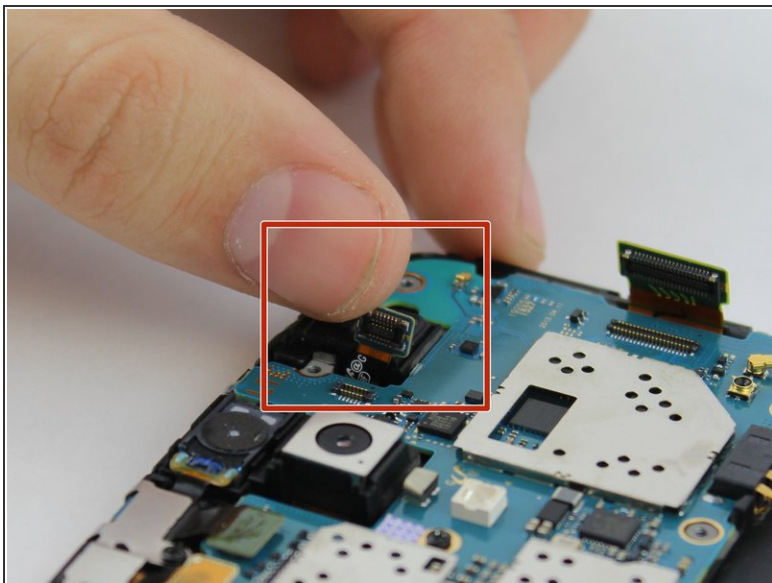
- Remove the 2.55 mm Phillips #000 screw from the motherboard panel.

Step 6



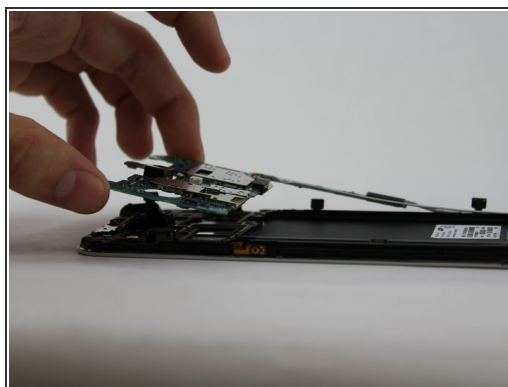
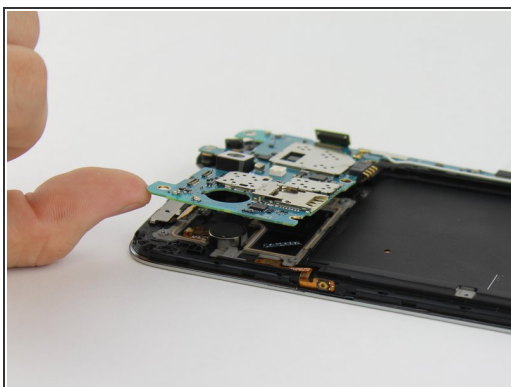
- Remove the connector clips on motherboard.

Step 7



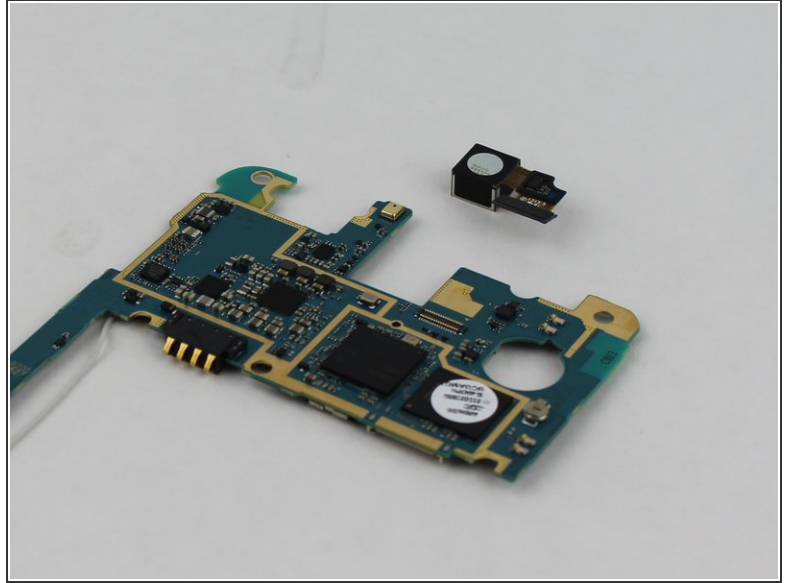
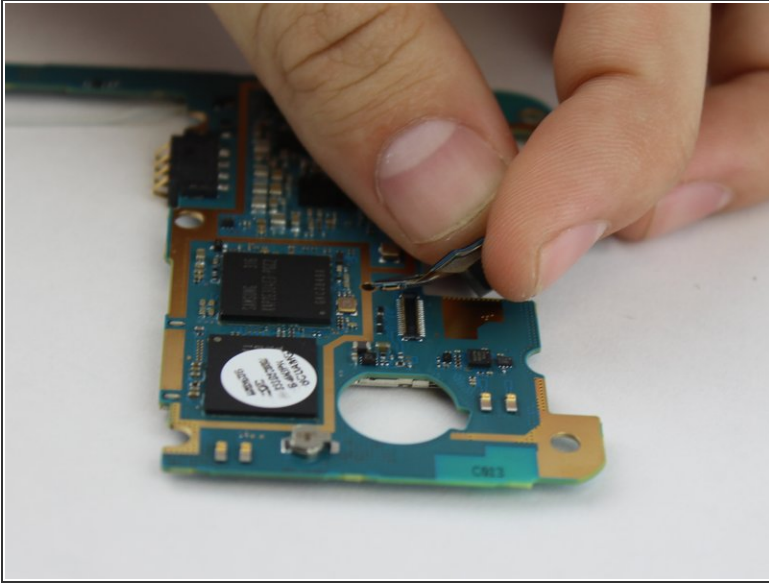
- Remove the final motherboard connectors.

Step 8



- Lift motherboard gently with finger.
- i** There is a total of six connectors on the motherboard that need to be removed. All of them are shown in the pictures in this guide, make sure all of them are disconnected before removing.

Step 9 — Rear Facing Camera



- On the back of the motherboard, remove the connector of the rear facing camera from the motherboard.
- Camera is now detached from device.

To reassemble your device, follow these instructions in reverse order.