



OnHub Speaker Replacement

You will be able to replace the speaker if you follow our instructions.

Written By: Mahir Abdella



INTRODUCTION


In this guide we will explain the steps necessary to safely remove and replace the OnHub speaker.

TOOLS:

- [Tweezers](#) (1)
 - [Phillips #1 Screwdriver](#) (1)
 - [Desoldering Braid](#) (1)
 - [Metal Spudger Set](#) (1)
 - [iFixit Opening Tools](#) (1)
 - [Solder](#) (1)
 - [Soldering Iron](#) (1)
 - [Staples](#) (1)
-

Step 1 — Speaker Grille



 Make sure the device is unplugged before proceeding with the disassembly.

- While holding the base firmly using the palm of one hand, remove the cowl (cover) by turning the cowl counterclockwise until a snap is heard. Once disengaged, pull upwards.

Step 2



- Place the plastic opening tool under the speaker grille, and just above the light ring.
- Move the plastic opening tool around the groove while applying upward force to pry loose the 4 clips holding the grille in place.

Step 3



- Using a metal spudger, carefully remove the congestion-sensor antenna by undoing the two clips.

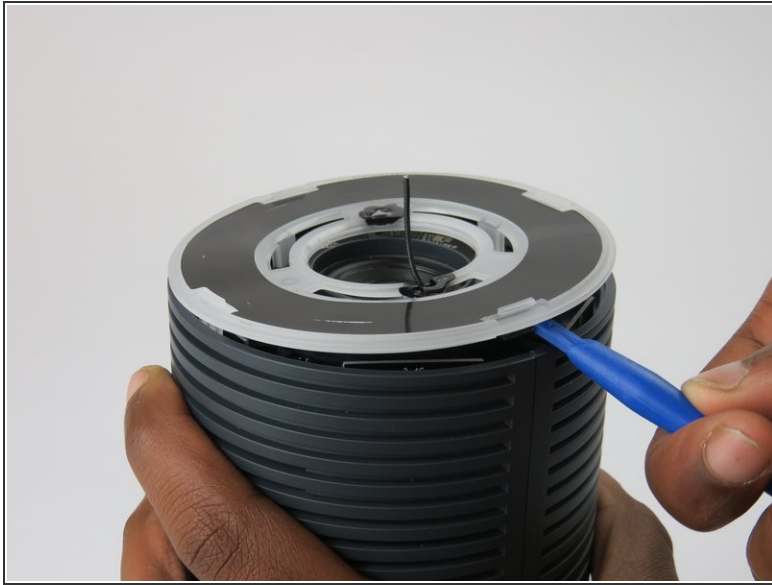
⚠ There is a delicate wire connection to the antenna that is easily broken if not careful.

Step 4 — Congestion-sensing Antenna



- Remove the wire connection to the antenna by soldering it off.
- For help with soldering and de-soldering check out the [iFixit Soldering Guide](#)

Step 5 — Outer Casing



- You must remove the plastic cover found just above the speaker.
- Wedge the plastic opening tool under the cover and apply pressure in an upward direction.
- There are four clips that you are removing. When disengaged, these clips will make a snapping noise.

 Though the snapping noise is normal, take care not to break these clips.

Step 6



- Upon removing the cover, four screws and the speaker housing will be exposed.
- Unscrew the four 12mm screws using a #1 Phillips head screwdriver.
- This unlocks the speaker housing and antenna array from the casing.

Step 7



- On the bottom of the OnHub is two screws holding the casing to the base.
- To access these screws, you must remove the rubber pad that is glued to the base.
- To remove the pad, slide a metal spudger under the edge of the pad. Pry the pad away from the base, removing the glue.
- Once the pad is pulled up enough to grab, peel it the rest of the way exposing the screws.

⚠ The rubber pad is thin and fragile; be careful not to tear when removing.

Step 8




- Remove the two 12mm screws under the base of the OnHub by using a #1 Phillips head screwdriver.

Step 9

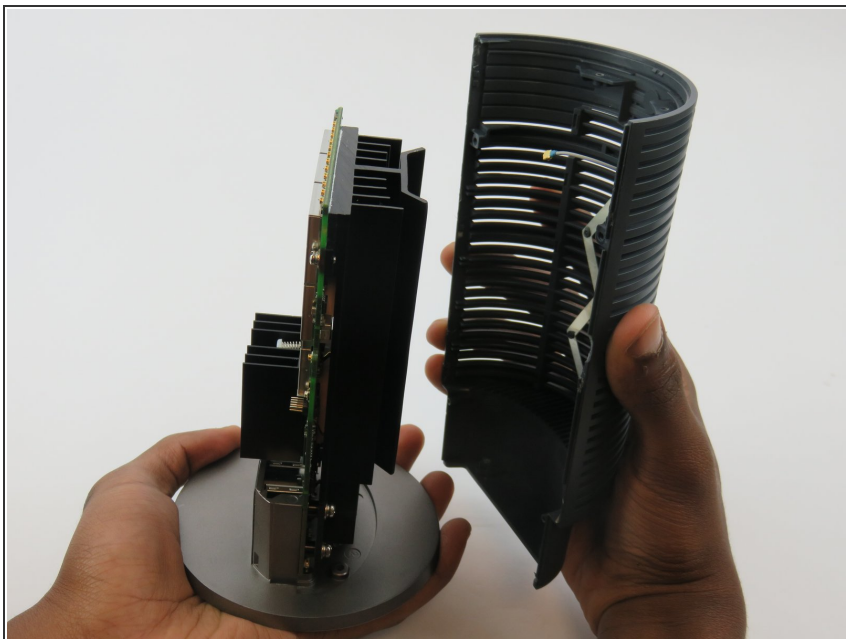


- Once the two screws are removed from the base, it is time to split the casing apart.

 It is okay if a couple clips break. It will still hold together with a few remaining.

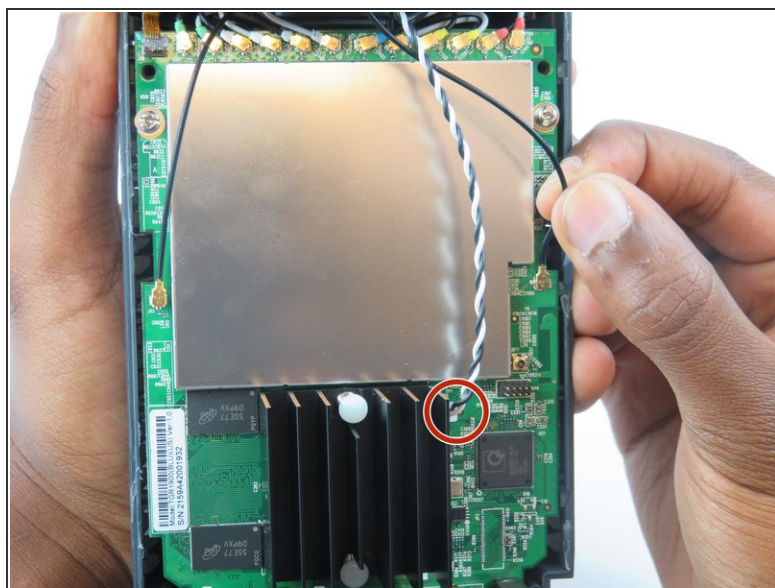
- Wedge a spudger between the two casing halves, and pry the clips apart starting from the top
- There are three hooking style clips in total.

Step 10



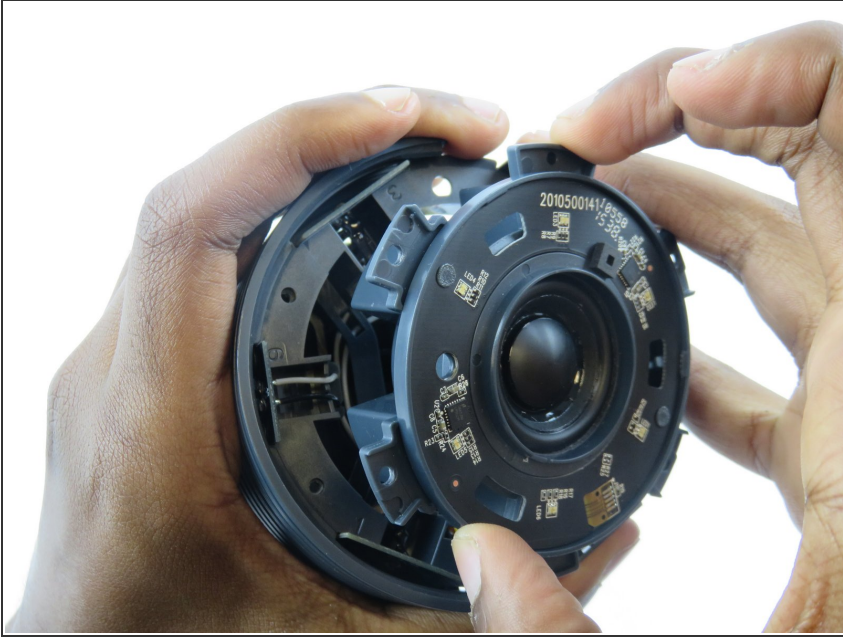
- Once unclipped, you can slide the two casing halves apart, and remove the casing.

Step 11 — Speaker



- Underneath the speaker is an intertwined black and white wire.
- Disconnect the wire from its connection to the motherboard.

Step 12



- The speaker should now easily come off with a firm grip on the OnHub device and pull.

To reassemble your device, follow these instructions in reverse order.