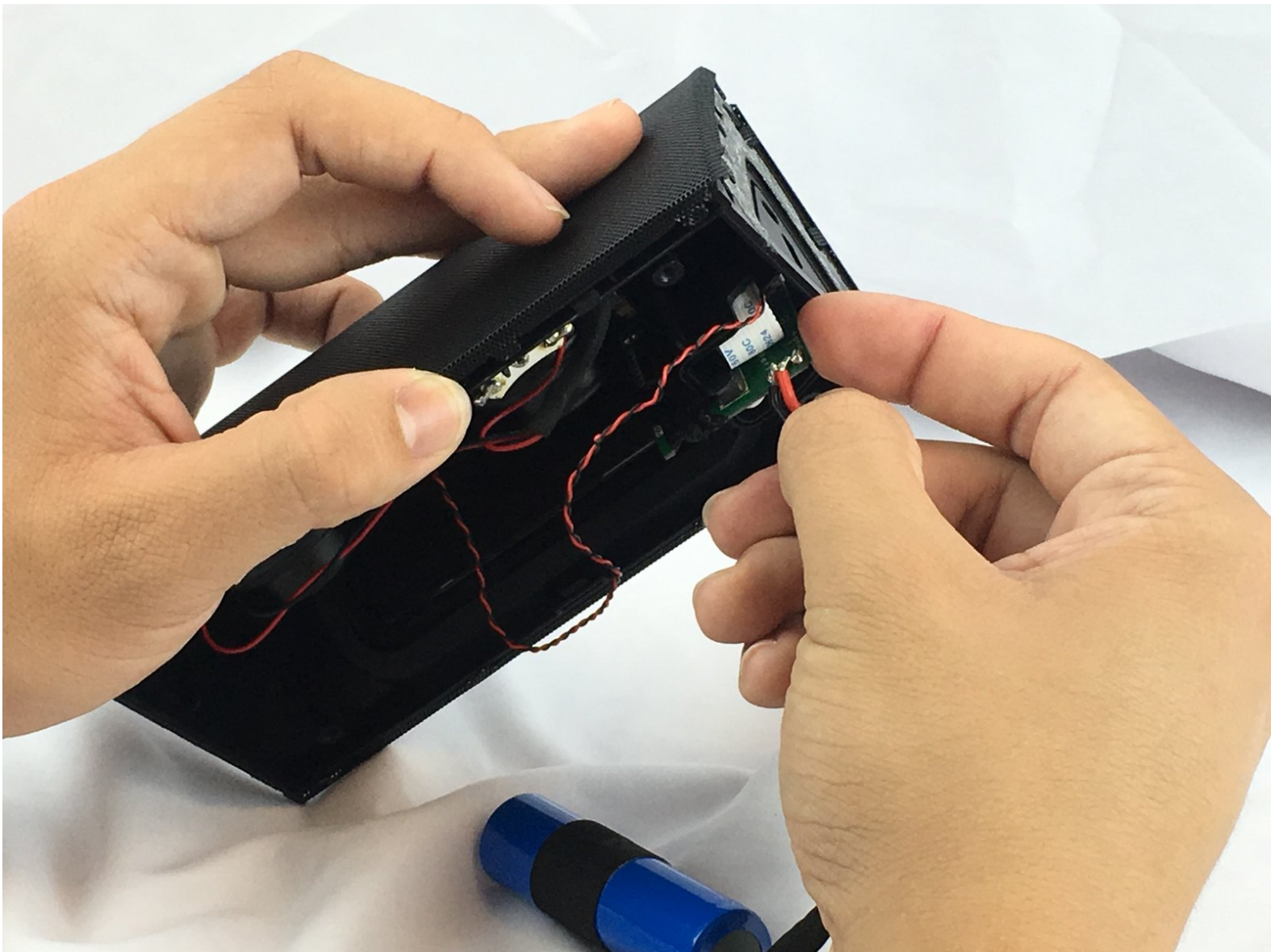




Cambridge SoundWorks OontZ Angle Plus Speakers Replacement

This guide is here to help with removing and replacing the speakers in a Cambridge SoundWorks OontZ Angle Plus.

Written By: David Rice



This document was generated on 2020-11-15 03:15:03 PM (MST).



TOOLS:

- [Phillips #1 Screwdriver](#) (1)
 - [iFixit Opening Tools](#) (1)
 - [Metal Spudger](#) (1)
 - [Soldering Iron](#) (1)
-

Step 1 — Rubber Casing



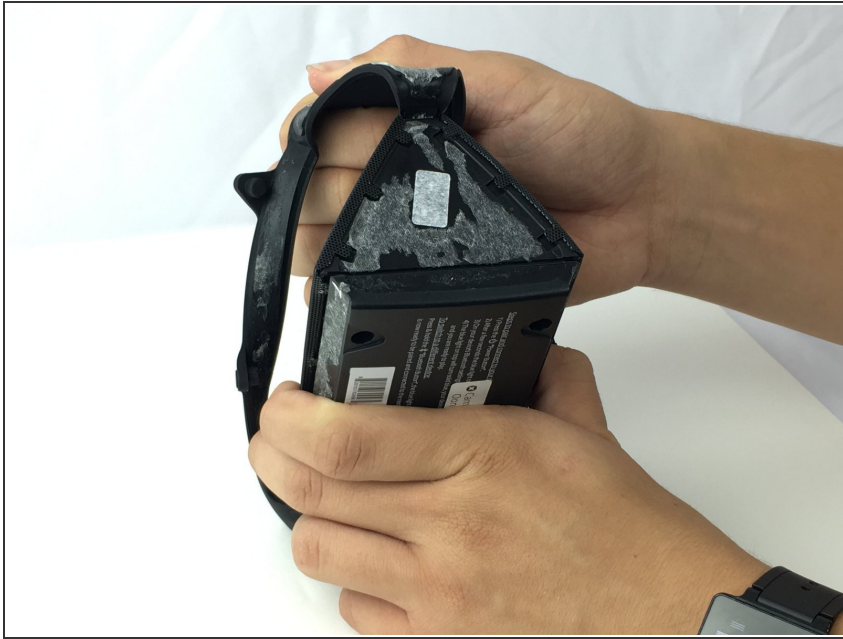
- Remove the six screw covers from the bottom of the device.

Step 2



- Starting from the screw covers, remove the front and back casing of the device.

Step 3



- Carefully pull off the casing covering the ends.

Step 4



- Slowly remove the casing from the top of the device.

Step 5 — Speaker Grill



- Unscrew the five 11.5mm Phillips screws from the bottom plate.

Step 6



- Carefully pull apart the bottom and top plates, using the blue plastic opening tool.

Step 7



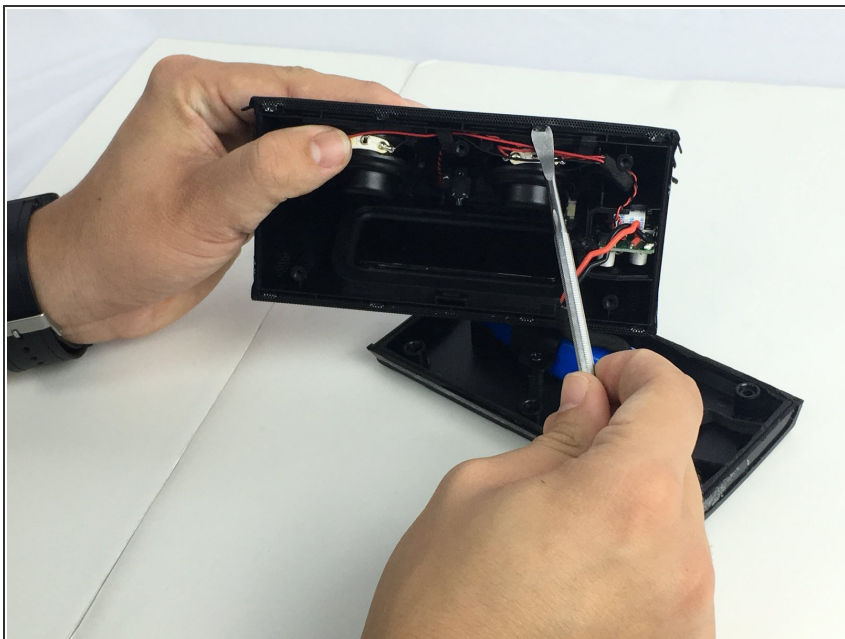
- Once the plates are separated, slowly pull the bottom plate away from the top plate.
- ⓘ There are wires connected to both plates, so be cautious while doing this step.

Step 8



- Use the metal spudger to bend the three bendable clamps on the ends of the speaker cover.
- ⓘ Beware, the bending process requires patience and extra time.

Step 9



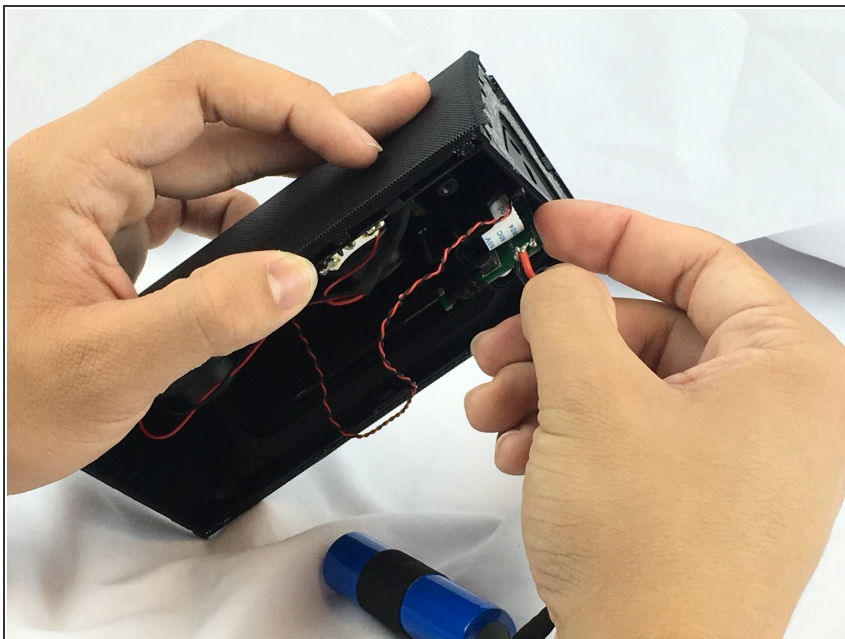
- Next, use the metal spudger to bend the four bendable clamps on the bottom of the speaker cover.
- ⓘ This step also requires some time and patience.

Step 10



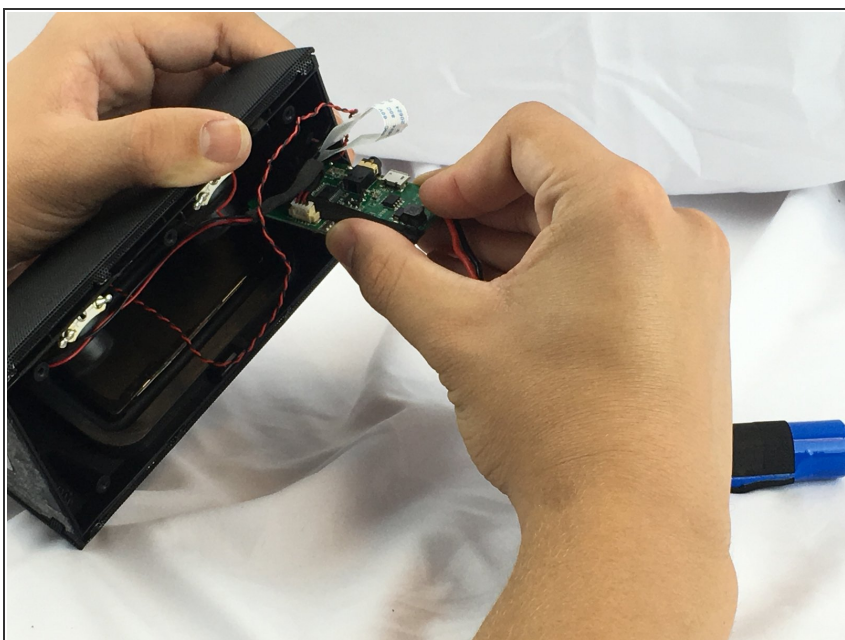
- Finally, bend the speaker cover upward and it will slide out.

Step 11 — Speakers



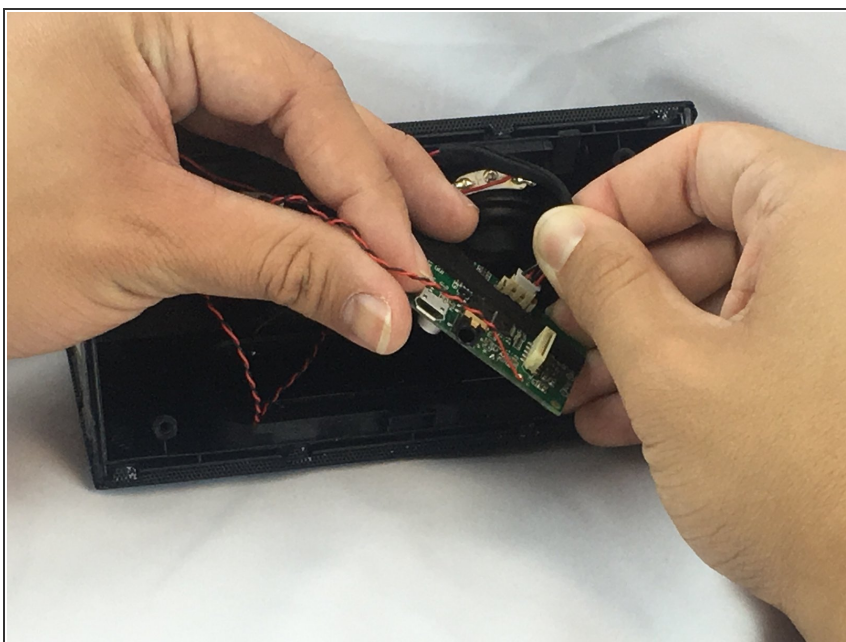
- With some force, push the motherboard straight in toward the center of the device.

Step 12



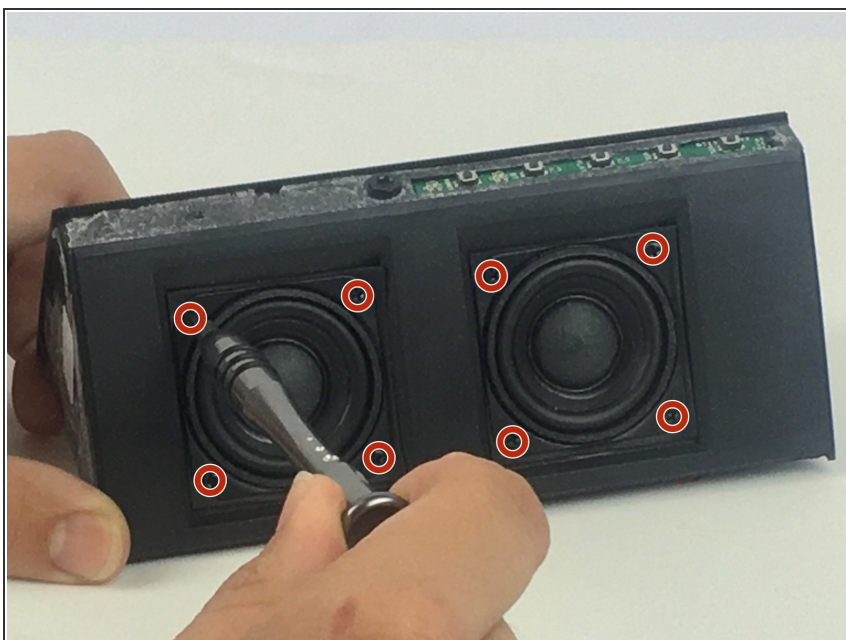
- Pull the motherboard straight out of the device.
- ⓘ There is some adhesive on the motherboard that holds it in place. This makes the motherboard fit in the groove rather tight.

Step 13



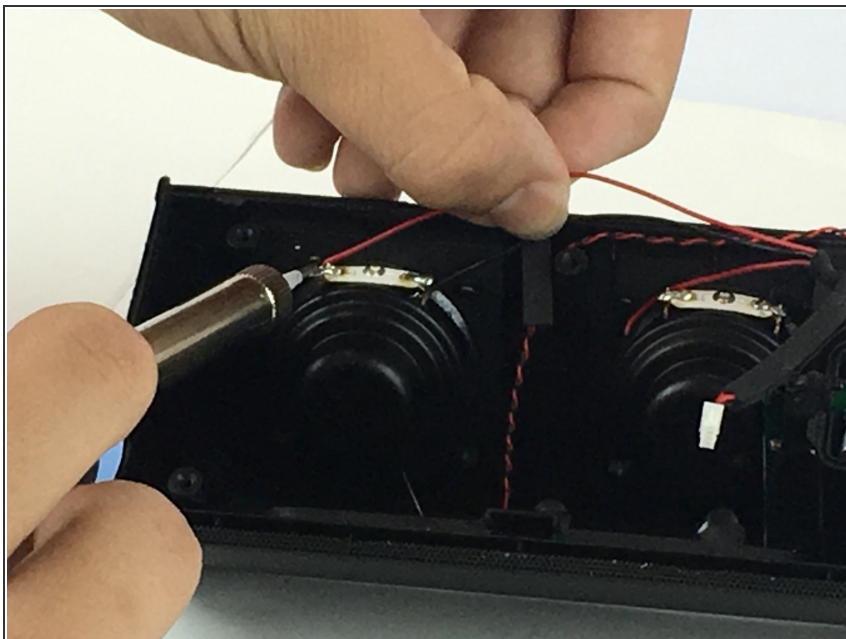
- Unplug the speaker's connector from the motherboard.

Step 14



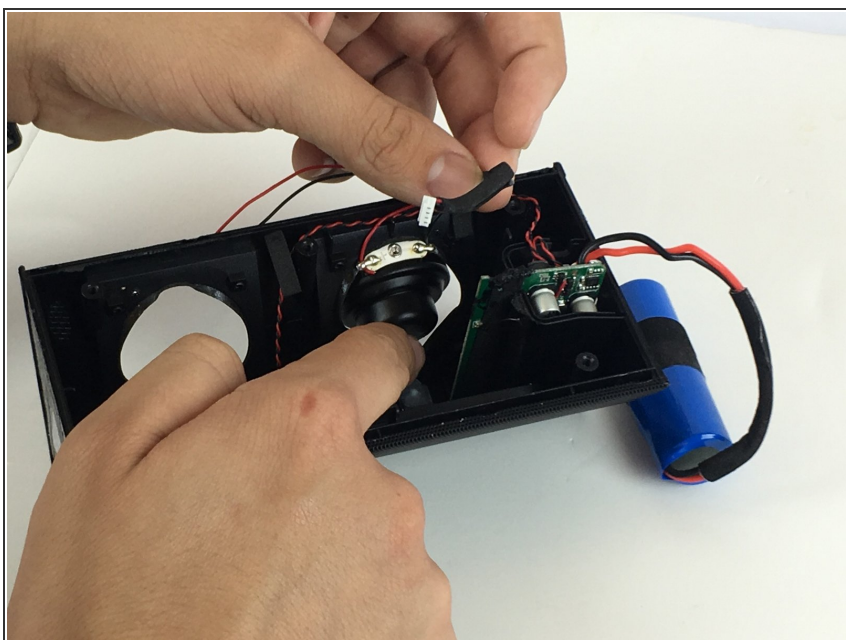
- Unscrew the eight screws holding the speakers in place.

Step 15



- Desolder the the wires connected to the back side of both speakers.

Step 16



- Carefully push the speakers out one at a time.

To reassemble your device, follow these instructions in reverse order.