



# BLU Energy X Front Facing Camera Replacement

Use this guide to replace the front facing camera in the phone.

Written By: Sishun Wang



---

## INTRODUCTION

The front facing camera is located on the front side of the top motherboard. In order to access it, the motherboard just has to be exposed and then gently lifted. Use caution while disconnecting the front camera from the motherboard because it is easily damaged.



### TOOLS:

- [Spudger](#) (1)
  - [Phillips #000 Screwdriver](#) (1)
  - [iFixit Opening Tools](#) (1)
-

## Step 1 — Front Facing Camera



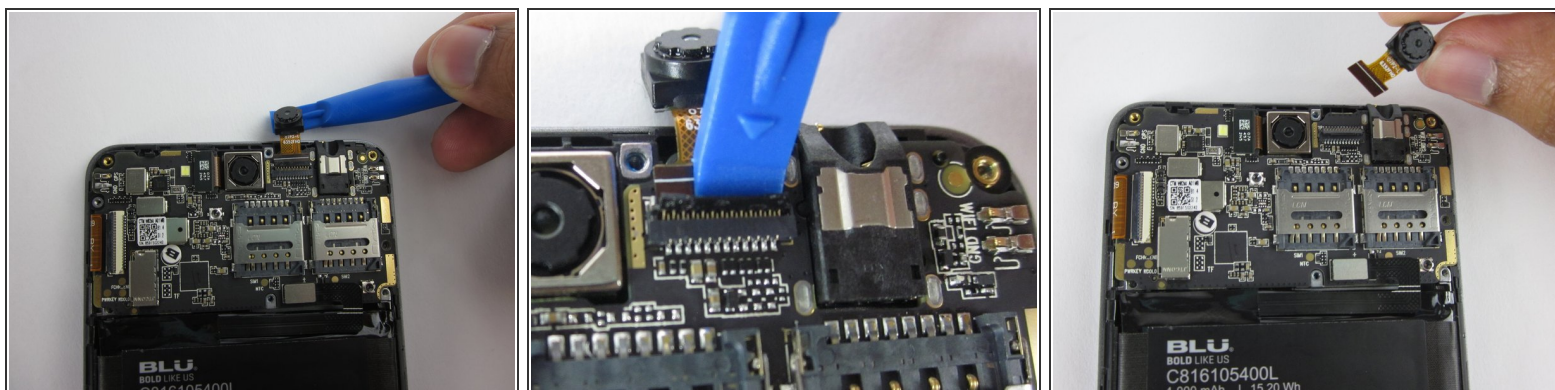
- Pry open and remove back cover with plastic opening tools.

## Step 2



- Remove the seven 4mm JIS J000 screws from top plate
- Remove top plate

## Step 3



- Flip up the black retaining flap on the front-facing camera ZIF connector.
- Gently lift up the motherboard, and pull the front-facing camera free of the device.

To reassemble your device, follow these instructions in reverse order.