



# Maisto Rock Crawler Remote Circuit Board Replacement

Use this guide to replace the remote circuit board in your Maisto Rock Crawler

Written By: kevin



# INTRODUCTION

This guide will walk you through the process of the remote circuit board in a Maisto Rock Crawler.



## TOOLS:

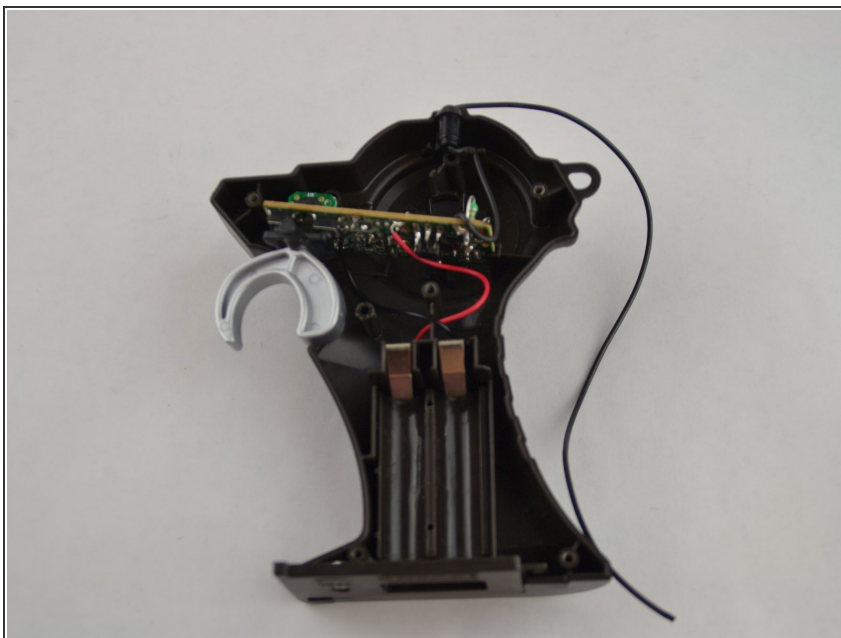
- [Soldering Workstation](#) (1)
  - [JIS Driver Set](#) (1)
-

## Step 1 — Remote Circuit Board



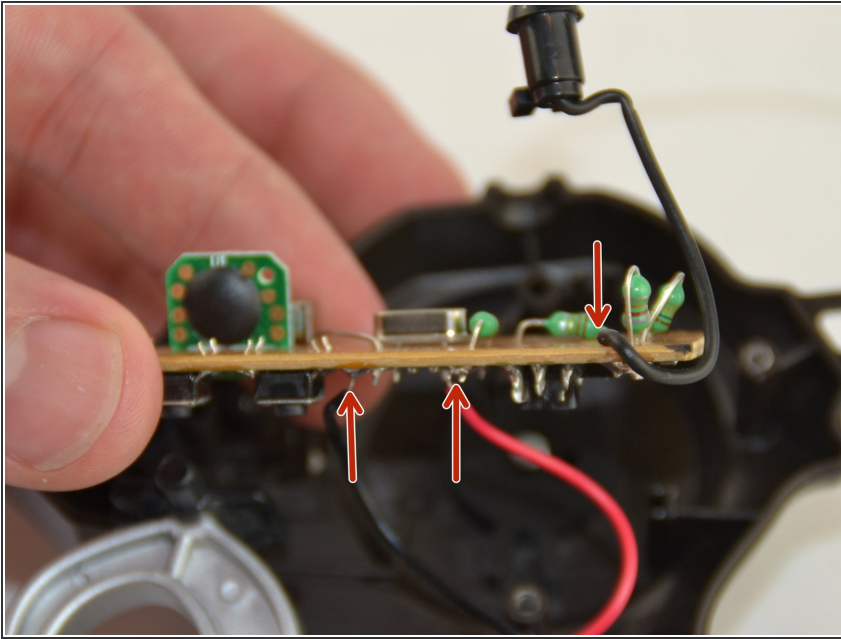
- ⚠ Remove the batteries before doing anything.
- Use the driver and bit J1 to remove the five 9.5mm Philips screws holding the remote together.

## Step 2



- Take off the half of the remote that had the screw heads facing up.

### Step 3



- Slide out the circuit board.

⚠ Use the soldering iron to desolder the 3 wires.

To reassemble your device, follow these instructions in reverse order.