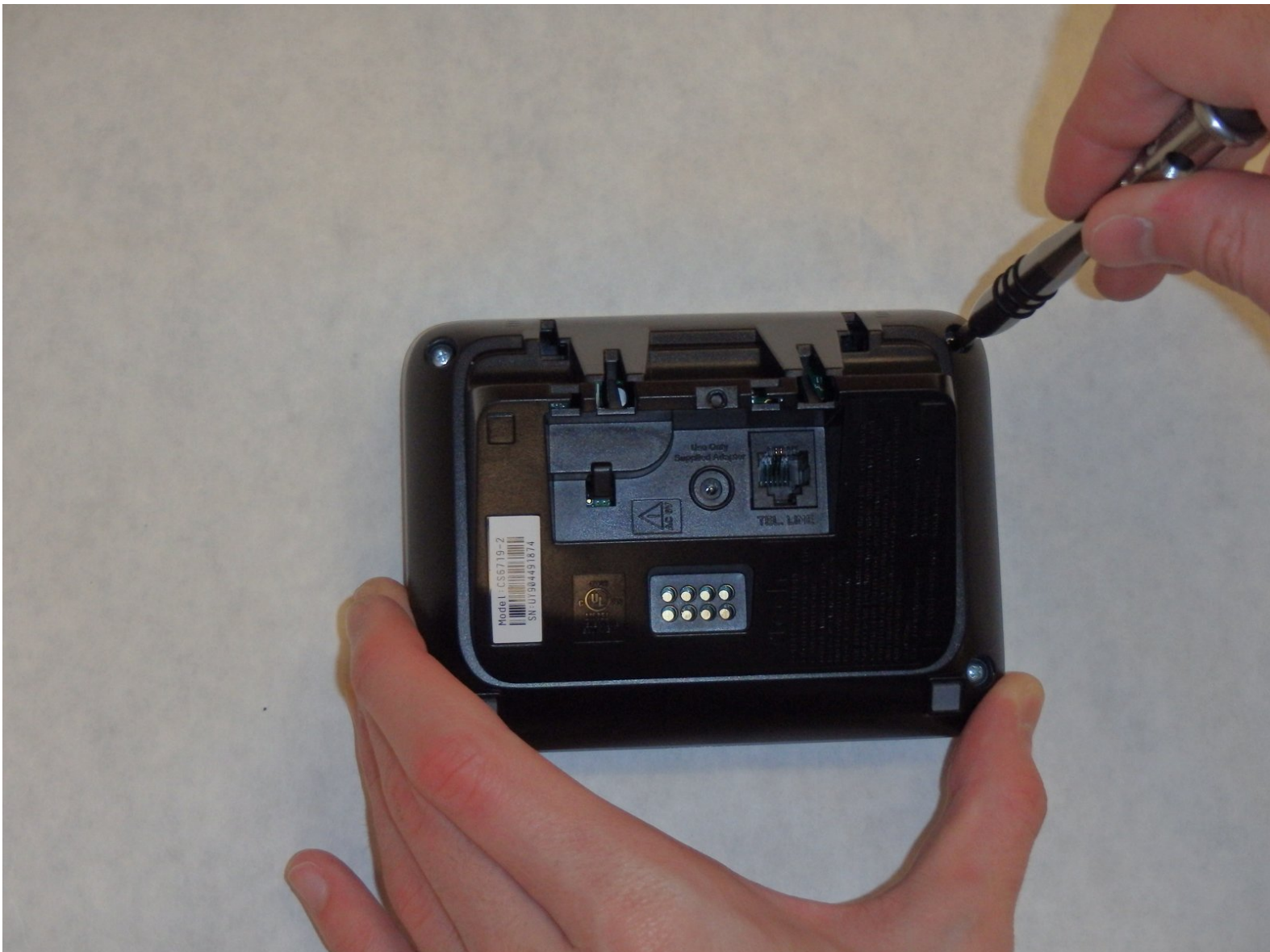




Base Replacement

This is a guide to replace the main base of the VTech CS67192 phone.

Written By: Josh Showalter



INTRODUCTION

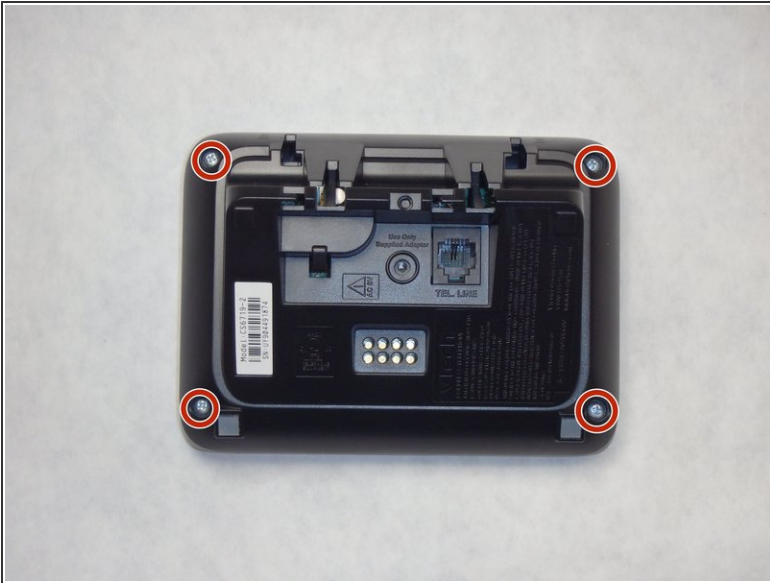
This guide shows the steps to replace the parts in the base.



TOOLS:

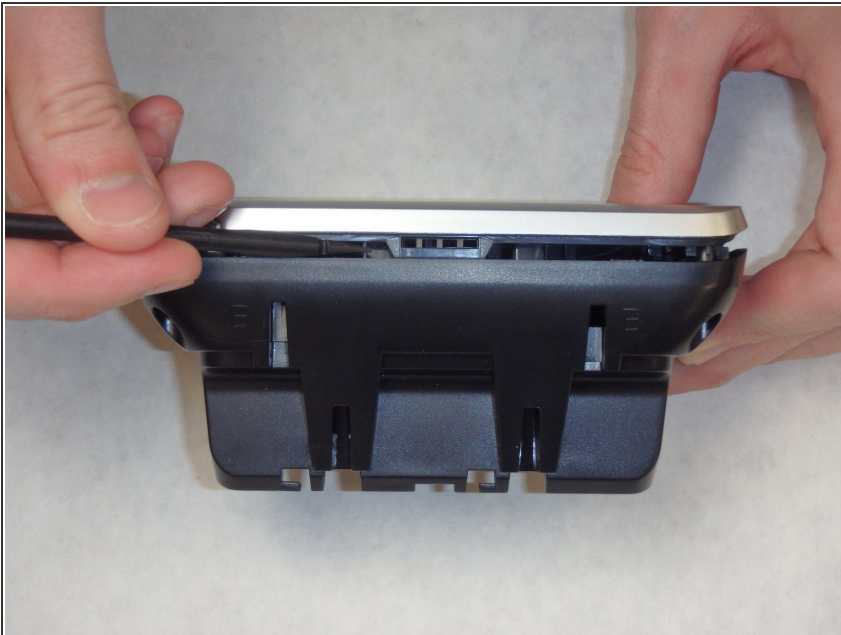
- [Phillips #0 Screwdriver](#) (1)
 - [Heavy-Duty Spudger](#) (1)
-

Step 1 — Base



- Remove the four Phillips #0 screws (9.4mm) located at the bottom of the phone on the back side of the base.

Step 2



- Use the spudger to separate the bottom from the top.
- ⓘ There are two clips, located top and bottom, that you have to compress with the spudger.

To reassemble your device, follow these instructions in reverse order.

This document was generated on 2020-11-21 03:35:26 PM (MST).

