



ASUS ZenWatch Motherboard Replacement

Remove and replace the motherboard on the ASUS ZenWatch

Written By: Wayne McClure



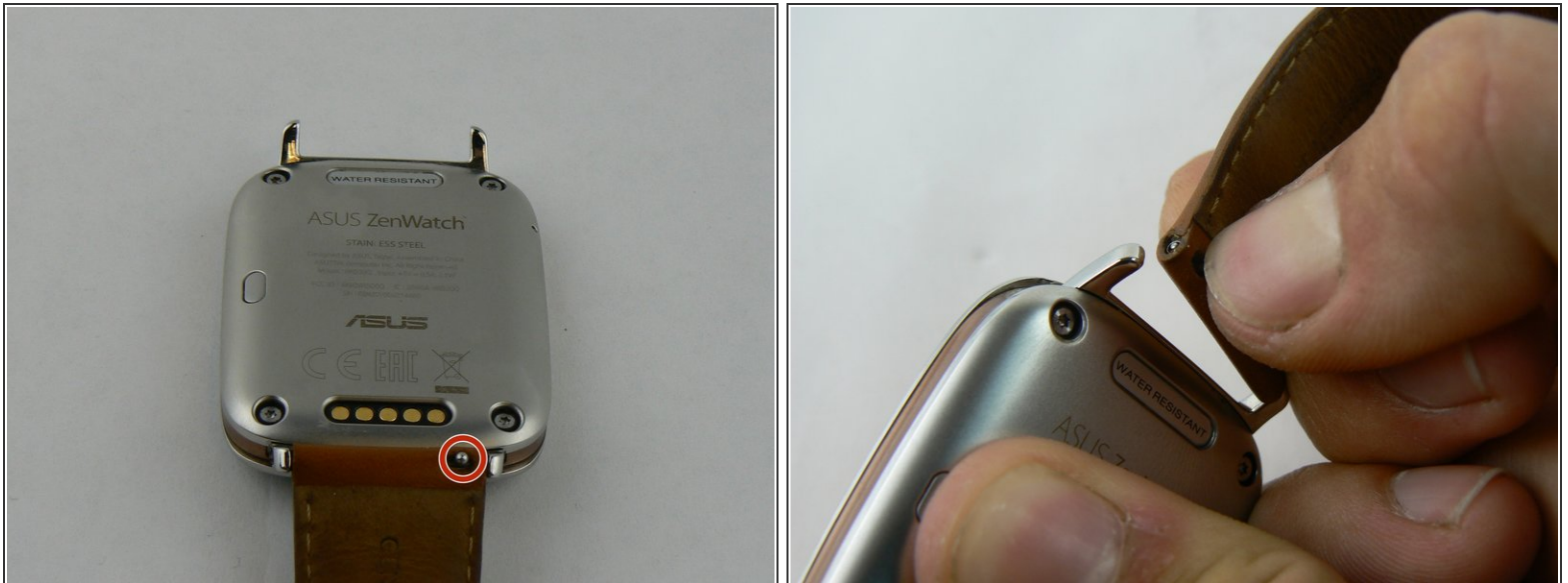
INTRODUCTION

Step-by-step guide in removing and replacing a faulty motherboard.

TOOLS:

- [Magnetic Project Mat](#) (1)
 - [Tweezers](#) (1)
 - [T5 Torx Screwdriver](#) (1)
 - [Heavy-Duty Spudger](#) (1)
 - [Phillips #000 Screwdriver](#) (1)
 - [iFixit Opening Tools](#) (1)
-

Step 1 — Watch Strap Removal



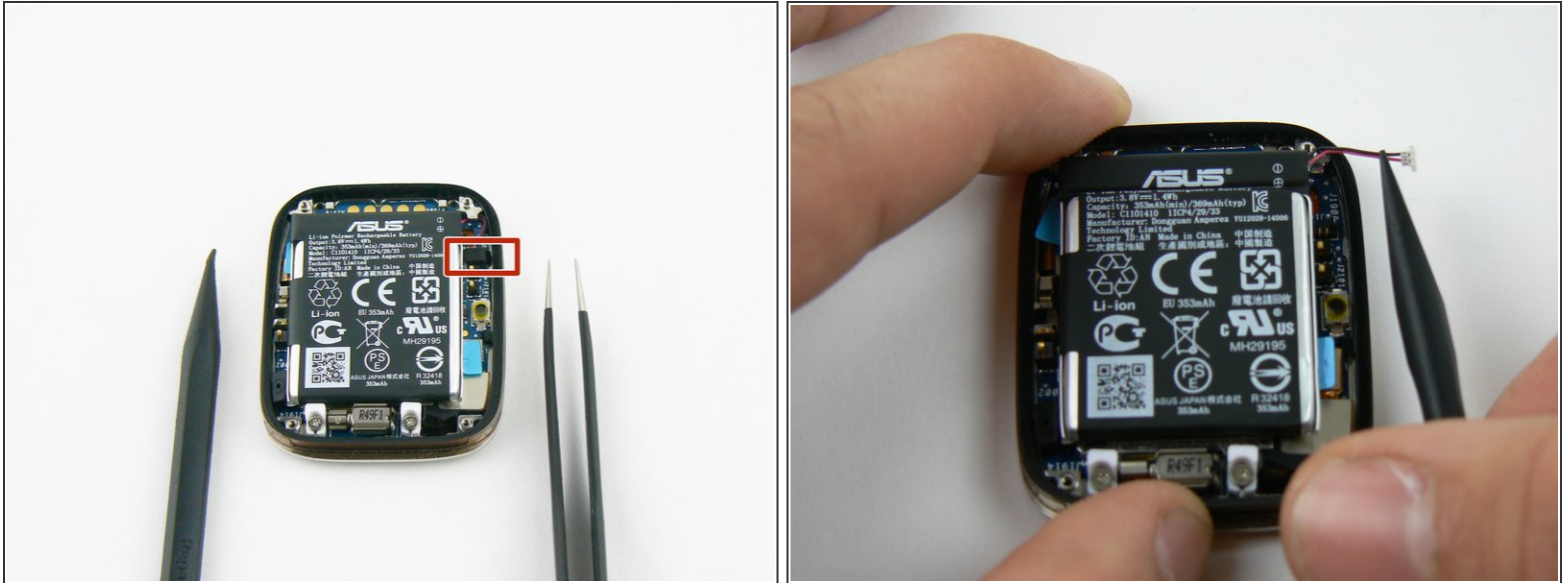
- On the strap there is a knob. Sliding this knob towards the opposite side of the strap releases the tension on the spring bar, allowing you to pull the strap out..

Step 2 — Battery



- Use the T5 Torx driver to remove the four screws on the case.
- ⓘ Use the magnetic pad to keep all your parts easily contained!
- The case will pry easily off with just gentle hand pressure

Step 3



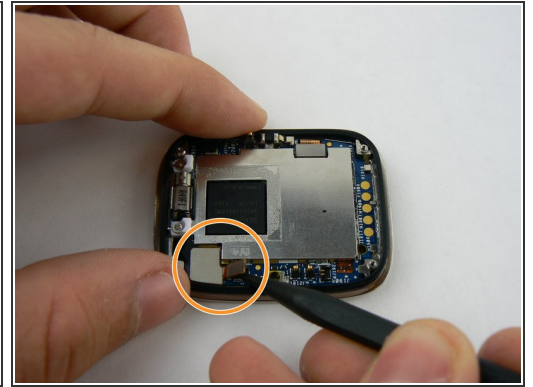
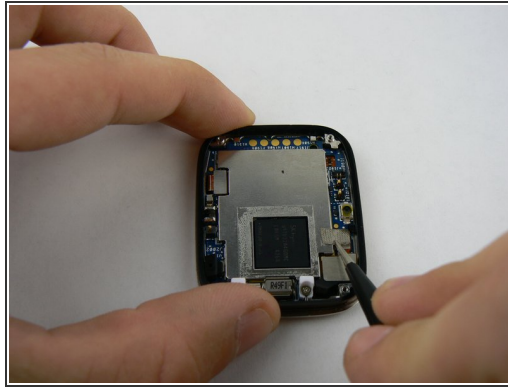
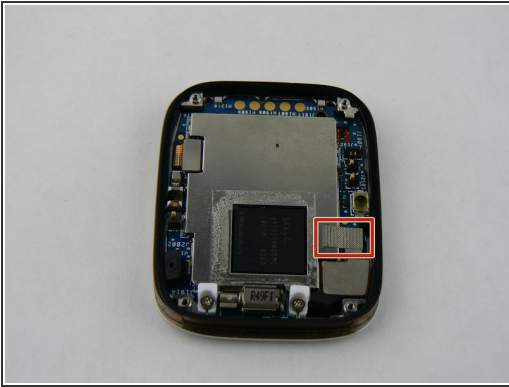
- Using the tweezers, gently remove the fabric protecting the battery connection.
- ⚠ Take care when removing the fabric. Too much force may damage the contact with the metal tweezers.
- Use the heavy duty spudger to gently push the contact towards the top of the case.

Step 4



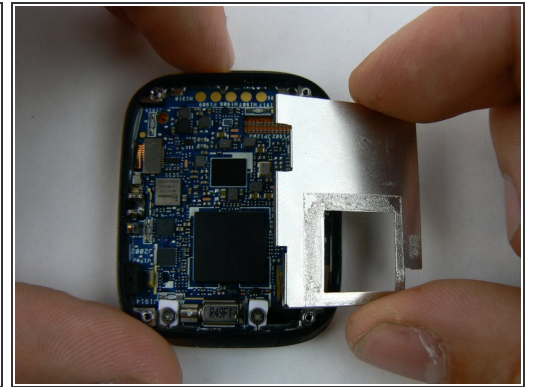
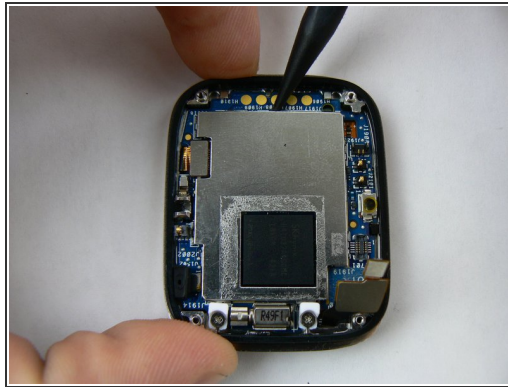
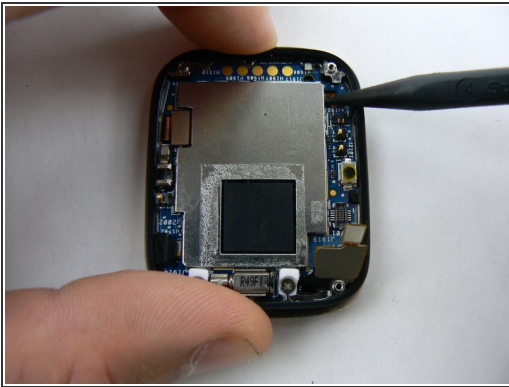
- Gently pry the battery up with the plastic pry tools

Step 5 — Motherboard



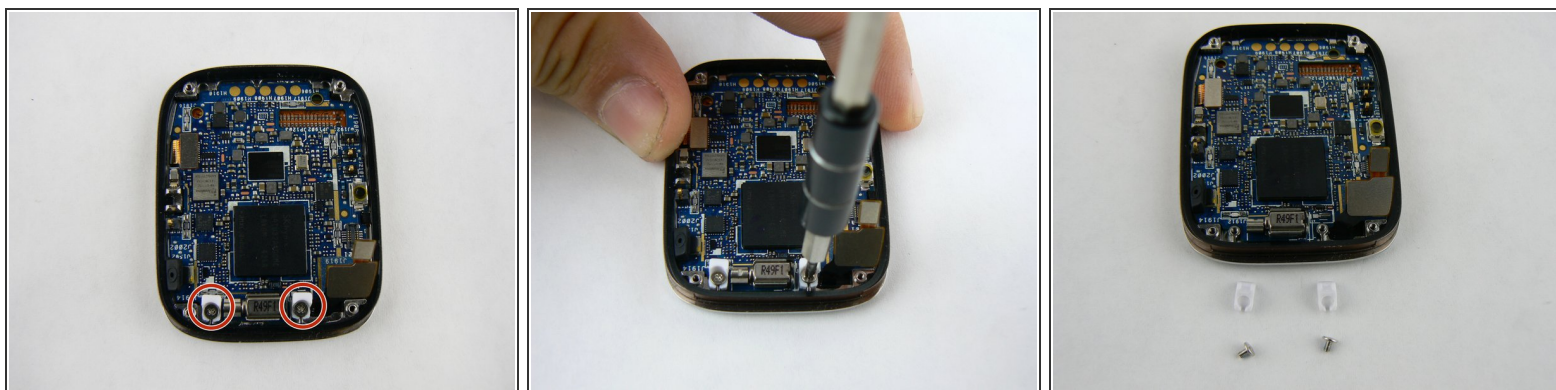
- With the metal tweezers gently remove the fabric covering the connection on bottom right
 - Using the heavy duty plastic spudger pry up on the connection ribbon.
- ⚠ There are two connection ports on the single ribbon. Do not use too much force as you may tear ribbon!

Step 6



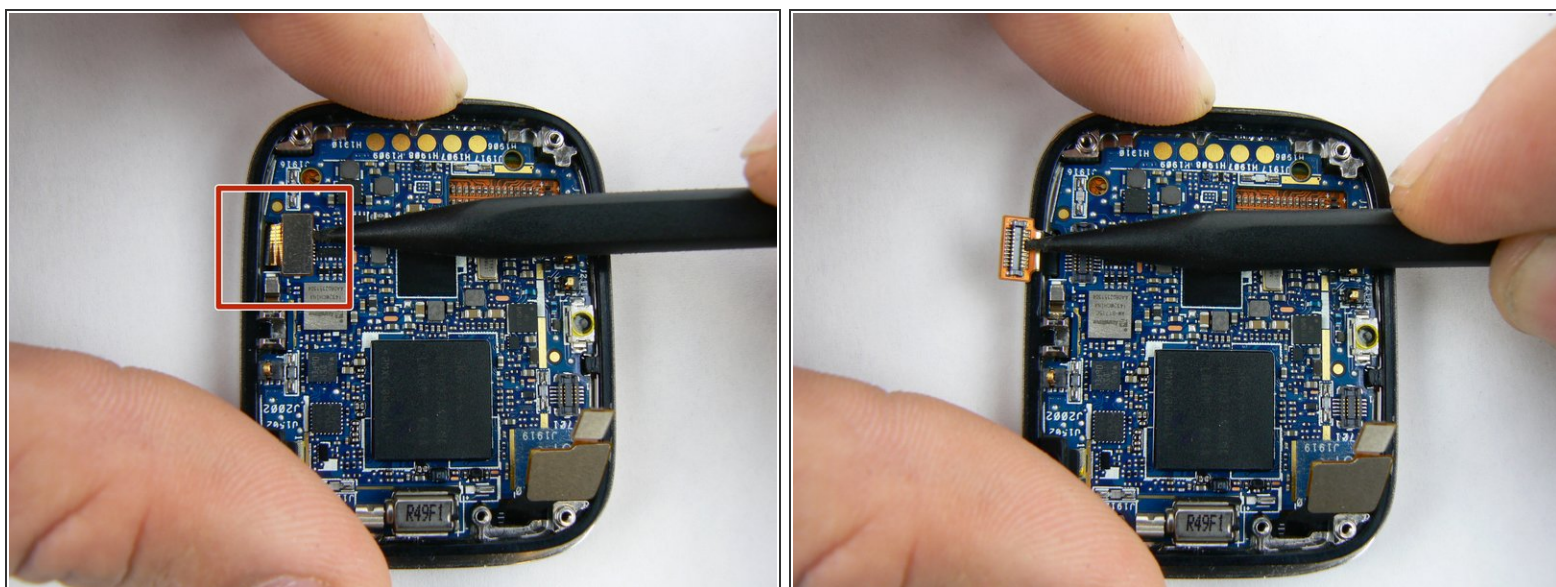
- The protective plate is now ready to be safely removed.
- With the heavy duty spudger pry up on the metal plate, in a counter-clockwise pattern
- ⓘ There are tiny notches on plate making it simple to pull up on each side.
- ⓘ A small strip of adhesive is on back of plate as well.
- Remove loosened plate and set aside.

Step 7



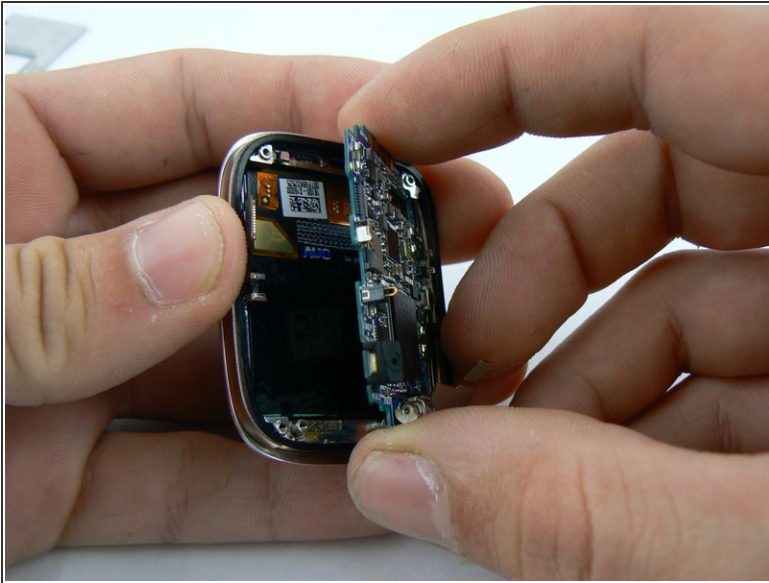
- With the 000 Philips screwdriver remove the screw and plastic retainer clips

Step 8



- With heavy duty spudger lift up on final connection ribbon located on left corner.

Step 9



- With all the connections disconnected the motherboard can be gently pried up and out of the watch case.

To reassemble your device, follow these instructions in reverse order.