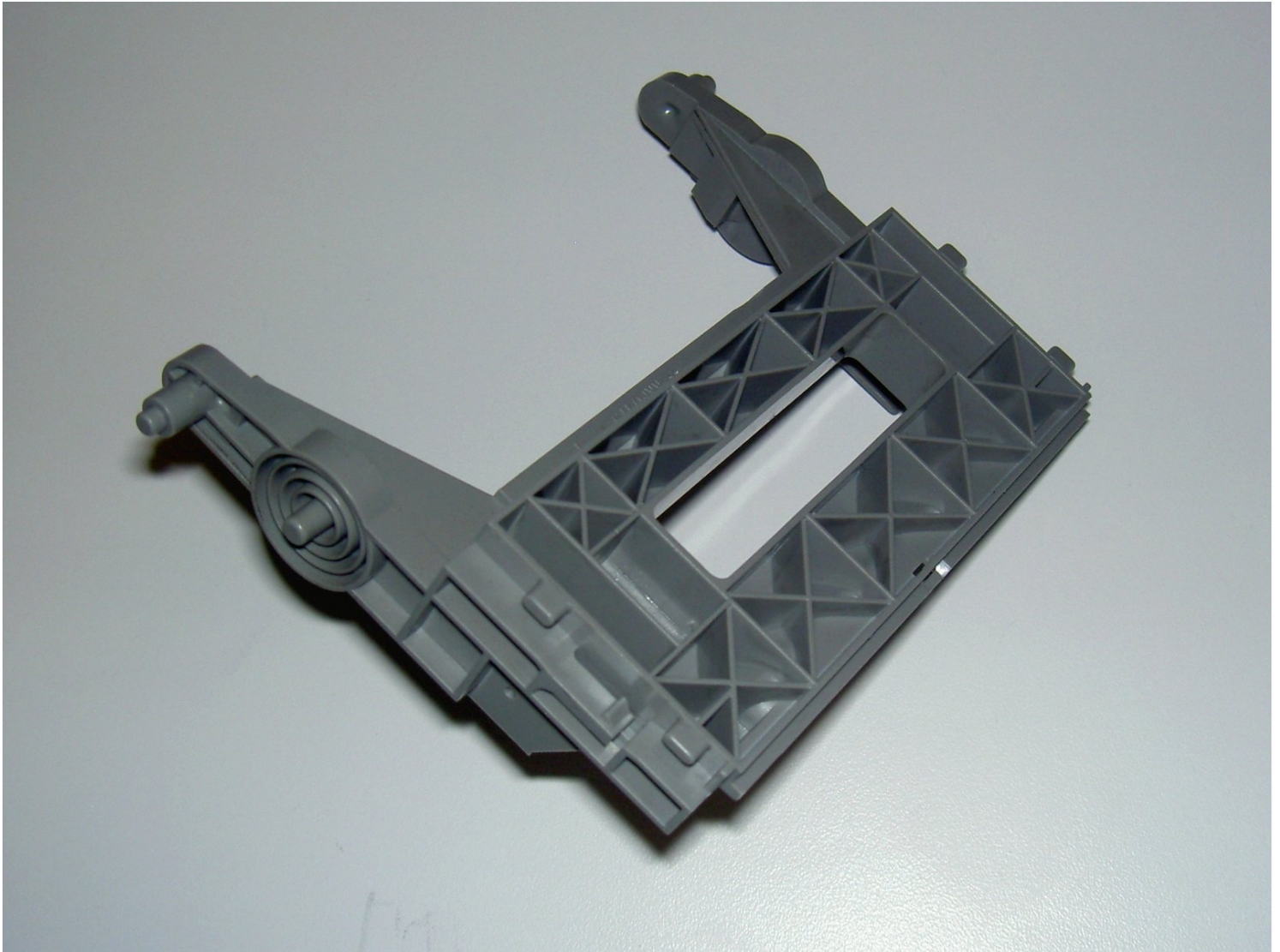




Panasonic SA-PM17 Tape Player Cover Replacement

This guide will show you how to replace the...

Written By: NathanB



INTRODUCTION

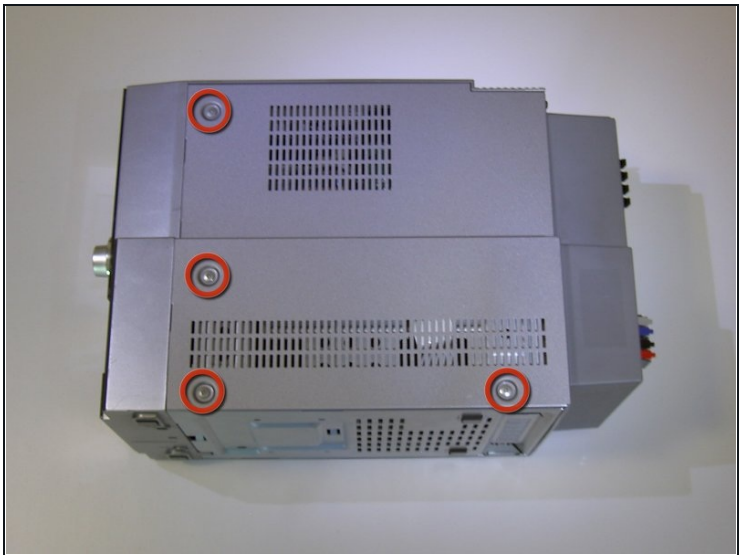
This guide will show you how to replace the tape player cover of your Panasonic SA-PM17. The tape player cover protects your cassette tape in the device. Cassettes are not used very much anymore however they are fragile media and it's recommended that you use the tape player with a cover.

TOOLS:

Tweezers (1)

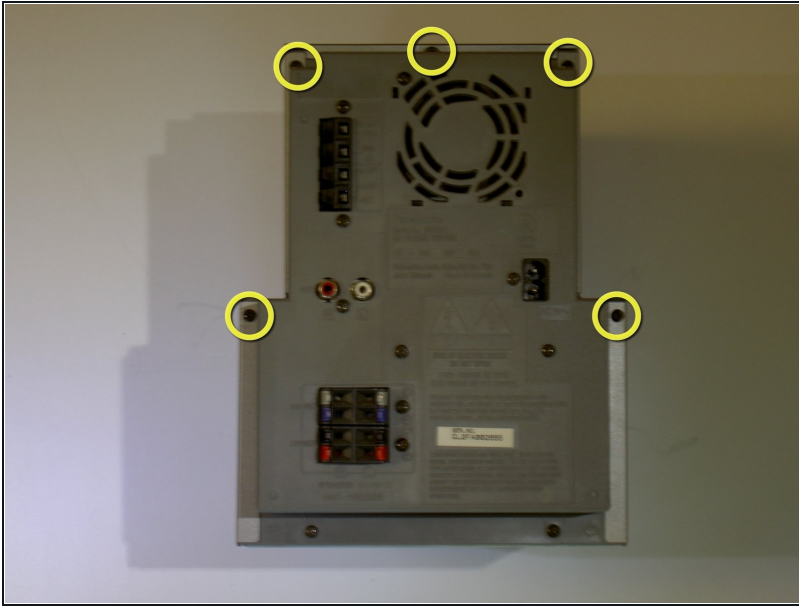
Phillips #0 Screwdriver (1)

Step 1 — Tape Player Unit



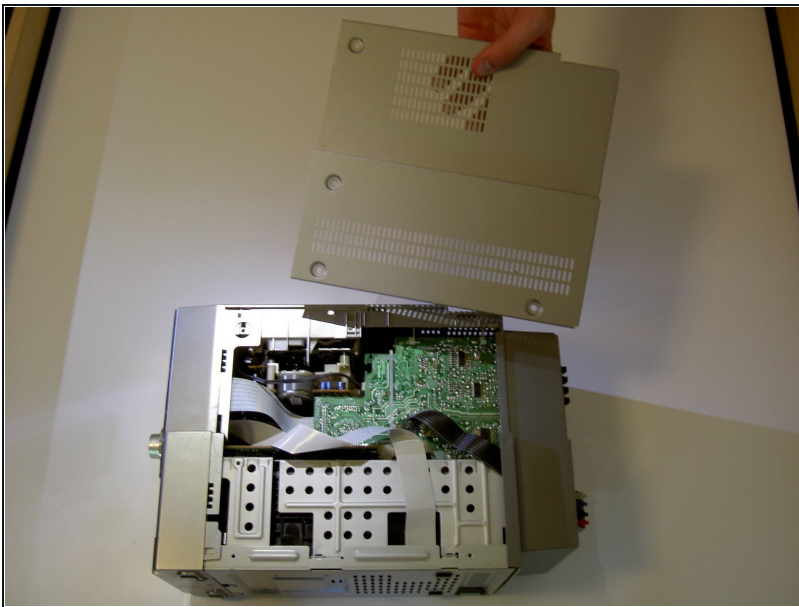
- With a Phillips #0 screwdriver, remove the eight 9.5mm screws attached to the left and right panels of the device.

Step 2



- With a Phillips #0 screwdriver, remove the five 11.5mm screws attached to the backside panel of the device.
- ⓘ Organize and label screws into a Ziploc bag for an easier reassemble process.

Step 3



- Detach the right and left panels from the device.

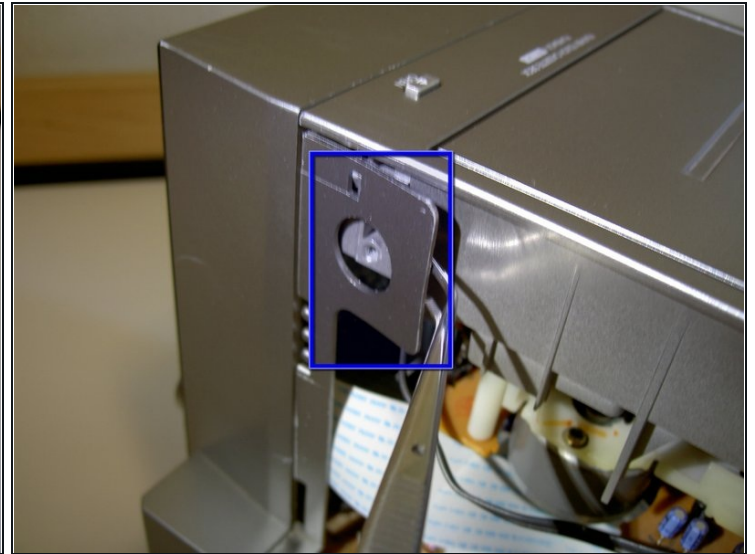
Step 4



- Lift the top panel and gently place alongside the device.
- Allow the top panel to rest on the back without reattaching it.

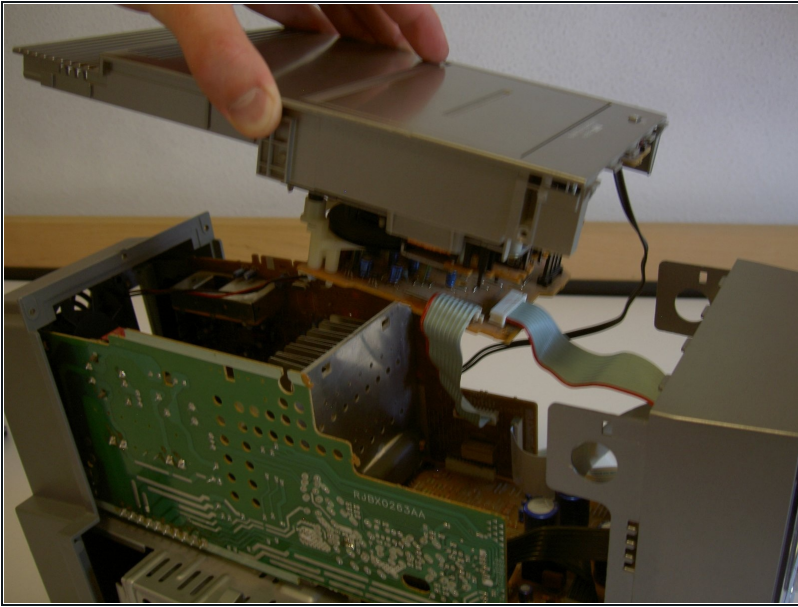
⚠ CAUTION: Do not extend the top panel too far from the device due to the connected wires.

Step 5



- With the [tweezers](#), detach the indicated tabs from the hooks by lifting upward.
- ① Disconnecting the tabs will release a portion of the front panel connected to the entire device.

Step 6

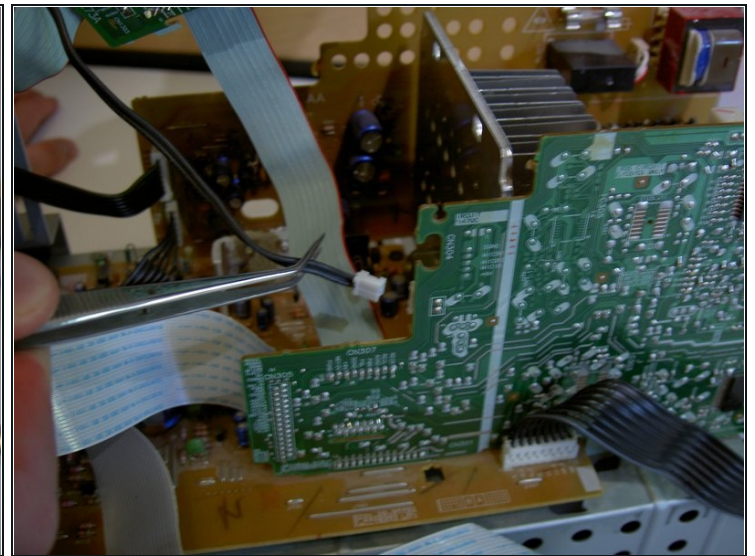
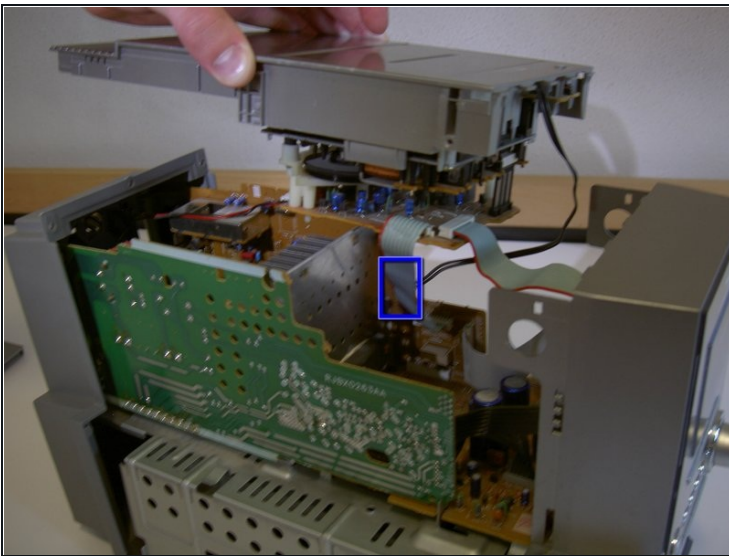


- Lift the top panel upward while firmly sliding it towards the back of the device.

⚠ CAUTION: Do not extend the top panel too far from the device due to the connected wires.

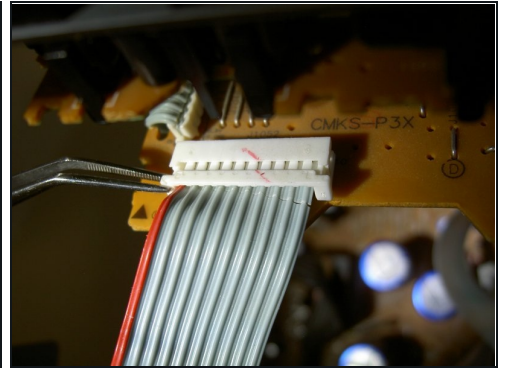
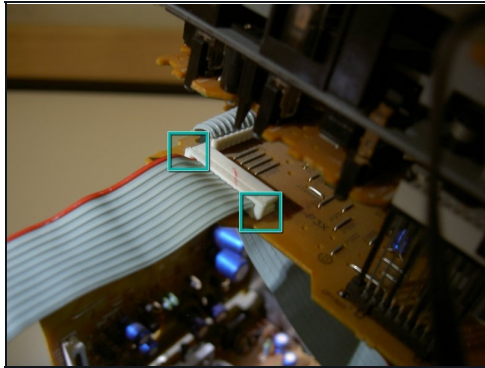
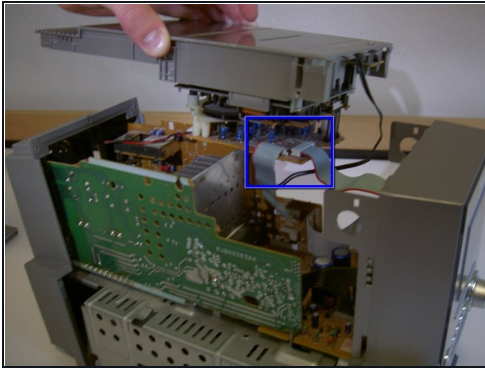
- ① The wires connected to the top panel will need to be disconnected in order to completely detach the panel.

Step 7



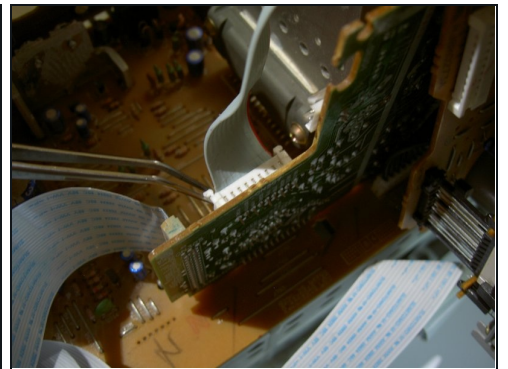
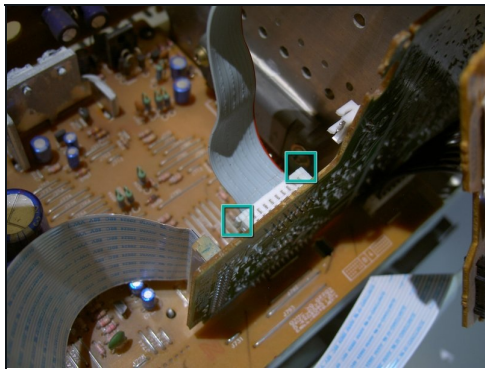
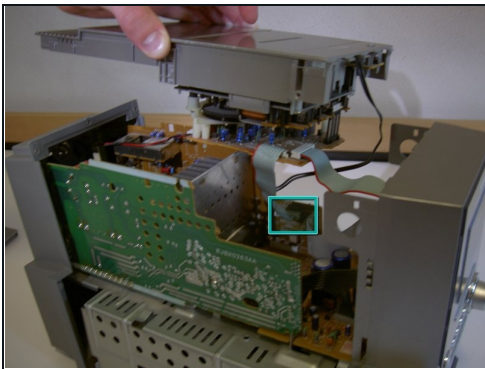
- Disconnect the black wire by gripping the wire at the base and pulling gently until released.

Step 8



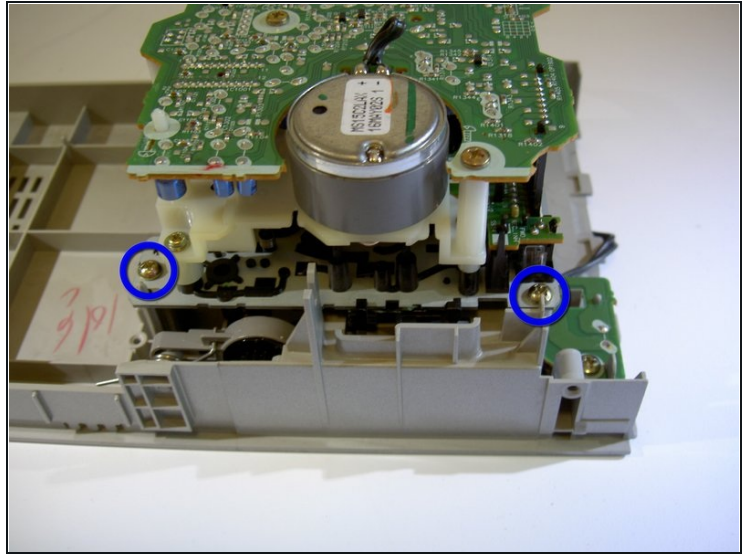
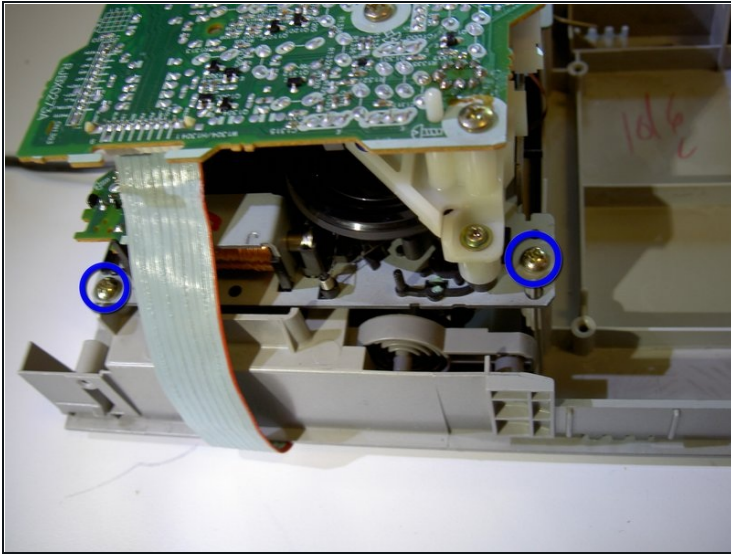
- This step deals with the indicated area of the device.
- Using the tweezers, detach the indicated tabs so that the cord may be released from the restraints.
- Gently pull on the cord, near its base, until it comes free of the restraint.

Step 9



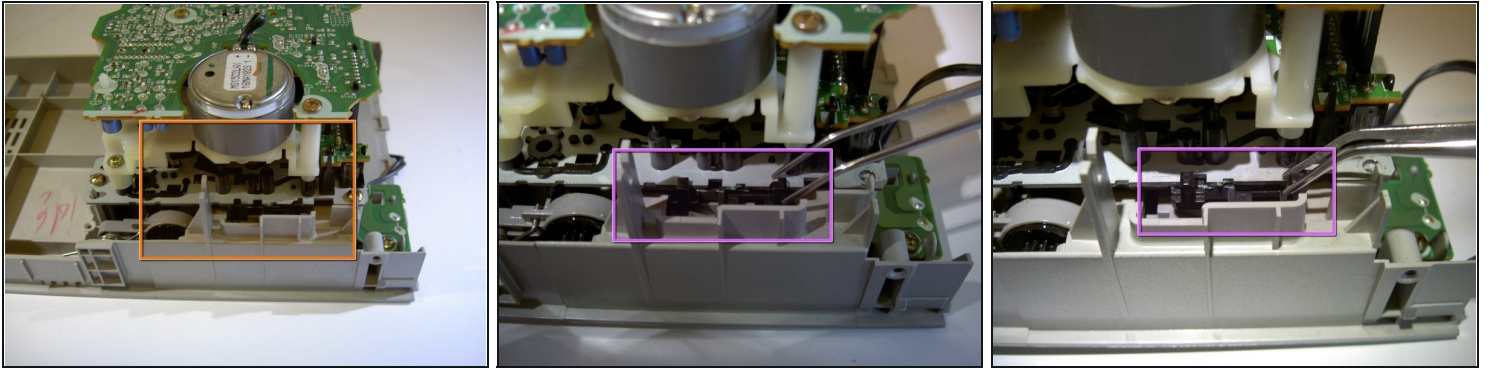
- This step deals with the indicated area of the device.
- Lift the indicated tabs out until the restraint looks like the final picture.
- Gently pull on the cord until it is released from the attachment.
- The top panel is now disconnected from the device.

Step 10



- Remove the four 12.1mm screws using a Phillips #0 screwdriver.
- ① Organize and label screws into a Ziploc bag for safe keeping and easier reassembling process.

Step 11

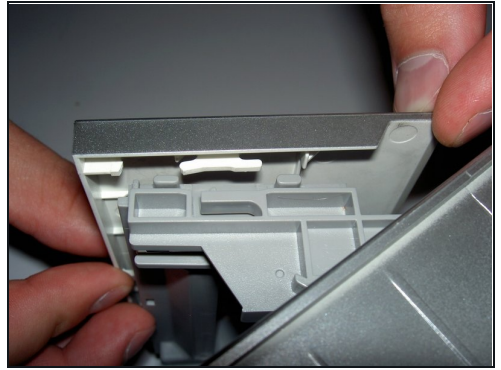


- This step deals with the indicated area.
- Using the tweezers, pull the indicated latch to the right to disconnect the tape player unit from the top of the device.
- While holding the latch to the right, lift the unit up from the plastic.

⚠ CAUTION: When the latch is disengaged, the tape cover may push out and force the rest of the apparatus to pop up. This is normal, but be careful that the tape cover does not pop out too quickly.

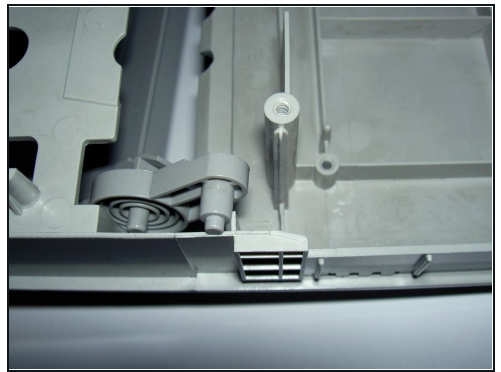
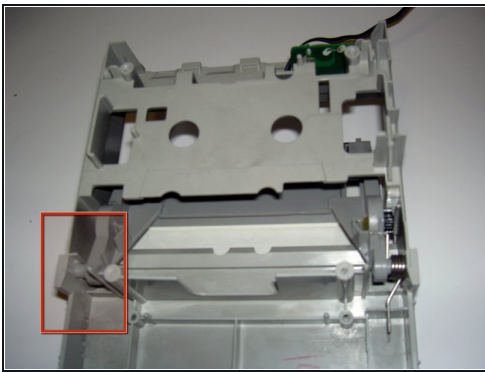
ⓘ NOTE: When placing this unit back on the device, you can simply push the unit into position. The latch will automatically snap into position.

Step 12 — Tape Player Cover



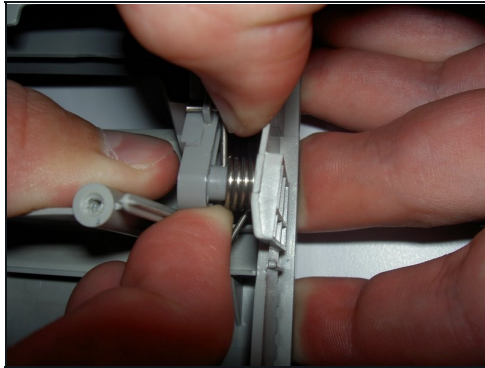
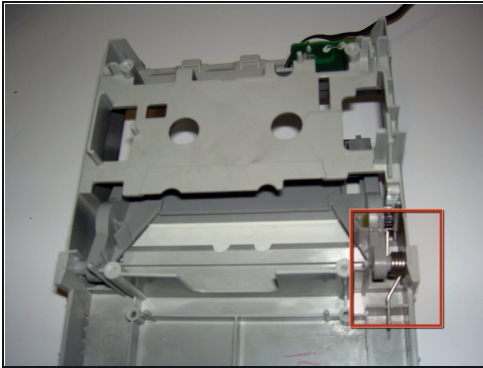
- Using your thumbs, push the casing forward.
- ① Note the position of the tabs in these pictures.
- ① Once you've slid the case forward, it should come loose to remove.

Step 13



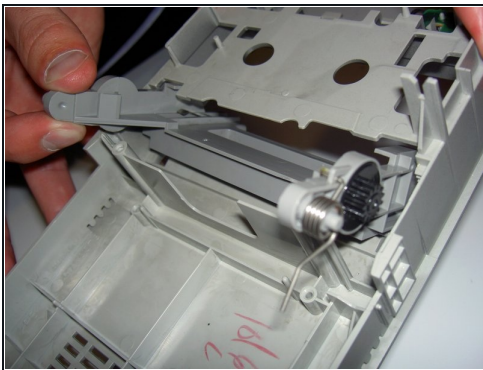
- Pull back on the peg while pulling forward on the tab until the peg comes out of its hole.
- Lift the peg up and allow it to rest on top of the casing, as indicated.
- ① This step requires some force.

Step 14



- Pull back on the peg while pulling forward on the tab.
 - Once the peg is loose of its hole, lift upward until it is clear of the tab.
- ⓘ This step will also take some force.

Step 15



- Lift the cover up and out from the inside of the top section.
 - If at first the cover does not come free, jiggle it around until it does. Do not force it out.
- ☑ Note the position of the spring and gear, then remove and place them on your new tape player cover.

To reassemble your device, follow these instructions in reverse order.