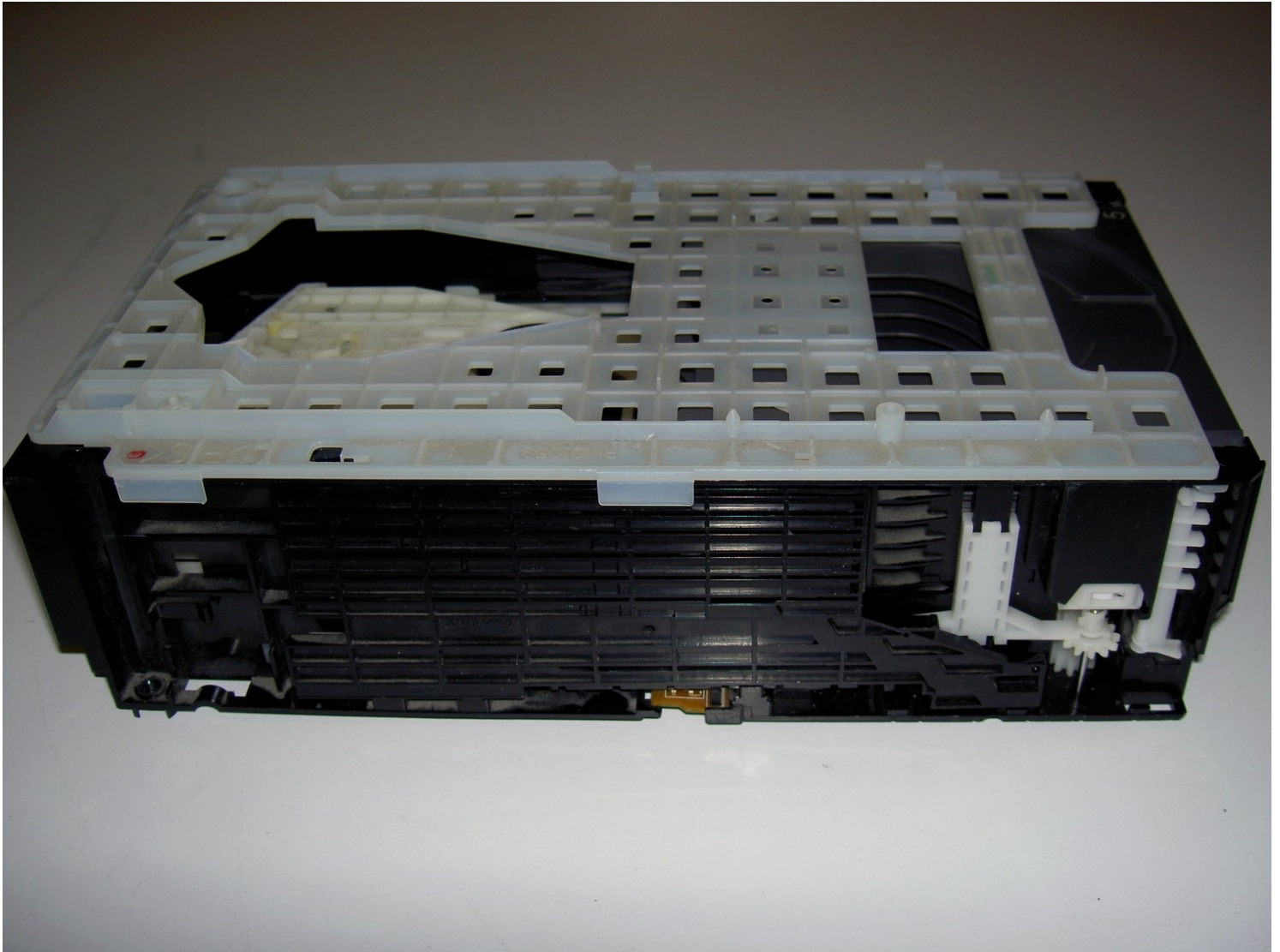




Panasonic SA-PM17 CD Tray Unit Replacement

This guide will disassemble the device to the...

Written By: NathanB



INTRODUCTION

This guide will disassemble the device to the point where the CD tray unit can be replaced with a new one.

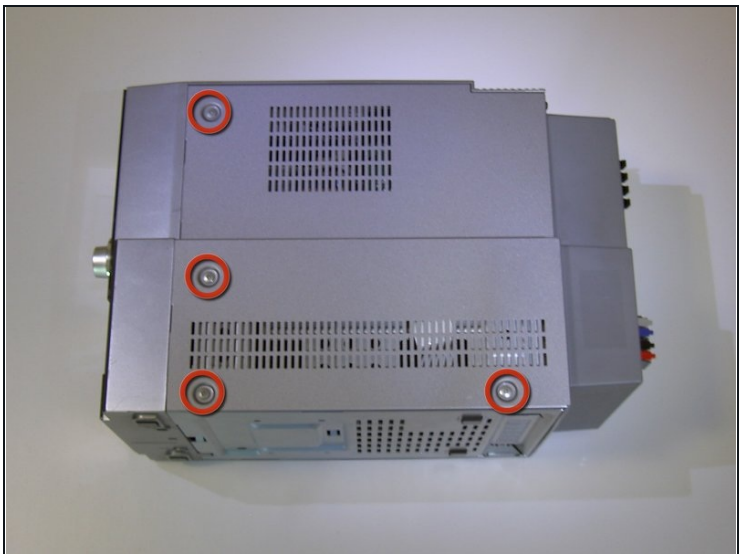
TOOLS:

Flashlight (1)

Tweezers (1)

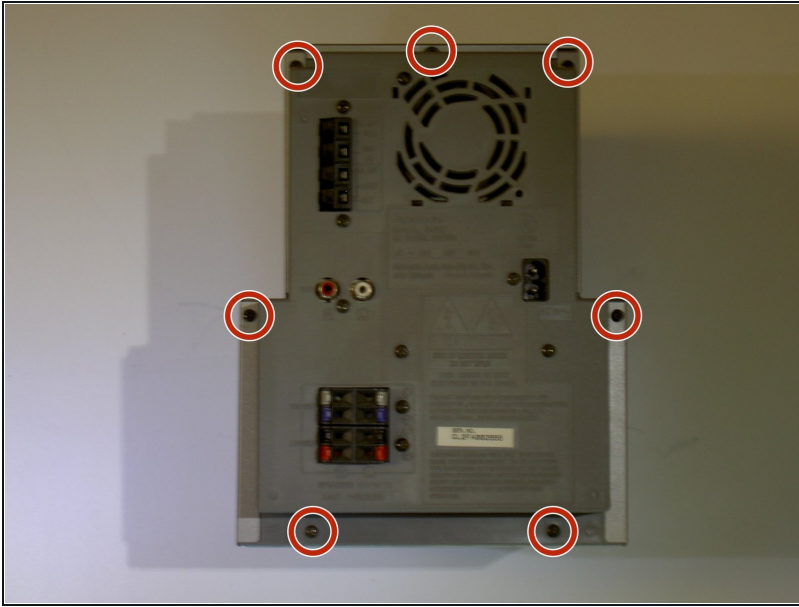
Phillips #0 Screwdriver (1)

Step 1 — Disassembling front of the Panasonic SA-PM17



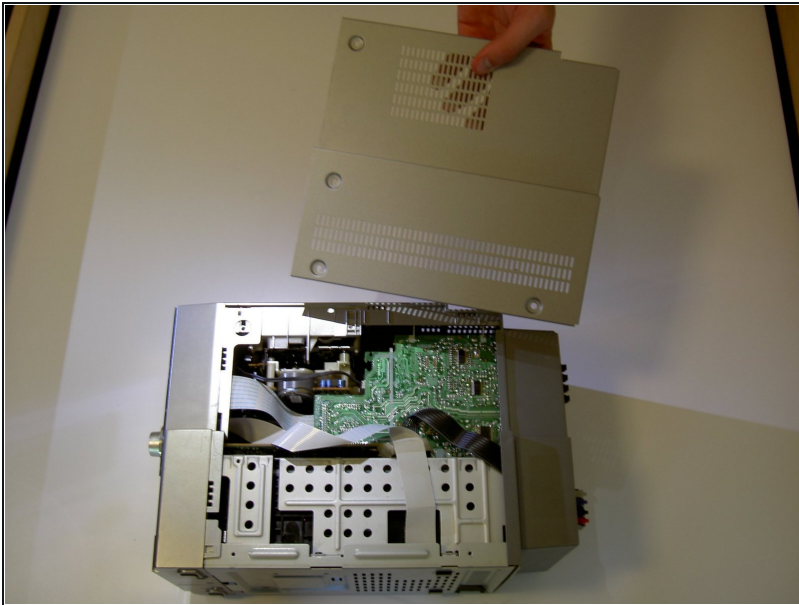
- Using a Phillips screwdriver, remove the eight 9.5 mm screws on the left and right sides of the device.

Step 2



- Remove these seven 11.5 mm screws and place aside.

Step 3



- Lift the right side off of the device and place aside.
- Repeat for left side.

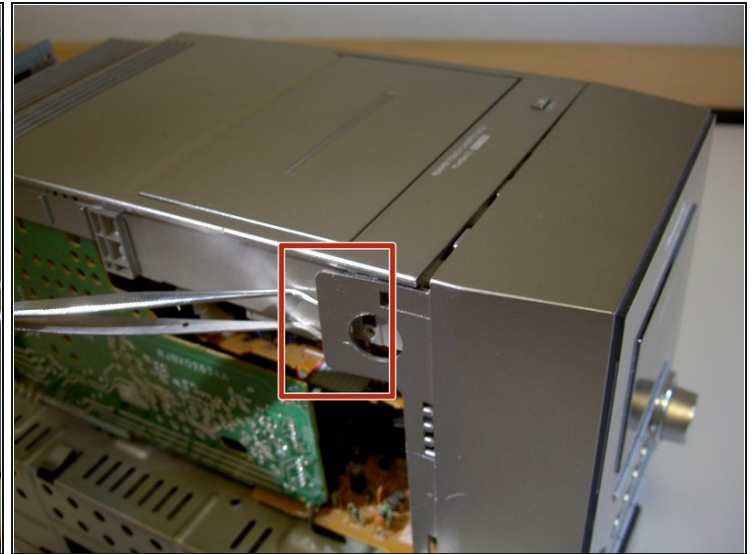
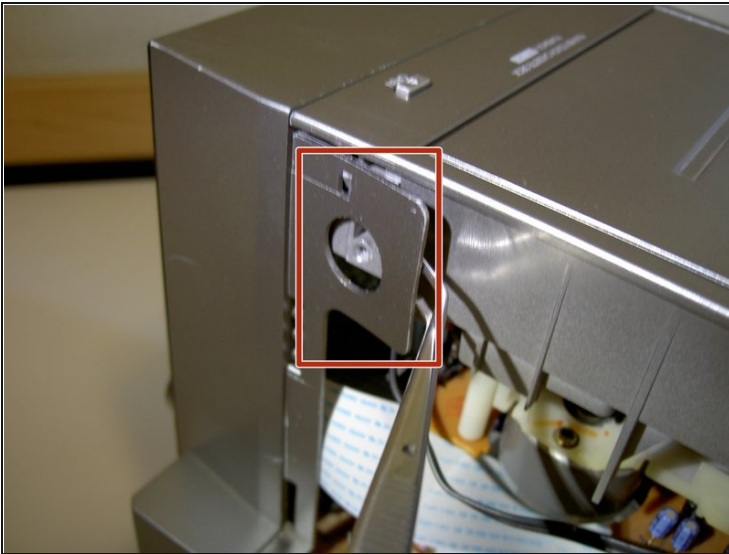
Step 4



- Lift the top gently but firmly from the back of the device. Allow it to rest on the back without reattaching it.

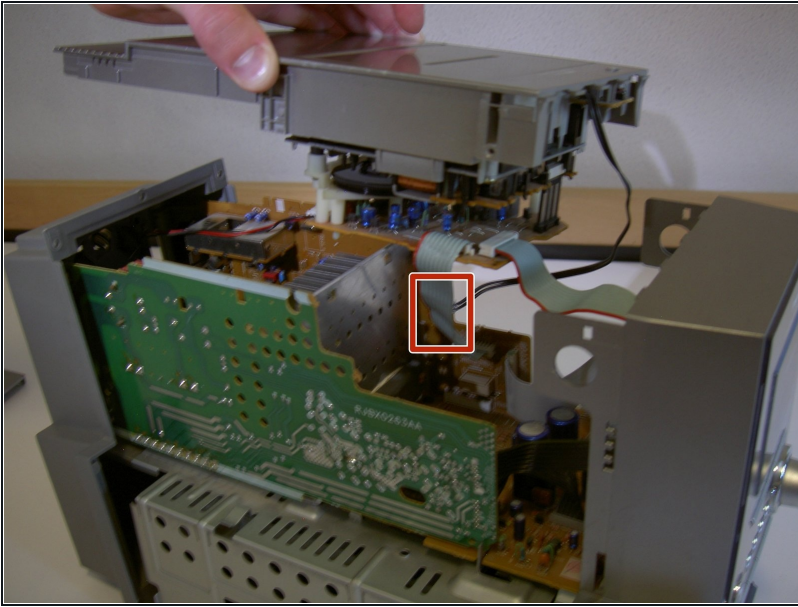
⚠ Do not pull the top too far as there are wires attached to it.

Step 5



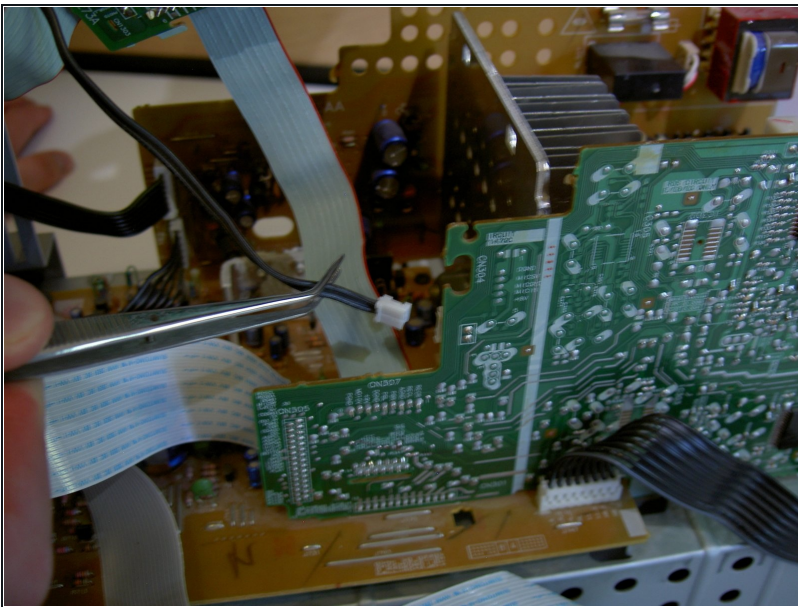
- Gently lift up on the indicated tabs to disengage them from the hooks holding them in place.

Step 6



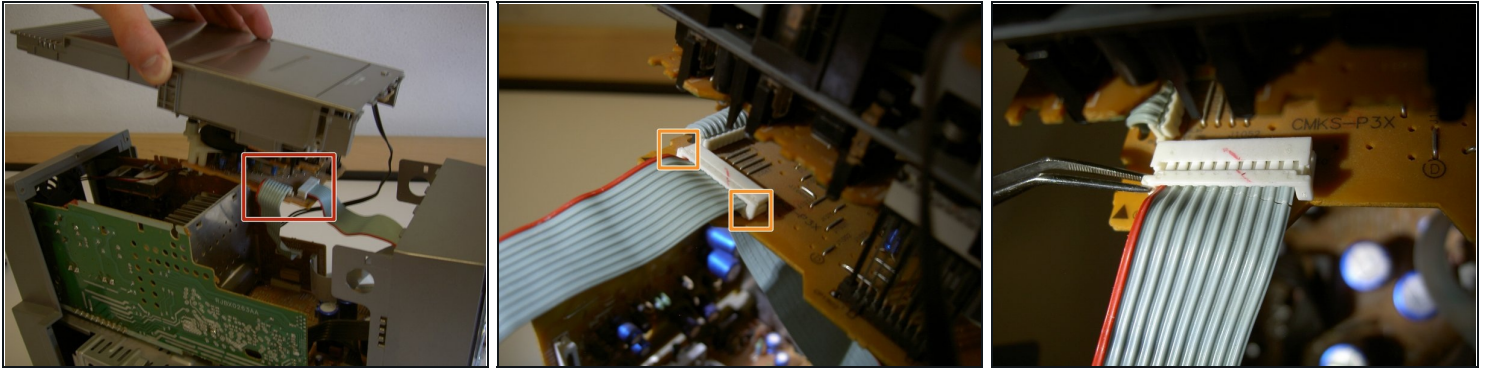
- Lift up the top while firmly sliding it towards the back of the device.
- ⚠ Do not lift the top up too high as there are cords that need to be detached before the top can be removed.
- The next step is a zoom-in of the indicated area.

Step 7



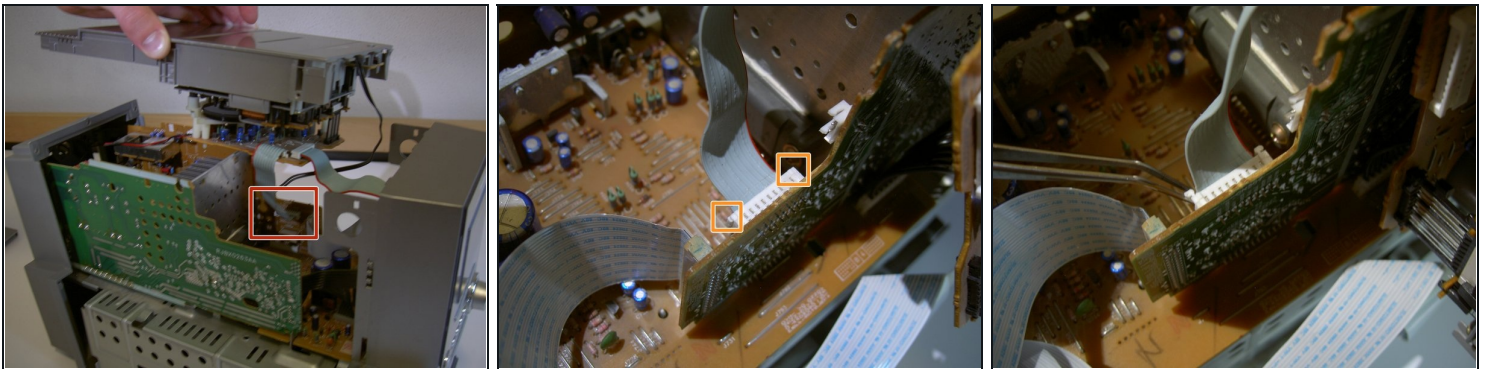
- Using forceps or fingers, remove the small black wire indicated.
- Grip the wire near its base and pull gently but firmly until it pops out of the slot.

Step 8



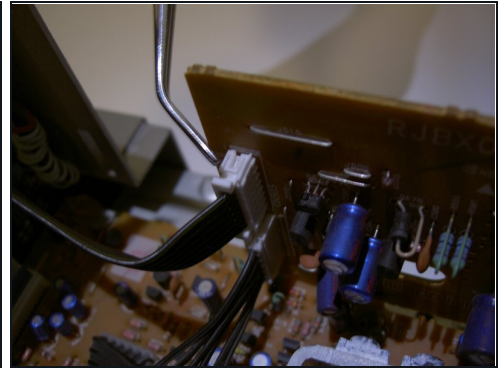
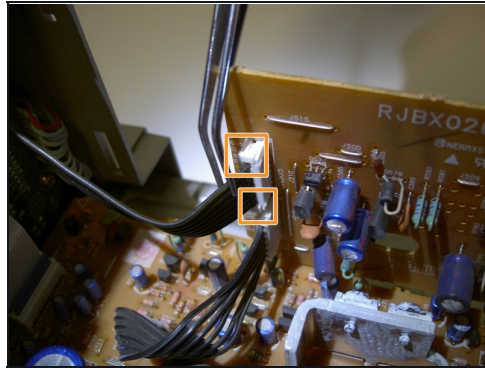
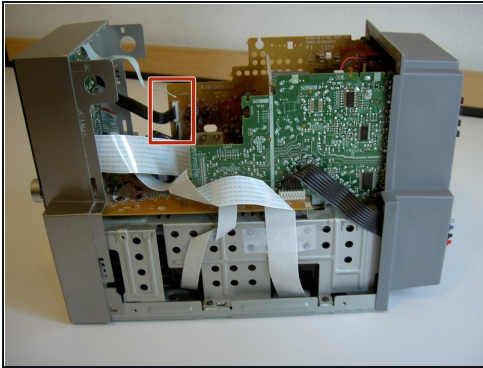
- This step deals with the indicated area of the device.
- Using fingers or [tweezers](#), lift the indicated tabs out until the cord's restraint looks like the final picture.
- Gently pull on the cord near its base until it comes free of the restraint.

Step 9



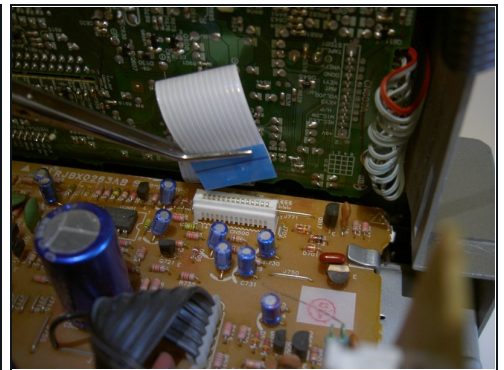
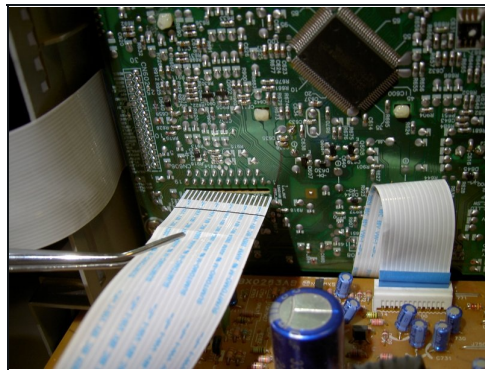
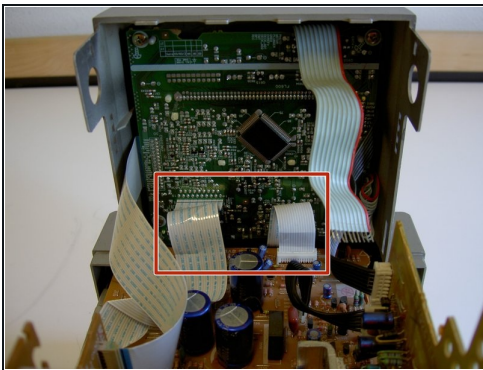
- This step deals with the indicated area of the device.
- Lift the indicated tabs out until the restraint looks like the final picture.
- Gently pull on the cord until it comes free of the attachment.
- The top section of the device should now be free of the body. Place it aside in a safe place.

Step 10



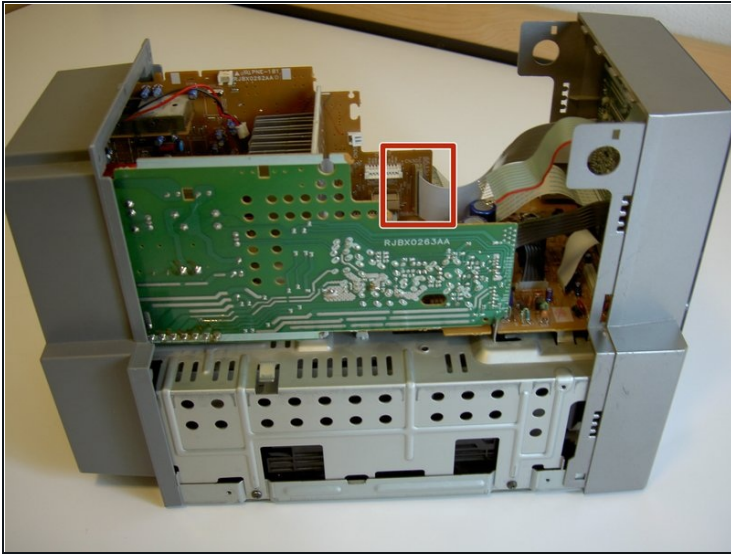
- This step deals with the indicated portion of the the device.
- Lift the indicated tabs out until they look like the final picture.
- Gently pull on the cord until it comes free of its restraint.

Step 11



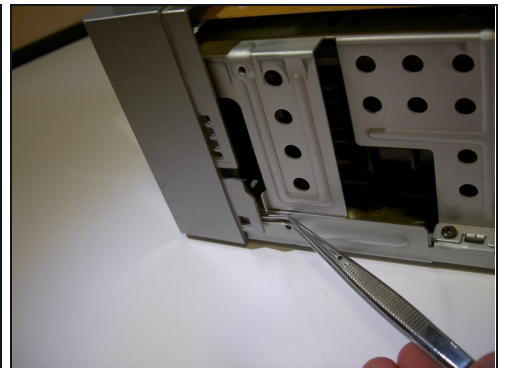
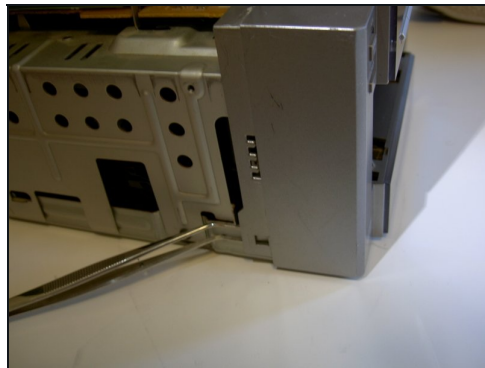
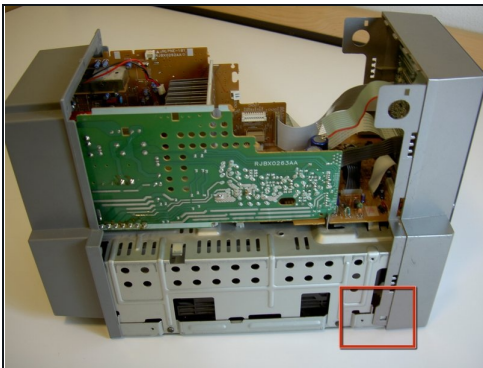
- This step deals with the indicated area of the device.
- Neither of the indicated cords have restraints on them like the previous ones. Use tweezers or fingers to pull firmly on the base of each cord until it comes free.

Step 12



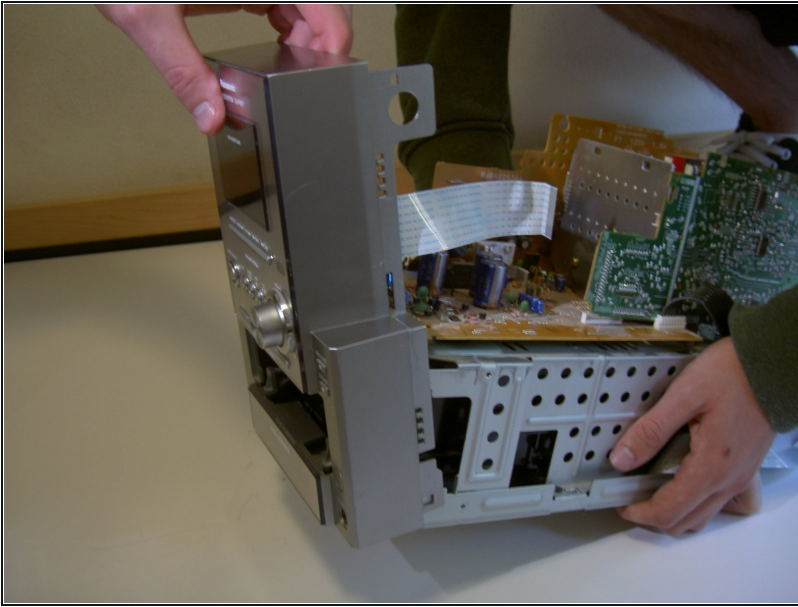
- This step deals with the indicated area of the device.
- Use tweezers or fingers and firmly pull straight out on the cord until it comes free.

Step 13



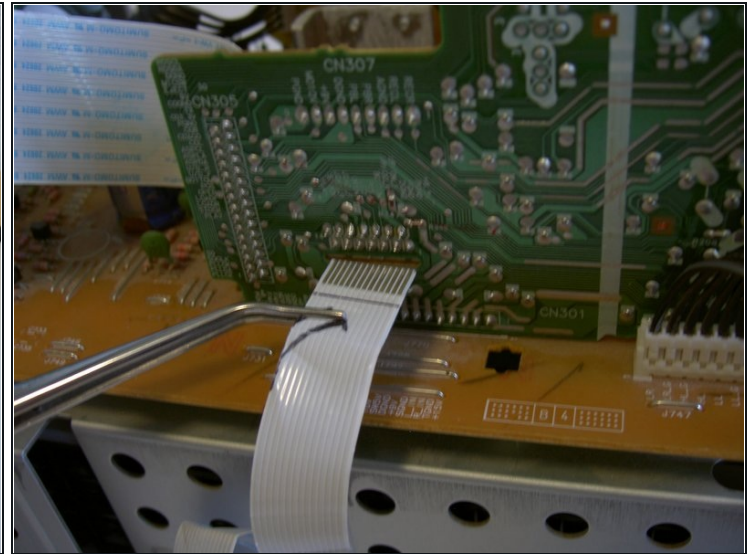
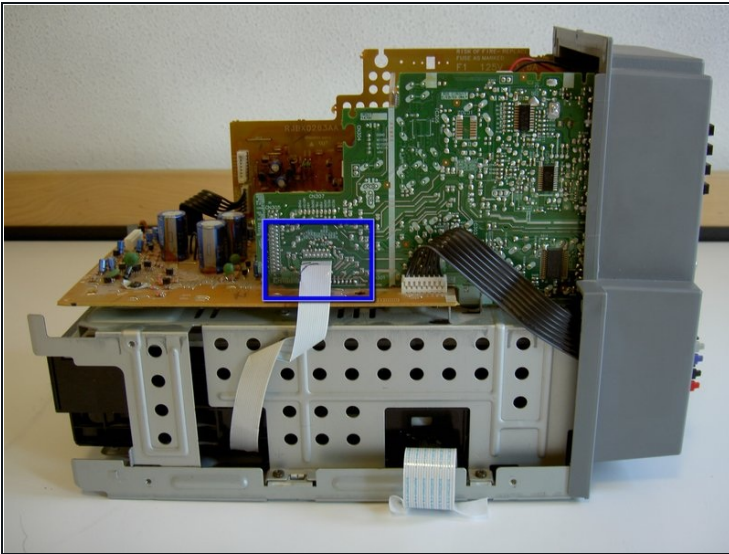
- This step deals with the indicated area of the device.
- Using tweezers or fingers, lift gently on the tab indicated to free the front from the body of the device.
- Rotate device 180 degrees and repeat for other side.
- Rotate the front slightly forward to keep the tabs from re-engaging on their hooks.

Step 14



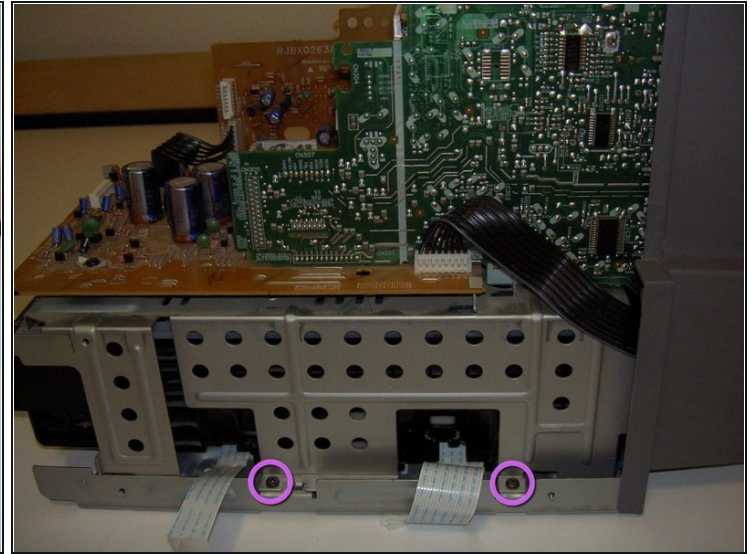
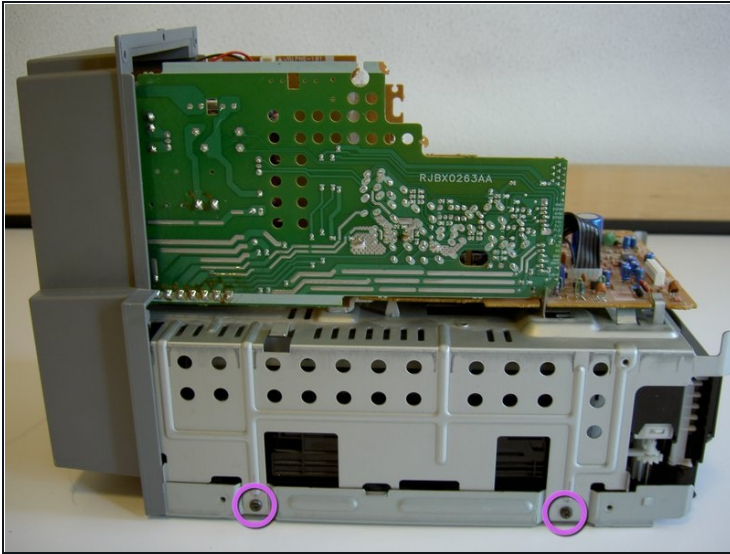
- Wiggle the front gently while pulling it forward until it comes free of the body of the device.

Step 15 — CD Tray Unit



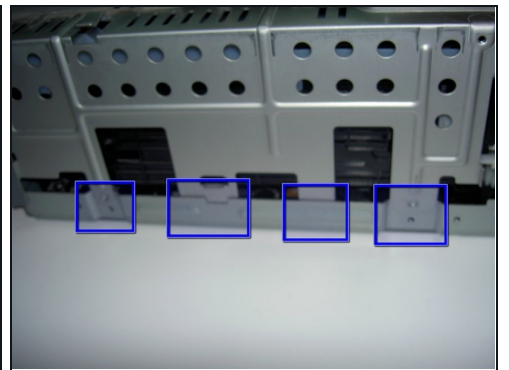
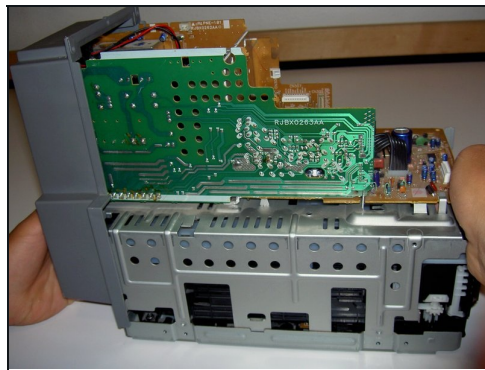
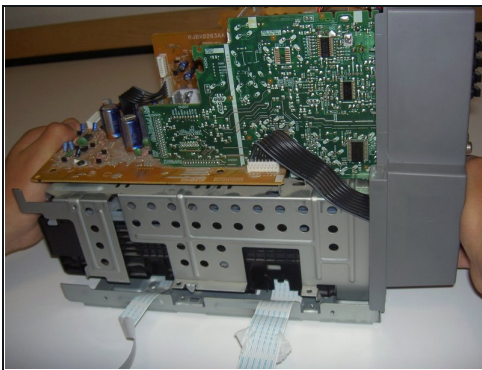
- This step deals with the indicated area of the device.
- Using [tweezers](#) or fingers, pull gently but firmly on the base of the cord until it comes free of its slot.

Step 16



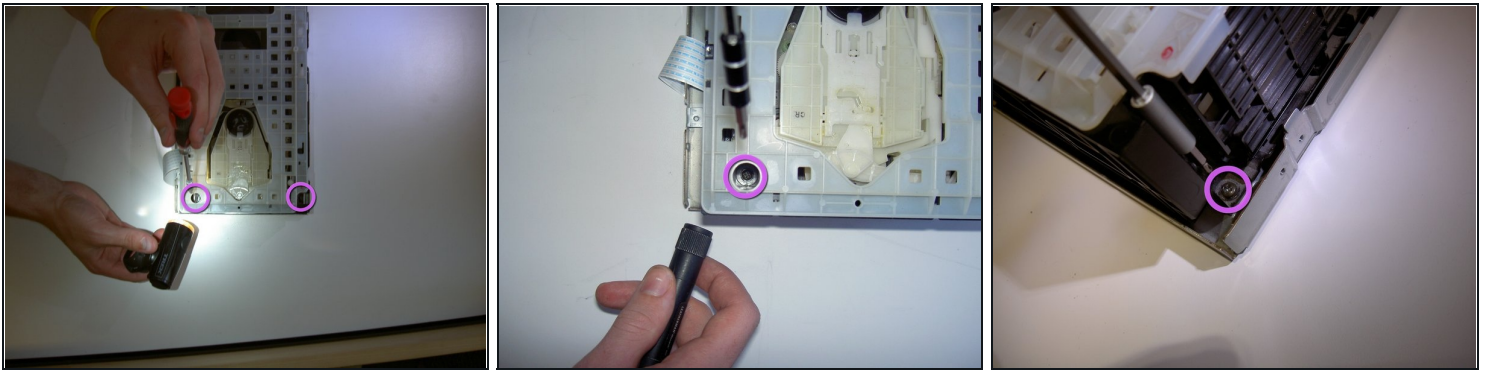
- Using a philips screwdriver, remove the four 9.5 mm screws indicated and place aside.

Step 17



- Lift the body directly up off of the base and place aside.
- Note the proper locations of the various tabs in the last picture.

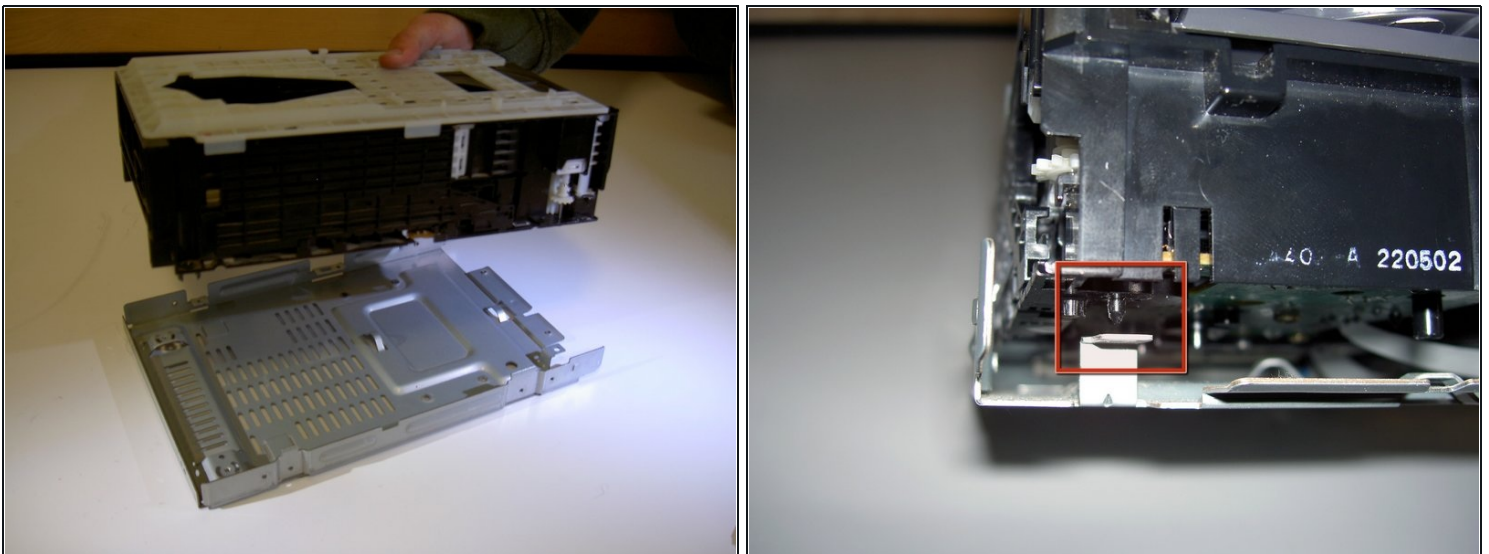
Step 18



- Remove the two 9.5 mm screws indicated using an extended screwdriver.

① Use a flashlight to view the screw on the left.

Step 19



- Lift the CD Tray Unit off of the bottom of the device and replace with new unit.
- When placing the new unit in, verify that the indicated pin is in its proper slot before putting the screws back on.

To reassemble your device, follow these instructions in reverse order.