



Milton Bradley Simon Light Bulb Replacement

This guide will show how to change the individual light bulbs of the Milton Bradley Simon game.

Written By: Simon Redondo



INTRODUCTION

This guide will show you how to change the individual light bulbs from the Simon game. The repair is fairly simple and only requires the use of a Phillips head screwdriver.



TOOLS:

- [Phillips #1 Screwdriver](#) (1)
-

Step 1 — Light Bulb



- Make sure the game is powered off by switching the On/Off switch to the left.

Step 2



- Take off the green and red switches on top of the game by pulling them off.

Step 3



- Flip the game over.

Step 4



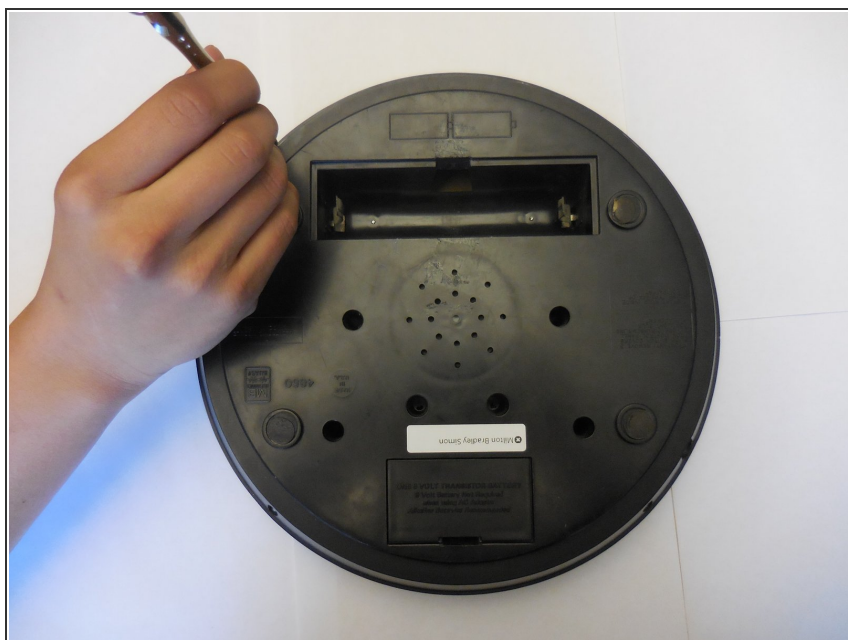
- Slide the battery cover off of the back.

Step 5



- Take out the batteries.

Step 6



- Use the Phillips Head screwdriver to unscrew the screws located at the four corners of the game.

Step 7



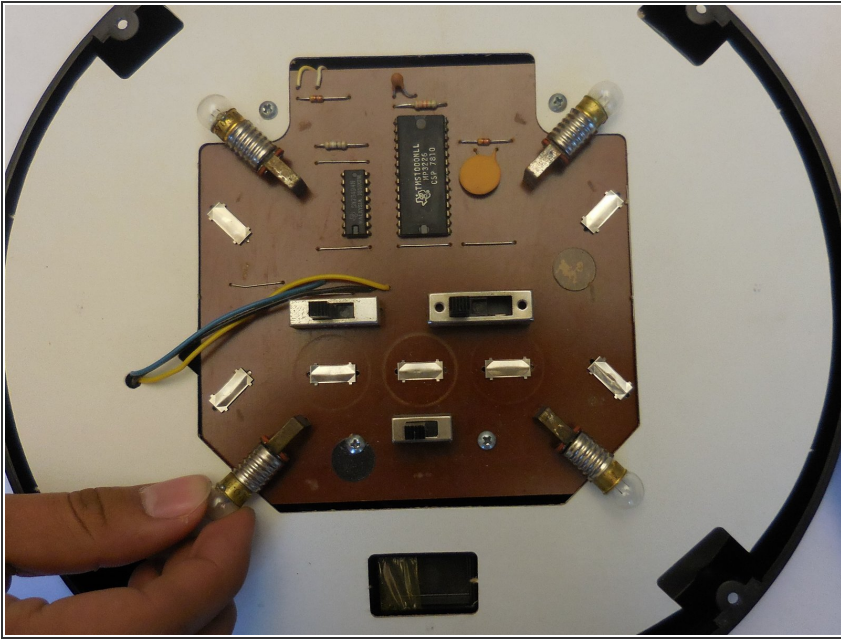
- Pull off the back plastic case of the game.

Step 8



- Carefully place the top half of the game aside.
- ⓘ The top half is the half with the colored panels. Carefully place this half aside so the buttons do not fall out of place.

Step 9



- Unscrew the 4 light bulbs from the bottom half of the game.

Follow these steps in reverse to reassemble the device.