



# Sphero BB-8 head Teardown & Cleaning

With this guide you can clean the head of the BB-8 droid from Sphero.

Written By: Albert Loosman



## Step 1 — this is the Sphero BB-8 droid.



- With this tutorial we are going to clean the wheels and upgrade the droid so we can clean the wheels again in the future.

## Step 2 — Pop of the head of BB-8



- The head is kept in place by magnets. The wheels are located inside the head and pick up all kinds of dirt so over time the wheels are getting stuck by all the dirt and BB-8 doesn't respond as it did when it was new.
- I thought i could pry the bottem out but that is not possible.



### Step 3 — Open the Head



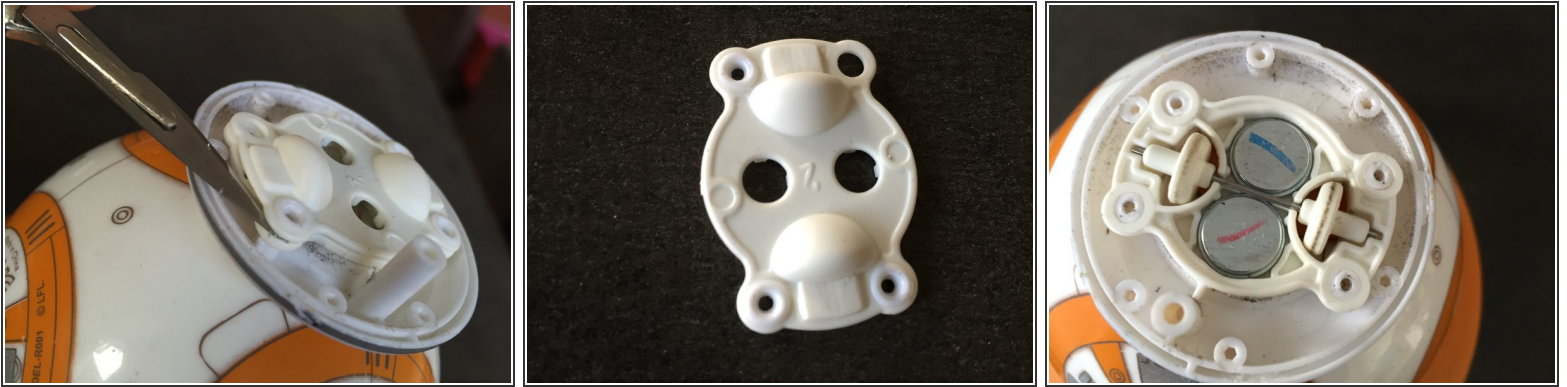
- use a plastic opening tool to pry the head open. There is some glue used so be careful not to use too much force.
- The hardest part is to break the glue. once this step is done the head is much easier to take apart in the future.

### Step 4 — put the head back on



- put the base of the head back on the body, this will keep the magnets in place.

## Step 5 — get access to the wheels



- cut the plastic rivets with a sharp blade. Make sure u don't loose any of the white plastic because it will be used again as a washer.
- when u loose or break one (like me) i will show you how to make a new washer later on.

## Step 6



- use a small screw to make thread inside the plastic rivets.
- I used some old laptop screws which I cut to the right size using a side cutter.
- screw the top plate back using the cut screws and washers.



## Step 7 — creating a washer



- use a perforator and an old bank or sim card to cut a plastic washer.
- Make a hole use a small screwdriver.

Om het apparaat weer te monteren, volg je deze instructies in omgekeerde volgorde.