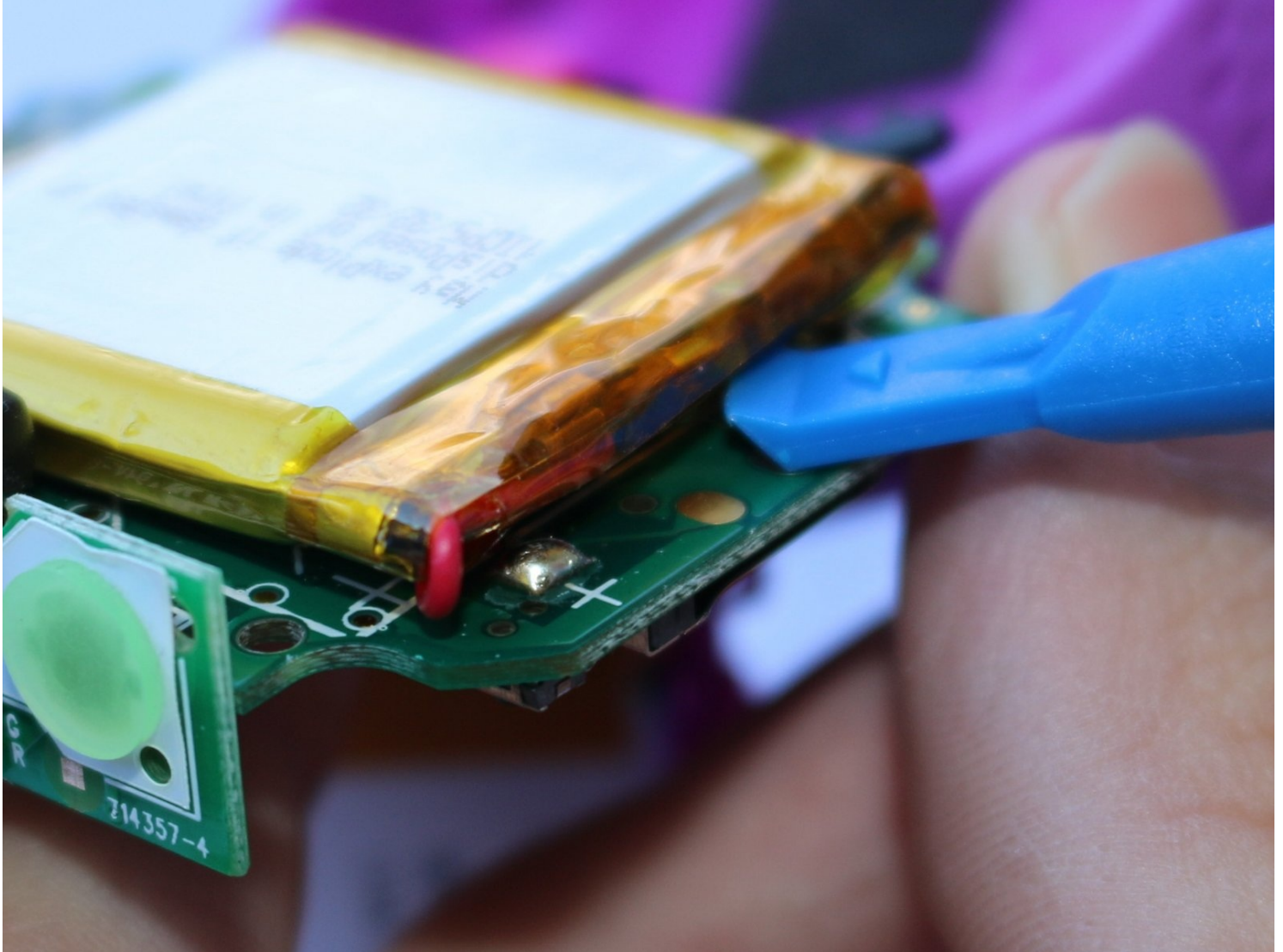




# VTech Kidizoom Action Cam Battery Replacement

The battery may sometimes malfunction in a...

Written By: Ross Anderson



# INTRODUCTION

The battery may sometimes malfunction in a device and may need to be replaced for the device to function again.

---

## TOOLS:

[Phillips #0 Screwdriver](#) (1)


[iFixit Opening Tool](#) (1)

[Soldering Iron 60w Hakko 503F](#) (1)

---

## Step 1 — Display Assembly



 Make sure that the master power switch is set to the (O) position.

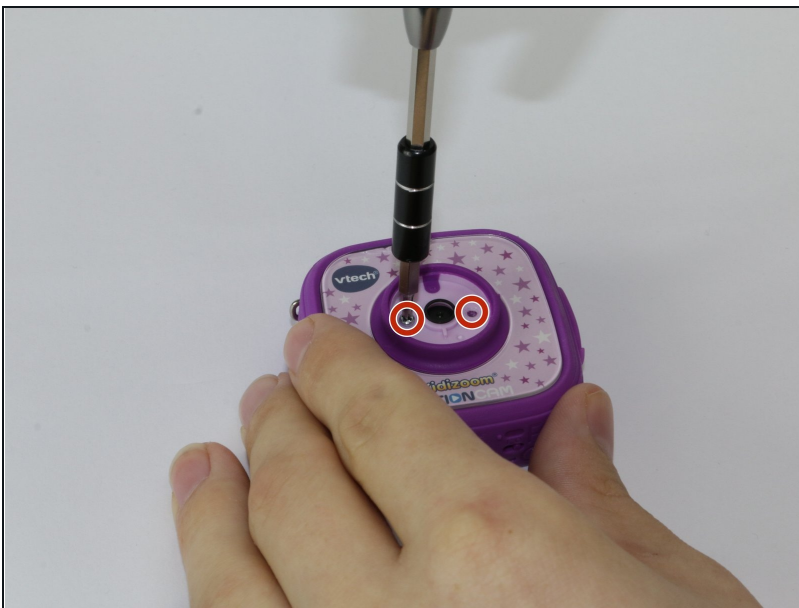
## Step 2



- Using a plastic opening tool, gently pry off the circular plating over the camera lens.

ⓘ The circular plating is held by a mild adhesive. It will not be necessary to replace this adhesive during the reassembly process.

## Step 3



- Use a #0 screwdriver to remove the two 2.5mm Phillips head screws located on the second layer of plating.
- Remove the second layer of plating previously held down by the screws by gripping it with your fingers and pulling upward.

ⓘ As there will be many screws being removed from the device, we recommend using a magnetic device such as the [iFixit Magnetic Project Mat](#).

## Step 4



- Pry off the transparent plating and paper design using a plastic opening tool.

## Step 5



- Unscrew the (4) 2.5mm Phillips head screws from the third layer of plating using a #0 screwdriver.

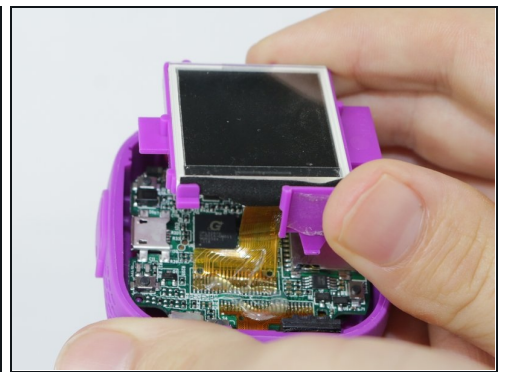


## Step 6



- Turn the camera around and gently remove the plating that surrounds the LCD screen by grasping it with your fingers and pulling away from the device.

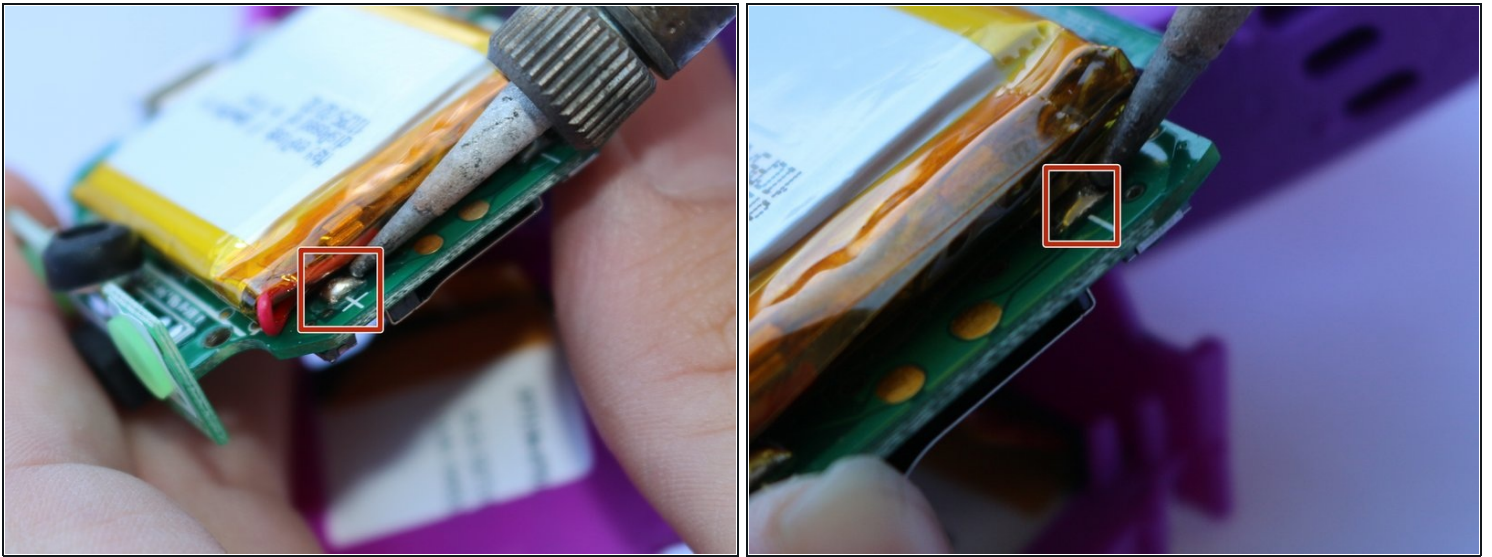
## Step 7



- Use the plastic opening tool to lift the LCD screen, including the purple casing and set it aside, revealing the motherboard and connector ribbon.

⚠ Exercise caution while performing this step, as any excessive pulling may tear the connector ribbon from the motherboard.

## Step 8 — Battery

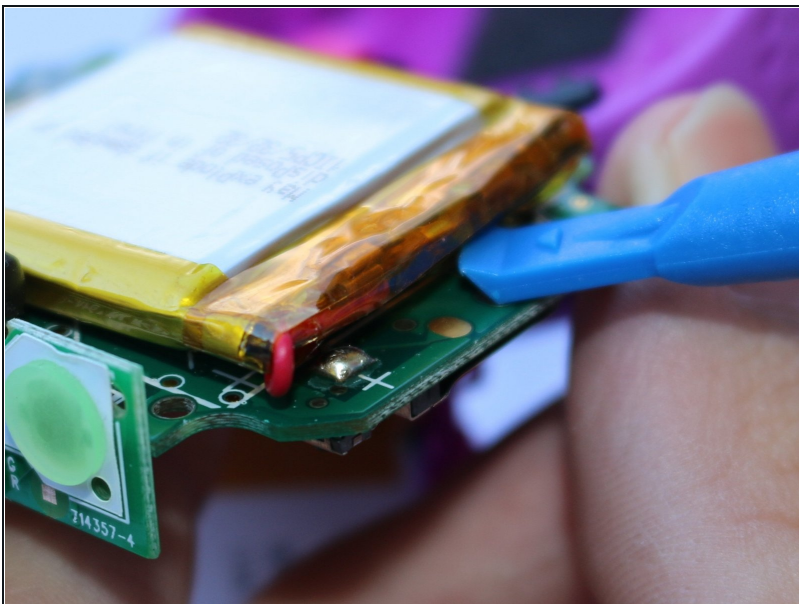


- Use the soldering iron to unsolder the battery wires connected to the motherboard by reheating the existing solder.

⚠ Do not cut the two wires at the same time as this can result in shocks.

⚠ Soldering Iron will be very hot and can be dangerous to touch.

## Step 9



- Gently lift the battery away from the motherboard using a plastic opening tool.

---

To reassemble your device, follow these instructions in reverse order.