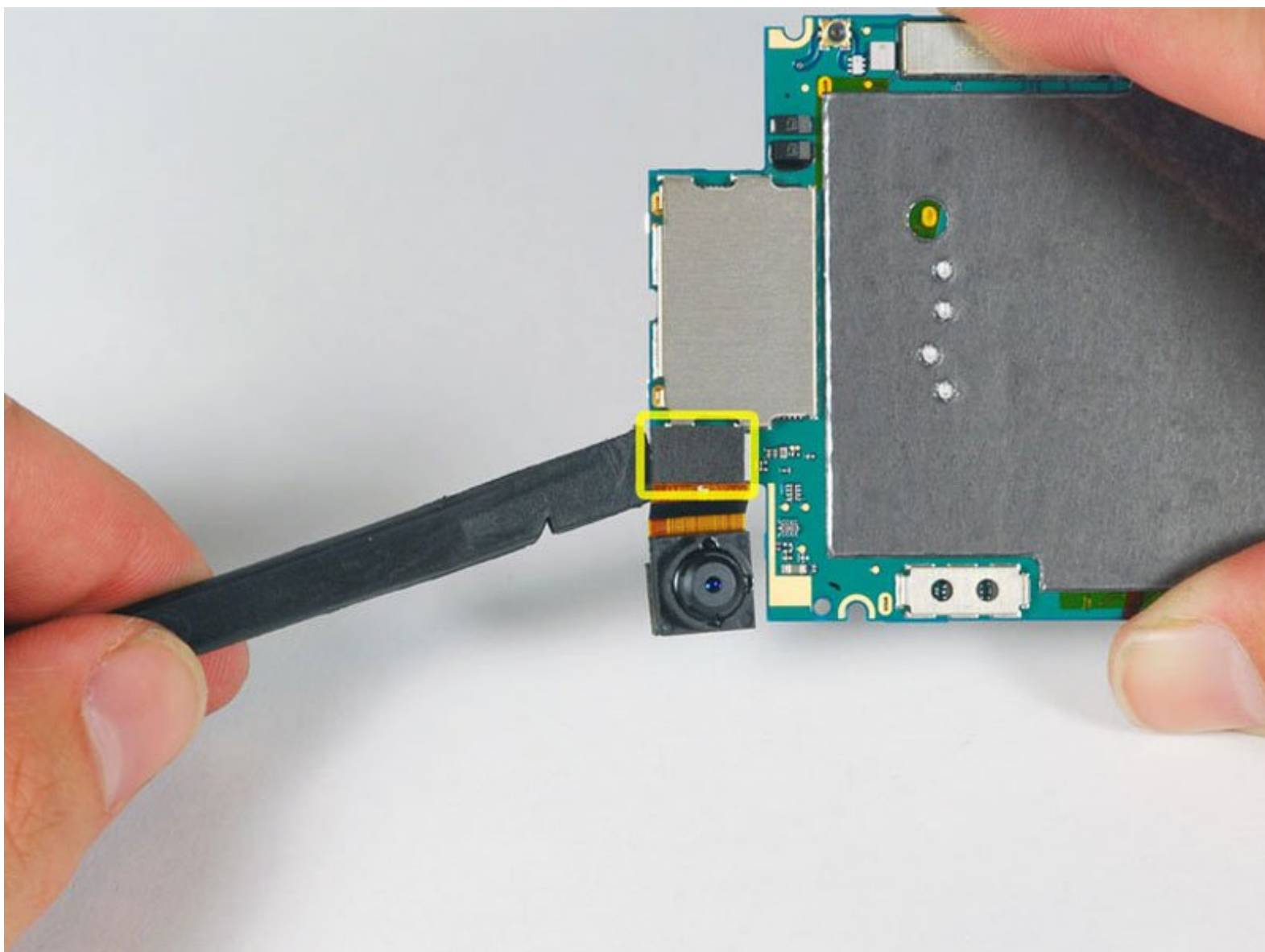




# iPhone 3G Camera Replacement

Replace the camera in an iPhone 3G.

Written By: iRobot



# INTRODUCTION

Want to replace or take out the camera? Here's how.



## TOOLS:

- [Phillips #00 Screwdriver](#) (1)
- [Suction Handle](#) (1)
- [Spudger](#) (1)



## PARTS:

- [iPhone 3G Camera](#) (1)

## Step 1 — Broken Glass



- If your display glass is cracked, keep further breakage contained and prevent bodily harm during your repair by taping the glass.
- Lay overlapping strips of clear packing tape over the iPhone's display until the whole face is covered.
  - ⓘ This will keep glass shards contained and provide structural integrity when prying and lifting the display.

⚠ Wear safety glasses to protect your eyes from any glass shaken free during the repair.

## Step 2 — Camera



- Remove the two Phillips #00 screws from the dock-connector end of the iPhone.

## Step 3



- Remove the metal handle from the suction cup. It's easier and safer to grip the suction cup's base instead of the metal handle.
- ⓘ There is a rubber gasket between the silver front bezel and black display assembly. A bit of force is required in this step to separate the iPhone's display assembly.
- ⚠ Be very careful when opening the iPhone so that the cables under the display are not severed.
- Use a small suction cup near the Home button to gently pull up the bottom portion of the iPhone's display assembly.
- ⓘ If the display assembly is too damaged to allow the suction cup to adhere, tape with a strong adhesive such as duct tape may be used.

## Step 4



- ⓘ The display assembly is still connected to the iPhone by several cables, so don't try to remove it entirely just yet.
- Rotate the display assembly up until it is at an angle of approximately 45 degrees.

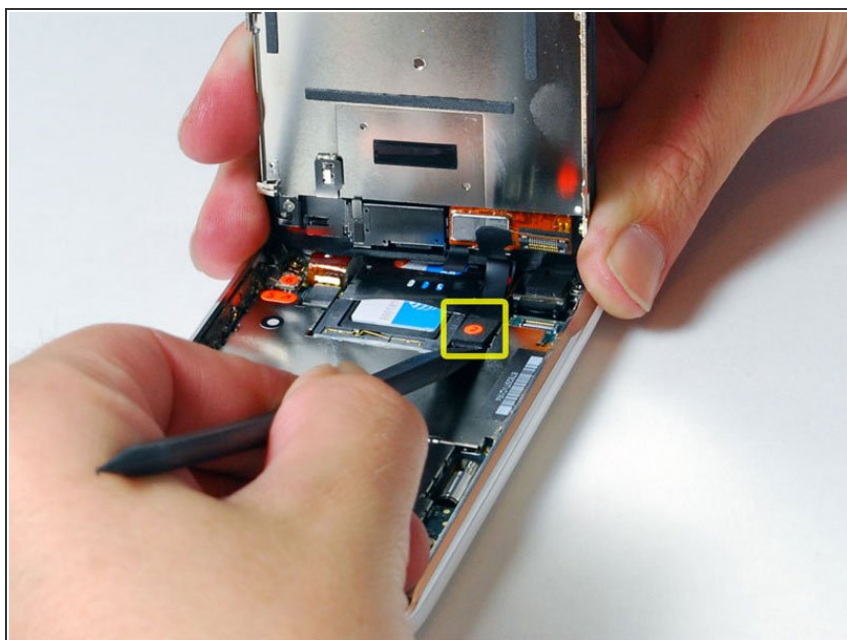


## Step 5



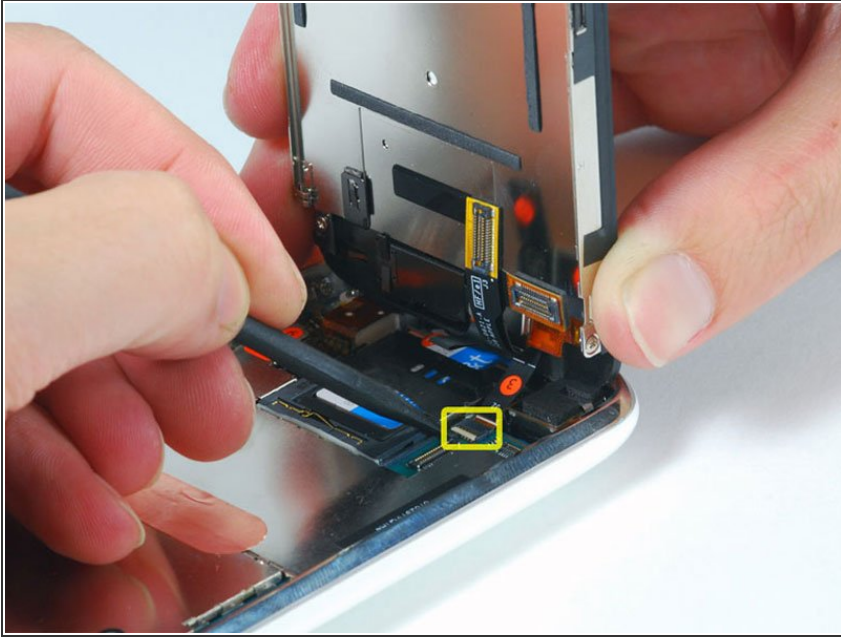
- Continue to hold the display assembly with one hand, and use your other hand and a spudger to disconnect the black ribbon cable labeled "1."

## Step 6



- Rotate the display assembly up until it is roughly vertical. This will allow easier access for disconnecting the remaining cables.
- Use a spudger to disconnect the black ribbon cable labeled "2."

## Step 7



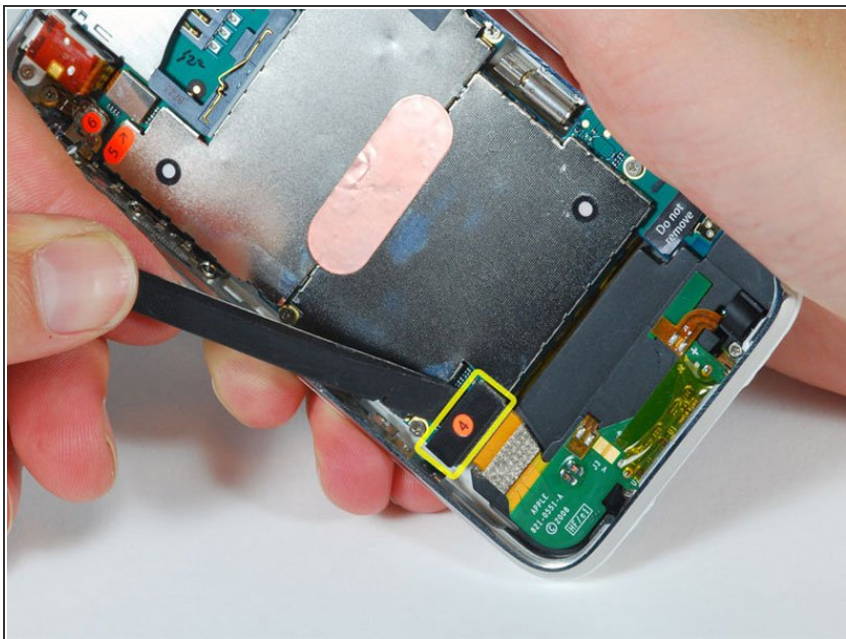
- Ribbon cable "3" is held in place by an FPC style connector. **Unlocking this connector is a must before removing the ribbon cable:** use a plastic spudger to flip up the white plastic tab holding the remaining ribbon cable in place. The white tab will rotate up 90 degrees, releasing the ribbon cable.
- Slide the black ribbon cable out of its connector, and remove the display assembly from the iPhone.

## Step 8



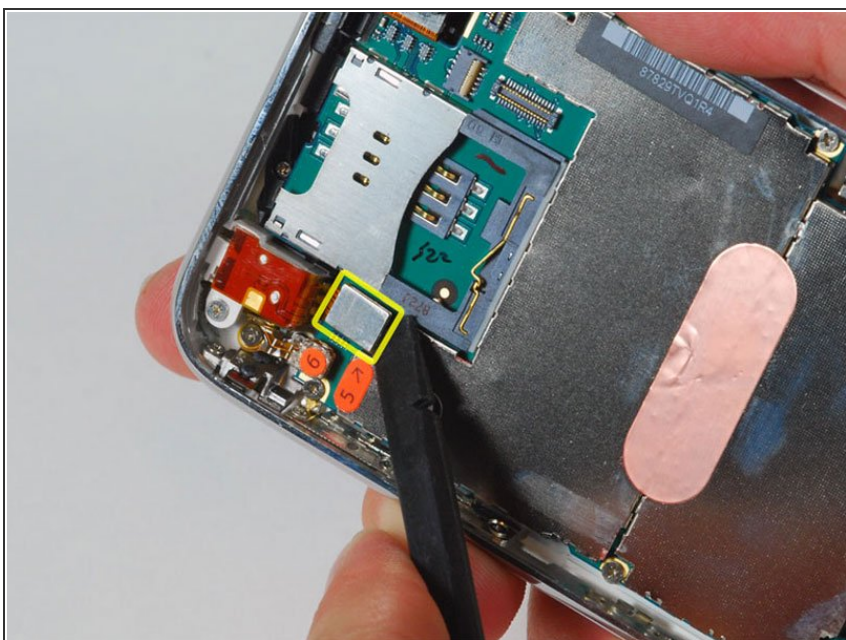
- Insert your SIM eject tool or a paper clip into the hole next to the headphone jack.
- Press down on the tool until the SIM card tray pops out.
- Grasp the SIM card tray and slide it out of the iPhone.

## Step 9



- Use a spudger to disconnect the ribbon cable labeled "4."

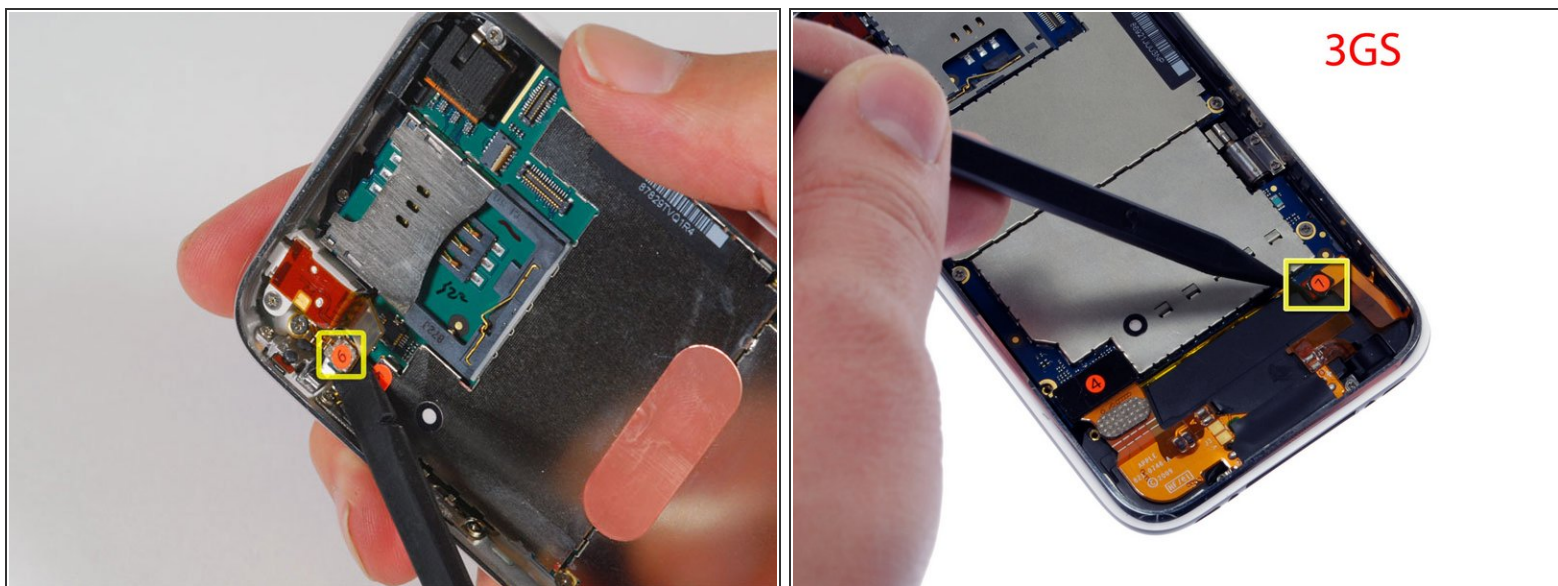
## Step 10



- Use a spudger to disconnect the ribbon cable labeled "5."

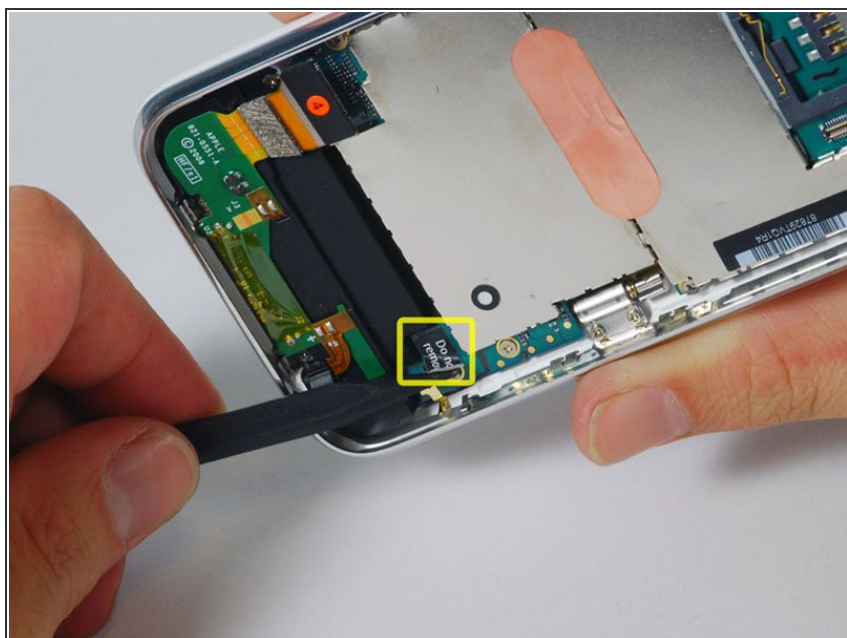


## Step 11



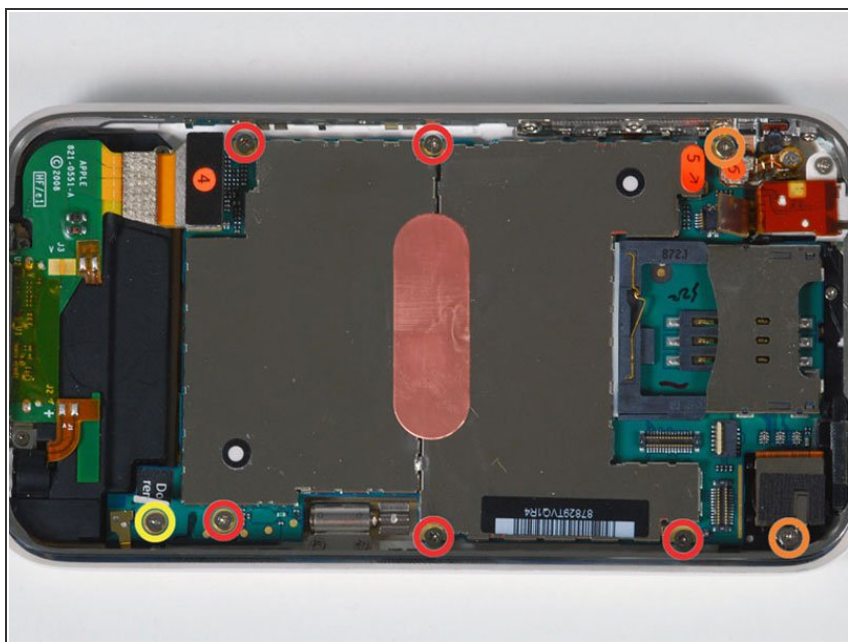
- Use a spudger to disconnect the ribbon cable labeled "6."
- If you have an iPhone 3GS, refer to picture 2 and use a spudger to disconnect the ribbon cable labeled "7."

## Step 12



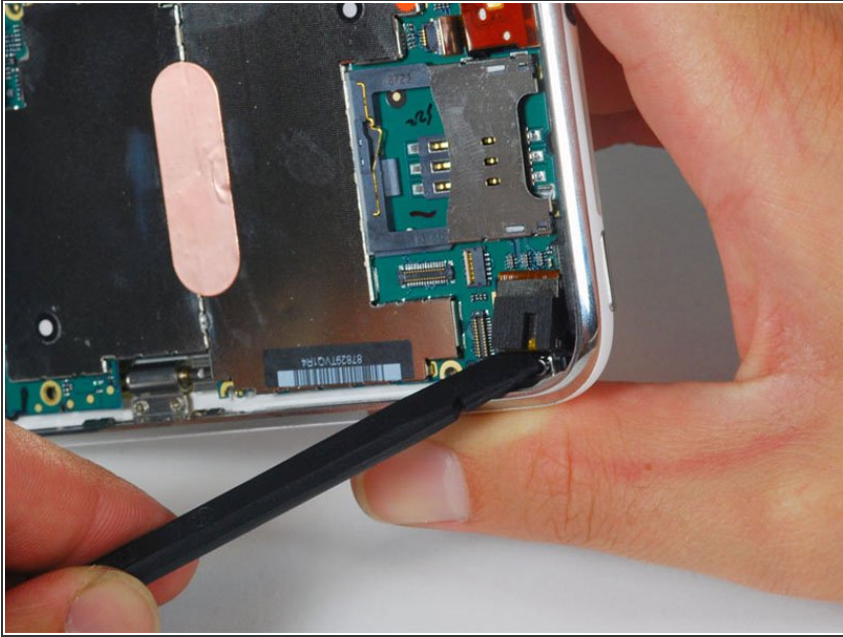
- Carefully peel up the small sticker labeled "Do not remove."

## Step 13



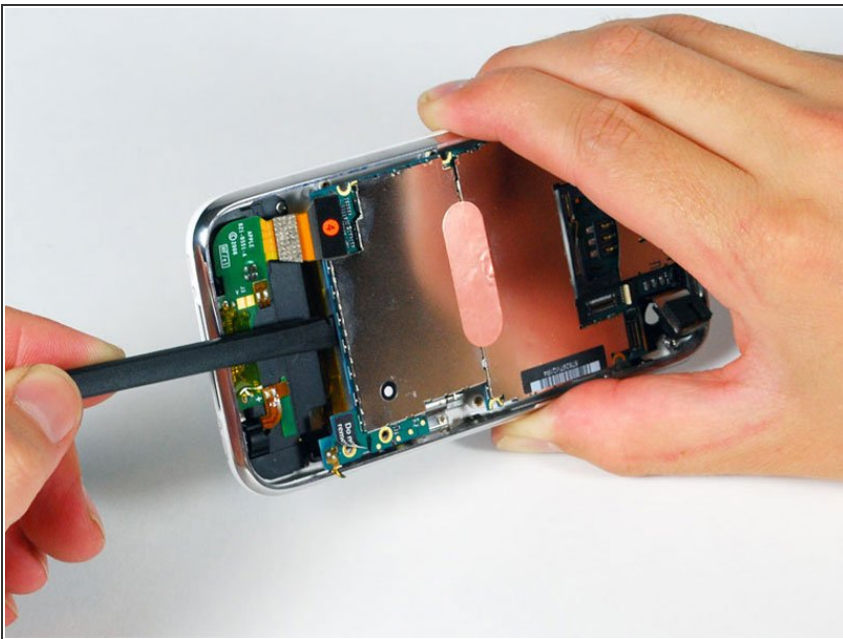
- Remove the following 8 screws:
  - Five 2.3 mm Phillips #00 screws with partial threads securing the logic board to the rear panel.
  - Two 2.3 mm Phillips #00 screws with full threads securing the logic board and camera.
  - One 2.9 mm Phillips #00 screw from beneath the "Do not remove" sticker.

## Step 14



- Use a spudger to gently pry the camera up and out of its housing in the rear panel. The camera cannot be removed entirely yet because it's connected to the bottom of the logic board.

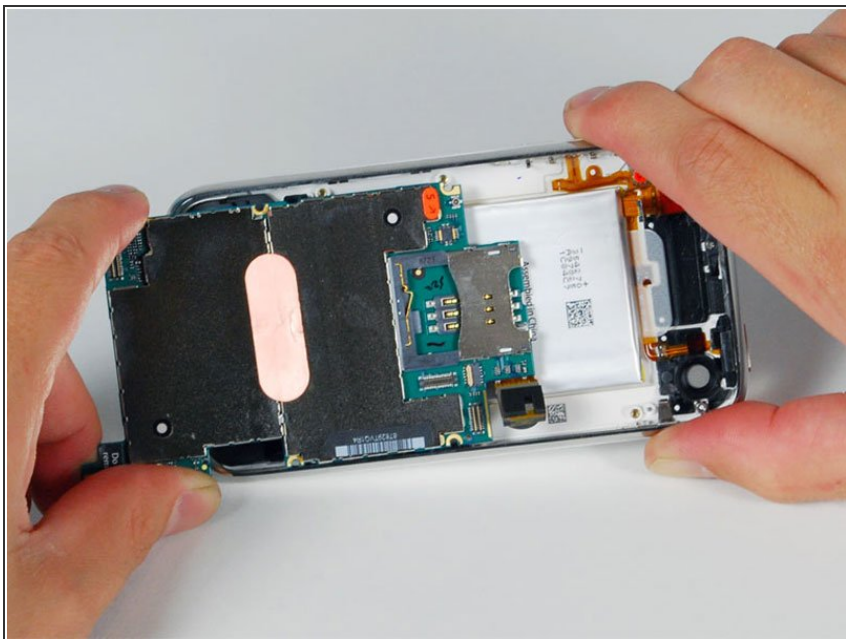
## Step 15



- Use a spudger to gently pry up the end of the logic board closest to the dock connector.
- ⓘ If the board won't lift up, double check to make sure all the screws securing the logic board have been removed.

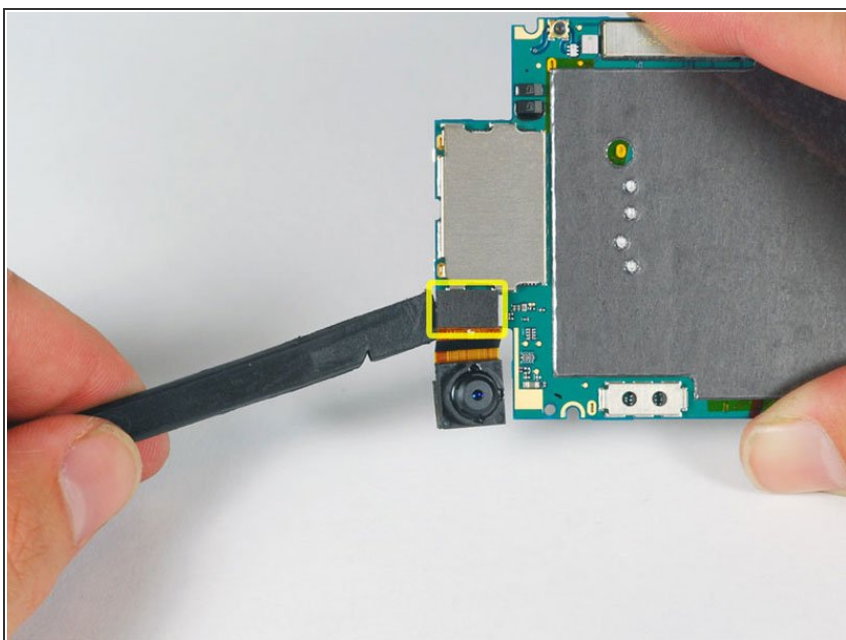


## Step 16



- Slide the logic board towards the dock connector and out of the iPhone.

## Step 17



- Use a spudger to disconnect the camera from the logic board.

To reassemble your device, follow these instructions in reverse order.