



Canon Powershot S200 Motherboard Replacement

How to replace a Canon Powershot S200 motherboard.

Written By: Orlando Zuniga



INTRODUCTION

The motherboard is what contains and connects the principal components of the camera and controls all of its functions. If there is an electronic issue with your camera, for example if auto-focus is no longer functional, there is a high chance that there is an issue with the motherboard. This guide is moderately difficult and will take some time and patience but requires very few tools. It will walk you through all of the steps needed to disassemble the Canon Powershot S200 camera in order to take out the motherboard.

TOOLS:

- [Phillips #00 Screwdriver](#) (1)
-

Step 1 — Battery



- Slide the grey latch to open the battery compartment.

Step 2



- Push and slide the orange retaining clip to the right to remove the battery.

Step 3



- Remove battery from the camera.

Step 4 — Motherboard



- Remove the lanyard.

Step 5



- Position the camera so that the bottom is facing up.
- Remove the two 2.3mm screws beneath the name plate.
- Remove the two 2.8 mm screws surrounding the threaded tripod mount.

Step 6



- Remove the 3.8mm screw from the back face of the camera.

Step 7



- Remove the two 2.3mm screws from the right face of the camera.

Step 8



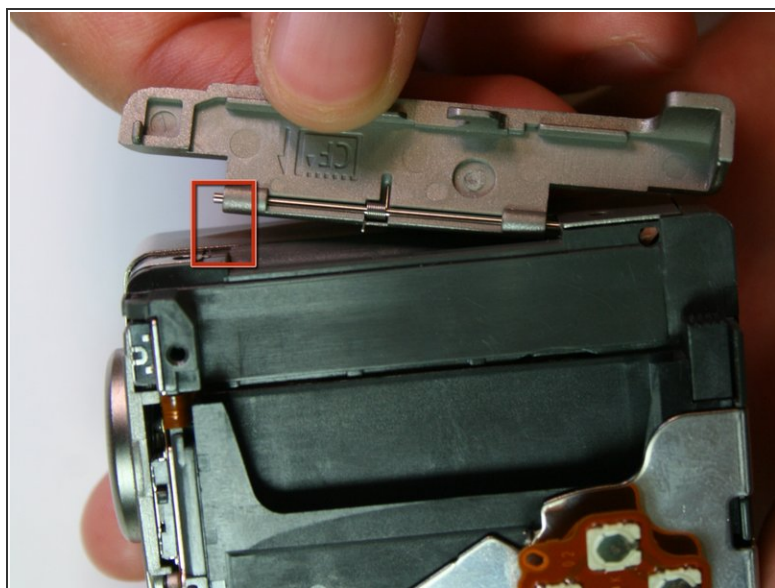
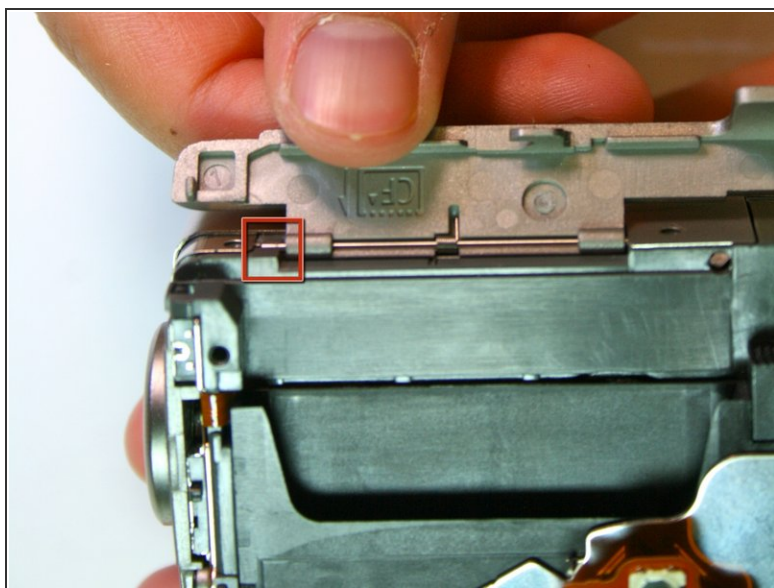
- Remove the two outer 3.2mm screws from the left side of the camera
- Remove the two inner 3.7mm screws from the left side of the camera.

Step 9



- Pull the back face panel away from the front end of the body. This may take some wiggling and force.

Step 10



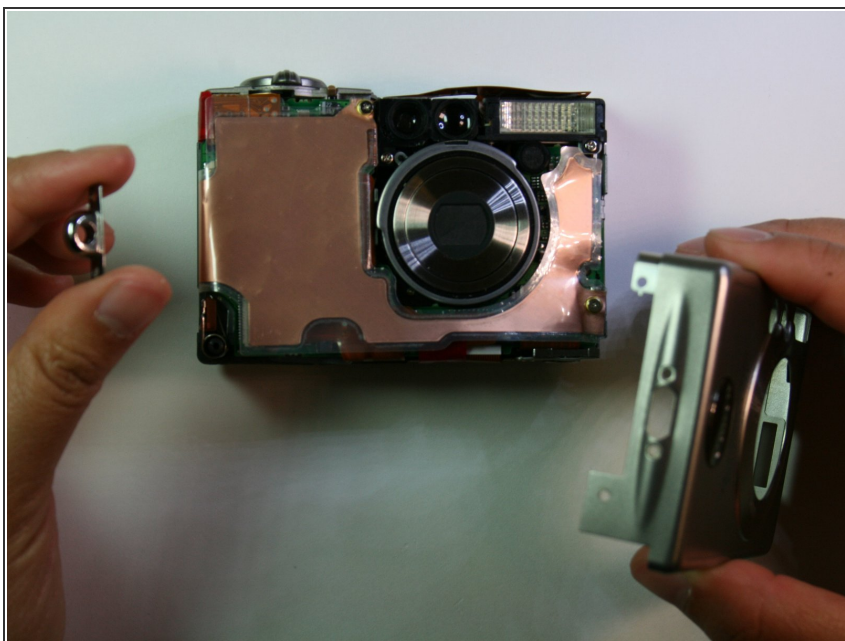
- Remove the CF card door from the left side of the camera body.

Step 11



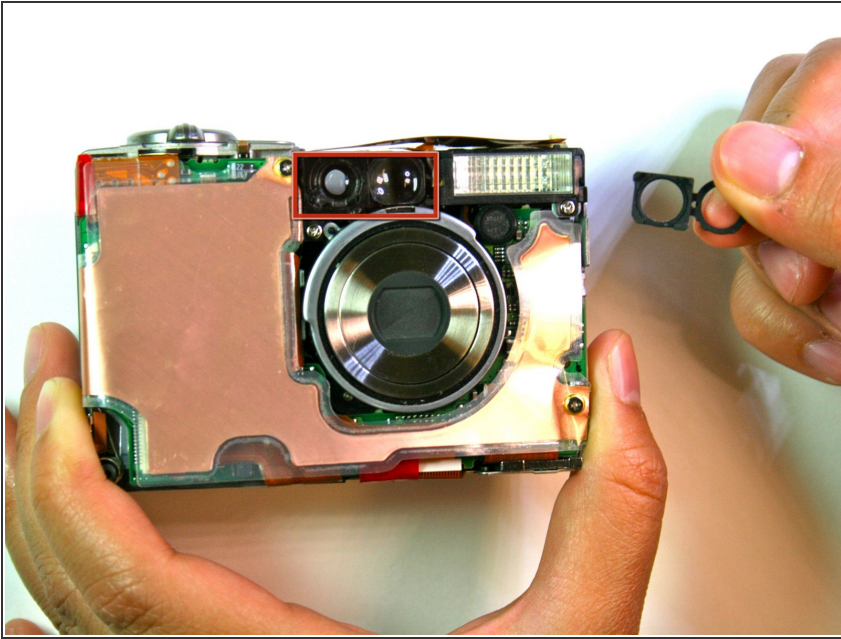
- Slide the rubber digital a/v cap out of place on the front plate.

Step 12



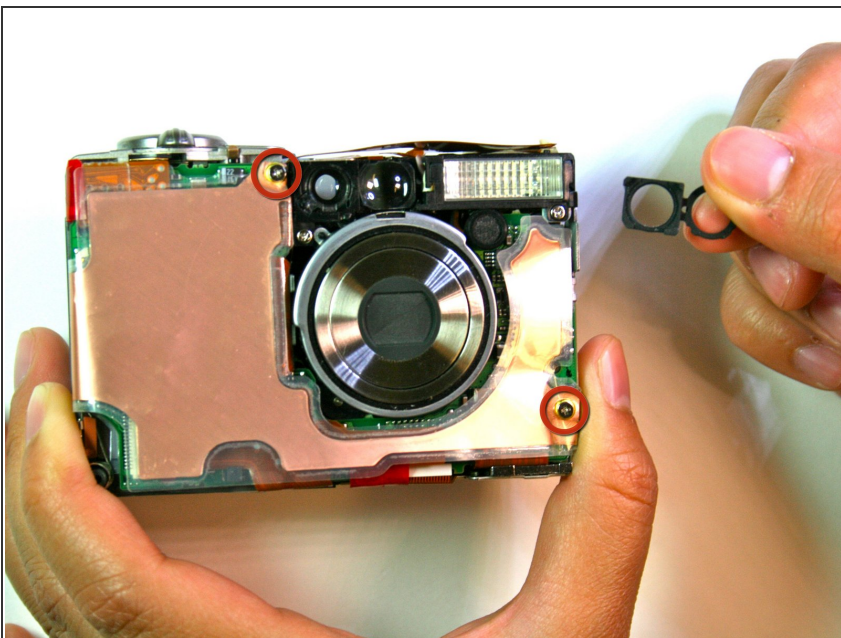
- Remove the front face by sliding it off.

Step 13



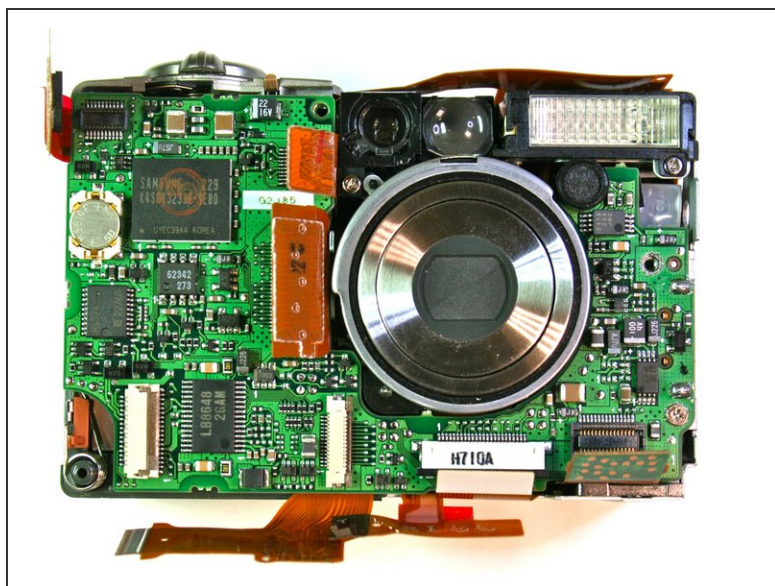
- Remove the rubber seal that covers the right side of the viewfinder.

Step 14



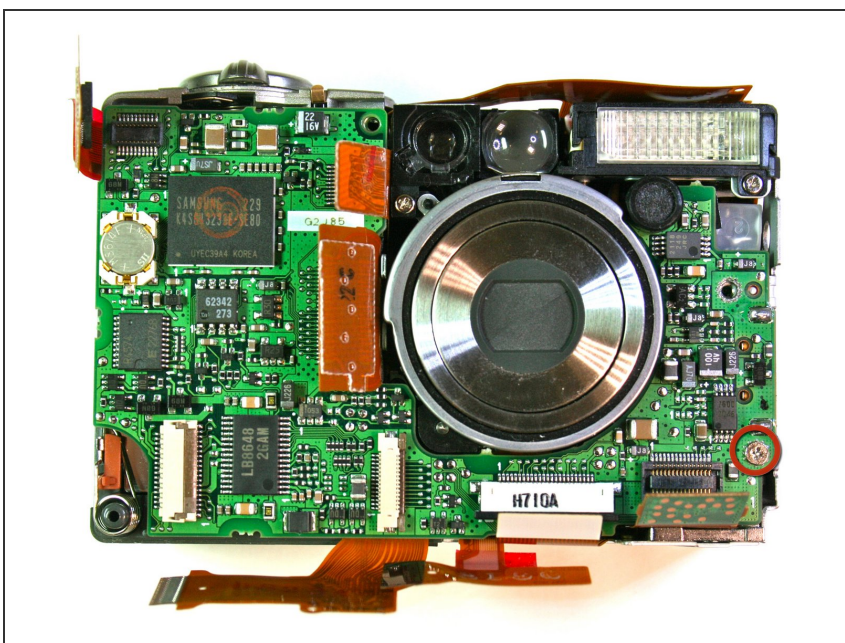
- Remove the two 3.9mm screws that hold the laminated copper sheet.

Step 15



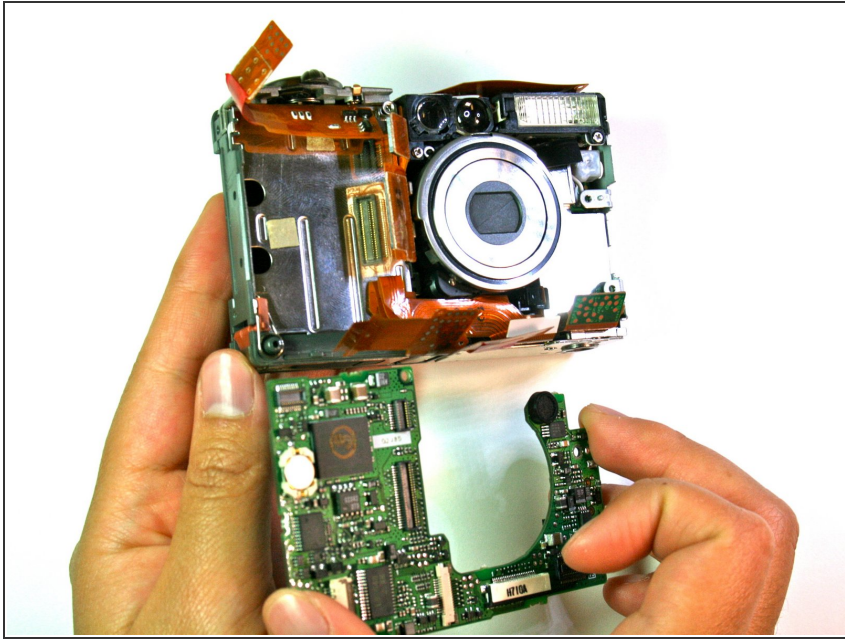
- Remove the wire connections that connect along the bottom of the motherboard.

Step 16



- Remove the single 3.8mm screw that is on the motherboard.

Step 17



- Remove the motherboard from the main frame of the camera body.

To reassemble your device, follow these instructions in reverse order.