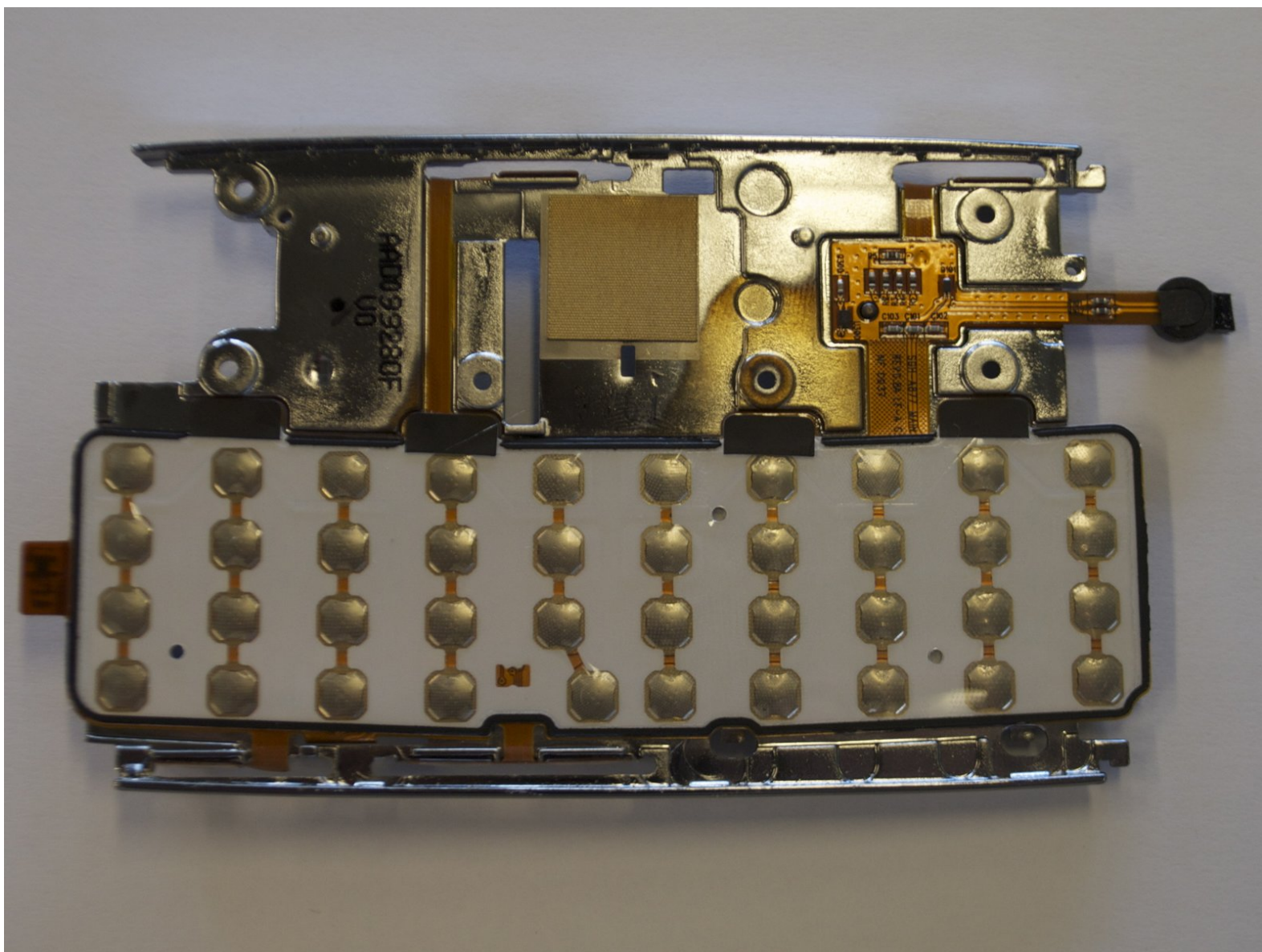




Samsung Impression Keyboard Replacement

How to remove & replace the phone's keyboard.

Written By: Ross McKelvie



INTRODUCTION

How to remove & replace the phone's keyboard.



TOOLS:

- [Phillips #0 Screwdriver](#) (1)
-

Step 1 — Battery



- Orient the phone with the screen facing down.
- Using your thumb, slide the back panel away from the camera to expose the battery.

Step 2



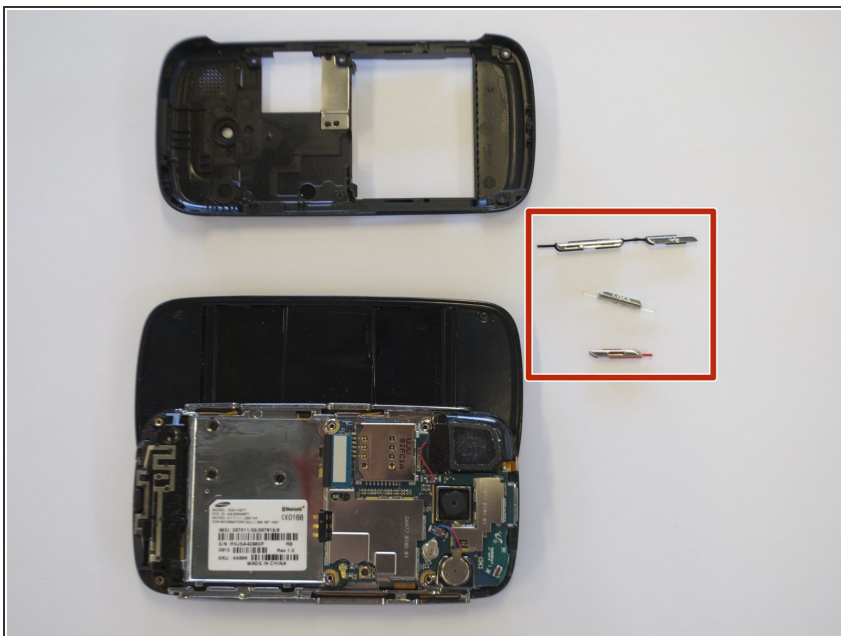
- Insert the tip of the spudger on the left side of the battery, opposite the direction of the white arrow.
- Pry the battery free. It will pivot in the direction of the white arrow.

Step 3 — Back Cover



- Remove the six 3.5 mm screws using a Phillips #000 screwdriver. Make sure to unscrew in a counterclockwise direction.

Step 4



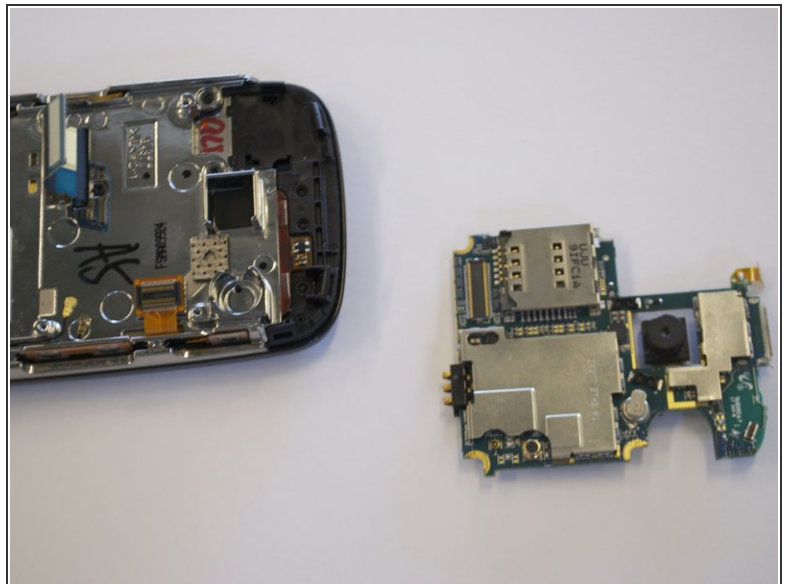
- Remove the back cover by gently prying around the top and bottom edges with the spudger.
 - ⓘ It may help to slide the touchscreen upwards when removing the back panel.
- The side buttons will become loose and will fall out, so put these in a safe place.

Step 5 — Circuit Board



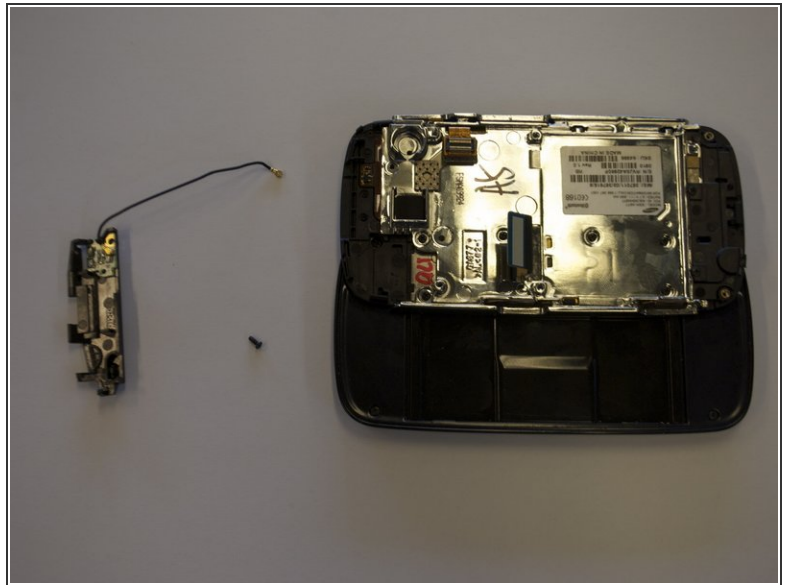
- To free the circuit board, remove the black wire that is holding it down.
- ⓘ You can remove the wire by gently prying up the gold terminator that is attached to the green circuit board. A gentle tug is all it should take.

Step 6



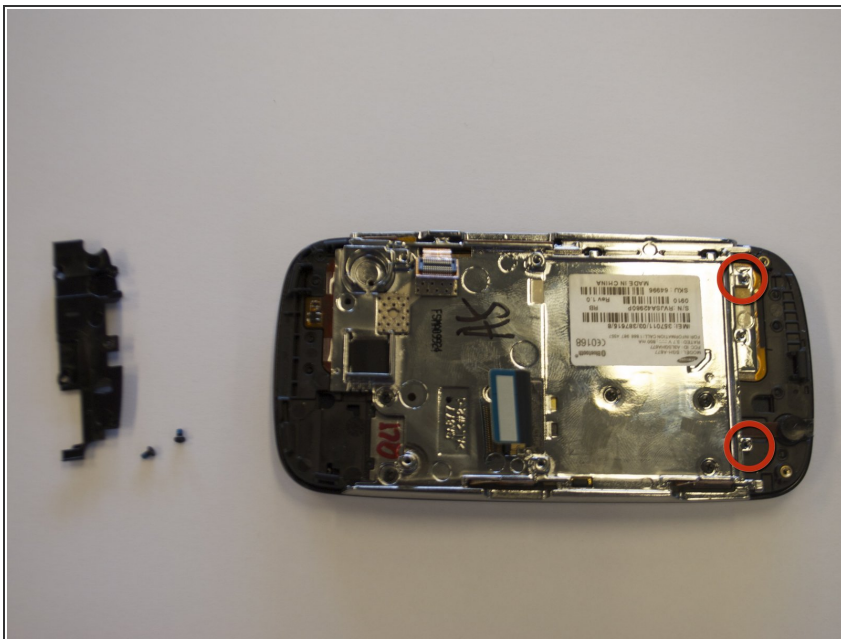
- The circuit board will still be held on by a blue and black ribbon. Remove the entire circuit board by gently tugging the ribbon upwards.

Step 7 — Antenna



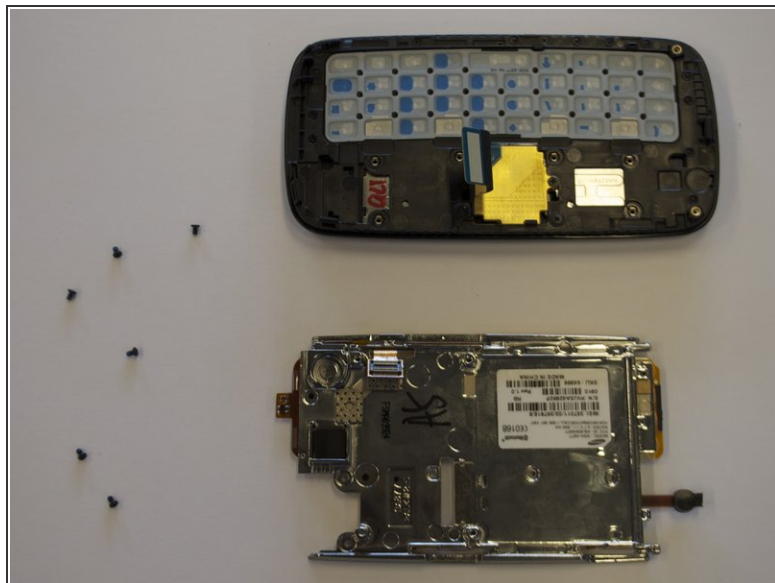
- Remove the 3.9mm screw holding the bottom black piece (antenna assembly) into place.
- The antenna assembly will snap off.

Step 8 — Keyboard



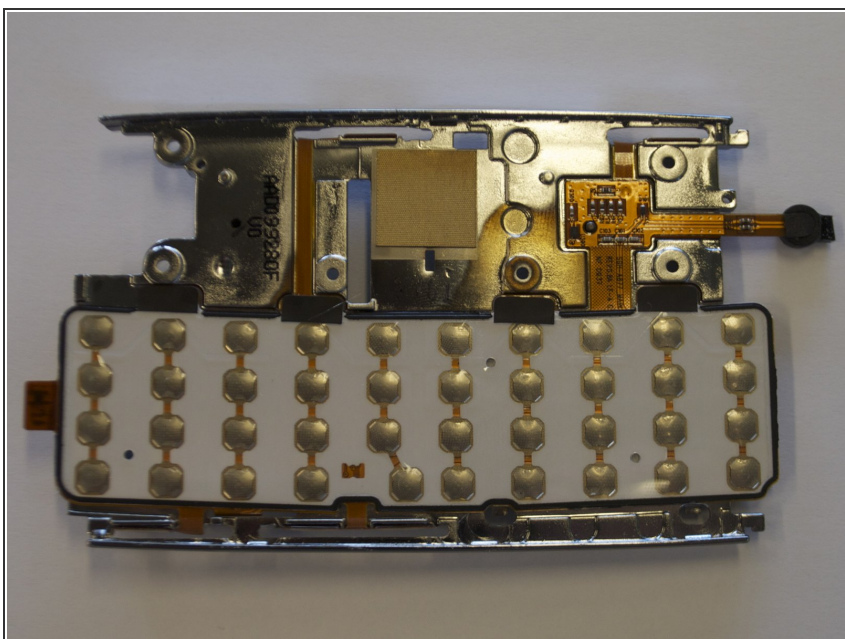
- Remove the two base screws along the edge of the silver piece, where you just removed the black end piece.
 - The screws are 2.7mm in length.
- The bottom black end cap will snap out.

Step 9



- Remove 6 screws holding the silver plate on.
 - 2.7mm in length
- The keys will peel right out of the screen side of the phone.

Step 10



- The silver piece you are left with is the physical keyboard assembly.

To reassemble your device, follow these instructions in reverse order.