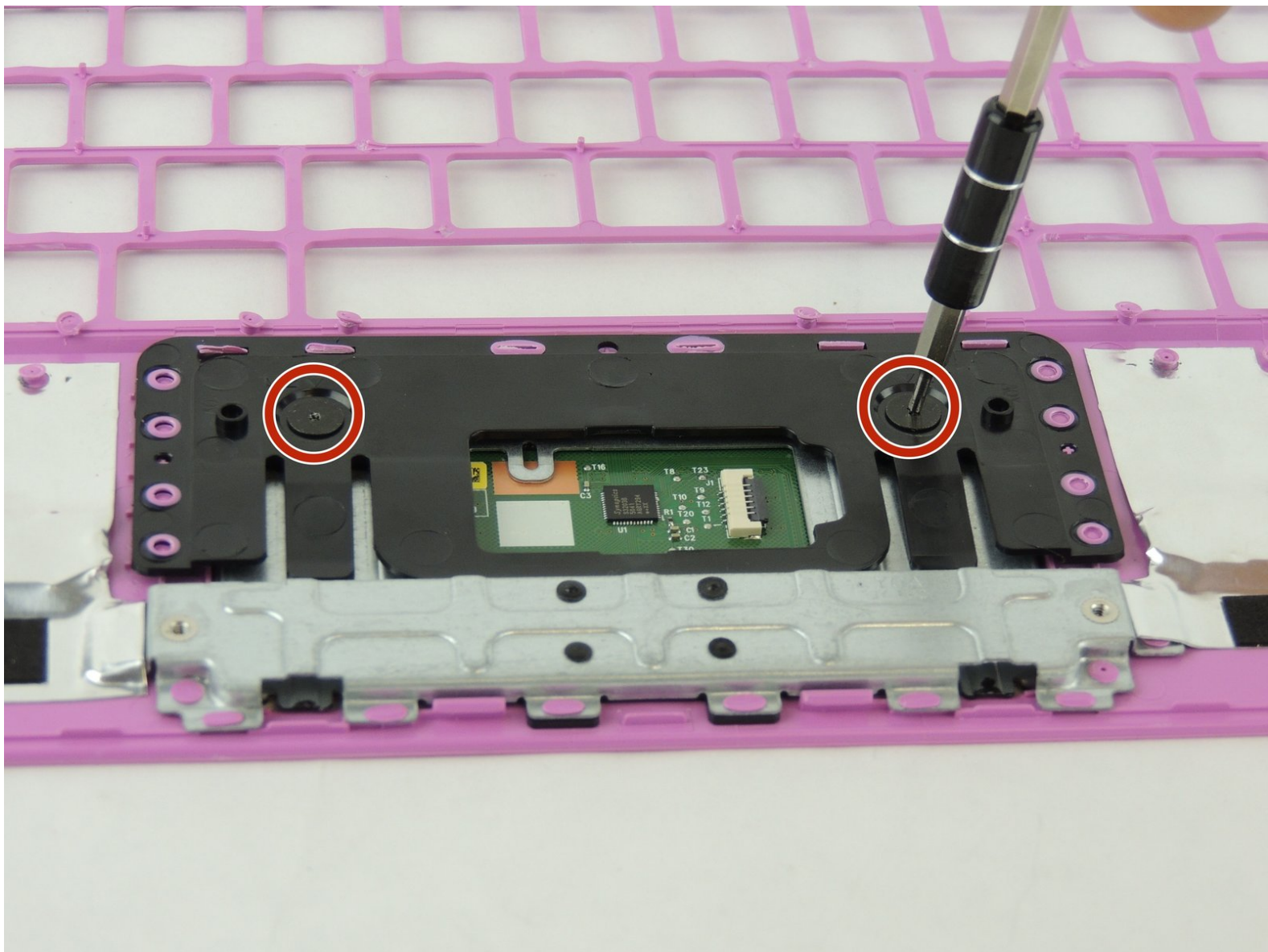




HP Stream 11-d020nr Trackpad Replacement

Replace a faulty or damaged ClickPad in an HP Stream 11-d020nr laptop. This should take you about 5-10 minutes.

Written By: Spenser Mason



INTRODUCTION

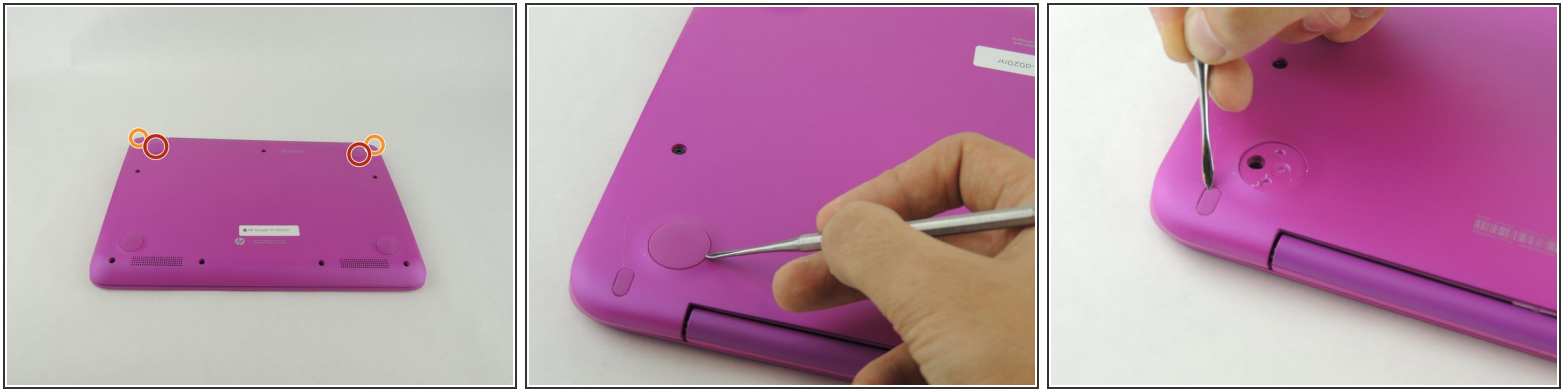
Sometimes the ClickPad of the HP Stream 11-d020nr may stop working effectively. This could be caused by either a hardware or software issue. Either way, this replacement is pretty straightforward. To avoid potential electrical hazards, be sure that the laptop is unplugged and shut down before beginning your repair.



TOOLS:

- [Metal Spudger Set](#) (1)
 - [Spudger](#) (1)
 - [iFixit Opening Tools](#) (1)
 - [Phillips #00 Screwdriver](#) (1)
-

Step 1 — Lower Case



i Before disassembly, unplug and power off the Stream 11.

- Pry off the two elliptical rubber inserts (one in each corner).
- Pry off the two circular rubber inserts below the removed elliptical inserts (one in each corner).

Step 2



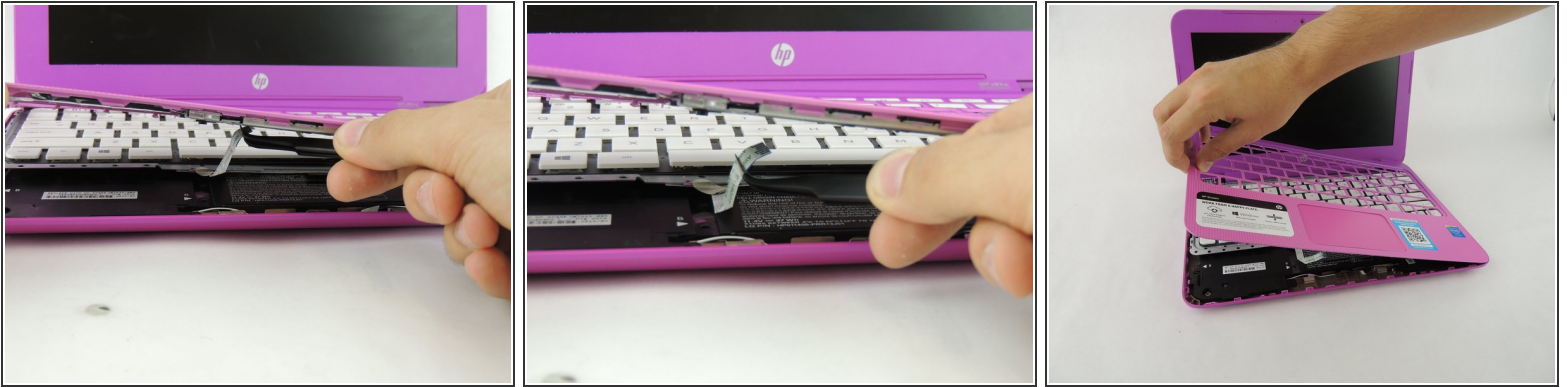
- Remove the eleven 5.6 mm Phillips #00 screws.

Step 3




- Turn the computer upright and lift the screen.
- Carefully use a spudger to pry the plastic keyboard cover from the base.
 - ⚠ When using the metal spudger, be careful not to press into the components underneath the keyboard cover. If possible, use a standard spudger or plastic opening tool to remove the keyboard cover.
- Work the spudger around the cover to release the clips attaching the cover to the base.
- ⓘ Be patient when removing the cover, as there are many clips and it may take some time.

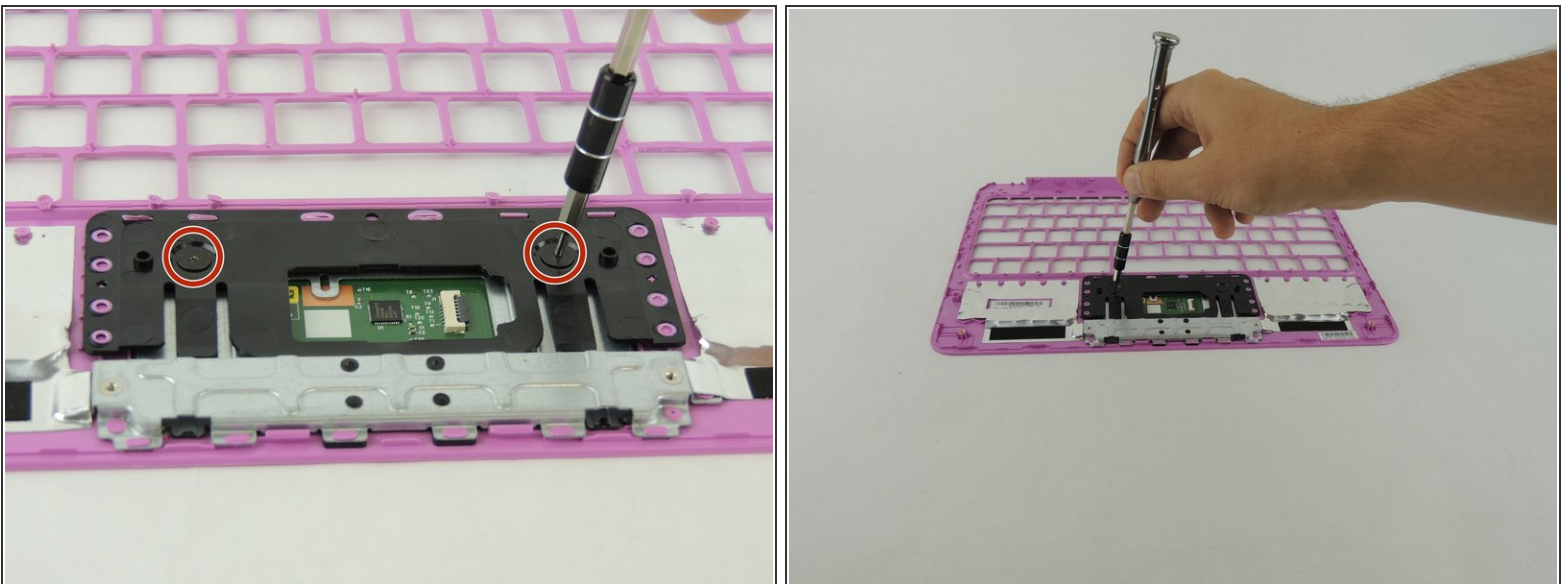
Step 4



- Disconnect the cable connecting the ClickPad to the base.
- Remove the plastic keyboard cover.

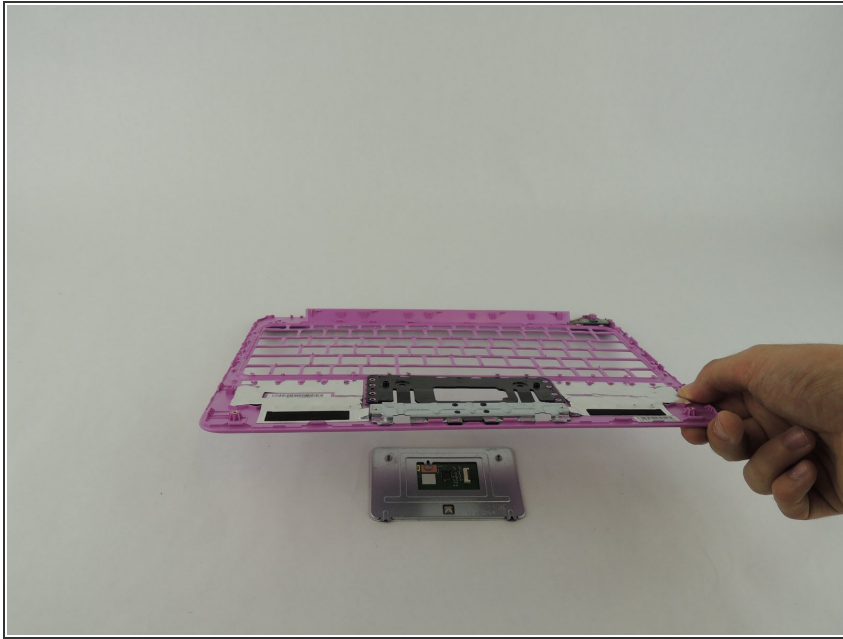
 The cover is attached to the ClickPad by a cable. Be careful not to lift the cover too far so you do not damage this cable.

Step 5 — Trackpad



- On the back of the plastic keyboard cover, remove the two 2 mm Phillips #000 screws.

Step 6



- Lift up the plastic cover to release the ClickPad.

To reassemble your computer, follow these instructions in reverse order.