



Bose Soundlink III Battery Replacement

Replace the battery of your Bose Soundlink III.

Written By: Dakota Sanders



INTRODUCTION

If your SoundLink III exhibits significantly decreased battery life or no longer takes a charge, you may need a new battery. In this guide, you will learn how to open up your Bose Soundlink III and replace the battery.



TOOLS:

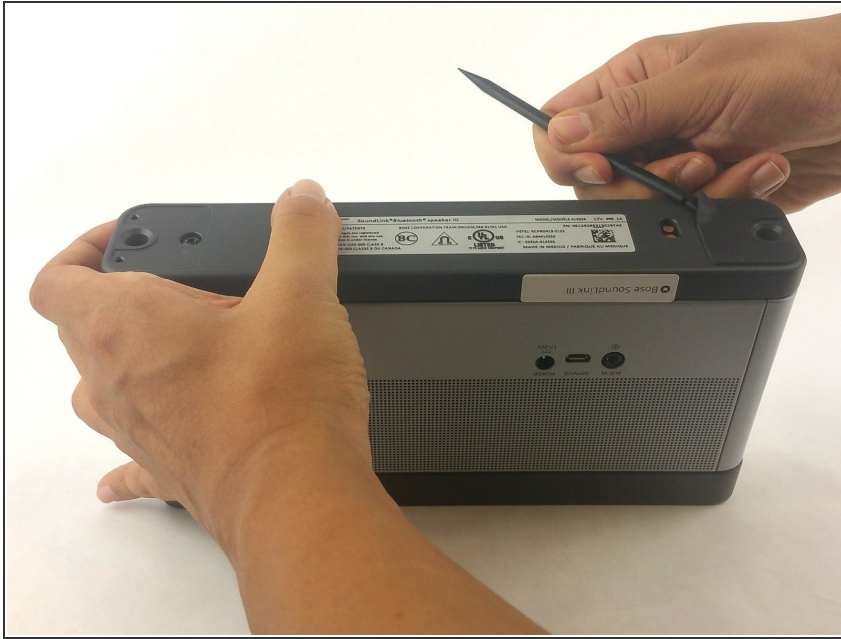
- [Metal Spudger](#) (1)
- [Spudger](#) (1)
- [Phillips #2 Screwdriver](#) (1)



PARTS:

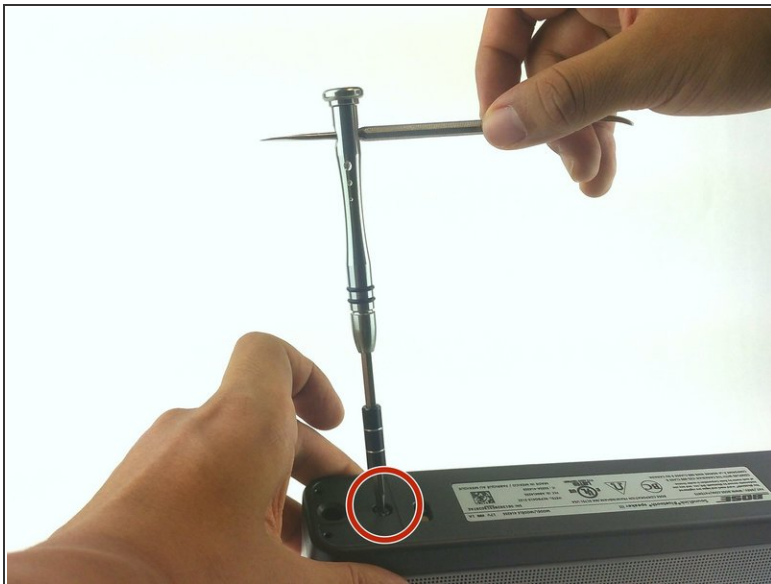
- [Bose Soundlink, Soundlink II, Soundlink III, SoundTouch 20 Battery](#) (1)

Step 1 — Battery



- Use a spudger to pry the rubber pads off of the bottom panel of the SoundLink.
- ★ The rubber pads should have enough adhesive to stick when you reassemble them at the end. If not, however, you may need your own adhesive.

Step 2



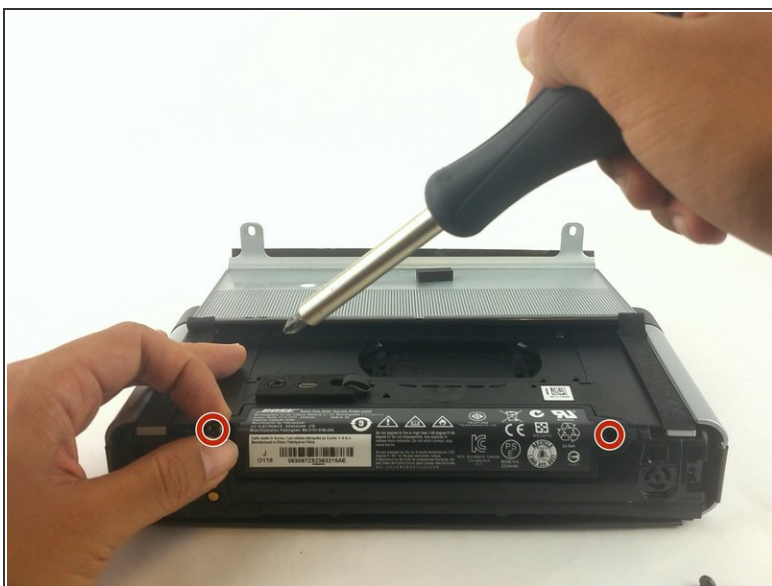
- Remove the two 12.5 mm screws using a Phillips #2 screwdriver.
 - ⓘ These screws may be difficult to remove. If necessary, use a lever for extra torque.
- Remove the bottom panel.

Step 3



- Flip the rear panel back to allow access to the SoundLink's battery.

Step 4



- Remove the two 12.5 mm Phillips #2 screws from the sides of the battery.

To reassemble your device, follow these instructions in reverse order.