



# Nikon Coolpix S33 Motherboard Replacement

This guide will show you how to replace the motherboard.

Written By: Maria Frias



## INTRODUCTION

If your camera won't respond to any efforts to turn on, you may need to replace the motherboard in the camera. This guide will walk you through how to replace the motherboard so that you can have a working camera again.



### TOOLS:

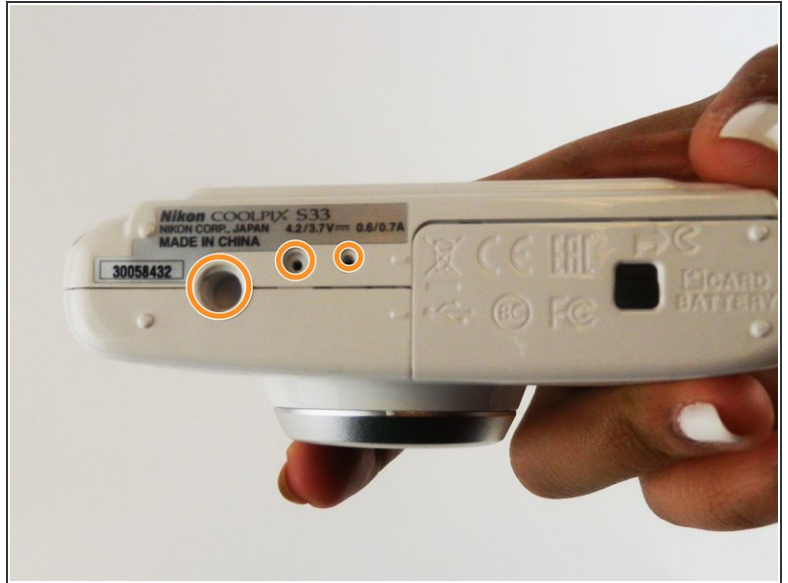
- [Heavy-Duty Spudger](#) (1)
- [T5 Torx Screwdriver](#) (1)
- [JIS Driver Set](#) (1)
- [15" Phillips Screw](#) (1)



### PARTS:

- [Nikon D3000 Motherboard](#) (1)

## Step 1 — Back Cover



 Remove battery before initiating this step to avoid the possibility of electric shock.

- Remove all four T5 Torx screws from the exterior of the camera.
- Remove all three T5 Torx screws located at the bottom of the camera next to the battery compartment.

## Step 2



- Remove the two screws located above the HDMI and USB logos that are inside the camera's battery compartment using a JIS000 screwdriver.




### Step 3



- Using a plastic opening tool, gently remove the back cover from the camera.

### Step 4 — LCD



 Be sure to have followed the steps to remove the Back Cover of your camera before beginning to replace

the LCD Screen. This guide will cover just the replacement of the LCD Screen.

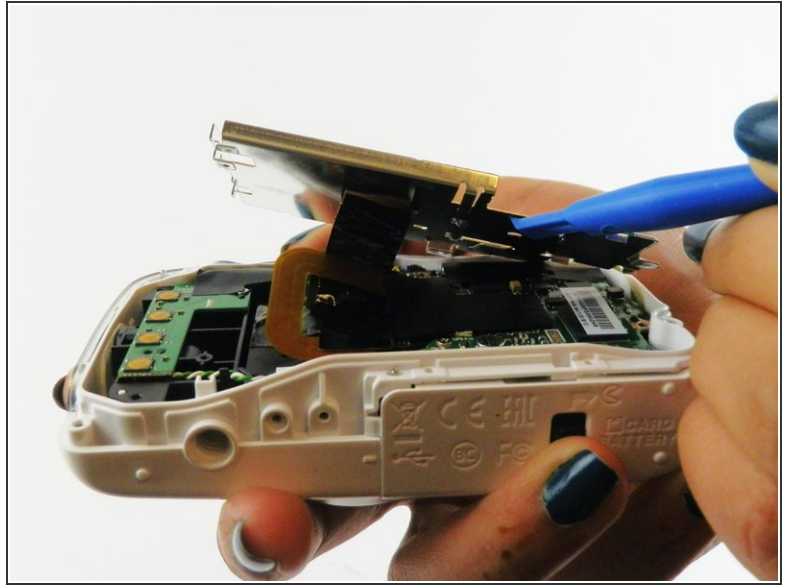
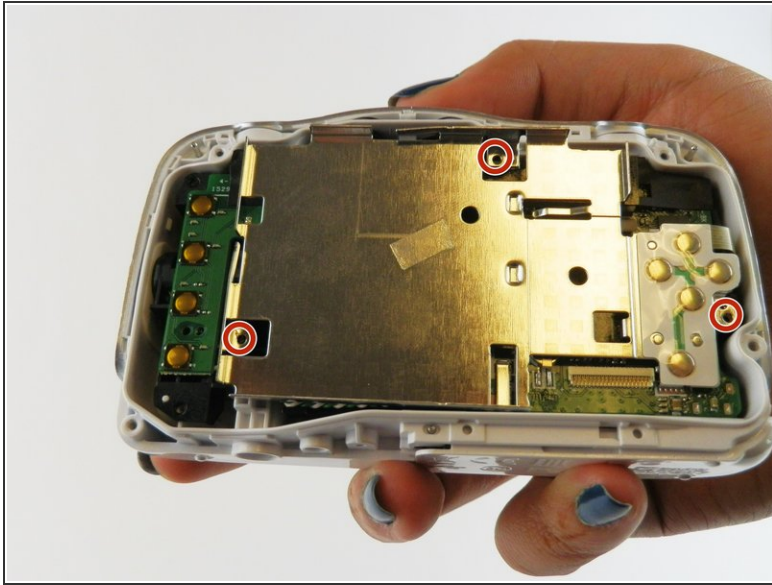
- Using a plastic opening tool, pry the LCD screen out of its slot inside of the camera.

## Step 5



- Before pulling the LCD Screen out of the camera, you will need to disconnect the ribbon connector that attaches the screen to the camera.
- Gently pull the ribbon connector out of its slot. You should be able to remove it without the need of any tools.

## Step 6 — Motherboard



- Remove all three 15" Torx screws. Gently pry off the LCD holder using a plastic opening tool.
- Peel off the connecting tape under the LCD holder to disconnect it completely.

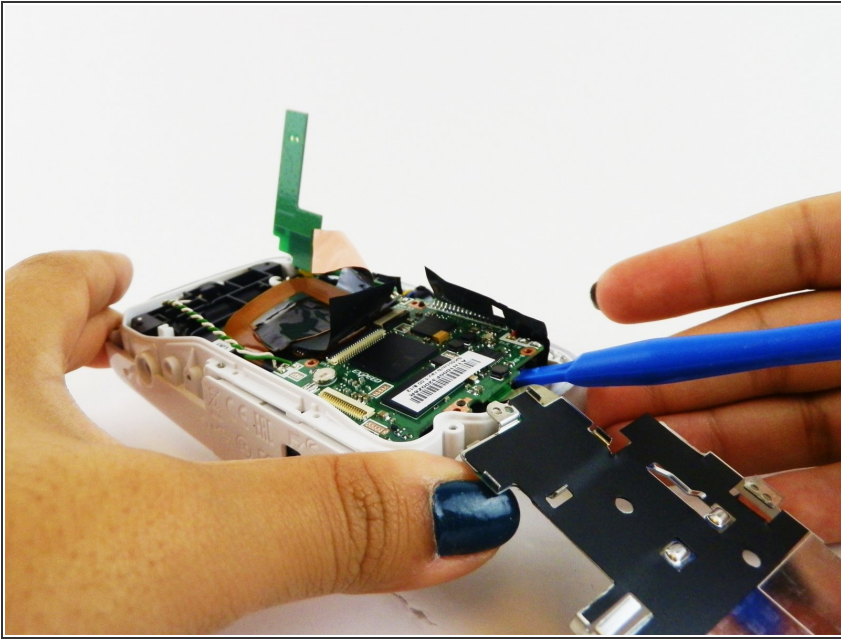
## Step 7



- Peel back black electrical tape and disconnect the ribbon connectors from the mother board.
- Disconnect the wires from the motherboard.
- Take out the two 15" Phillips screws, as shown in the image, using a Phillips screwdriver.



## Step 8



- Gently pry off the motherboard using a plastic opening tool.

To reassemble your device, follow these instructions in reverse order.