



ArmorAll AA255 Switch Replacement

Power switch replacement for the ArmorAll AA255.

Written By: Renzo La Rosa



INTRODUCTION

Make sure the cord is unplugged.



TOOLS:

- [Long shaft Phillips #2 Screwdriver](#) (1)
 - [T20 Torx Screwdriver](#) (1)
 - [iFixit Opening Tools](#) (1)
 - [Spudger](#) (1)
-

Step 1 — Lower Motor Housing



- Remove the orange main housing unit from the vacuum bucket by pulling outward on the handle tabs while lifting upward as shown.

Step 2



- Remove the five 15mm PH2 screws.

Step 3



- Remove the 15 mm T20 screw. This screw is located nearest the power cord.

Step 4



- Gently separate the upper and lower sections of the main housing.

Step 5 — Switch



- Using a PH2 screw head, unscrew the two 15mm screws as shown.

Step 6



- Pull the black handle.
- Using a PH2 screwdriver, unscrew the single 12mm screw shown.

Step 7



- Use the blue opening tool to open up the black handle.

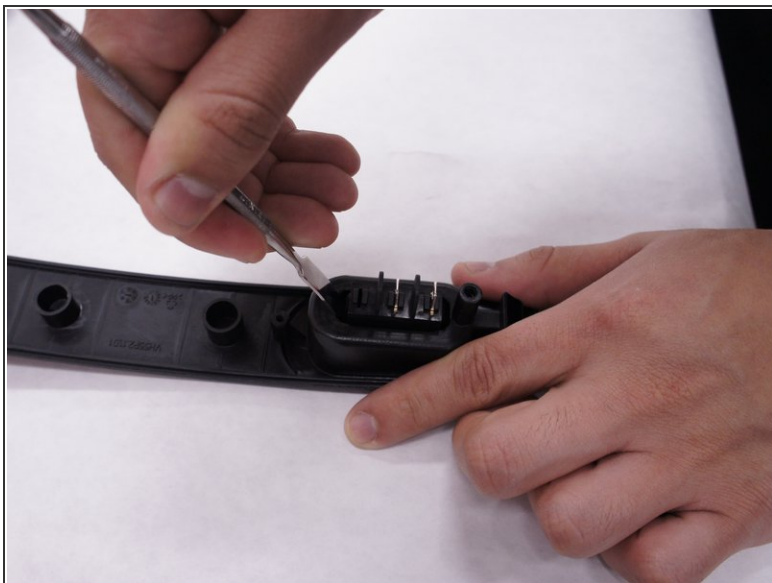
Step 8



- Using your fingers, gently take out the black cords.

 Careful to not break the black cords.

Step 9



- Using the spudger, take out the switch. Do this by pushing the spudger against the switch on both sides as shown and then pull the switch out.

Step 10



- Replace the switch shown.

To reassemble your device, follow these instructions in reverse order.

This document was generated on 2020-11-20 01:11:45 AM (MST).

