



Philips Norelco 5801XL Battery Replacement

Replace a dead or damaged battery in your Philips Norelco 5801XL.

Written By: Ben Gibbs



INTRODUCTION

Use this guide to replace the rechargeable battery in the Philips Norelco 5801XL. The steps should be followed exactly as listed in the guide. Some soldering skills are required. Be sure to handle with care. For help with soldering: [click here](#).



TOOLS:

- [iFixit Opening Tools](#) (1)
- [T8 Torx Screwdriver](#) (1)
- [Soldering Iron](#) (1)



PARTS:

- [New Battery pack](#) (1)

Step 1 — Battery



- Using a T8 torx screwdriver, remove both 2mm T8 screws.

Step 2



- Using a plastic opening tool, separate the front housing from the back housing.
- Carefully pull the housing apart.

Step 3



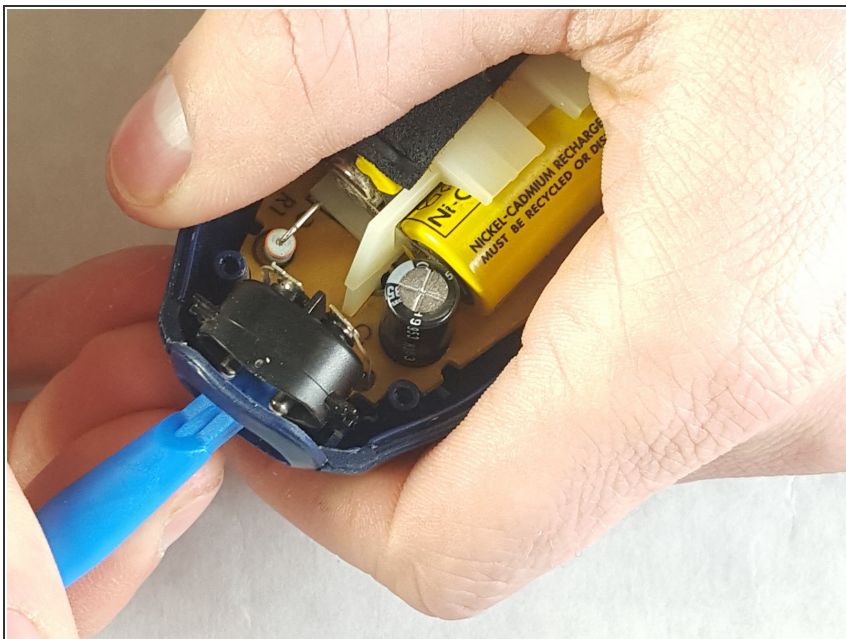
- Remove the plastic bracket using a plastic opening tool.
- Pry from the inside of the bracket towards the outside of the housing to remove it.

Step 4



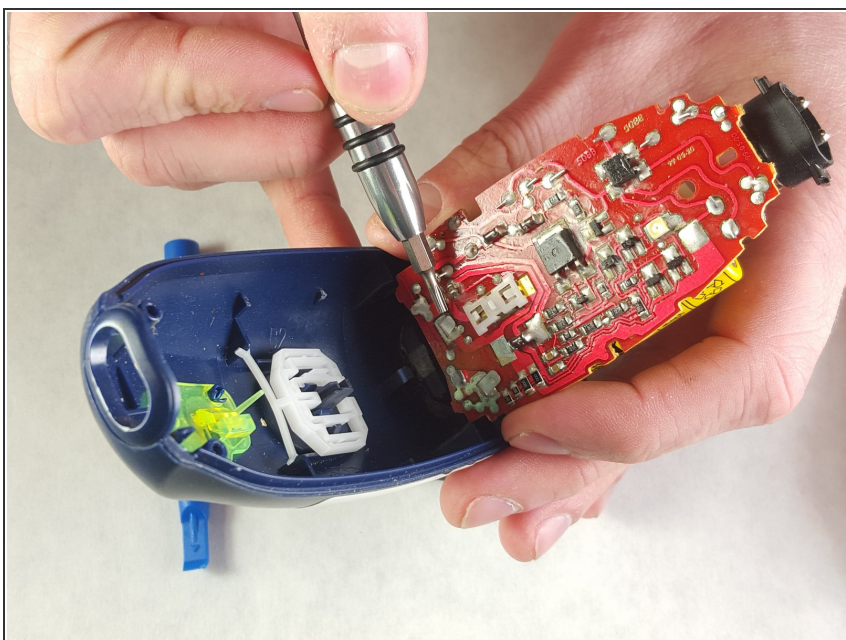
- Remove the two T8 2mm Philips screws holding onto the bracket over the charge port.
- Remove the bracket. It will pull straight out.

Step 5



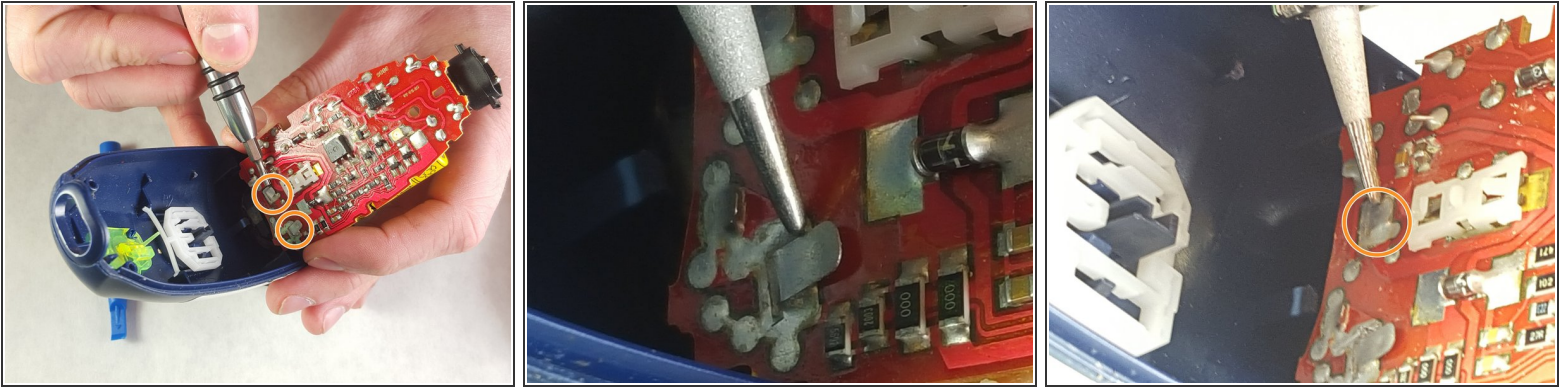
- Push in the charge port using the plastic opening tool.

Step 6



- Lift the circuit board upwards and fold it towards the head of the razor.
- ⚠ Do not break the contacts connecting the board to the motor.

Step 7



- Desolder the contacts where the battery connects to the circuit board.
- Straighten the battery contacts and pull them through the opposite side of the circuit board.

To reassemble your device, follow these instructions in reverse order.