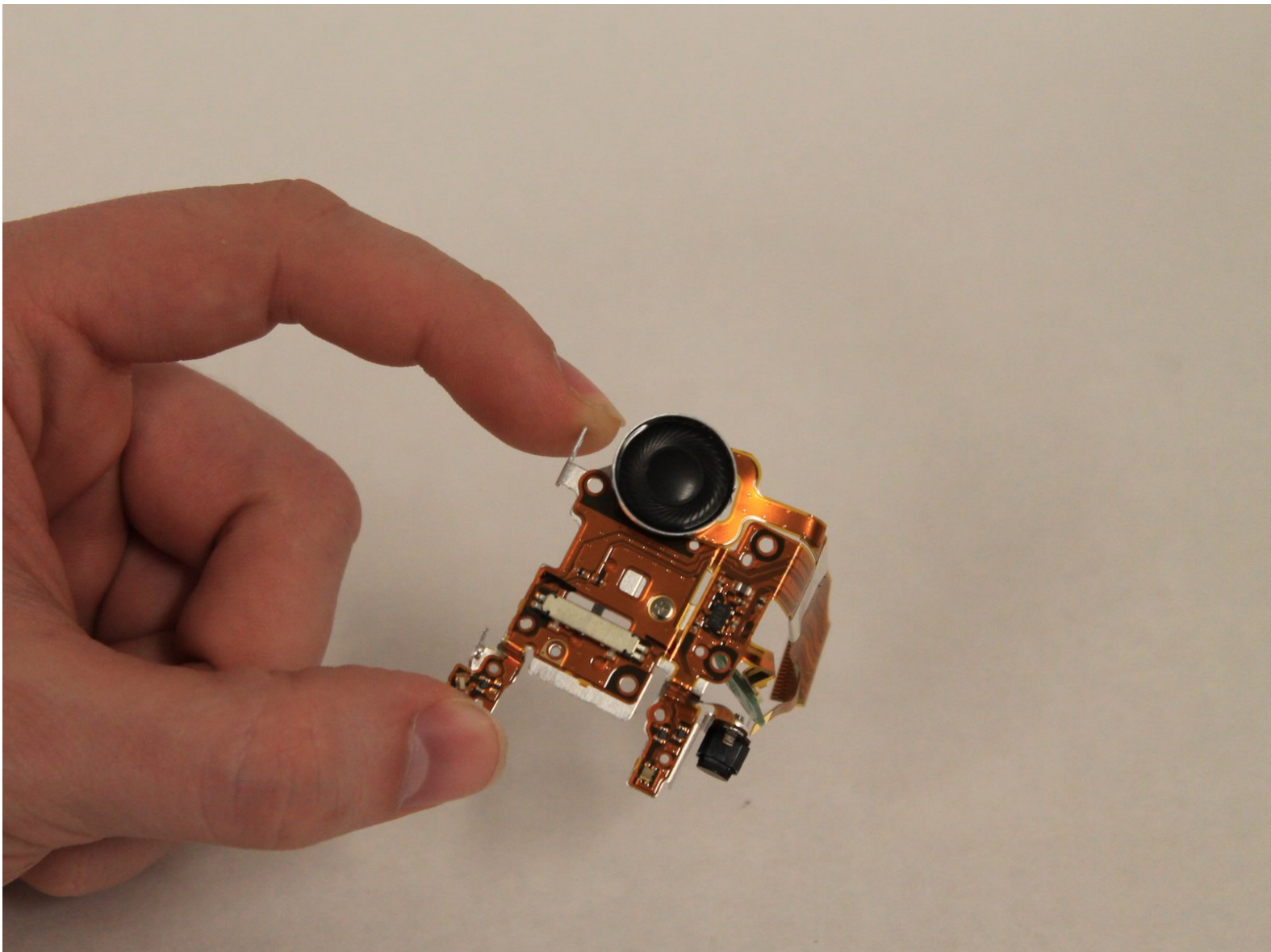




Canon Vixia HF R500 Speaker Replacement

This guide will help you replace your broken or damaged speaker in your device.

Written By: Deion Woods



INTRODUCTION

This repair is for when the speaker on your camera has either gone out or the audio is unrecognizable. There are no hazards to this repair as long as the battery and charger are not plugged into the camcorder. This repair to the device will be beneficial when recording a video clip with sound and want to play it back.



TOOLS:

- [Magnetic Project Mat](#) (1)
 - [Phillips #000 Screwdriver](#) (1)
 - [Spudger](#) (1)
-

Step 1 — Battery



- Hold on to the battery.

Step 2




- On the bottom of the battery hold the battery release switch.

Step 3



- Remove the battery slowly away from the camcorder.

 Removing the battery quick or in a different angle may cause sparks and damage to device.

Step 4 — Grip Belt



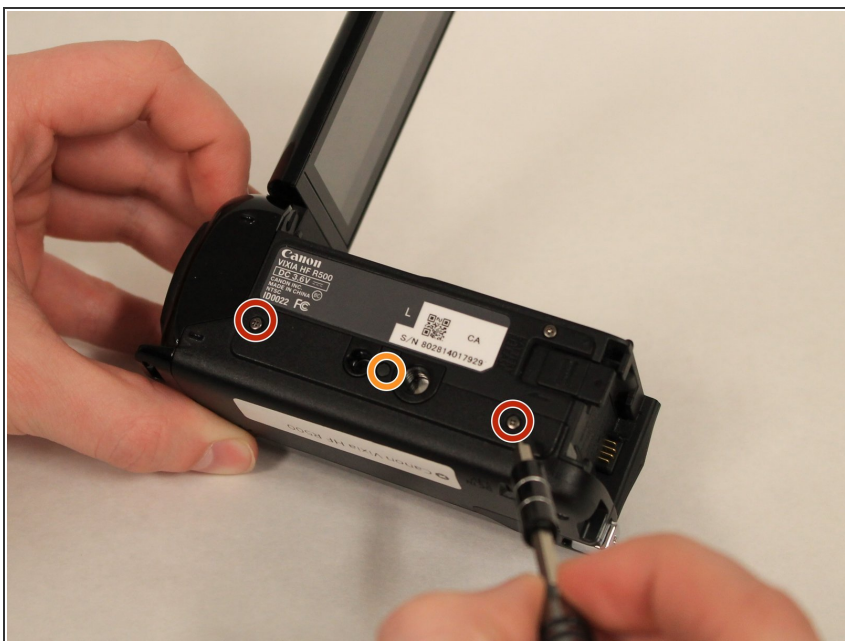
- On the right side of the camcorder remove the grip belt.

Step 5 — Canon Vixia HF R500 Disassembly



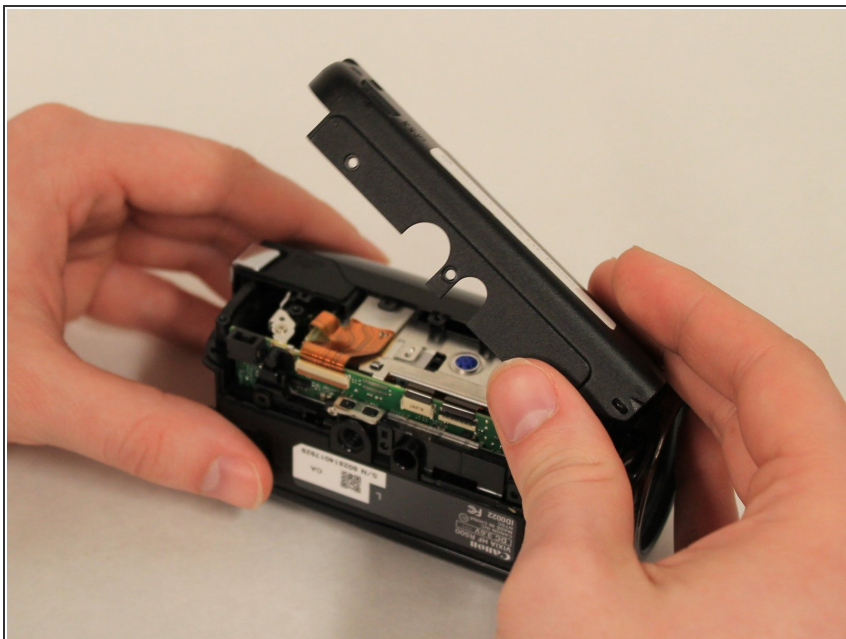
- Remove the two 8mm Philips #000 screws on the side where the grip belt was located on.

Step 6



- Remove the two 4mm Philips #000 head screws from the bottom of the camcorder.
- A hidden 4mm Philips #000 screw is shown under the black plug shown.

Step 7



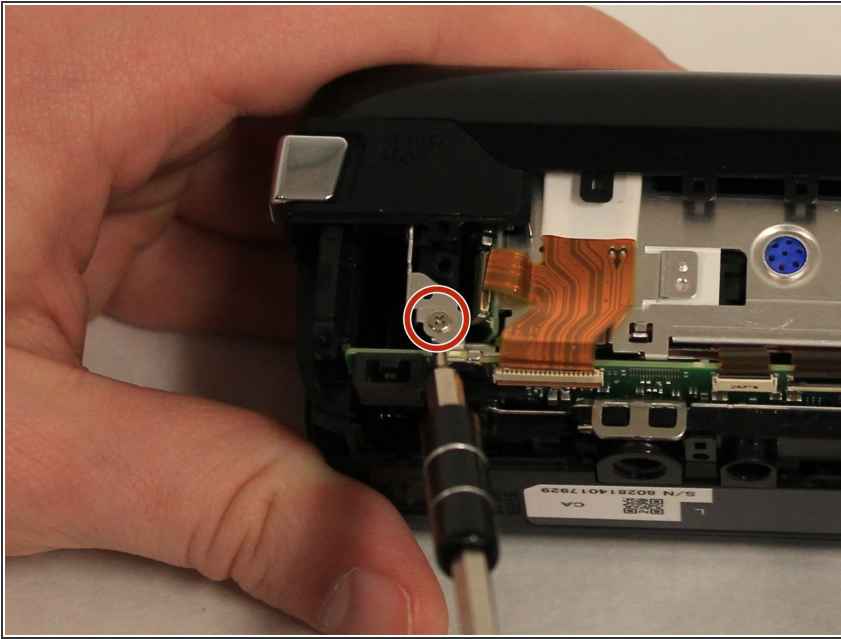
- Remove the side piece plate.

Step 8



- Near the LCD screen, remove the three 7mm Philips #000 screws in the picture shown.

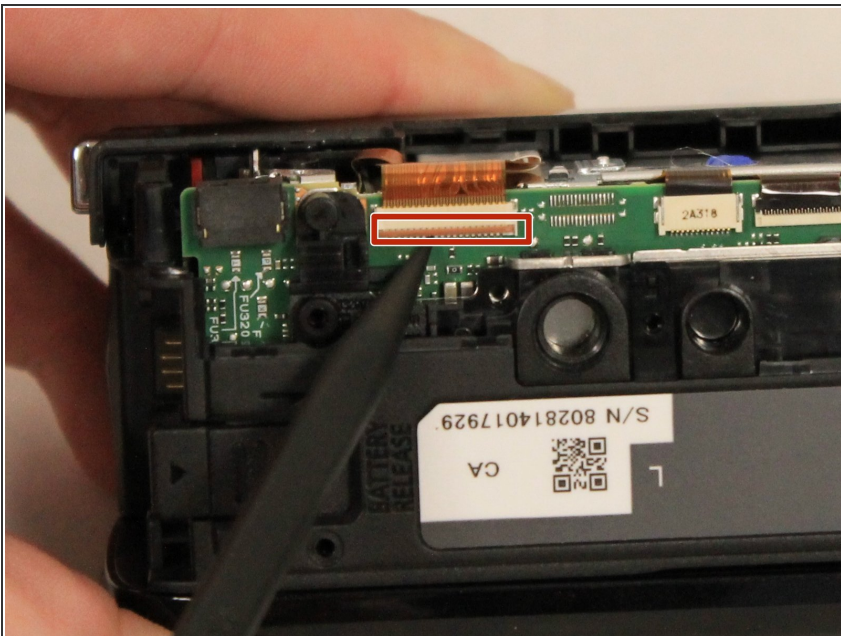
Step 9



- Carefully place the camcorder where the inside of the device is facing upwards and remove the 3mm Philips #000 screw shown.

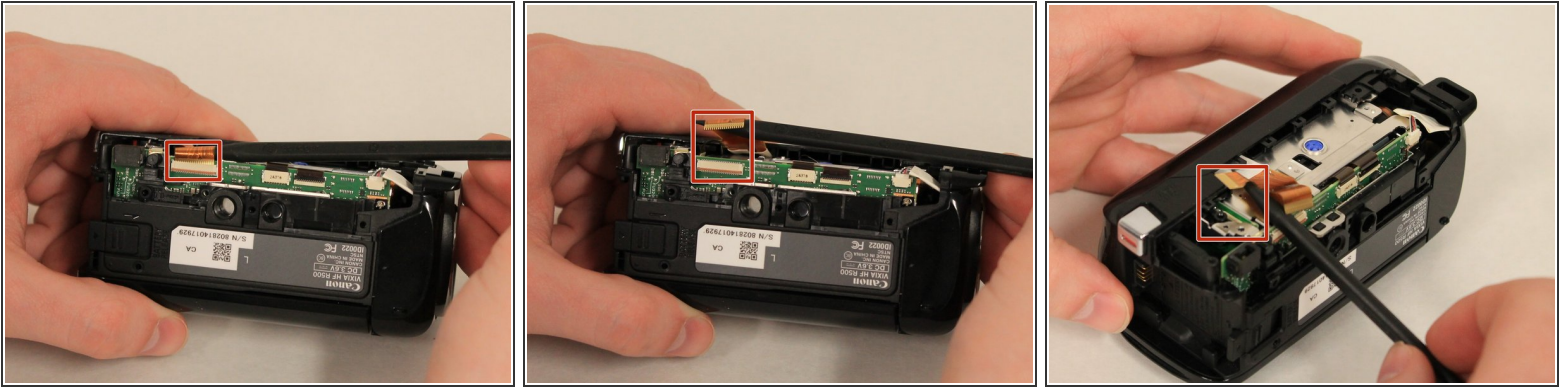
⚠ Do not use strong magnetic parts on the inside, as they may damage the device.

Step 10



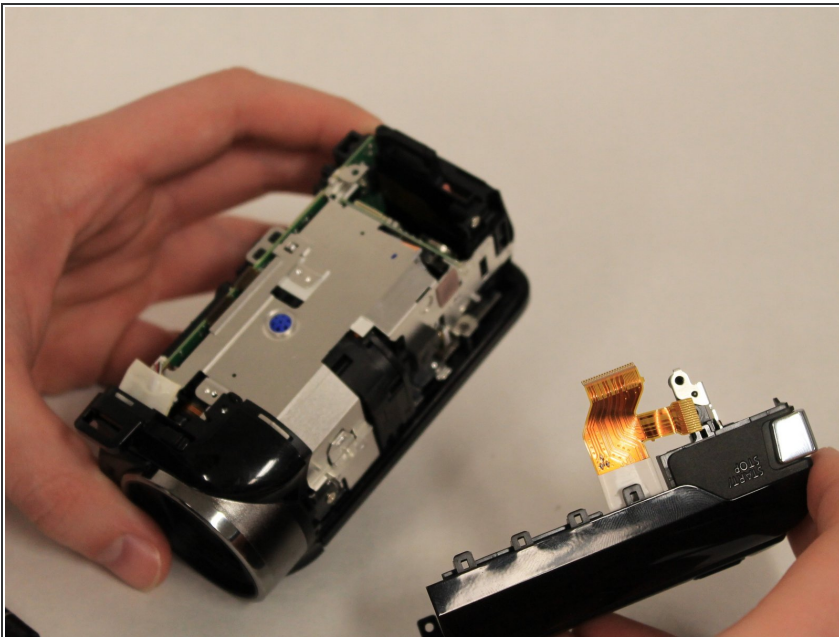
- Using the spudger, pull the tab shown to start removing the ribbon cable.

Step 11



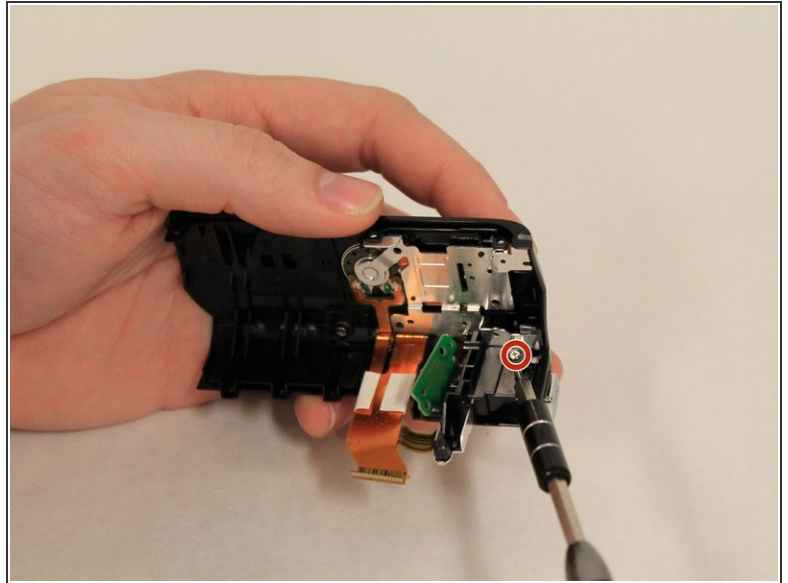
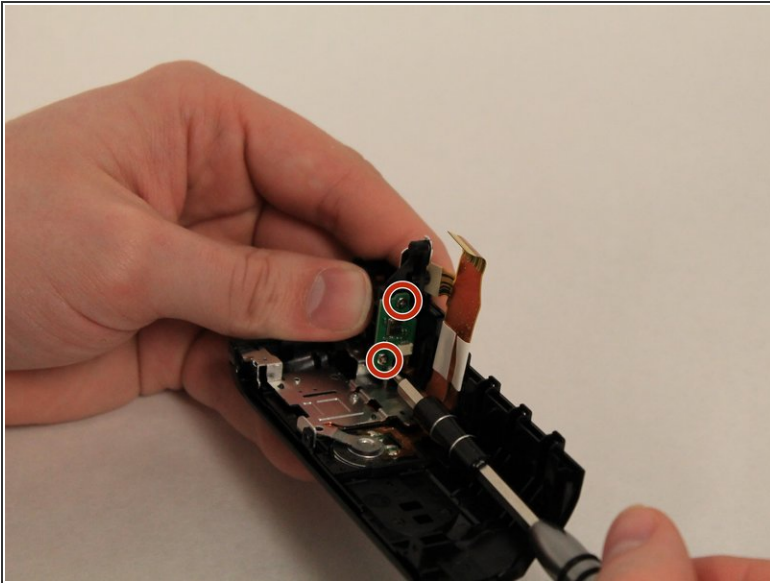
- Using the Spudger, carefully remove the two ribbon cables that are connected to the top of the device.

Step 12



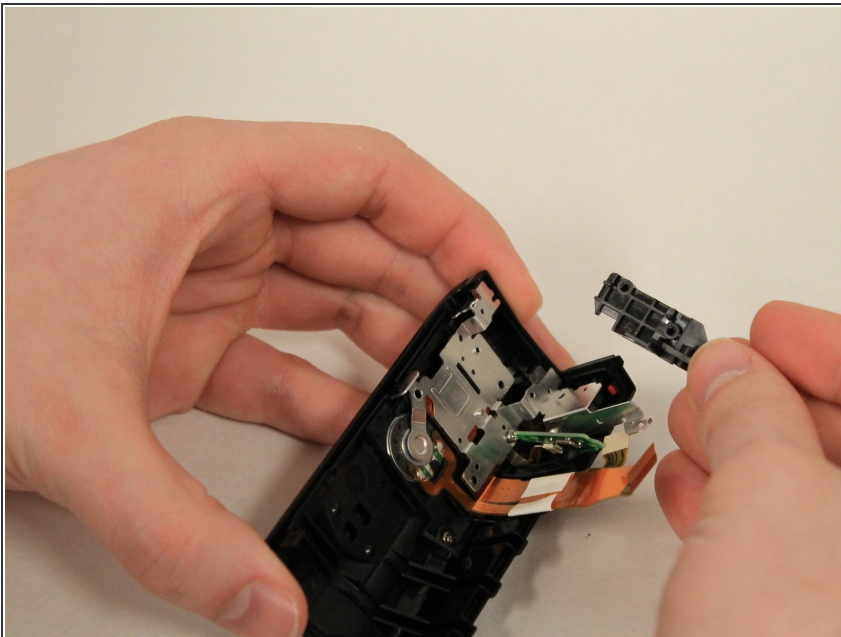
- Remove the top piece.

Step 13 — Speaker



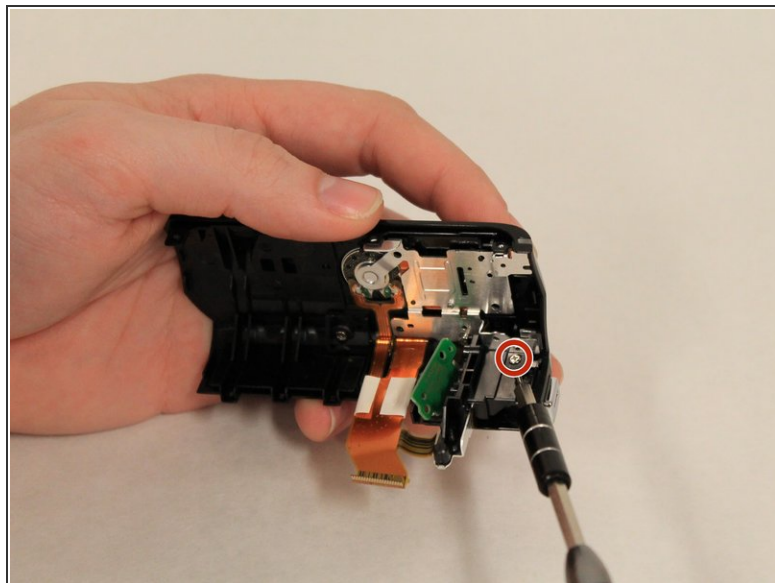
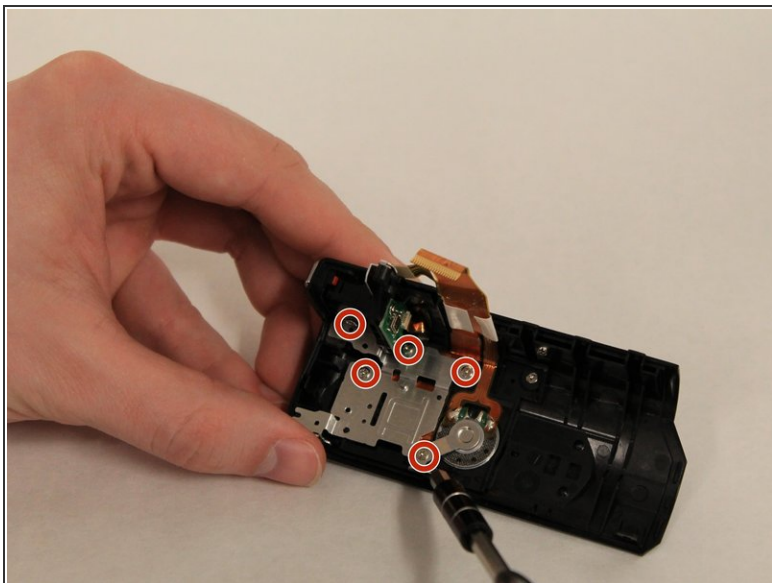
- Remove the three 6mm Philips #000 screws holding the black record piece.

Step 14



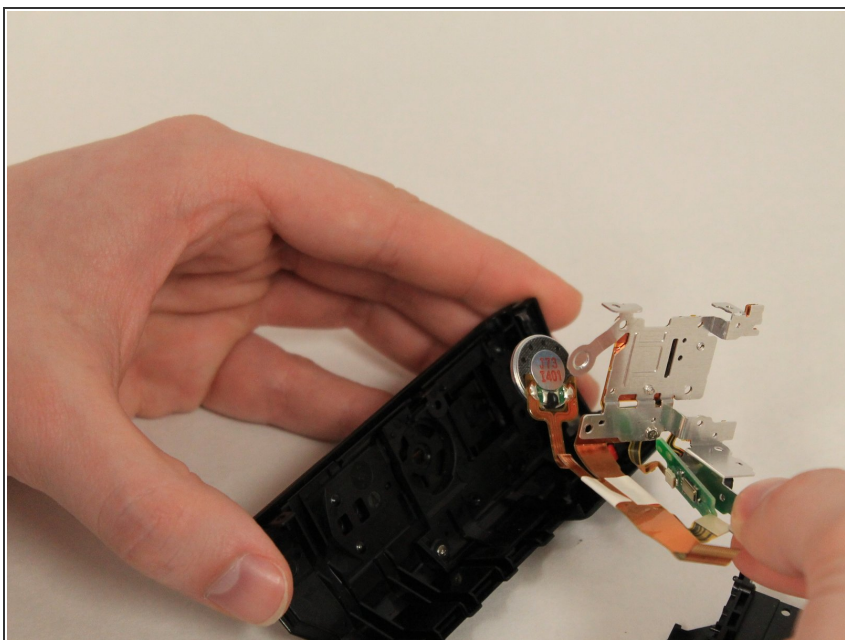
- Remove the black record piece.

Step 15



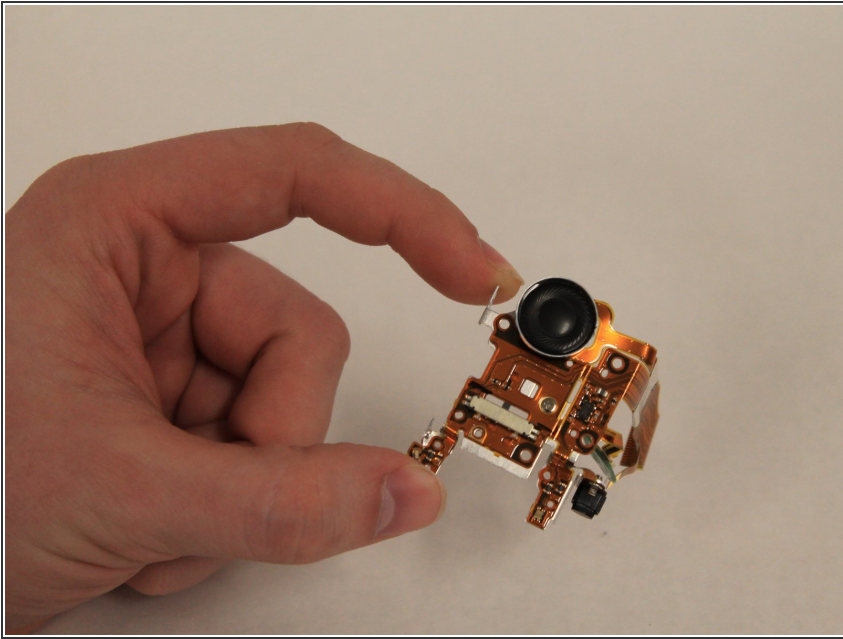
- Holding the full top piece remove the six 5mm Philips #000 screws holding the metal frame to the top piece.

Step 16



- Carefully remove the the whole metal frame out of the device piece.

Step 17



- Replace the defective speaker with a functioning one.

To reassemble your device, follow these instructions in reverse order.