



Fujifilm FinePix S1 LCD Screen Replacement

Replace your cracked or pixelated LCD screen to gain back the visual for your camera.

Written By: Brandon Benavente



INTRODUCTION

Following this guide involves the Fujifilm FinePix S1 and is moderately difficult.



TOOLS:

- [Phillips J0 Screwdriver](#) (1)
- [iFixit Opening Tools](#) (1)
- [Spudger](#) (1)



PARTS:

- [Fujifilm FinePix S1 LCD Screen](#) (1)

Step 1 — LCD Screen



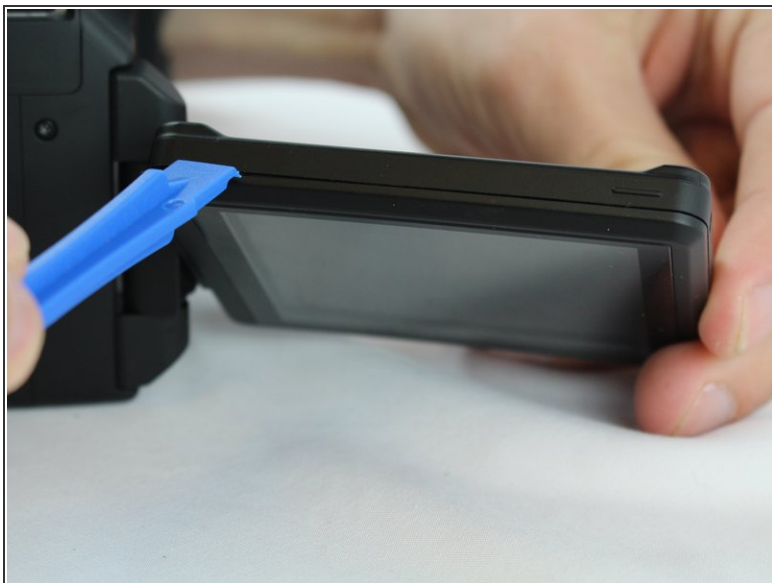
- Remove the 4 screws surrounding the LCD screen.

Step 2



- Use an opening tool to remove the casing on the hinge of the LCD screen.

Step 3



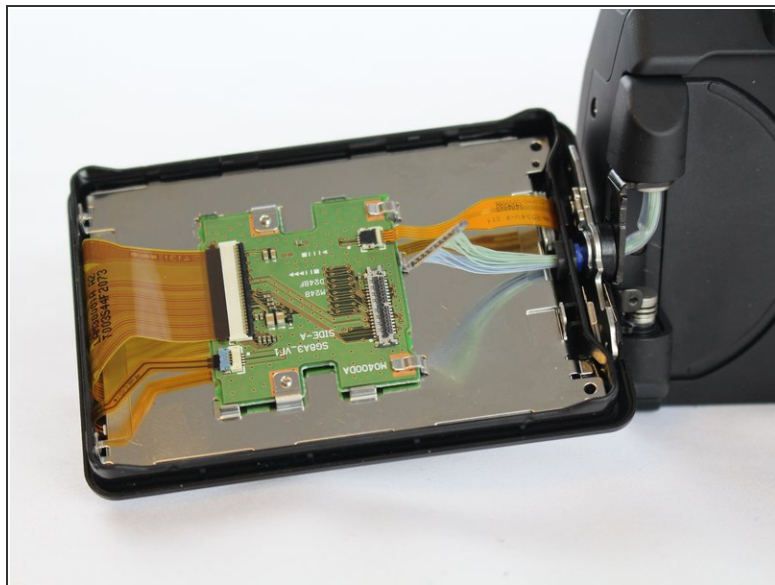
- Use an opening tool to pry apart the LCD screen casing and remove the casing.

Step 4



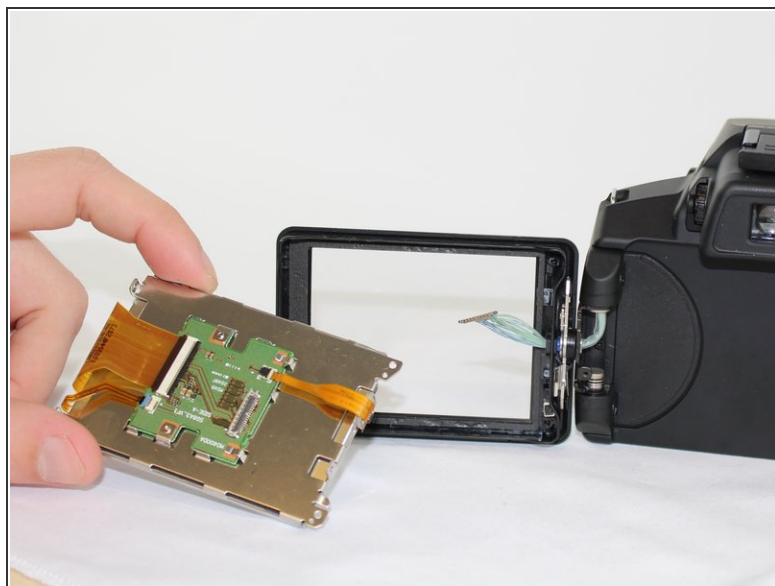
- Remove the 2 screws located on the inner corners of the inside of the LCD screen.

Step 5



- Disconnect the blue cable set by carefully prying it off with a spudger.

Step 6



- Use a spudger to lift the LCD screen out of its placement and remove it from the casing.

To reassemble your device, follow these instructions in reverse order.