



# Vtech Kidizoom Smart Watch DX Master Switch Replacement

This guide will show you how to replace the master switch of the watch.

Written By: Amber Hamlet



---

## INTRODUCTION

Is your master switch stuck or non-functional? This guide will show you how to replace it.

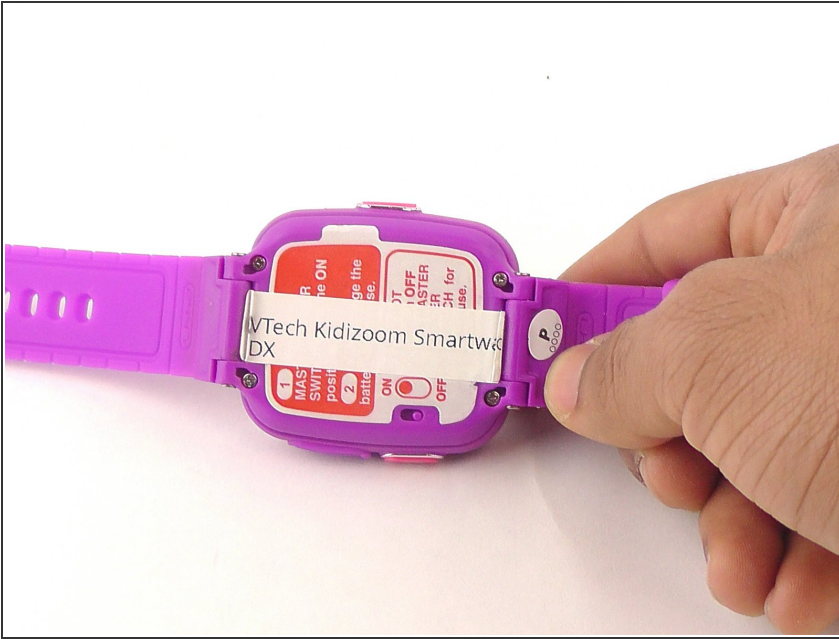
---



### TOOLS:

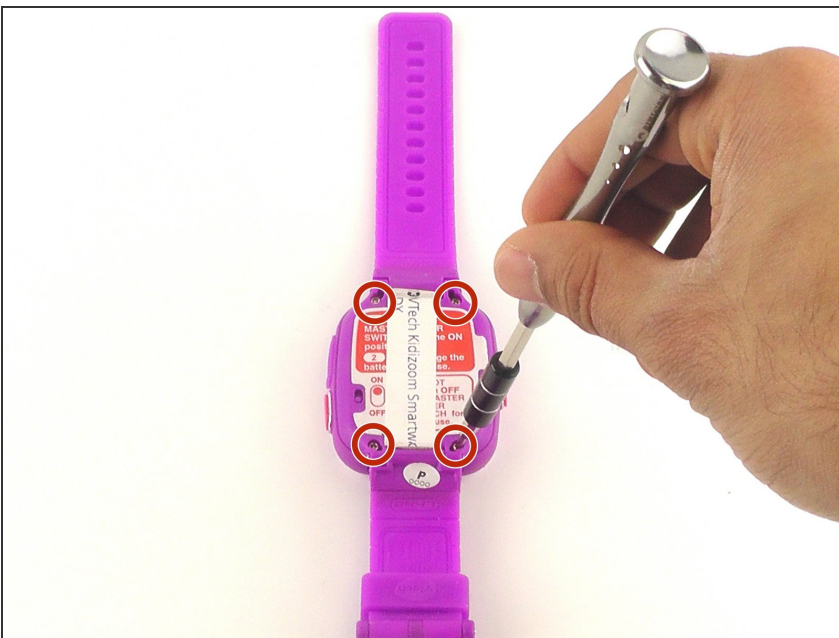
- [Phillips #00 Screwdriver](#) (1)
-

## Step 1 — Master Switch



- ⚠ Make sure the master switch is "OFF" before disassembly, to avoid an electric shock.
- Flip the watch over with the back facing up.

## Step 2



- Remove the four 6.0 mm screws on the back plate with the Phillips #00 screwdriver.

### Step 3



- Gently pull the back plate from the watch casing.

### Step 4



- Lift the master switch from the circuit board.

To reassemble your device, follow these instructions in reverse order.