



# Vtech Kidizoom Smart Watch DX Buttons Replacement

This guide will show you how to replace the buttons on your Vtech Kidizoom Smart Watch DX.

Written By: Mohammed Alyaarubi



## INTRODUCTION

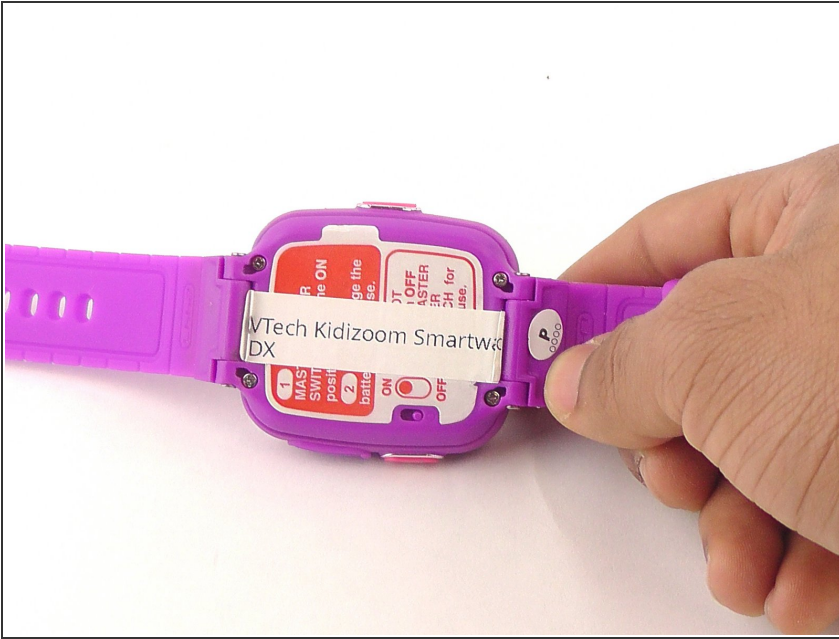
If the buttons are not working properly, this guide will help you replace them. Note: This guide requires [soldering](#).



### TOOLS:

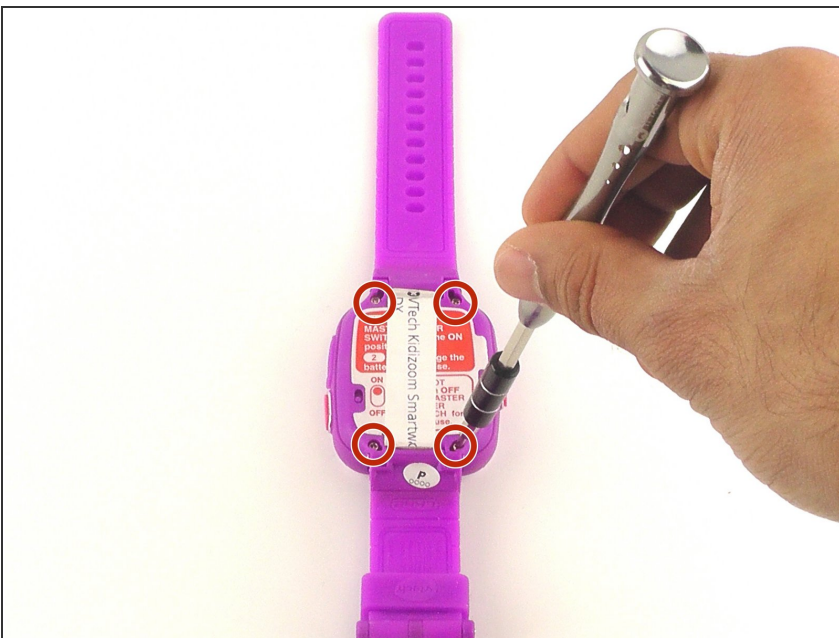
- [Solder](#) (1)
  - [Soldering Iron](#) (1)
  - [Tweezers](#) (1)
  - [Phillips #00 Screwdriver](#) (1)
  - [Desoldering Braid](#) (1)
-

## Step 1 — Master Switch



- ⚠ Make sure the master switch is "OFF" before disassembly, to avoid an electric shock.
- Flip the watch over with the back facing up.

## Step 2



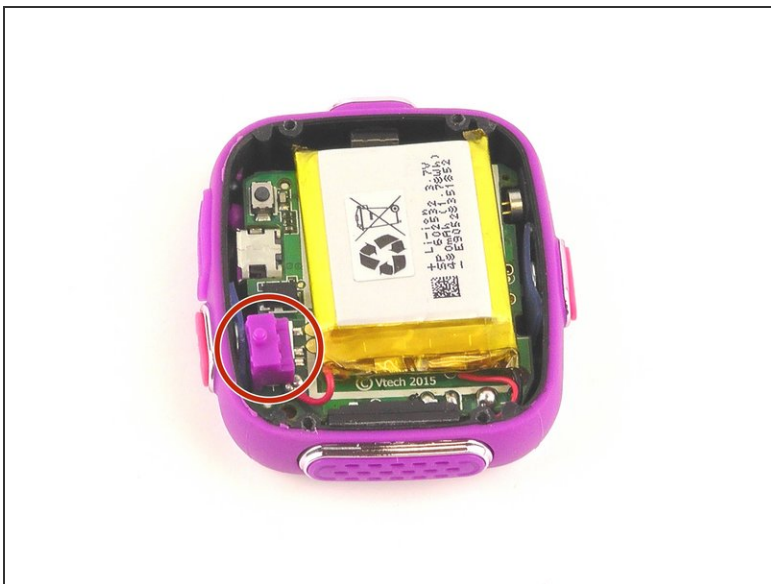
- Remove the four 6.0 mm screws on the back plate with the Phillips #00 screwdriver.

### Step 3



- Gently pull the back plate from the watch casing.



### Step 4



- Lift the master switch from the circuit board.

## Step 5 — Circuit Board



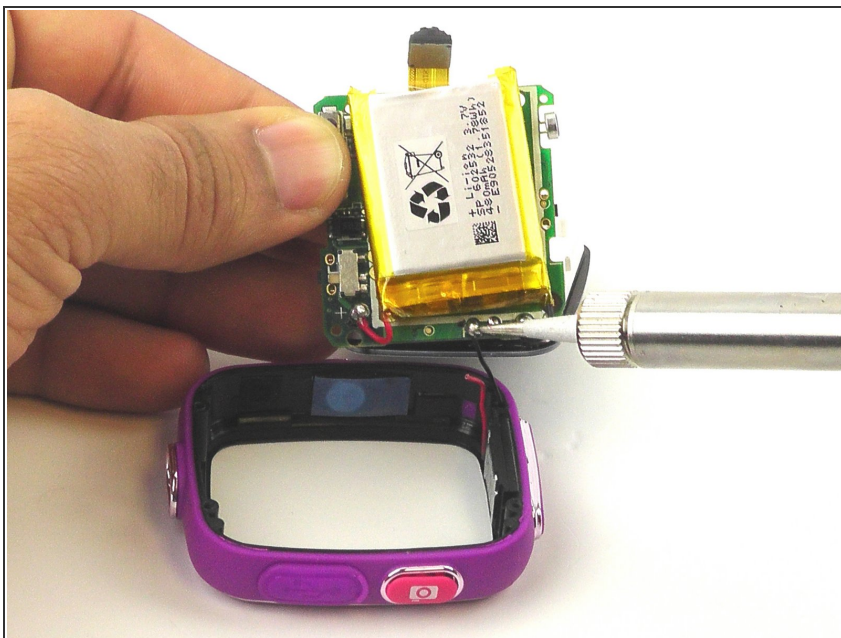
-  The speaker wires are fragile. They may break if excessive force is used to remove the circuit board.
-  Removal of the circuit board requires [soldering](#).
- Gently push on the display from the front, near the camera. The circuit board and display will pop out through the back.

## Step 6



- Lift the circuit board carefully from the casing, without breaking or detaching the speaker wires at the bottom of the circuit board.

## Step 7



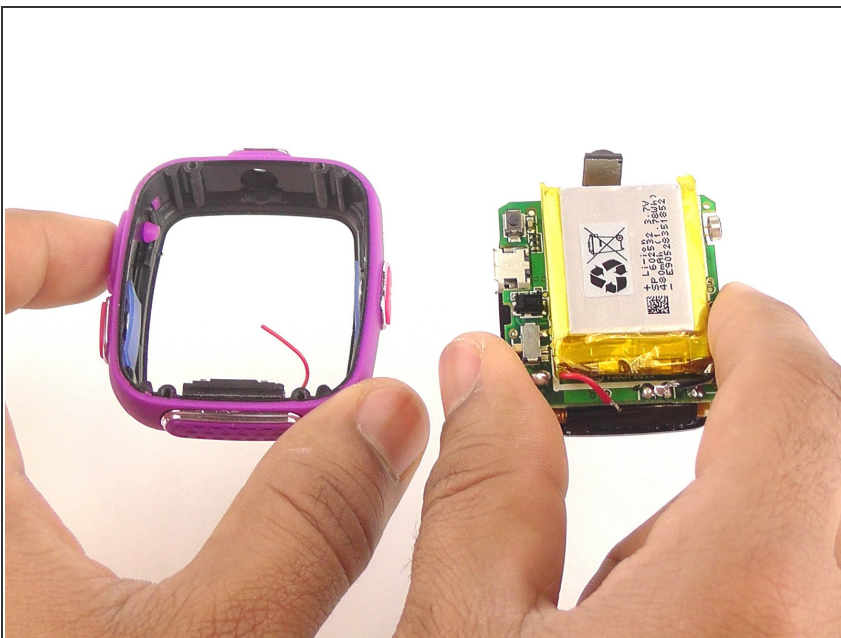
- ① Note which wire is connected to which lead before continuing. There are no markers on the circuit board to indicate where each wire belongs.
- De-solder the black speaker wire from the circuit board.

## Step 8



- De-solder the red speaker wire, as in the previous step.

## Step 9



- Wait for the solder to cool down and solidify, then remove the circuit board from the casing.

## Step 10 — Buttons



- Use the tweezers to pull off the blue rubber cover behind the button.
- ⓘ The blue cover is adhesive, so you can stick it back onto the back of the buttons after replacement.

## Step 11



- Use tweezers to separate the backside tab from the front side of the button.

## Step 12



- Push the other half of the button out of the casing.
- Repeat steps 11 and 12 for all buttons.

To reassemble your device, follow these instructions in reverse order.