



Vtech Kidizoom Smart Watch DX Buttons Replacement

If the buttons are not working properly, this...

Written By: Mohammed Alyaarubi



INTRODUCTION

If the buttons are not working properly, this guide will help you replace them. Note: This guide requires [soldering](#).

TOOLS:

Lead-Free Solder (1)

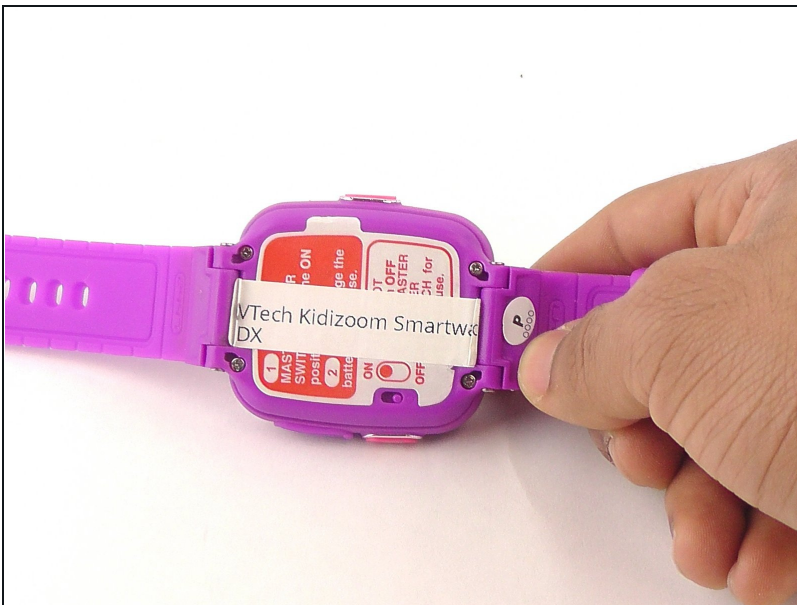
Soldering Iron (1)


Tweezers (1)

Phillips #00 Screwdriver (1)

Desoldering Braid (1)

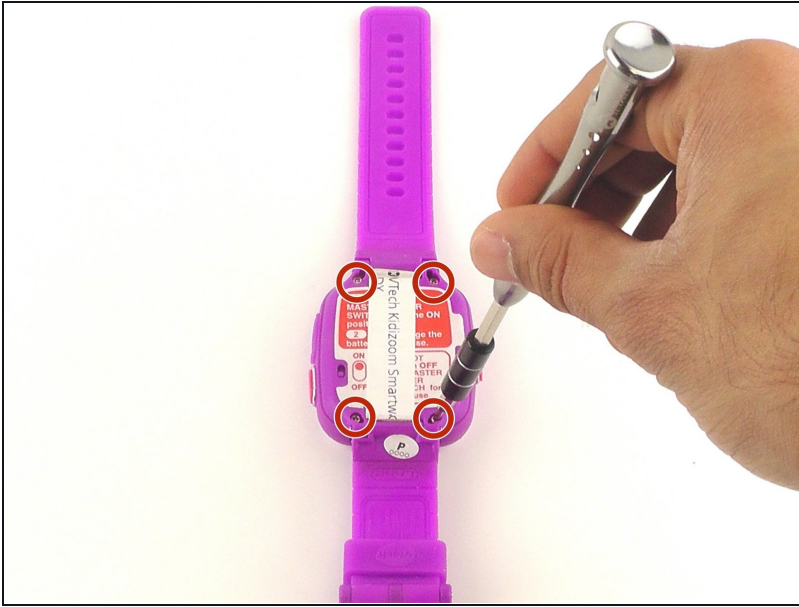
Step 1 — Master Switch



 Make sure the master switch is "OFF" before disassembly, to avoid an electric shock.

- Flip the watch over with the back facing up.

Step 2



- Remove the four 6.0 mm screws on the back plate with the Phillips #00 screwdriver.

Step 3



- Gently pull the back plate from the watch casing.

Step 4



- Lift the master switch from the circuit board.

Step 5 — Circuit Board



- ① The speaker wires are fragile. They may break if excessive force is used to remove the circuit board.

⚠ Removal of the circuit board requires [soldering](#).

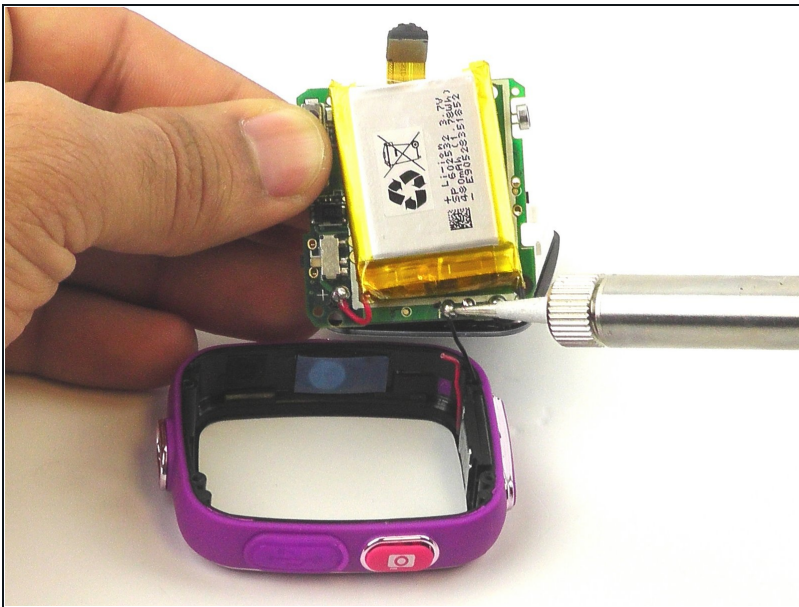
- Gently push on the display from the front, near the camera. The circuit board and display will pop out through the back.

Step 6



- Lift the circuit board carefully from the casing, without breaking or detaching the speaker wires at the bottom of the circuit board.

Step 7



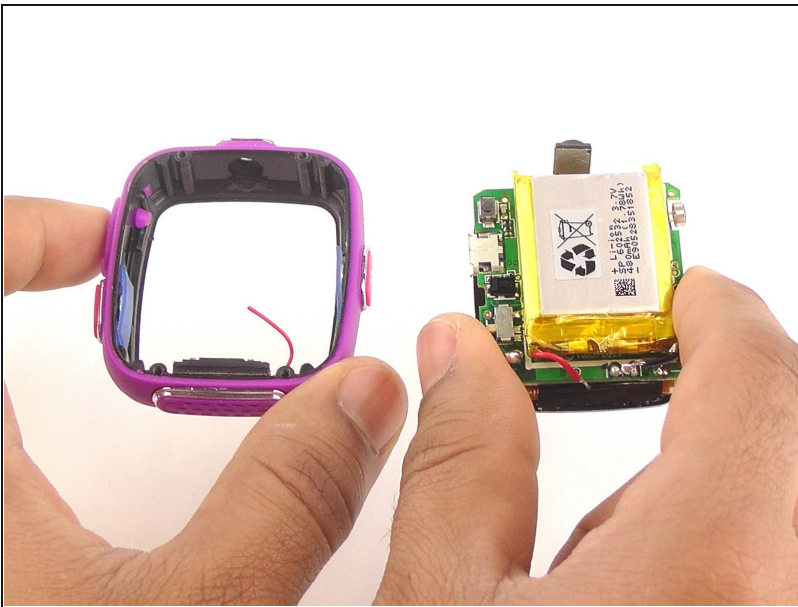
- ① Note which wire is connected to which lead before continuing. There are no markers on the circuit board to indicate where each wire belongs.
- De-solder the black speaker wire from the circuit board.

Step 8



- De-solder the red speaker wire, as in the previous step.

Step 9



- Wait for the solder to cool down and solidify, then remove the circuit board from the casing.

Step 10 — Buttons



- Use the the [tweezers](#) to pull off the blue rubber cover behind the button.
- ① The blue cover is adhesive, so you can stick it back onto the back of the buttons after replacement.

Step 11



- Use tweezers to separate the backside tab from the front side of the button.

Step 12



- Push the other half of the button out of the casing.
- Repeat steps 11 and 12 for all buttons.

To reassemble your device, follow these instructions in reverse order.