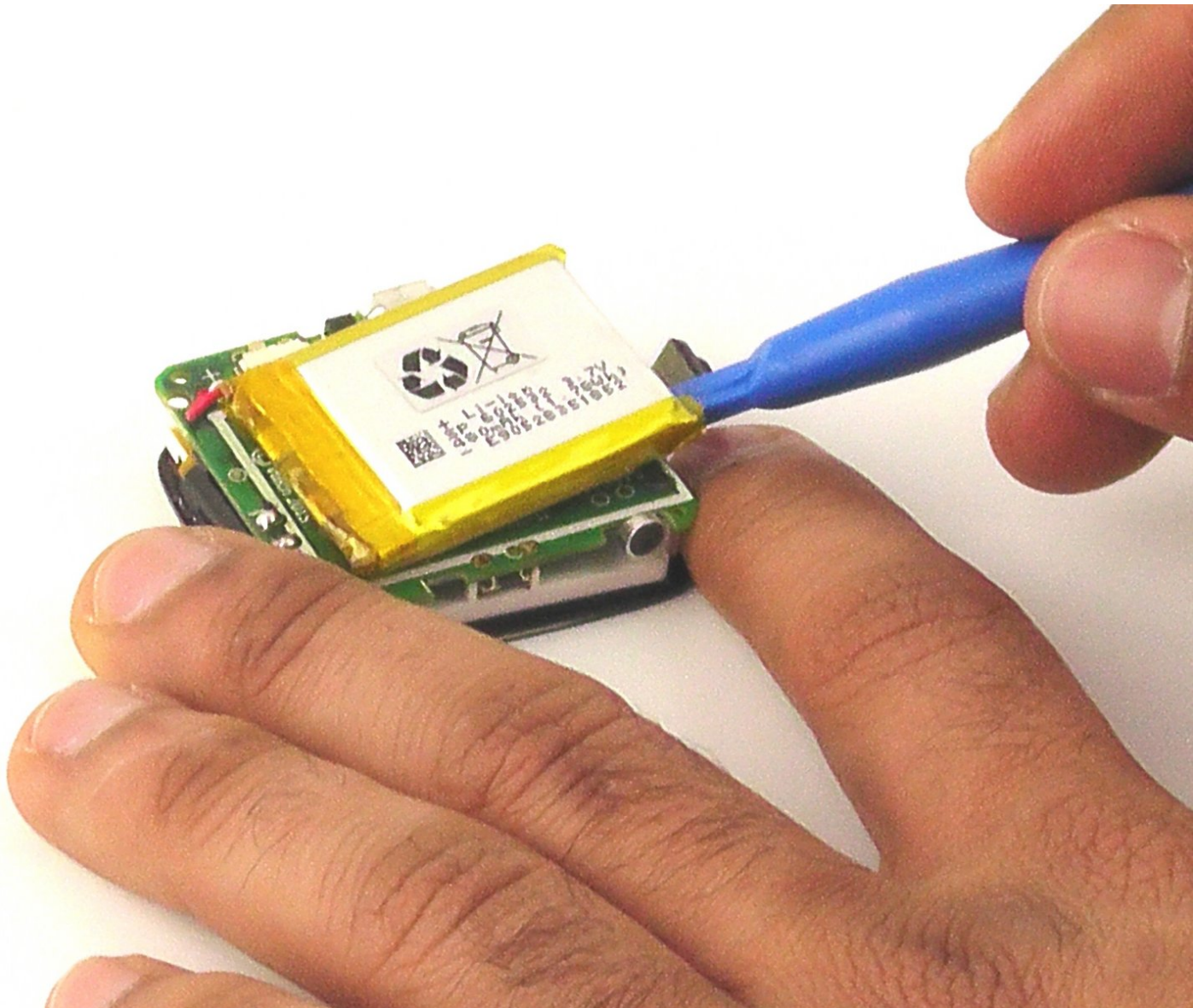




# Vtech Kidizoom Smart Watch DX Battery Replacement

This guide will show you how to properly replace the battery on this watch.

Written By: Navin Ramkishun



---

## INTRODUCTION

Battery dead, or not holding a charge? Follow this guide to replace it with a new one! Note: This guide requires [soldering](#).

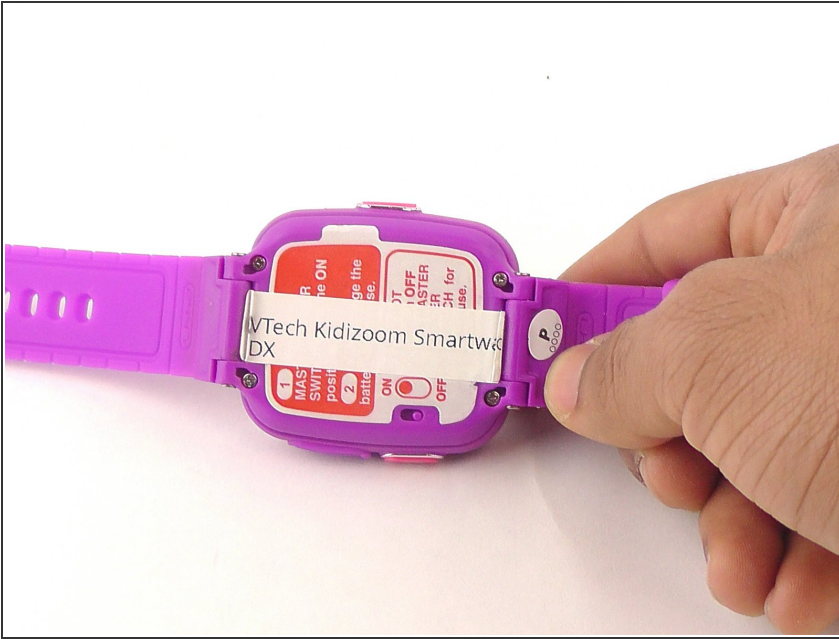
---



### TOOLS:

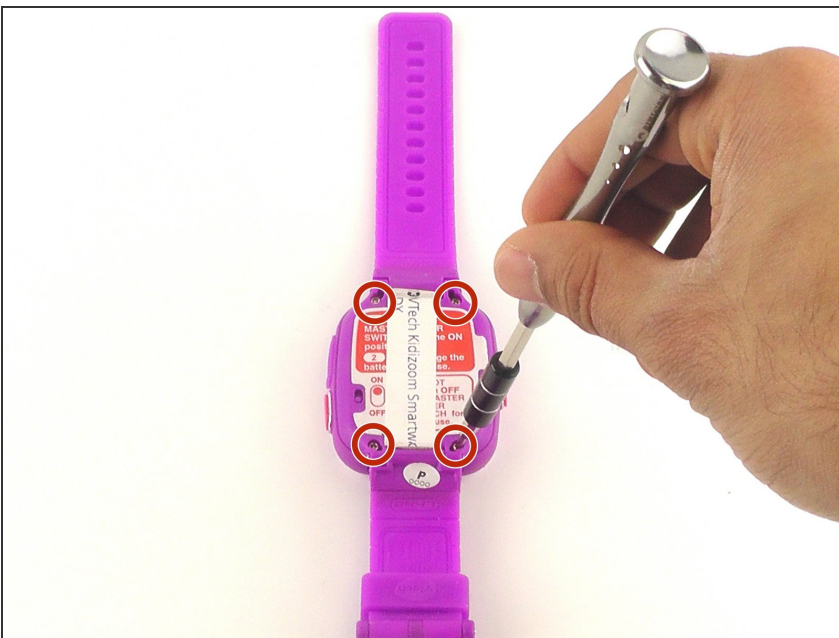
- [iFixit Opening Tools](#) (1)
  - [Soldering Iron](#) (1)
  - [Desoldering Braid](#) (1)
  - [Phillips #00 Screwdriver](#) (1)
  - [Solder](#) (1)
-

## Step 1 — Master Switch



- ⚠ Make sure the master switch is "OFF" before disassembly, to avoid an electric shock.
- Flip the watch over with the back facing up.

## Step 2



- Remove the four 6.0 mm screws on the back plate with the Phillips #00 screwdriver.

### Step 3



- Gently pull the back plate from the watch casing.

### Step 4





- Lift the master switch from the circuit board.



## Step 5 — Circuit Board



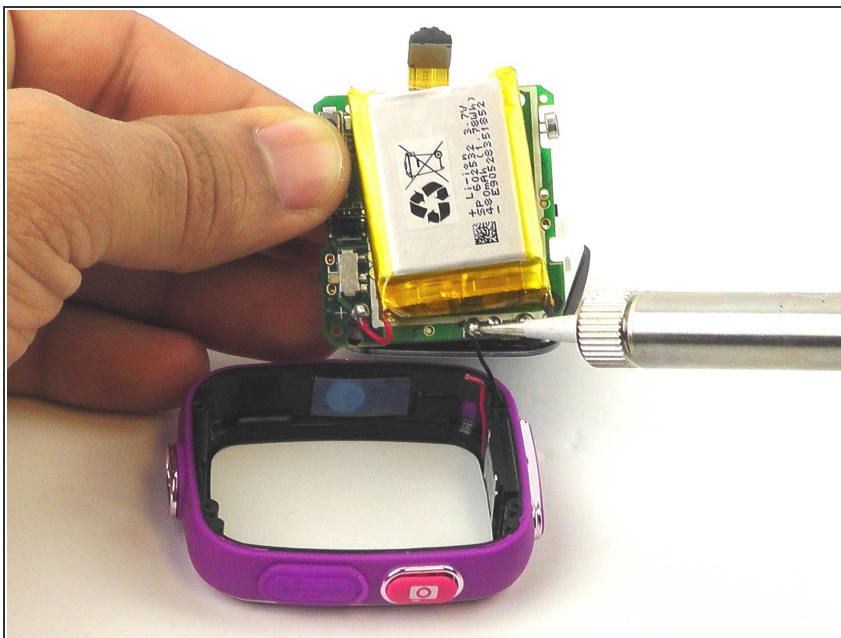
-  The speaker wires are fragile. They may break if excessive force is used to remove the circuit board.
-  Removal of the circuit board requires [soldering](#).
- Gently push on the display from the front, near the camera. The circuit board and display will pop out through the back.

## Step 6



- Lift the circuit board carefully from the casing, without breaking or detaching the speaker wires at the bottom of the circuit board.

## Step 7



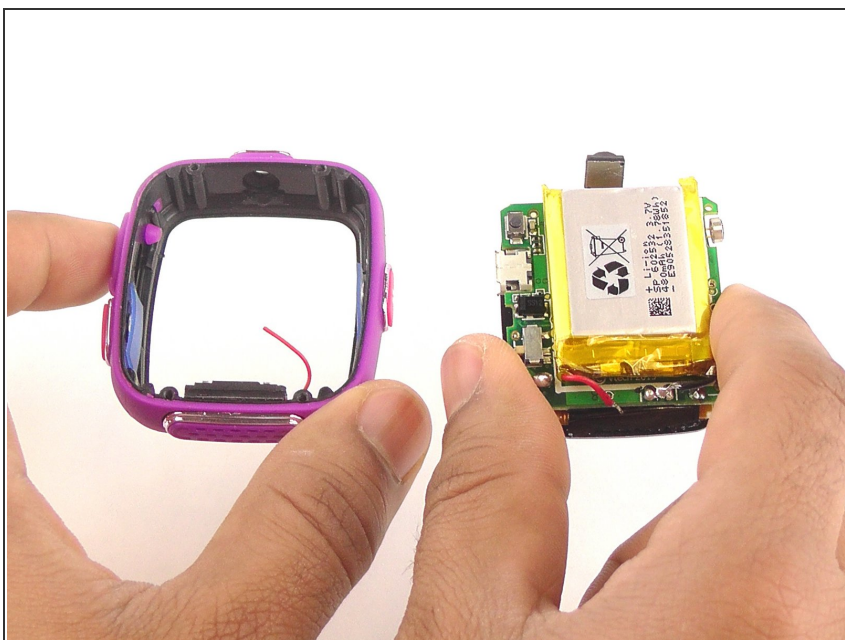
- ① Note which wire is connected to which lead before continuing. There are no markers on the circuit board to indicate where each wire belongs.
- De-solder the black speaker wire from the circuit board.

## Step 8



- De-solder the red speaker wire, as in the previous step.

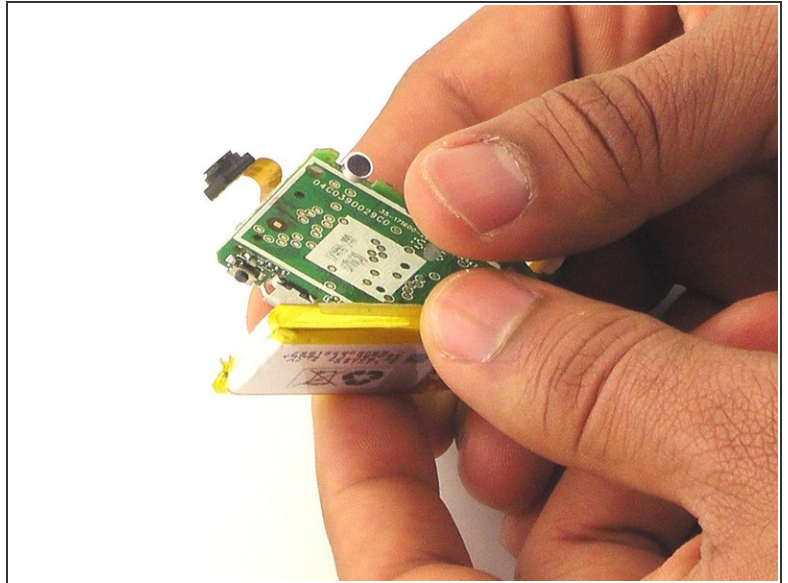
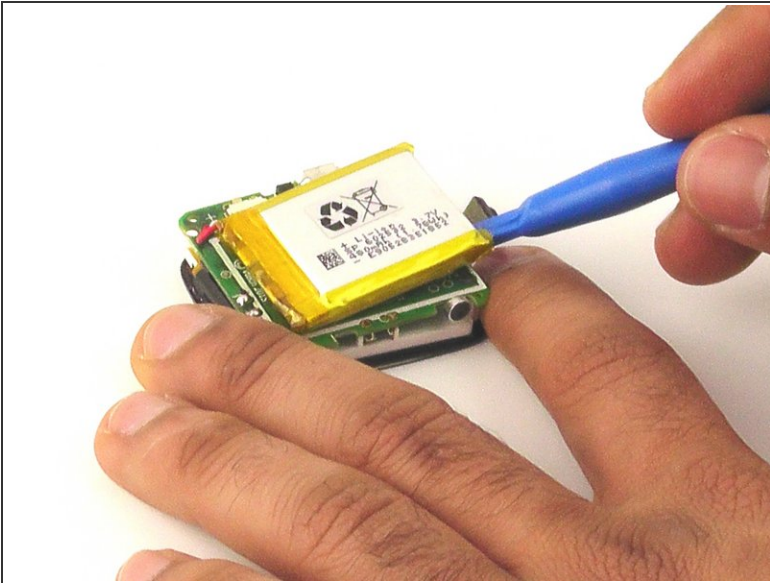
## Step 9



- Wait for the solder to cool down and solidify, then remove the circuit board from the casing.

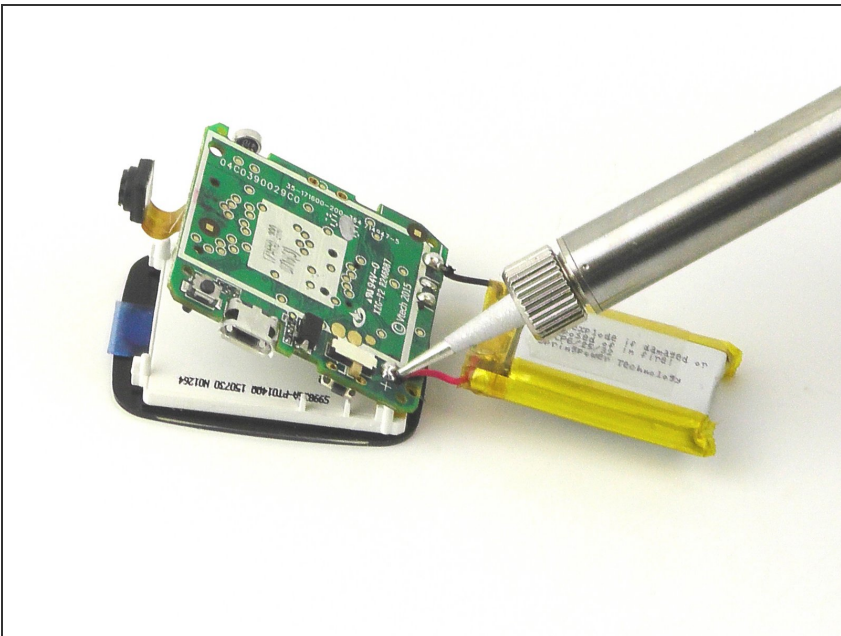


## Step 10 — Battery



- Using the plastic opening tool, gently pry the edges of the battery away from the circuit board.
- ❗ There is a thin layer of adhesive holding the battery to the circuit board. This will remain sticky after prying.

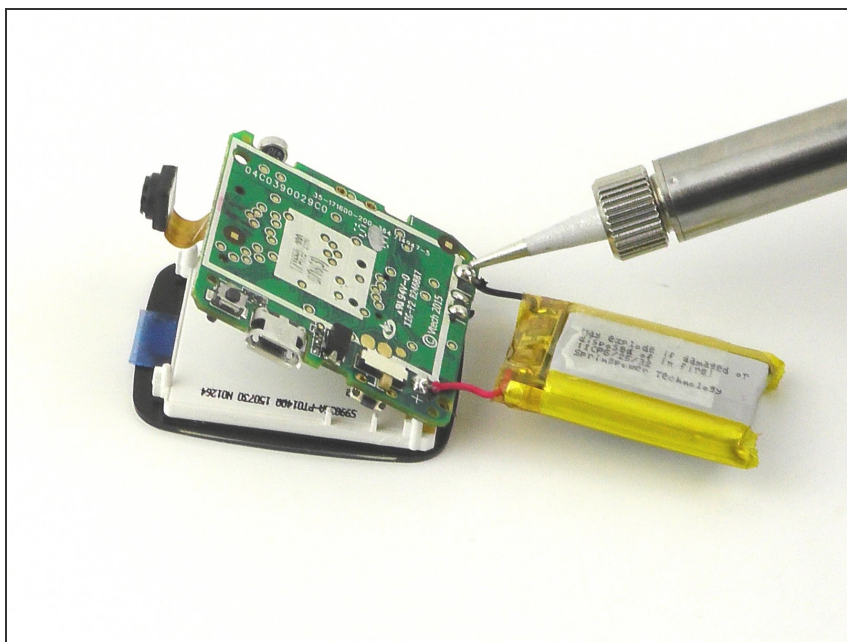
## Step 11



- De-solder the red battery wire from the circuit board.

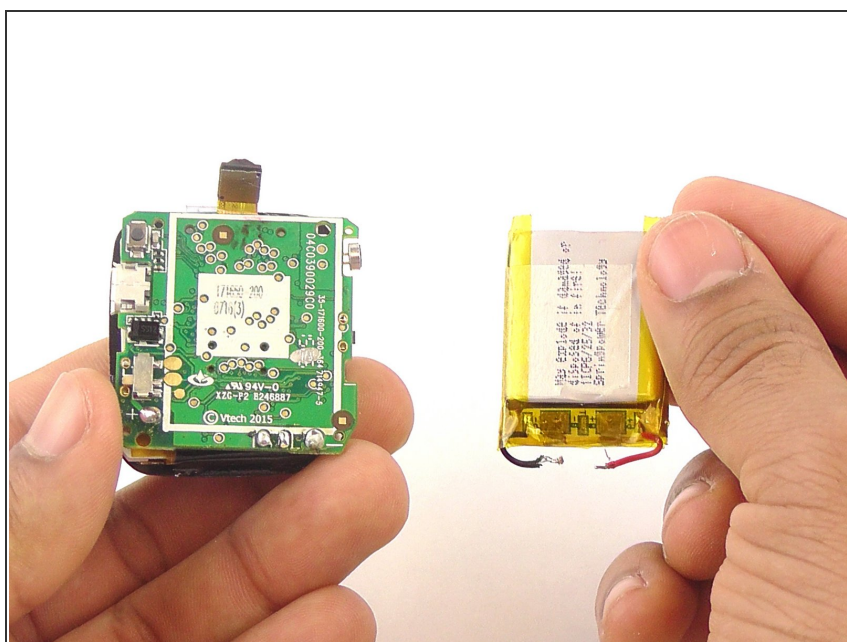


## Step 12



- Repeat the de-soldering for the black (ground) wire.

## Step 13



- Pull the battery free, and wait for the solder to cool before handling further.

To reassemble your device, follow these instructions in reverse order.