



Samsung NX3000 LCD Replacement

This guide will show you how to remove the LCD...

Written By: Kelsea Weber



INTRODUCTION

This guide will show you how to remove the LCD on the back of the Samsung NX3000. You can also follow this guide to remove the button panel located next to the LCD.

We highly suggest you use a [magnetic project mat](#) or an organization tray. This camera has **many** different types of screws and keeping them organized is key to proper reassembly.

TOOLS:

[Magnetic Project Mat](#) (1)


[Phillips #00 Screwdriver](#) (1)

[Tweezers](#) (1)

[Spudger](#) (1)

Step 1 — Battery



- Turn the camera upside down. Only remove the lens if you have to in order to access the battery compartment, as dust particles could easily enter the main body and fall onto the delicate sensor.
 - Slide the button to the left to open the battery compartment.
 - Push the blue button up to release the battery.
-  The battery is not shown in these photos.

Step 2 — Lens Assembly



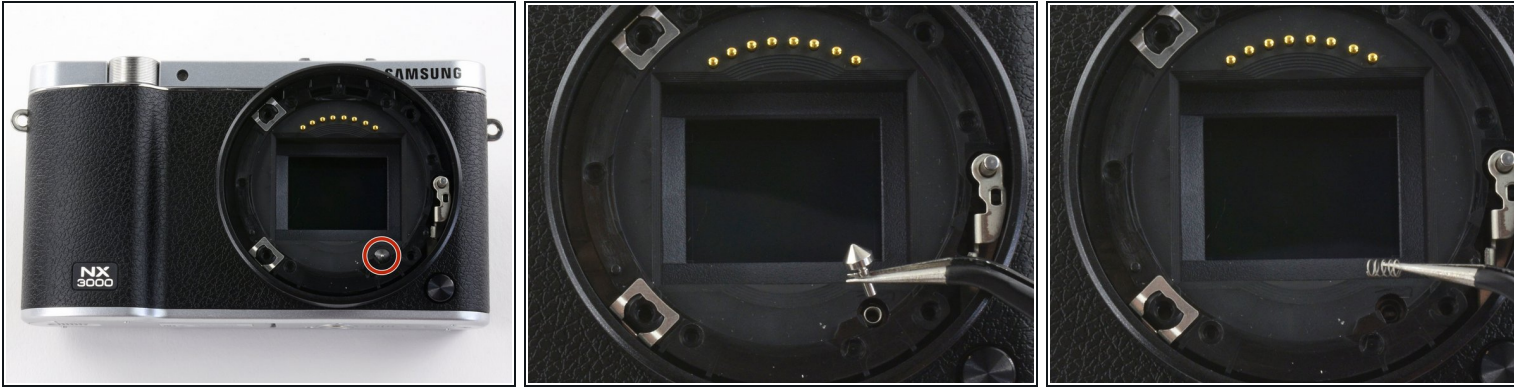
- Remove the four 7.3 mm Phillips screws from the front of the lens assembly.
- Remove the silver ring with tweezers.

Step 3



- Use tweezers to remove the black plastic ring and small metal ring inside the lens assembly.

Step 4



- Use tweezers to lift the pyramid screw and spring from the lens assembly.

Step 5 — Back Case



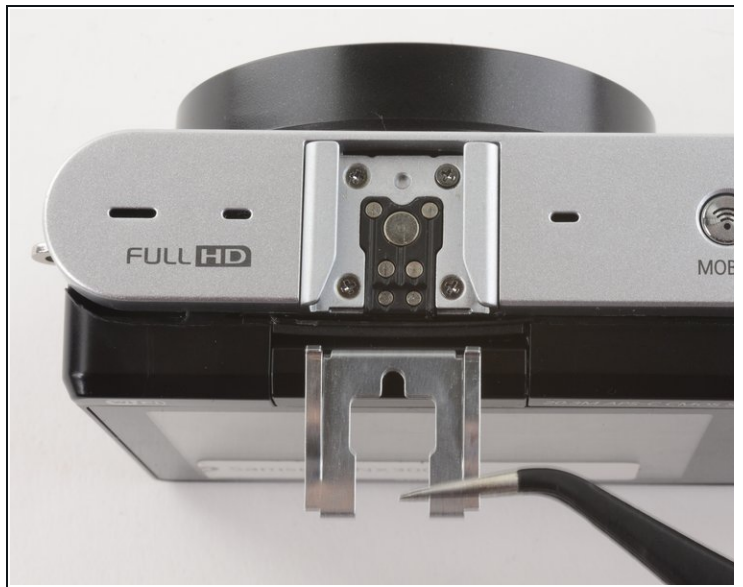
- Remove the three 4.3 mm Phillips screws from the bottom of the camera.
- Remove the 4.3 mm Phillips screw hiding inside the battery compartment.

Step 6



- Remove the 4.2 mm Phillips screw from the left handgrip.
- Remove the two 4.2 mm Phillips screws from the right handgrip.

Step 7



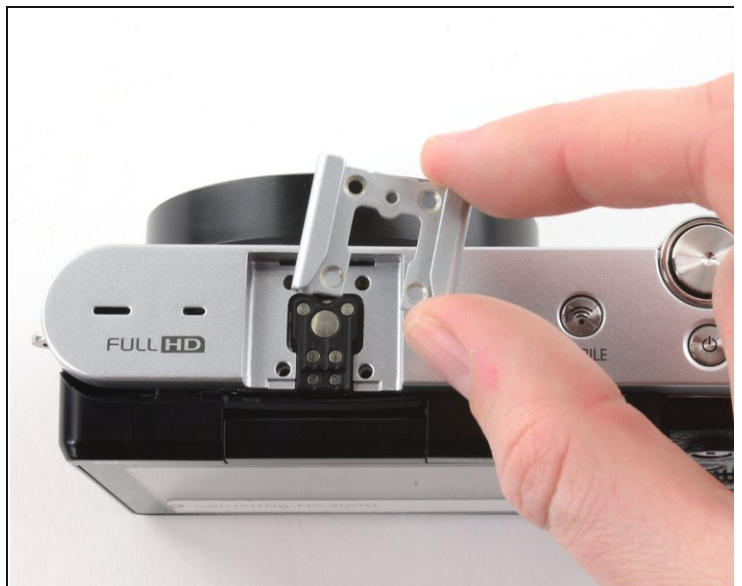
- Use tweezers to remove the metal shield from the external flash mount.

Step 8



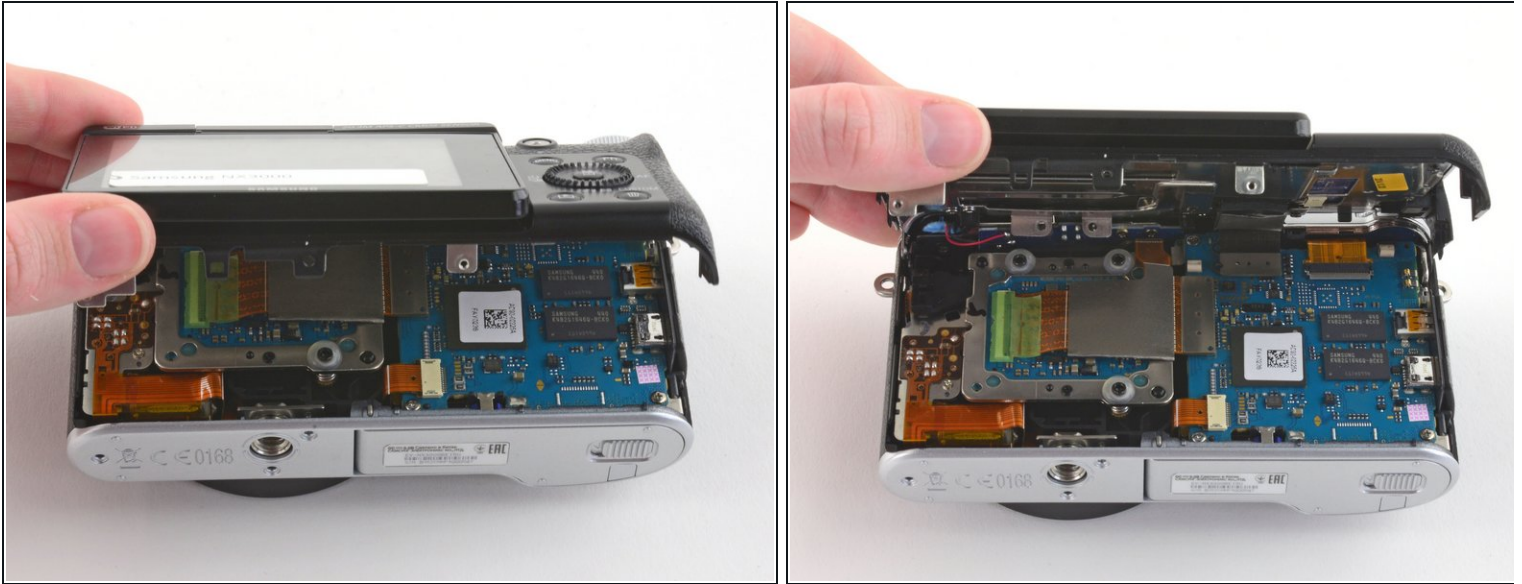
- Remove the four 5 mm Phillips screws from the external flash mount .

Step 9



- Remove the external flash mount.

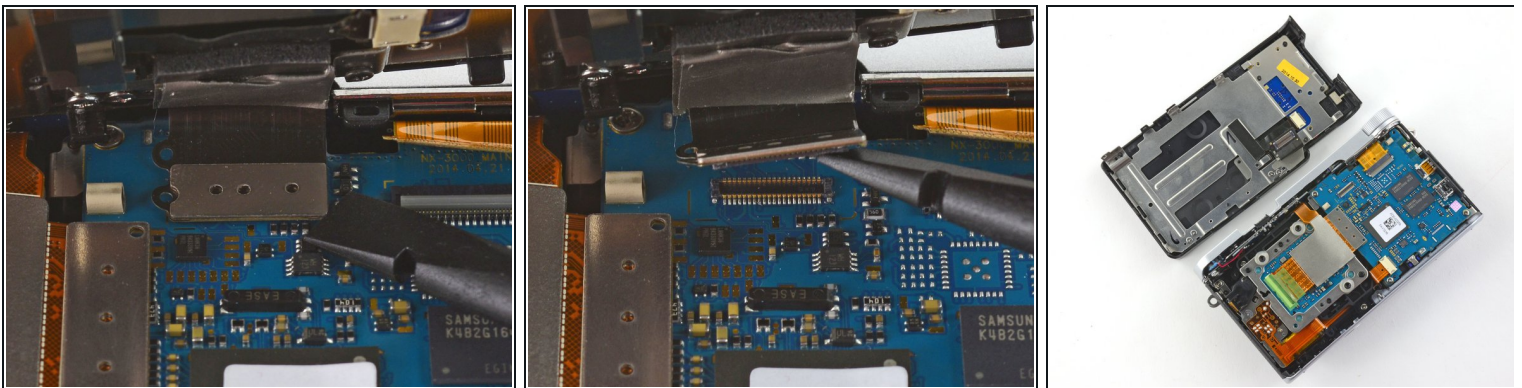
Step 10



- Slowly pull the bottom of the back case away from the camera.

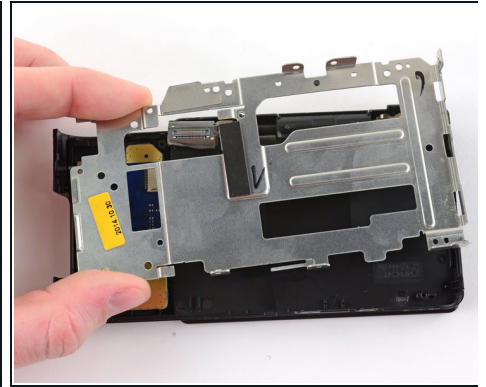
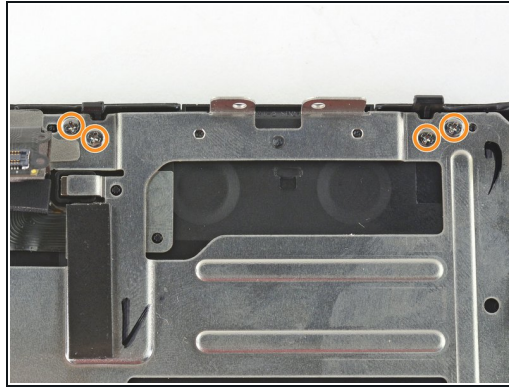
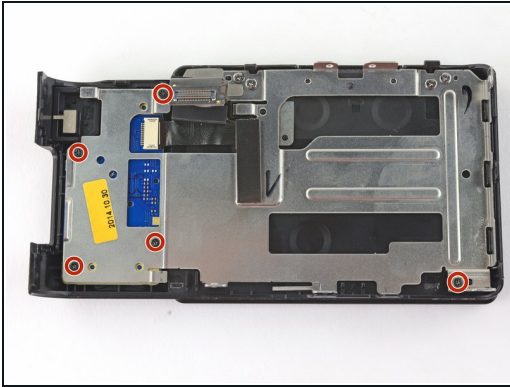
⚠ Do not attempt to remove the back case as it is attached to the motherboard by a ribbon cable.

Step 11



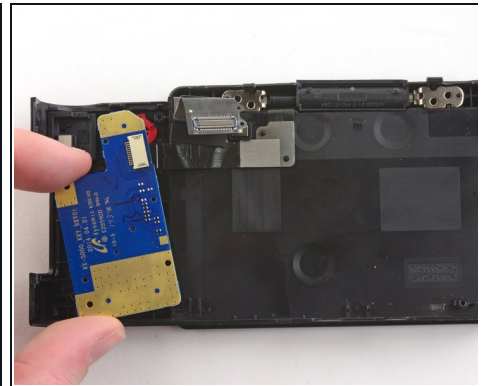
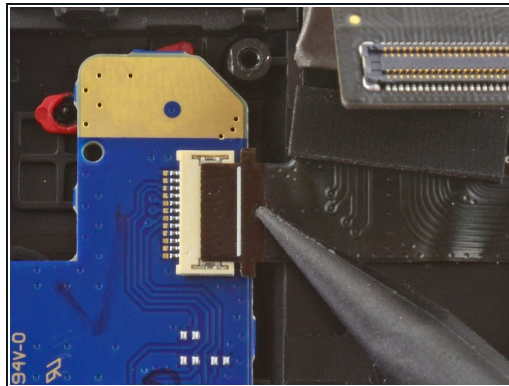
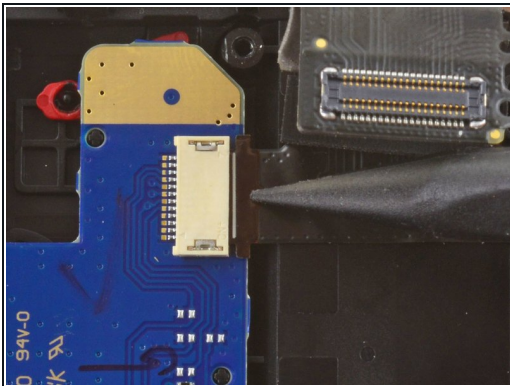
- Use the flat end of a spudger to pry the flat topped connector straight up from the motherboard.
- Remove the back case.

Step 12 — LCD



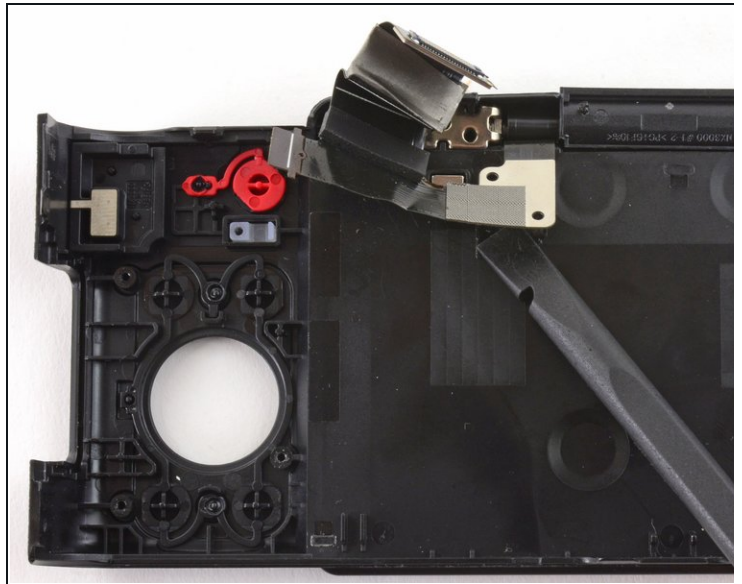
- To remove the metal shield on the back case, remove the following screws:
- Five black 4.2 mm Phillips screws .
- Four silver 5.3 mm Phillips screws.

Step 13



- Insert the pointed end of a spudger into the whole on the ribbon cable holding the button panel to the back case.
- Remove the button panel.

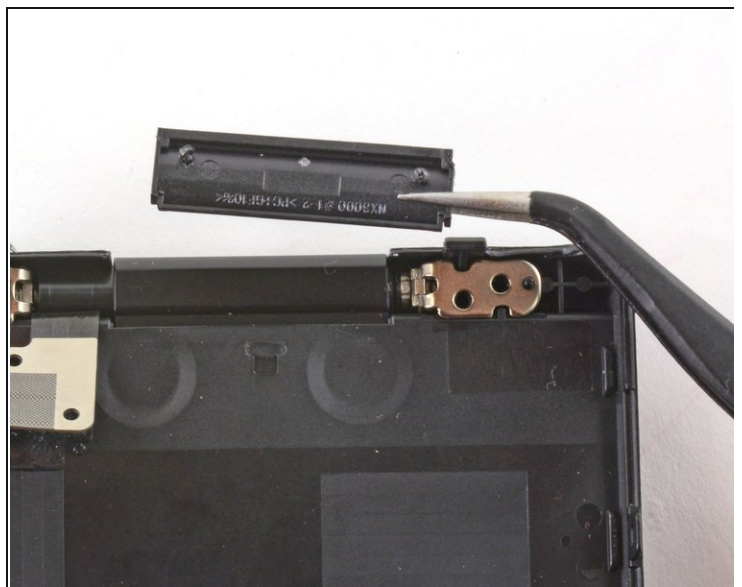
Step 14



- Use a spudger to peel back the LCD ribbon from the back case.

i The ribbon is held in place by adhesive.

Step 15



- Use tweezers to remove the plastic cover on the LCD hinge.

Step 16



- Tilt the LCD so it lays flat against the back case.
- Wiggle the LCD joints and pull the LCD away from the back case.

To reassemble your device, follow these instructions in reverse order.