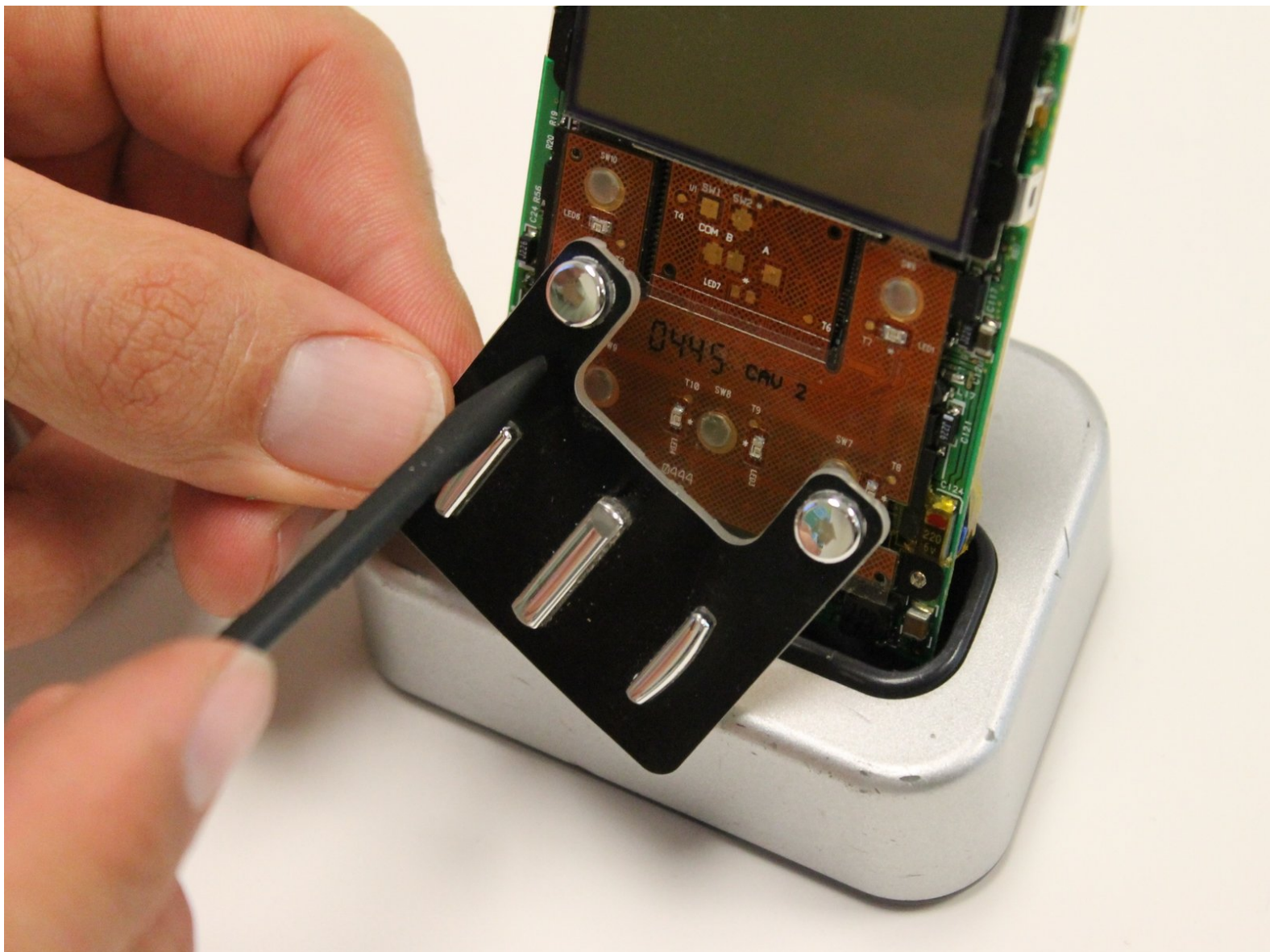




# Dell DJ Front Panel Buttons Replacement

When buttons simply do not work or buttons stick, pop, or stay pushed in.

Written By: Brittany Abate



---

## INTRODUCTION

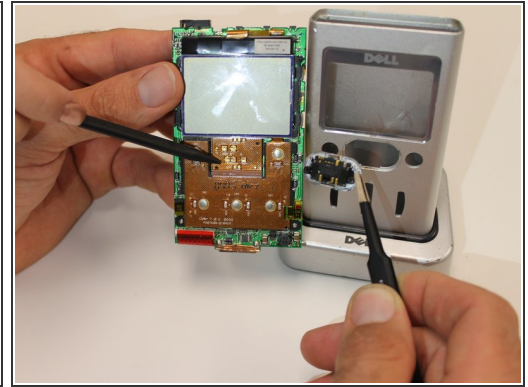
This guide will help one identify, clean, and/or repair the issue that causes unresponsive/sticky buttons.



### TOOLS:

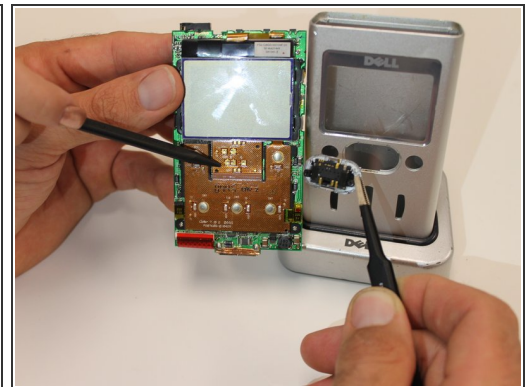
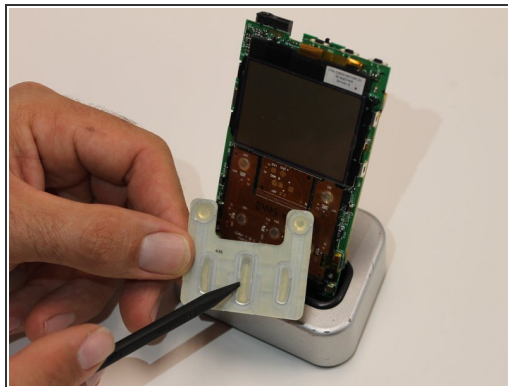
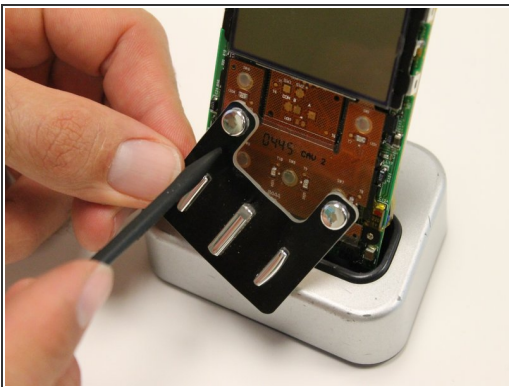
- [Spudger](#) (1)
  - [64 Bit Driver Kit](#) (1)
  - [Metal Spudger](#) (1)
-

## Step 1 — Front Panel Buttons



- Disassemble the device. See the [disassembly](#) guide for further directions. Slide the internal circuit board out of the protective device shell.
- Use the metal spudger to remove the device's center toggle button.
- ⓘ Inspect contacts on the device. Also, inspect the device buttons (front and back) for damage. Damage may include broken or missing prongs that will interrupt the devices circuit.

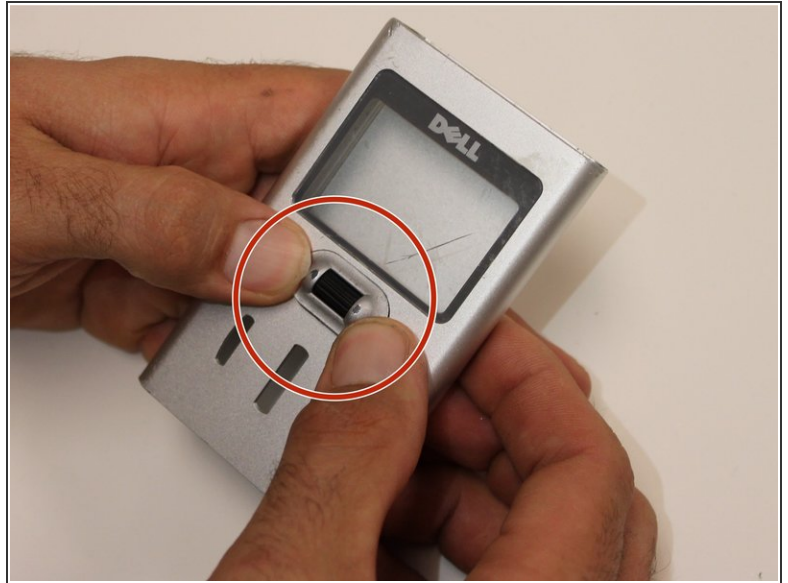
## Step 2



- Inspect and clean device buttons with appropriate materials.
- Wipe down the circuit board and the buttons with a disposable wipe. Then, use a cotton swab to remove dirt and grime in the crevices of the device.
- ⓘ Disposable wipes designed for cleaning devices are most appropriate for cleaning device circuit board. Other appropriate materials include: water dampened cotton cloth, microfiber cloth, cotton swabs, and disposable wipes made for electronic devices.



### Step 3



- Inspect the shell of the device before placing the button pad and center toggle back into the device.
- Look for cracks in the device's shell and identify whether the device shell is obstructing the button connection.
- Clean the shell thoroughly using a cotton swab into the creases of the the device shell. Use a water dampened cloth to wipe down the device shell inside and out.
- The center toggle (circled in red) button snaps into place. Be sure the center button is placed in correctly.

## Step 4



- After the device is assembled, power the device on. The issue with the unresponsive/sticky buttons should be repaired.
- ⓘ If the device buttons are still defective, an issue greater than the device button connection is the cause.

To reassemble your device, follow these instructions in reverse order.