



Palm Zire m150 Motherboard Replacement

This repair guide will guide any individual that wants to replace the motherboard on a Palm Zire m150 device.

Written By: Kate



INTRODUCTION

The Palm Zire m150 may sometimes need a motherboard replacement depending on the diagnosis. This guide will teach you how to replace that motherboard if that is the remedy needed after going through the troubleshooting steps.



TOOLS:

- [iFixit Opening Tools](#) (1)
- [Solder](#) (1)
- [Soldering Iron](#) (1)
- [64 Bit Driver Kit](#) (1)



PARTS:

- [palm zire m150 motherboard](#) (1)

Step 1 — Motherboard



- Lift up the flap on the Palm Zire M150.
- ⓘ For the purpose of this guide and being able to see clearly, we removed the flap completely. You can keep your flap on if you wish.
- If you wish to remove it, gently lift up and pull horizontally. It should come off without an issue.

Step 2



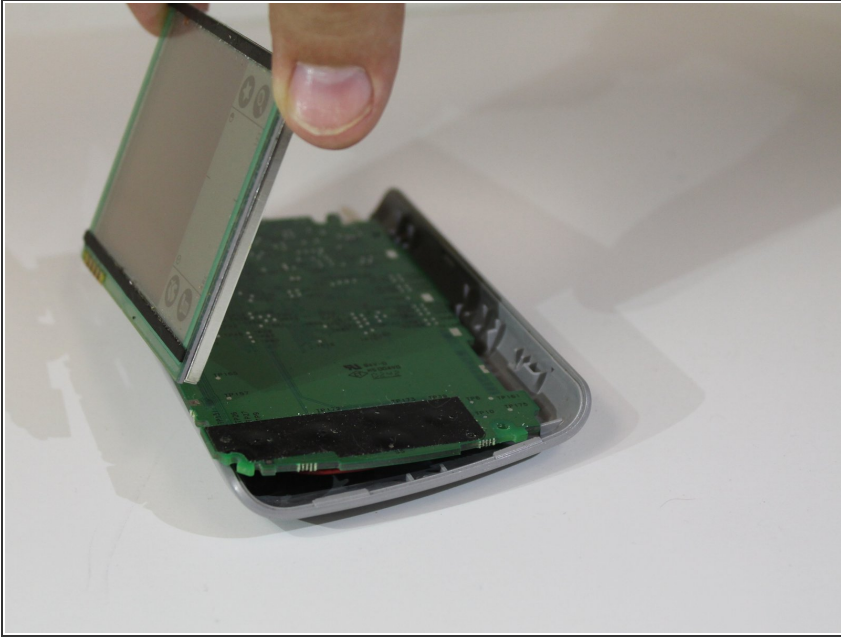
- Take the screwdriver from the iFixit toolkit and use the T6 bit. Unscrew the the top two 3mm screws above where the flap was connected to the device.

Step 3




- Gently pull the top cover off the device using both hands.

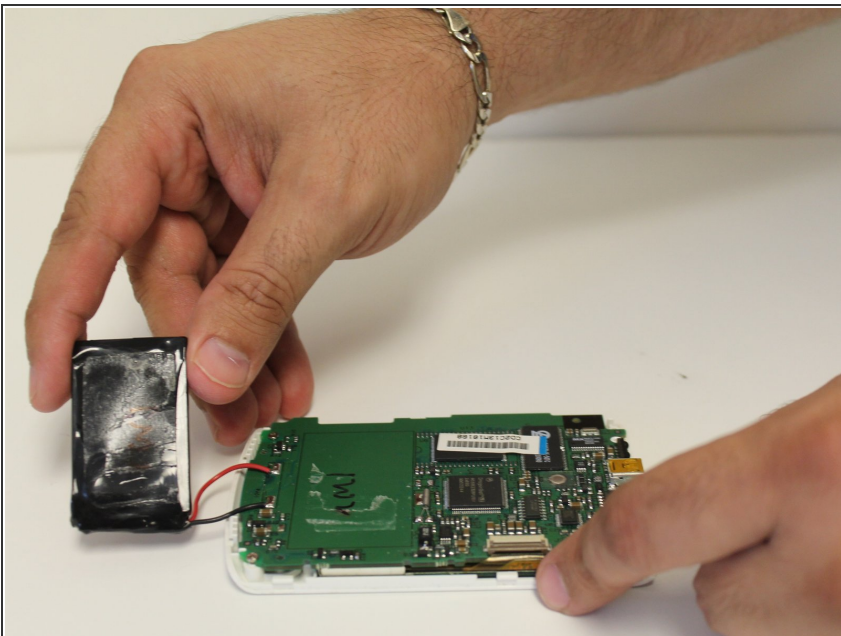
Step 4




- Remove the screen from the motherboard.

 Be careful not to break the connector that connects the screen to motherboard.

Step 5

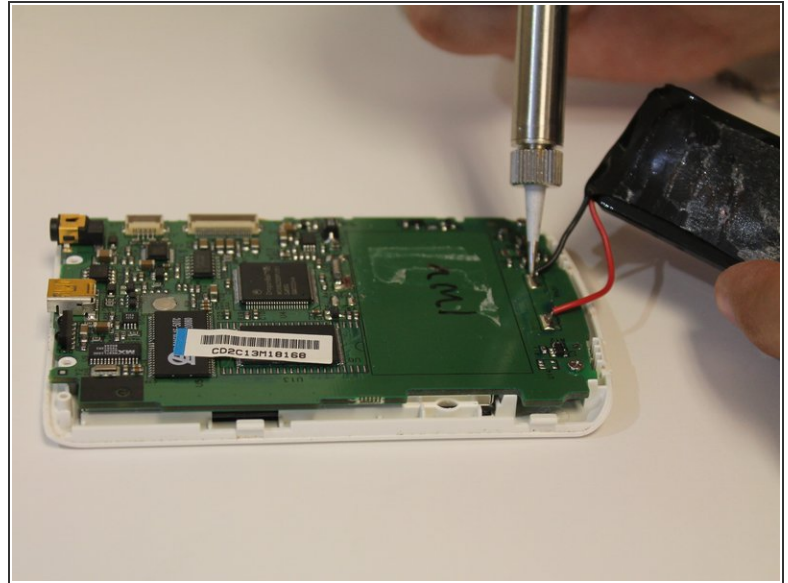
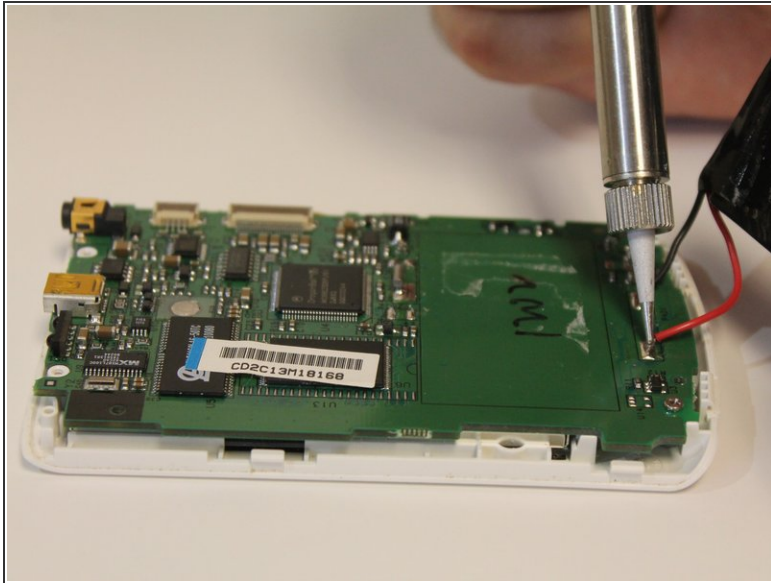


- Carefully remove the battery by prying up away from the motherboard.

 Battery is glued to motherboard.

- Remove the positive and negative terminals from the motherboard.
- Slowly remove the motherboard by lifting upward and out of the bottom case housing.

Step 6



- Insert **NEW** motherboard into the bottom case housing.
 - On the **NEW** motherboard, use a soldering iron to solder the positive and negative terminals to the new motherboard.
- ⚠ Let solder cool before reassembling unit.

To reassemble your device, follow these instructions in reverse order.