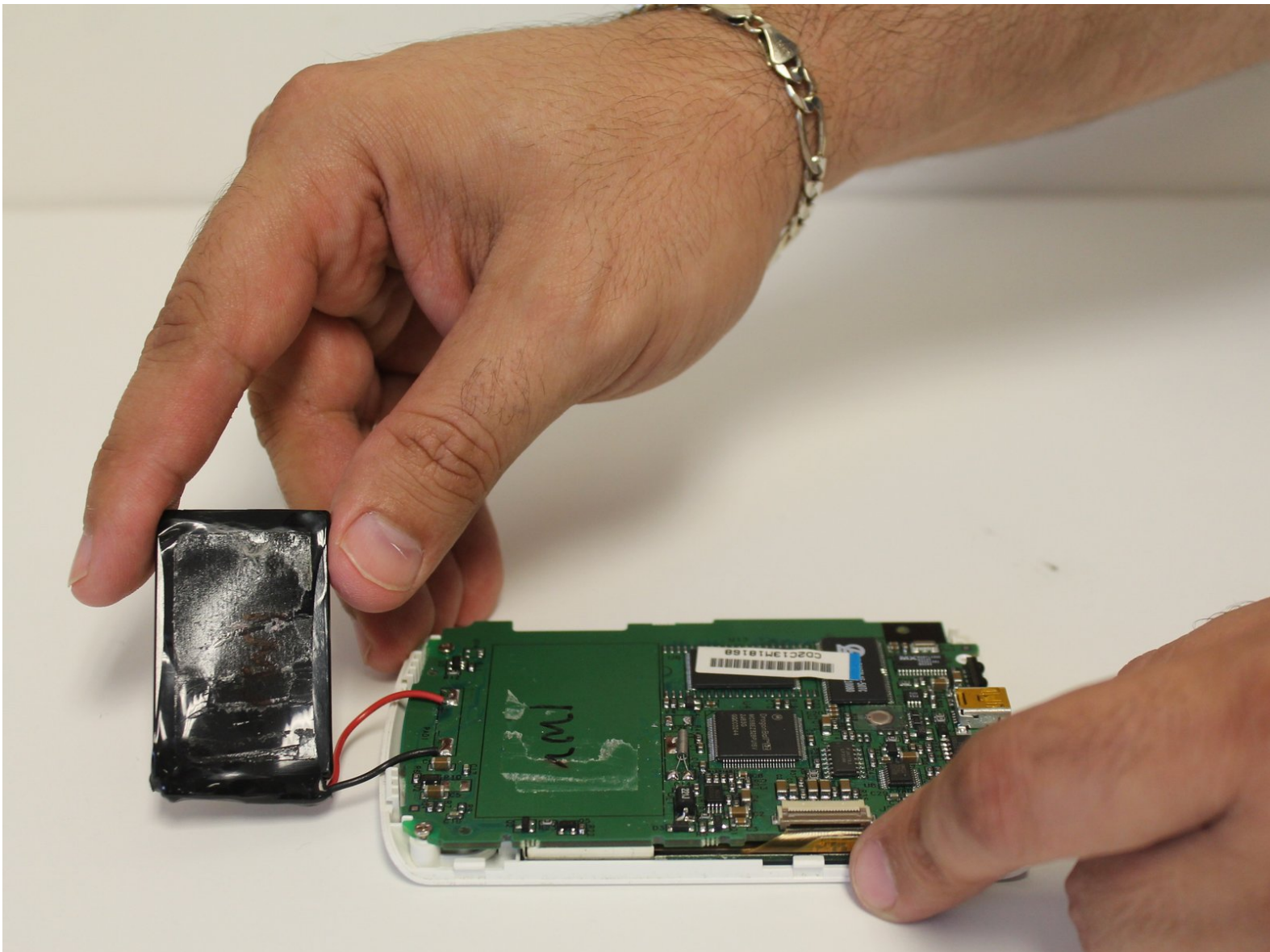




Palm Zire m150 Battery Replacement

Give a short summary.

Written By: Kate



INTRODUCTION

If battery is faulty or needs replacement, follow these simple steps to replace.



TOOLS:

- [Soldering Iron](#) (1)
 - [64 Bit Driver Kit](#) (1)
-

Step 1 — Battery



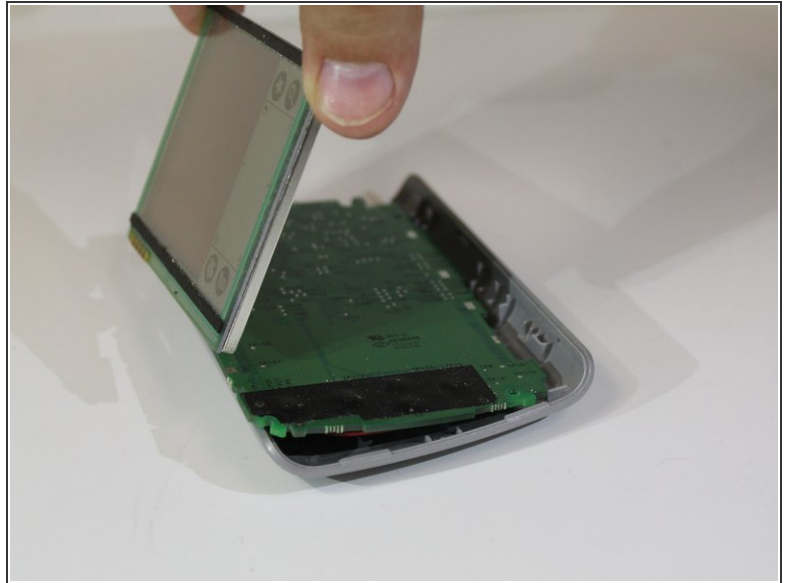
- To begin, gently pull on the flap to remove.

Step 2



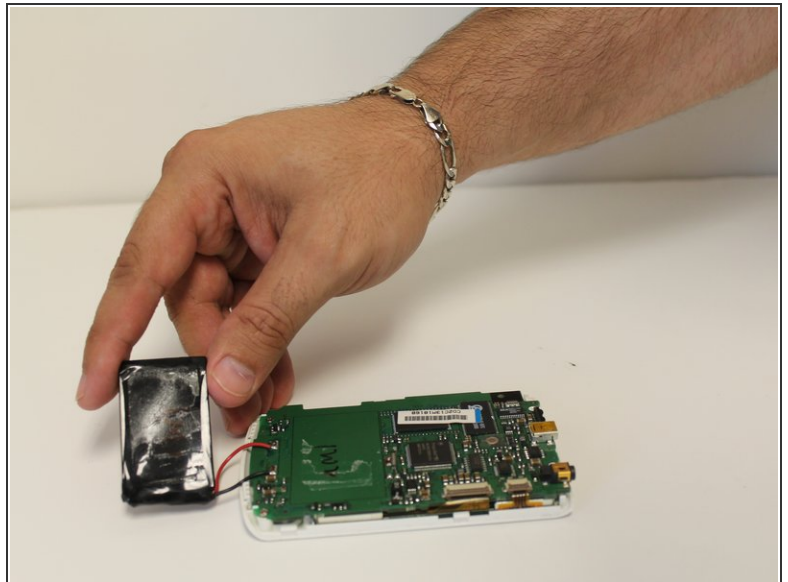
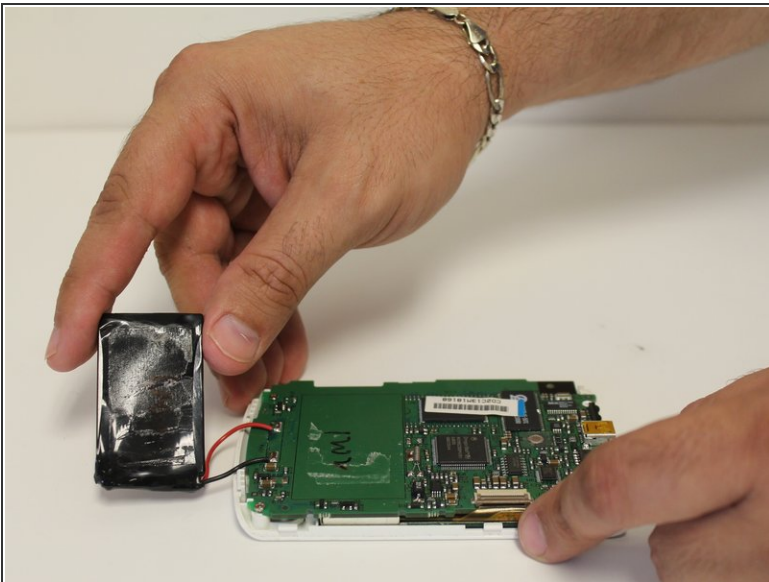
- Use T6 bit of screwdriver provided in the iFixit toolkit. Unscrew the two screws at the top of the device.

Step 3



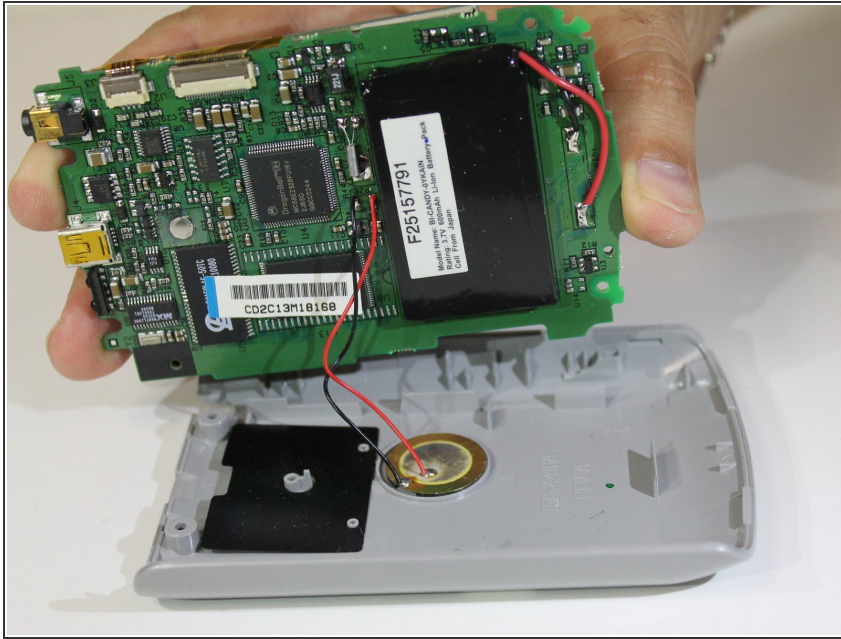
- Carefully remove the back panel of the device.

Step 4



- Gently remove the battery from the phone.

Step 5



- Insert new battery where old battery was.
- To reassemble your device, follow these steps in reverse order

To reassemble your device, follow these instructions in reverse order.