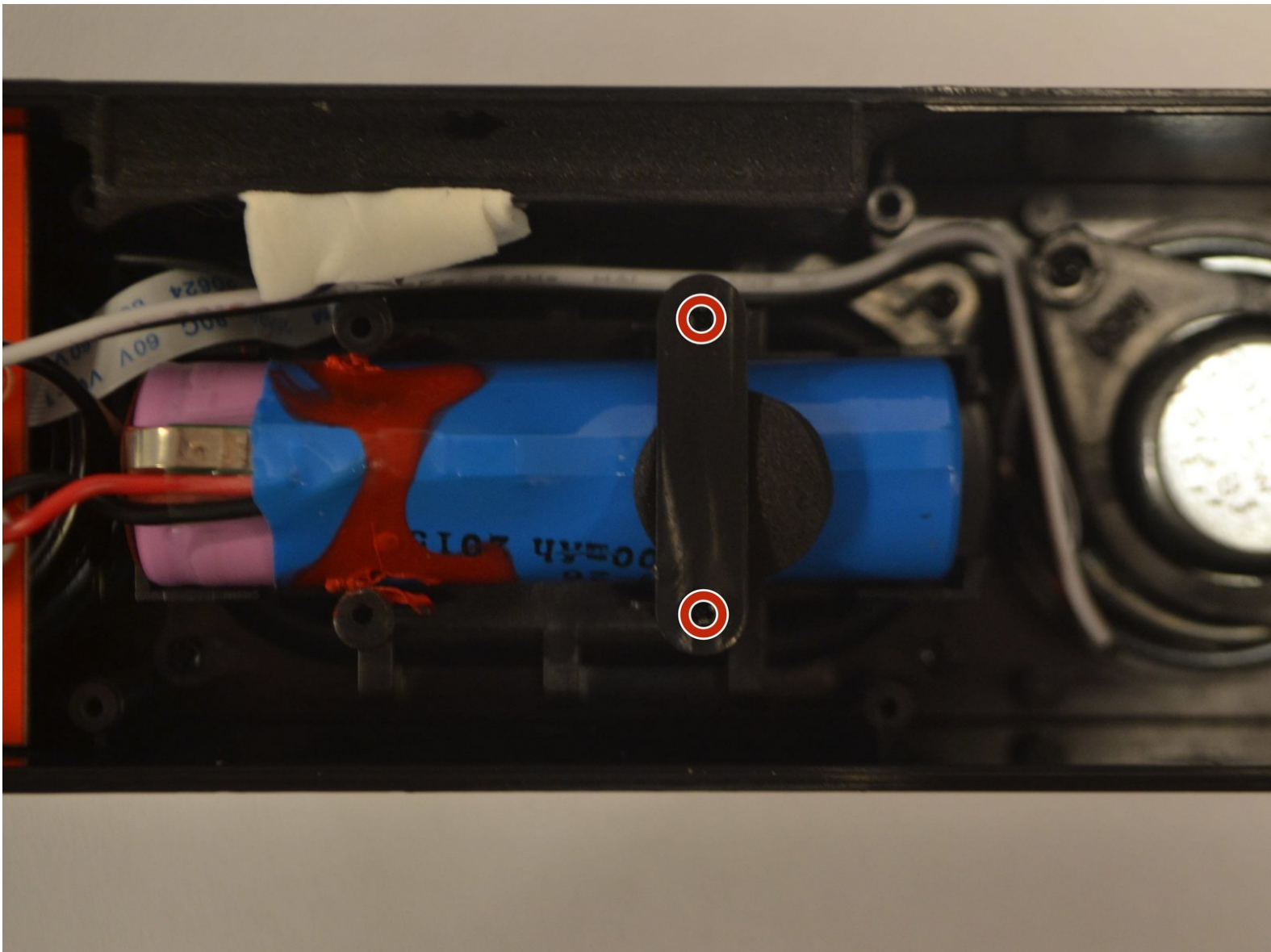




# Photive Hydra Battery Replacement

"Prerequisite Guide Only"

Written By: Matthew Knight



## INTRODUCTION

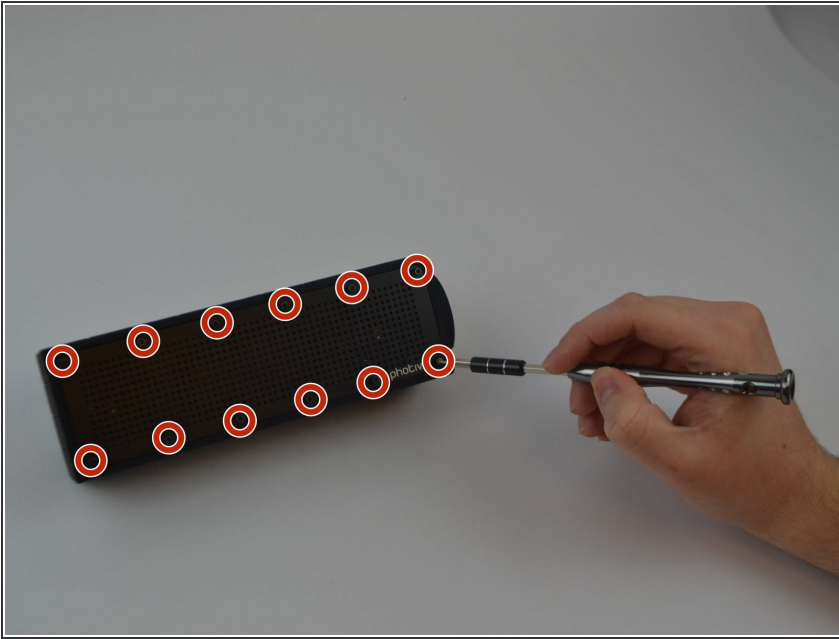
If the battery for your Photive Hydra is not holding a charge, or if it does not charge at all, it may need to be replaced. If you plan on replacing the battery you will need a replacement battery on hand. The battery that this device uses is a ICR18650 -26H.



### TOOLS:

- [Phillips #1 Screwdriver](#) (1)
  - [iFixit Opening Tools](#) (1)
  - [1.5mm Hex Screwdriver](#) (1)
  - [Soldering Iron](#) (1)
-

## Step 1 — Face Plate and Back Plate



- Unscrew all twelve Hex Head 1.5 (Length-3/8", Head- 1/8") screws using a 1.5mm hex screwdriver.

## Step 2



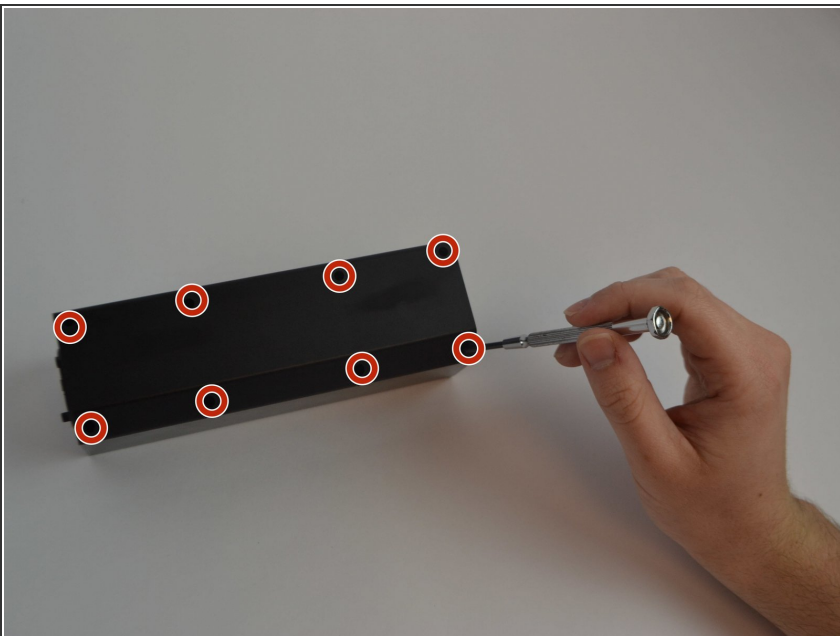
- Use a plastic opening tool to pry off the face plate.

### Step 3



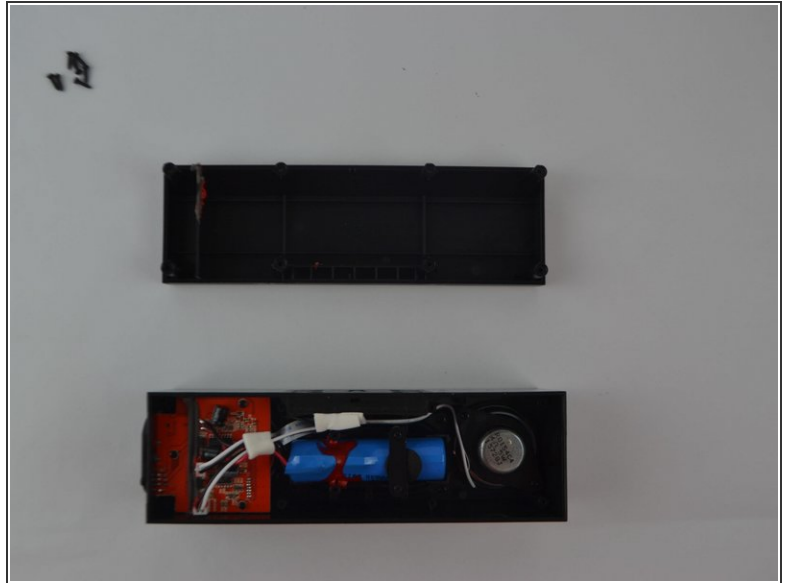
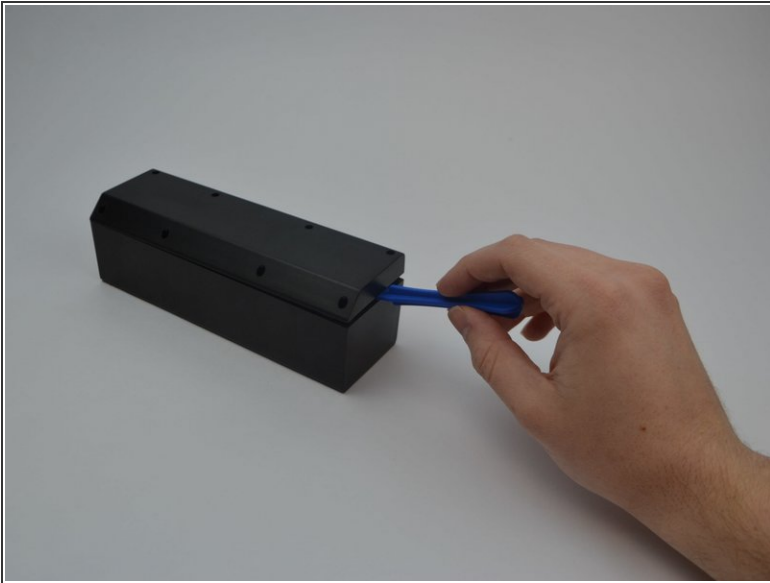
- Remove the rubber casing by using your fingers to pull off. Be sure not to tear or rip the rubber casing.

### Step 4




- Flip the device upside down and remove all eight Phillips (Length-3/8", Head-1/8") screws using a standard #1 Phillips screwdriver.

## Step 5

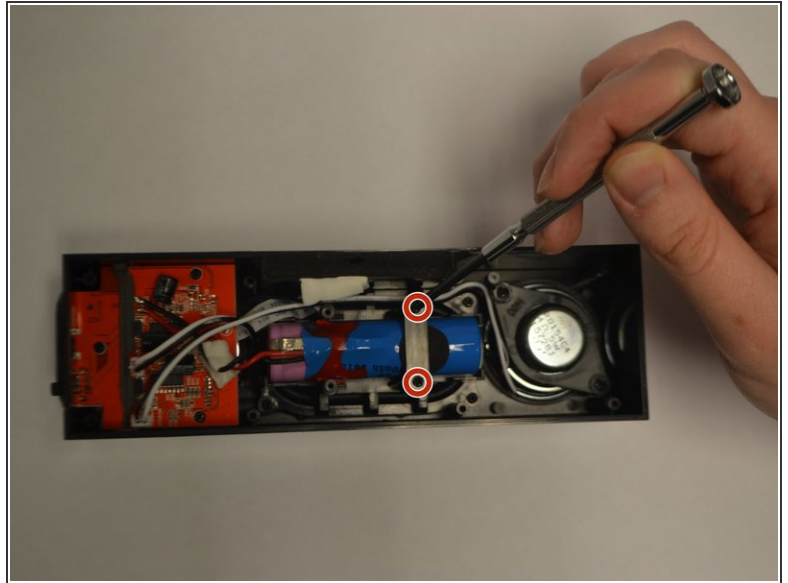
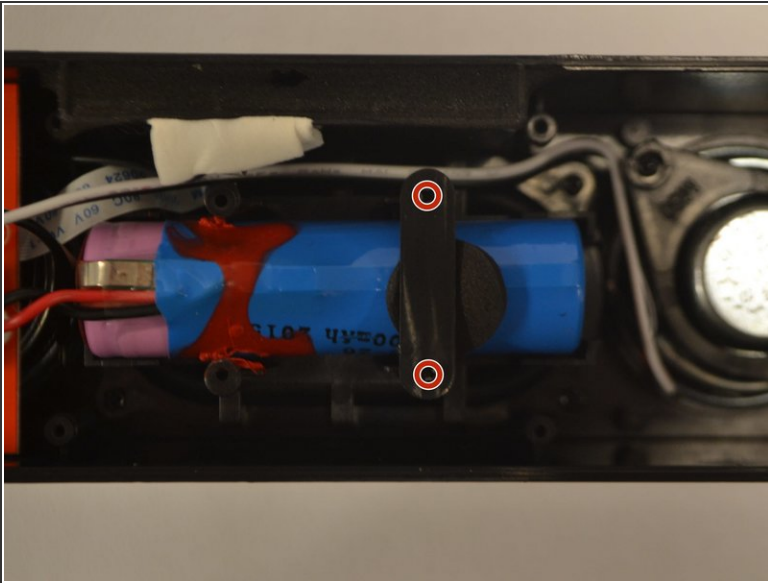


- Use plastic opening tool to pry off back plate.
- Move the plastic opening tool along the the device to further pry open the device.

 Be careful when taking this plate off. You may accidentally damage the water proof seal.

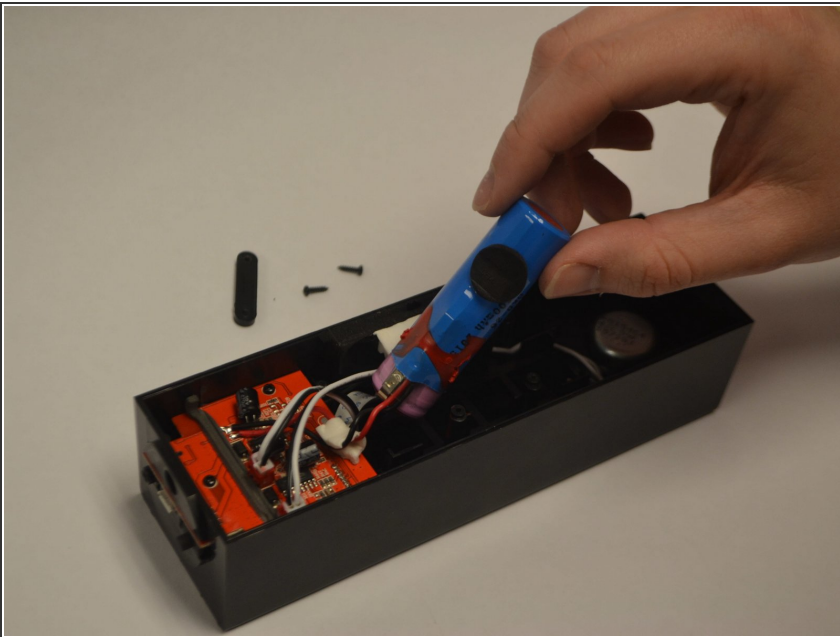


## Step 6 — Battery (Prerequisite)



- Identify the two Phillips (Length-5/16", Head-1/8") screws holding the battery in place and remove them using a #1 screwdriver.

## Step 7



- Remove the ICR18650-26M battery from its position by pulling upwards and out of the casing.

To reassemble your device, follow these instructions in reverse order.

This document was generated on 2020-11-22 05:04:30 AM (MST).

