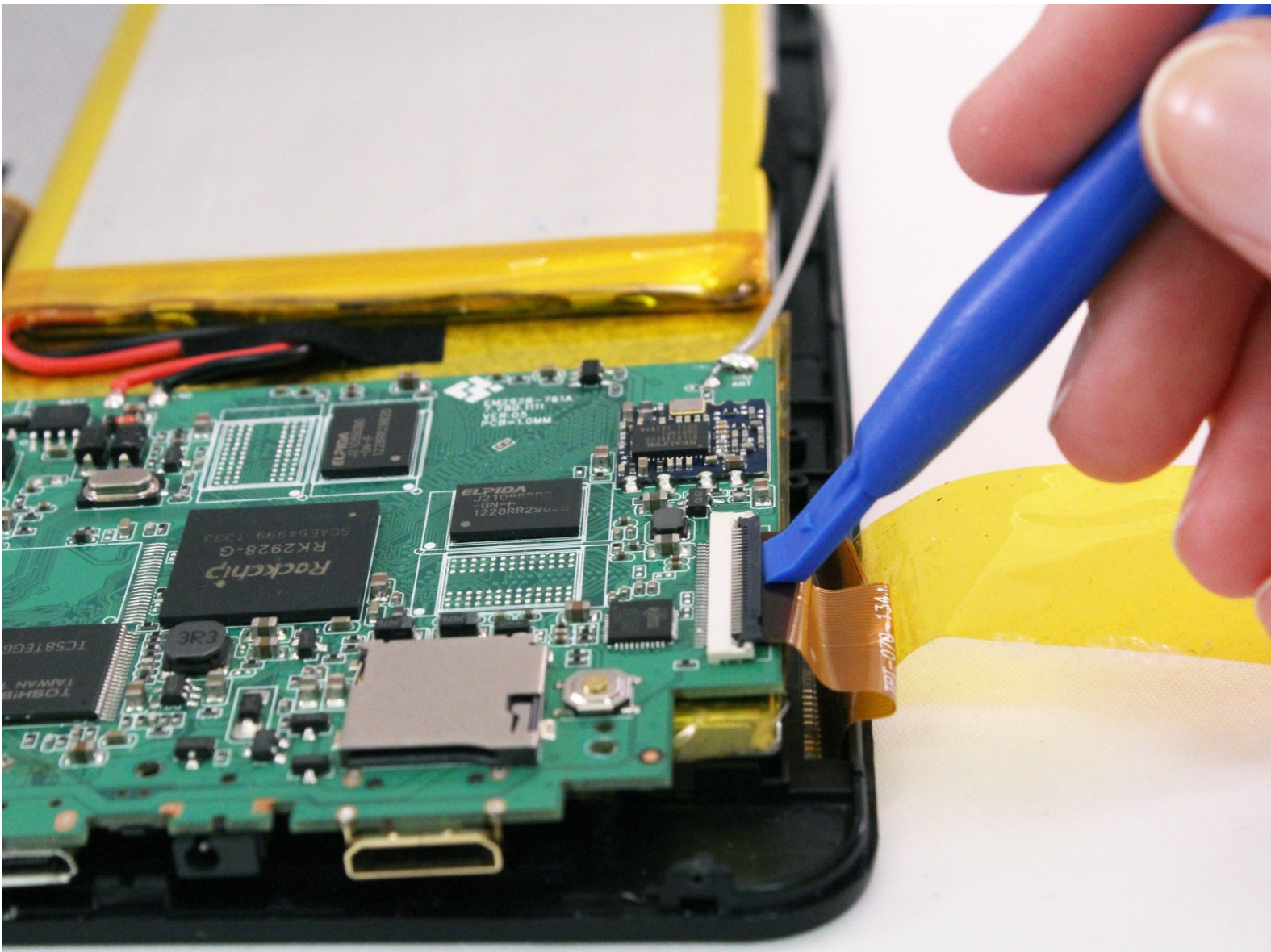




ProScan PLT7223G Motherboard Replacement

You will able to replace your tablet's faulty motherboard.

Written By: Daniel Hernandez



INTRODUCTION

If your device isn't working and other troubleshooting methods have failed, or a component of the motherboard has failed, use this guide to replace the motherboard and make your device functional again.



TOOLS:

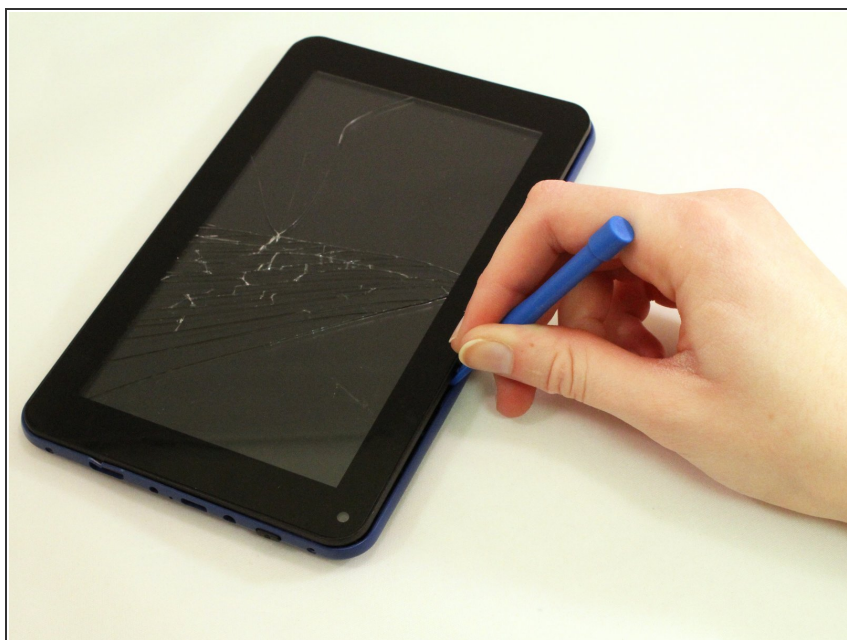
- [Phillips #00 Screwdriver](#) (1)
 - [iFixit Opening Tools](#) (1)
 - [Soldering Iron](#) (1)
-

Step 1 — Motherboard



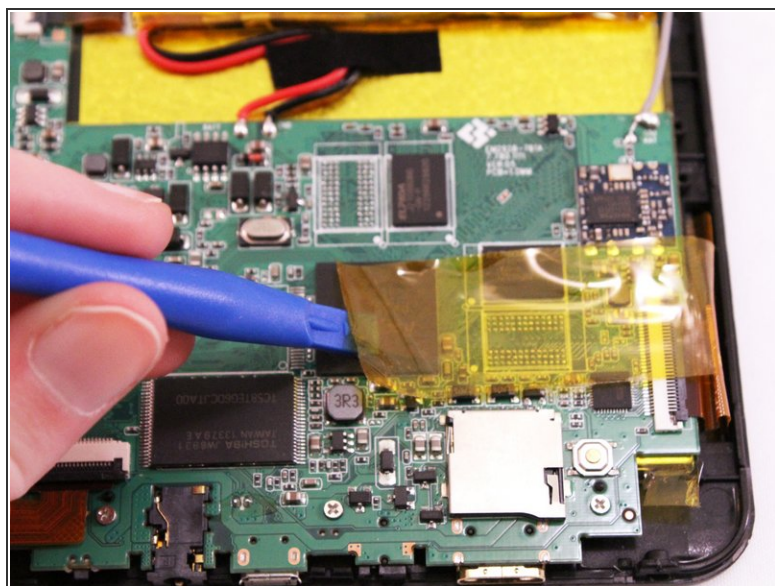
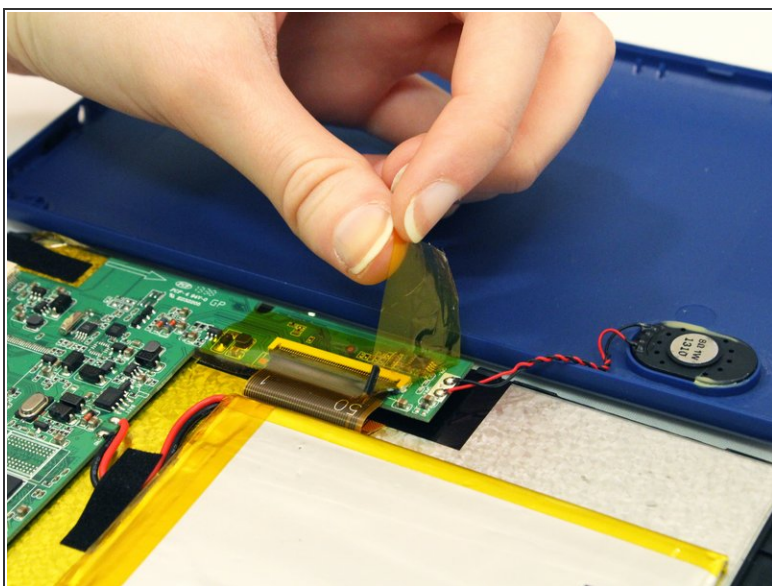
- Remove both 4 mm screws from the top of the tablet using a PH00 screw driver.

Step 2



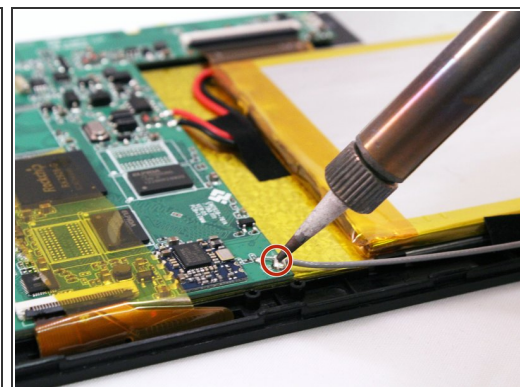
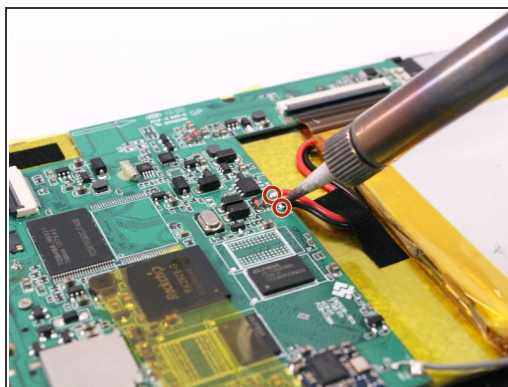
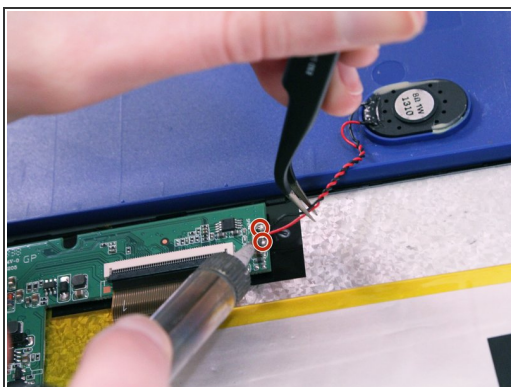
- Use the blue opening tool to pry the tablet open.

Step 3



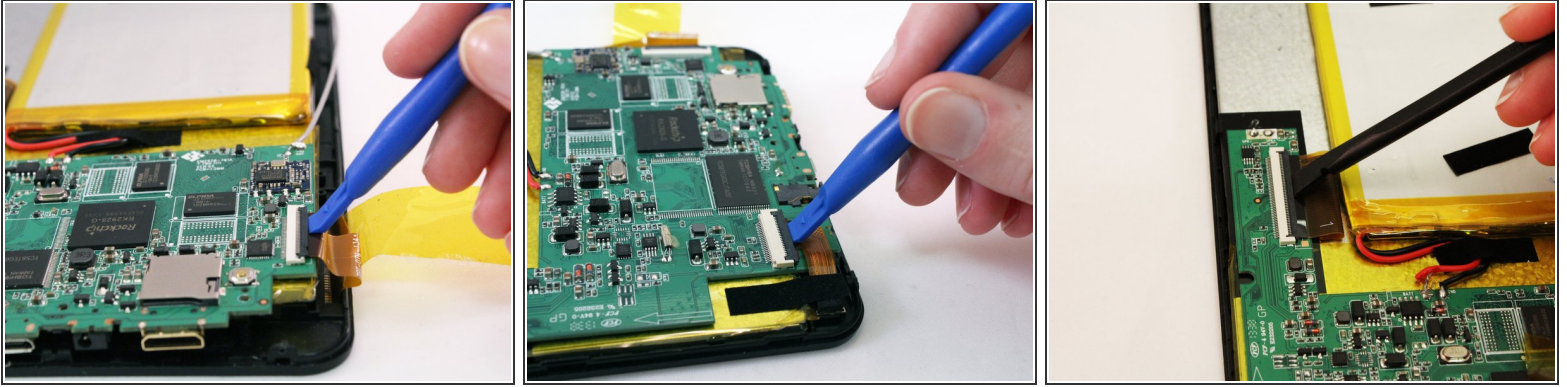
- Remove all yellow tape from the motherboard.

Step 4



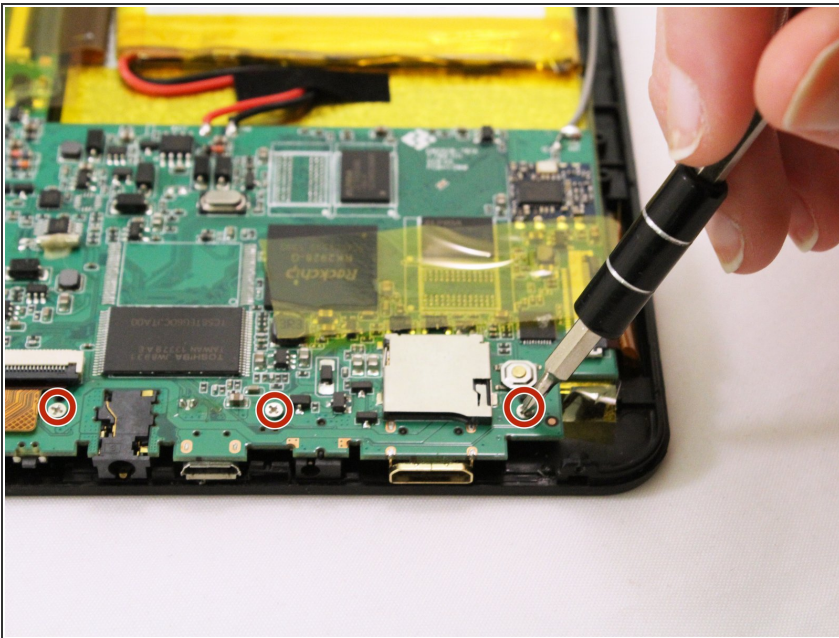
- With the soldering tool remove the speaker wires, battery wires and gray wire that are connected to the motherboard.
- ⓘ Pay close attention to where each wire goes, so that you reconnect them in the correct order.

Step 5



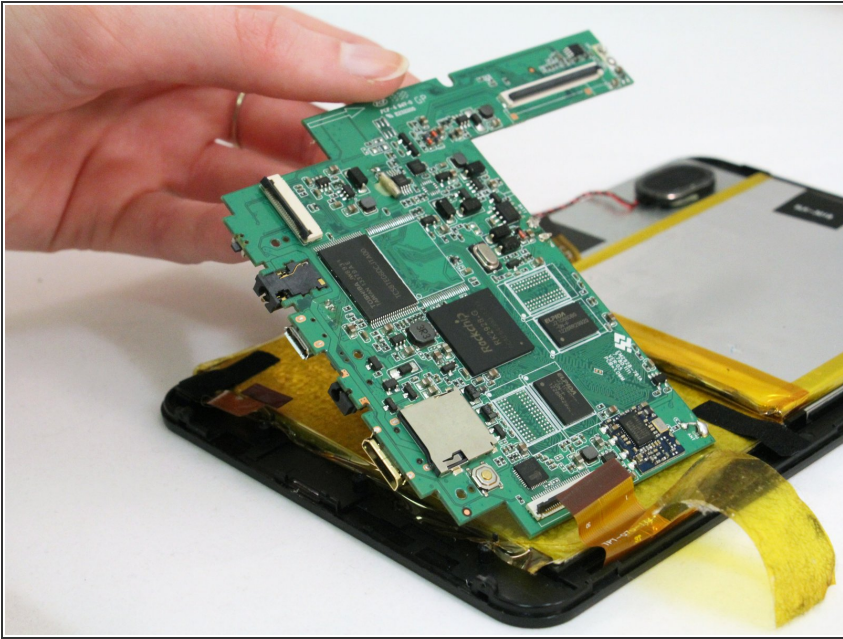
- Lift all three ZIF connectors to disconnect the ribbon wire.

Step 6



- Use a PH00 screw driver to remove the three 4 mm screws holding the motherboard down.

Step 7



- Lift the motherboard off the device.

To reassemble your device, follow these instructions in reverse order.