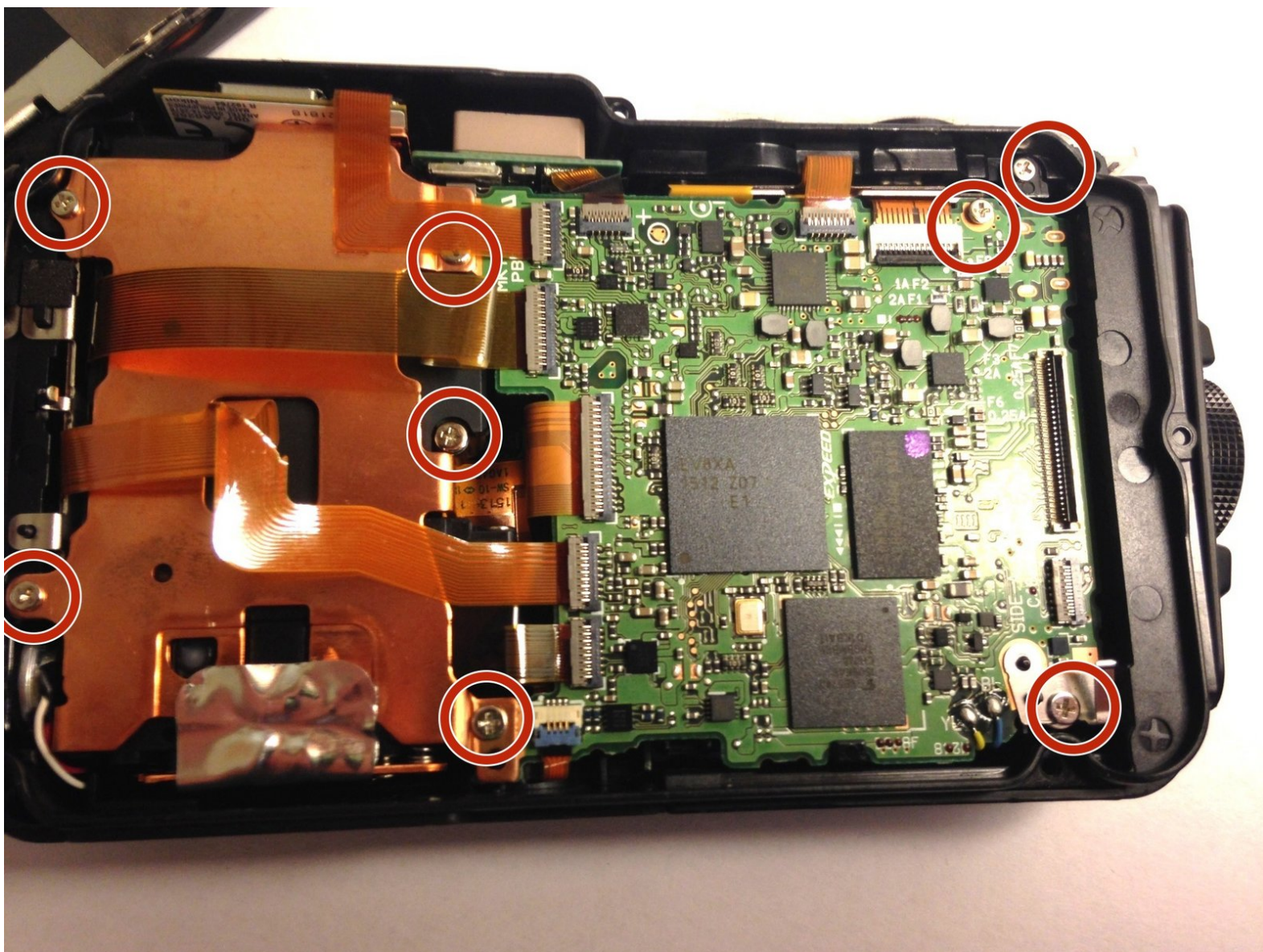




# Nikon Coolpix AW130 Motherboard Replacement

If your camera fails to turn on, despite a previous battery replacement and continual charging, it may be in need of a motherboard replacement.

Written By: Lauren Stepp



## INTRODUCTION

The motherboard is the key component to making the camera run. If there is a faulty connection, the camera will not turn on at all. This repair should be completed with care, as to not interrupt the flow of power.



### TOOLS:

- [Phillips #000 Screwdriver](#) (1)
  - [Metal Spudger](#) (1)
  - [Soldering Iron](#) (1)
-

## Step 1 — Battery



- Using your thumb and pointer finger, open the card/battery hatch by pressing the center button of the wheel and turning the entire wheel to the left.

☑ When reassembling, you must turn this wheel to the right until it clicks.

## Step 2



- You should feel the door begin to loosen. Carefully pull the hatch open.



### Step 3



- Push the yellow battery/charger compartment tab up using your thumb nail.

### Step 4



- After pressing the yellow tab, the battery should loosen.
- Slowly pull the battery completely out.

## Step 5 — Front Panel



- Using the T4 Torx Screwdriver, remove the 2, 4mm screws holding the N-Mark plate in place.
- Carefully pull the plate off of the face.

## Step 6

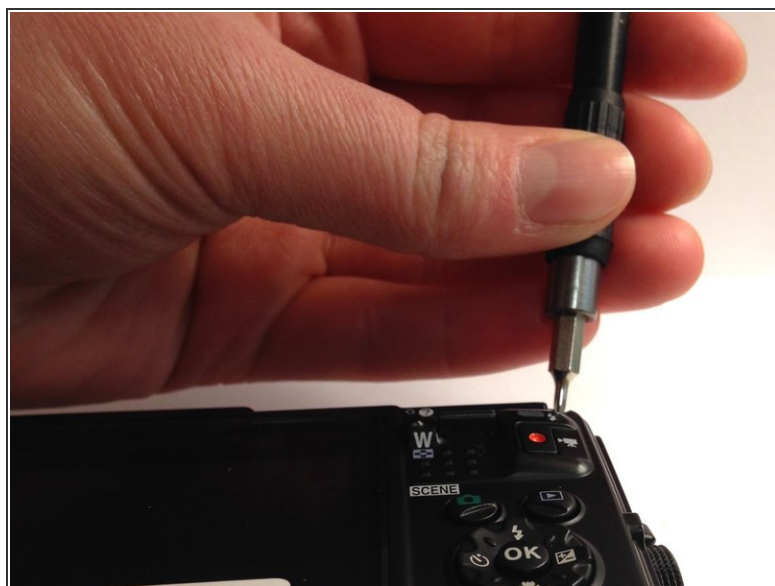


- Using the metal spudger tool, pry the colored face from the camera body.

⚠ Avoid bending or scratching the front face.



## Step 7 — Back Panel



- Using the T5 Torx screwdriver, remove all four 4mm screws.

## Step 8



- Using a Phillips #000 screwdriver, remove the single 3mm screw found inside the battery/charging compartment.

## Step 9



- Remove the upper cover (connected by glue) and unscrew the single Philips screw.

## Step 10



- Remove two Philips screws from the bottom cover, lift gently the cover and remove the single Philips screw under it.

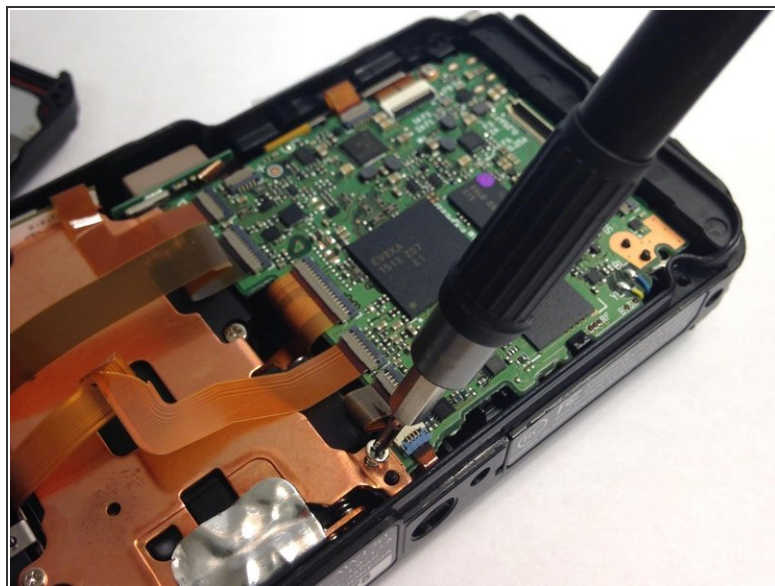
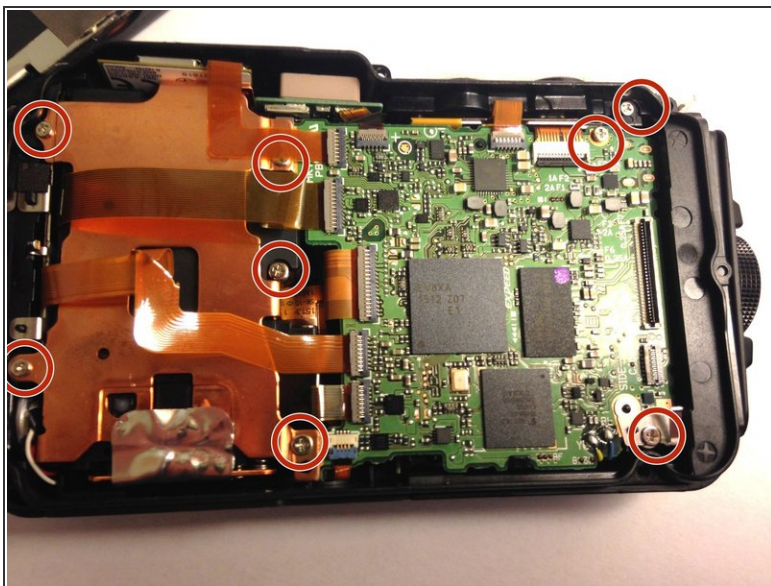


## Step 11



- Carefully remove the back cover from the camera body.

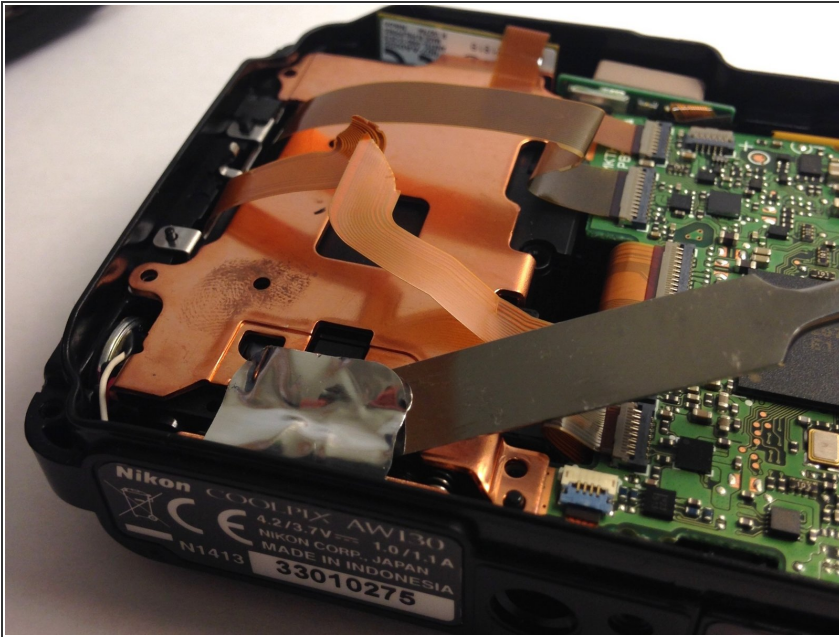
## Step 12 — Motherboard



- Using a Phillips #000 screwdriver, remove all 8, 4mm screws on the motherboard.

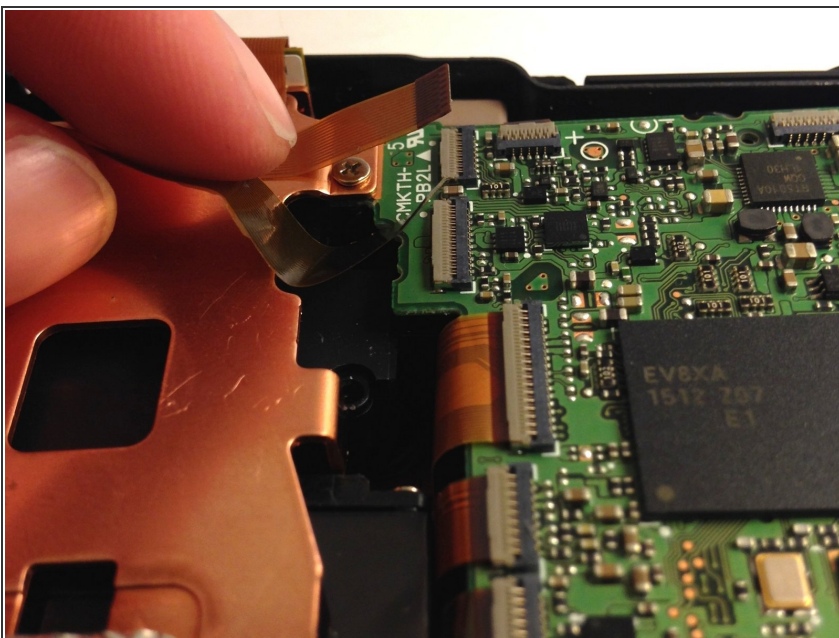


## Step 13



- Using the nylon spudger tool, peel back the metallic plate.
- ⓘ A metal spudger is shown in the photo, but a nylon spudger should be used.
- ⚠ Do not rip the gold-colored ribbons.

## Step 14



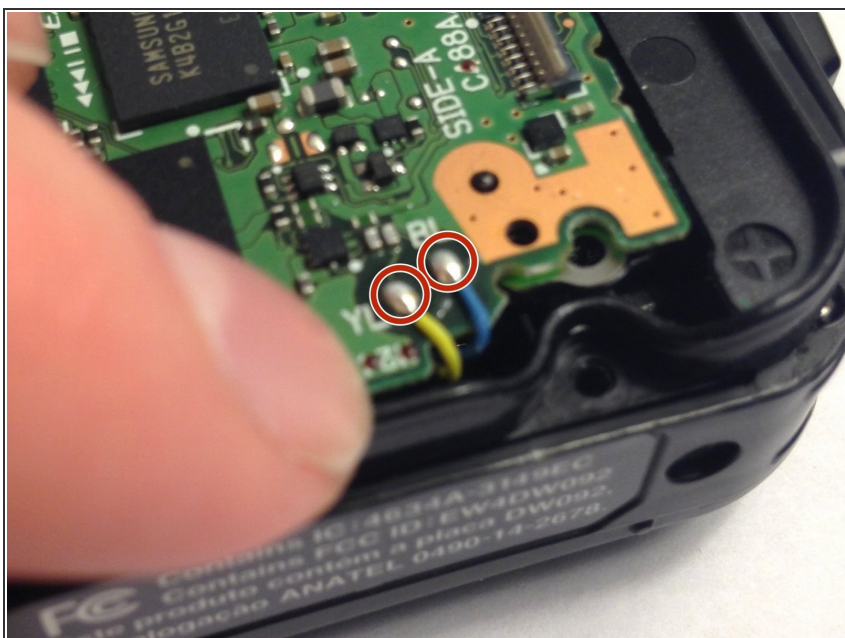
- Using your fingers, carefully disconnect the connector ribbons.
- ⚠ Though various guides suggest using a plastic or metal spudger tool to disconnect the ribbons, this tool is liable to damage the connectors.

## Step 15



- Carefully remove the black piece on the lefthand side.

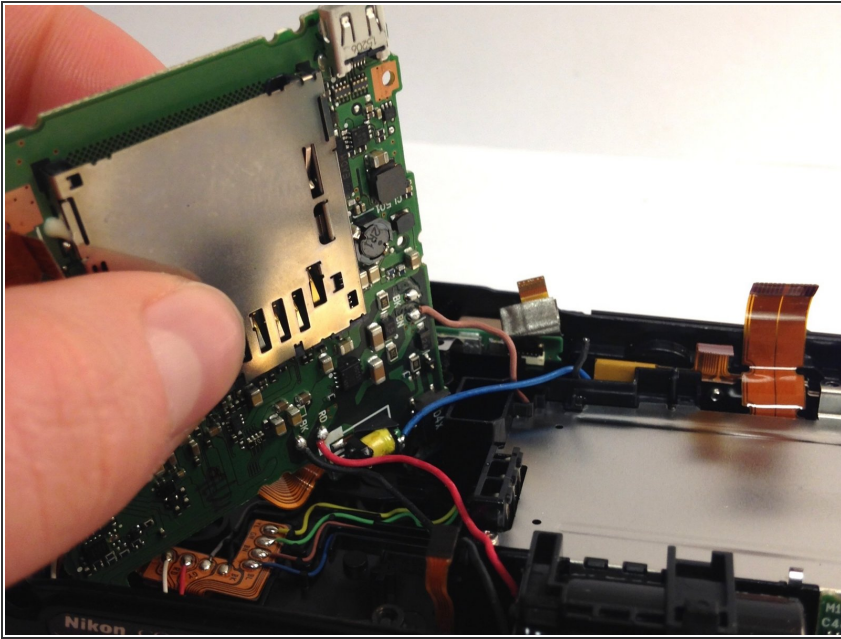
## Step 16



- On the remaining piece, desolder the labeled soldering points.
- ⚠ The soldering tool can get extremely hot. For soldering help, check out iFixit's guide for [How to Solder and Desolder Connections](#).

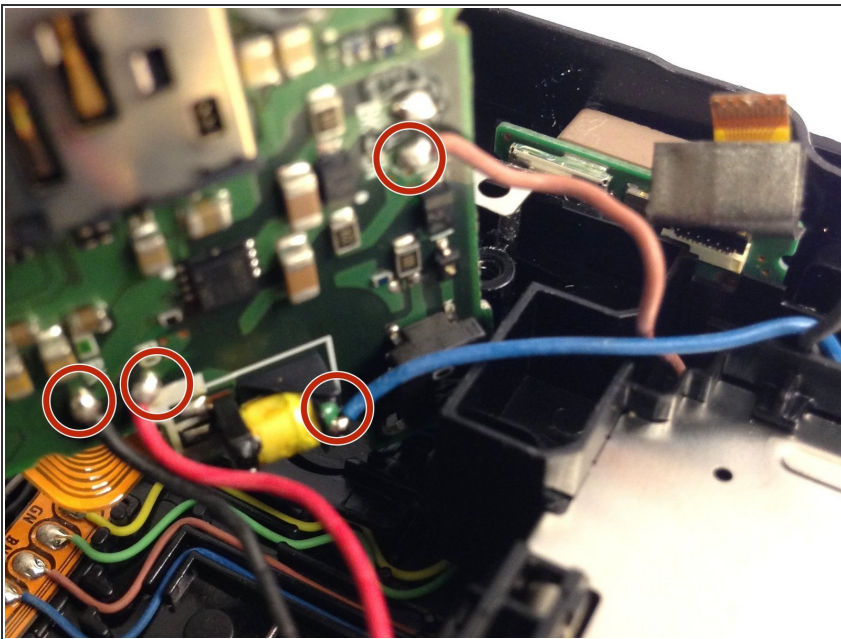


## Step 17



- Flip the remaining piece over, careful not to rip any of the connecting wires.

## Step 18



- Desolder at the prescribed sites.
  - Remove the motherboard from the camera body.
- ⚠ The soldering tool can get extremely hot.

To reassemble your device, follow these instructions in reverse order.