



# Fujifilm X-M1 Disassembly

This guide gives you a look at the major...

Written By: Kelsea Weber



# INTRODUCTION

This guide gives you a look at the major components of the Fujifilm X-M1 and provides complete disassembly instructions.

We highly suggest you use a [magnetic project mat](#) or an organization tray. This camera has **many** different types of screws and keeping them organized is key to proper reassembly.

---

## 🔧 TOOLS:

[Phillips #00 Screwdriver](#) (1)

[Tweezers](#) (1)

[iFixit Opening Tool](#) (1)

[Spudger](#) (1)

[Magnetic Project Mat](#) (1)

---

## Step 1 — Fujifilm X-M1 Disassembly



- If you haven't done so already, remove the lens from the camera.
- Remove the six 2.5 mm Phillips screws from the bottom of the camera.

## Step 2



- Use [tweezers](#) or a finger nail to peel back the rubber cover on the left handgrip.
- Remove the 3.4 mm Phillips screw.
- Remove the 3.7 mm screw.

## Step 3



- Use tweezers or a fingernail to peel back the rubber cover on the right handgrip.
- Remove the 3.2 mm Phillips screw.
- Remove the 3.8 mm Phillips screw.
- Remove the 2.8 mm Phillips screw.

## Step 4



- Remove the six 6.5 mm Phillips screws from the lens mount.
- Use tweezers to remove the top metal ring and the thin metal ring below it .

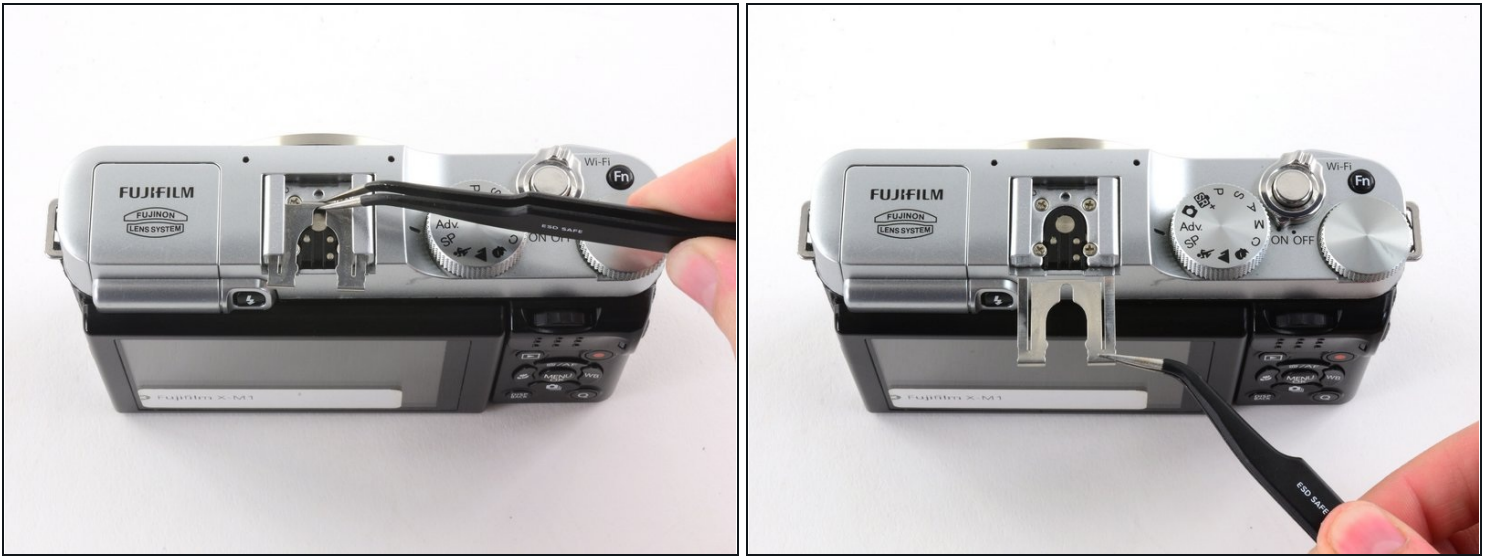
## Step 5



- Remove the four 4.3 mm screws securing the sensor to the front case.



## Step 6



- Use tweezers to slide the metal shield straight out of the external flash mount.

## Step 7



- Remove the four 4.6 mm Phillips screws from the external flash mount.
- Use tweezers or two fingers to remove the mount clip.

## Step 8



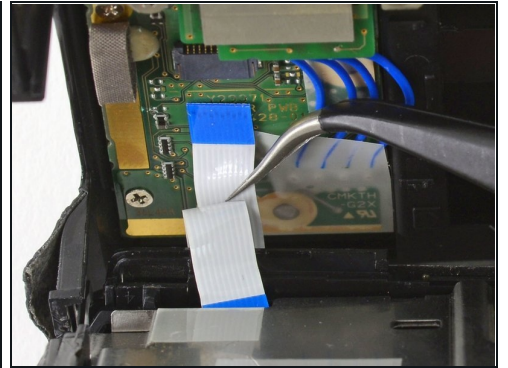
- Extend the LCD.
- Remove the two black 4.3 mm Phillips screws from the back case.

## Step 9



- Use two fingers to peel back and remove the black plastic cover from behind the LCD.

## Step 10



- Slowly pull the back frame away from the camera.

⚠ Do not attempt to remove the frame, as it is attached to the camera by a ribbon cable.

- Use tweezers to pull the white and blue ribbon cable out of the connector.

## Step 11



- Slide the frame around the LCD to remove it from the camera.

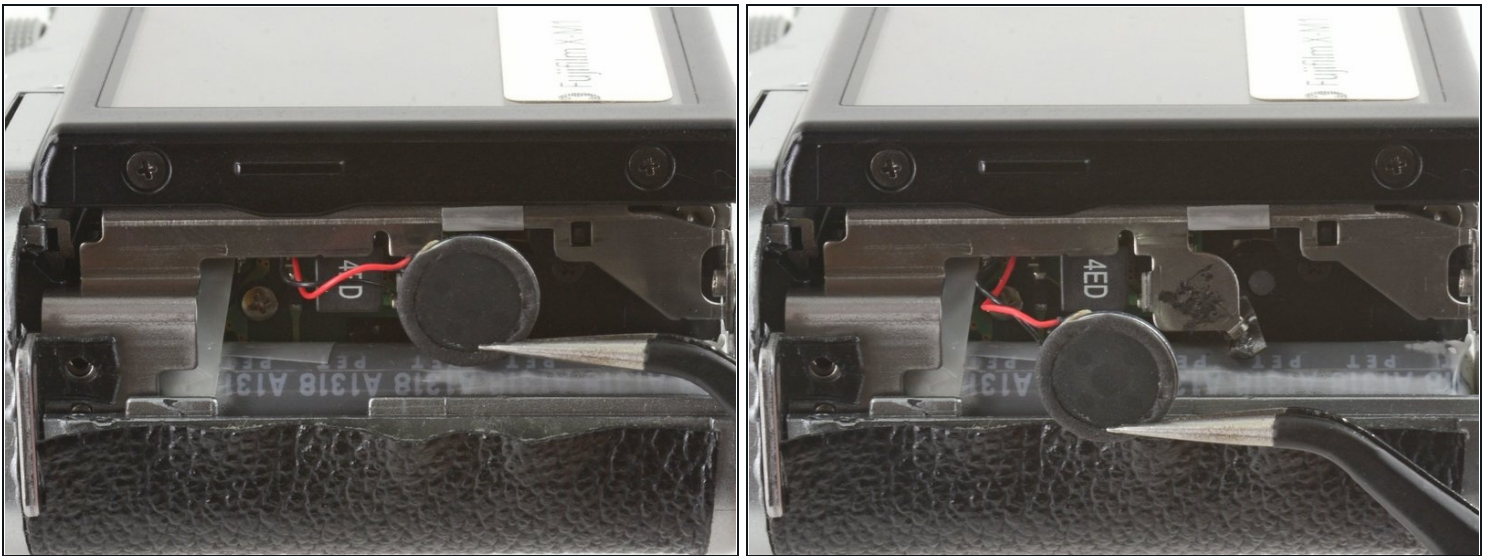


## Step 12



- Remove the two 2.6 mm Phillips screws from the right side of the metal frame.

## Step 13



- Use tweezers to unhook the speaker near the left handgrip.



## Step 14

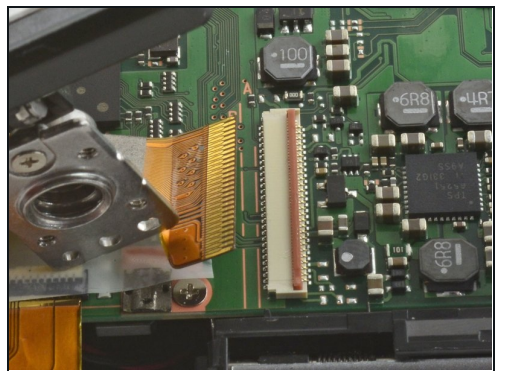
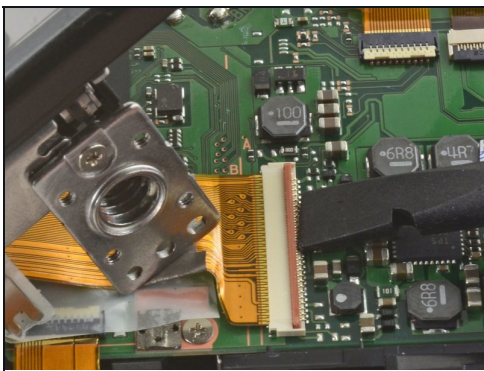
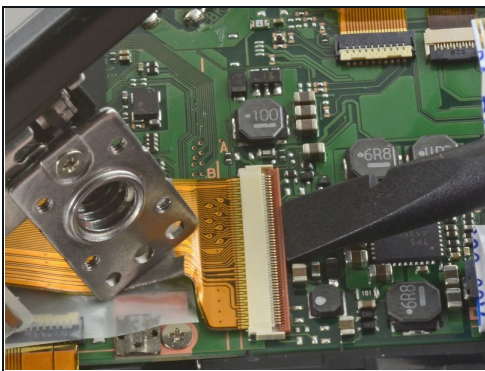


- Slowly lift the metal frame away from the motherboard.

⚠ Do not attempt to remove the frame, as it is attached to the motherboard by a large ribbon cable.

- Use tweezers to remove the plastic covering the motherboard.

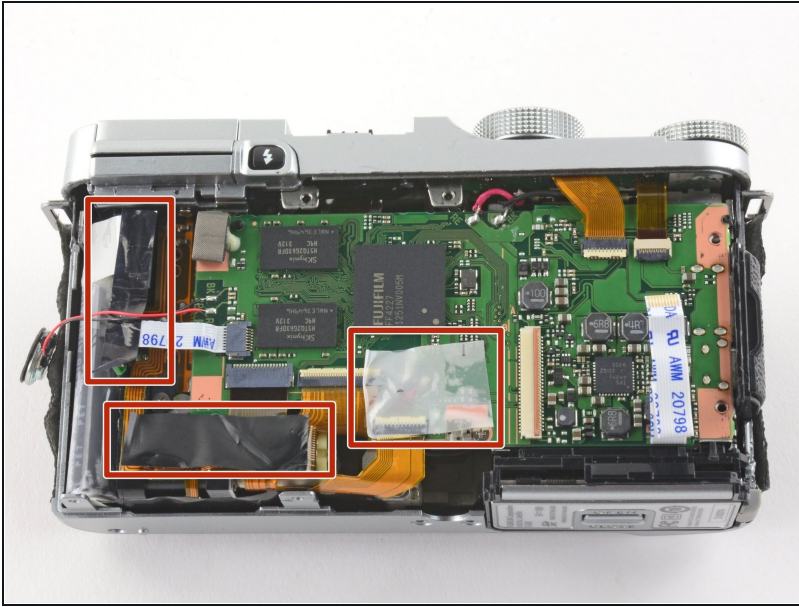
## Step 15



- To remove the ribbon cable, flip back the orange lock on the large ZIF connector with the flat end of a spudger.

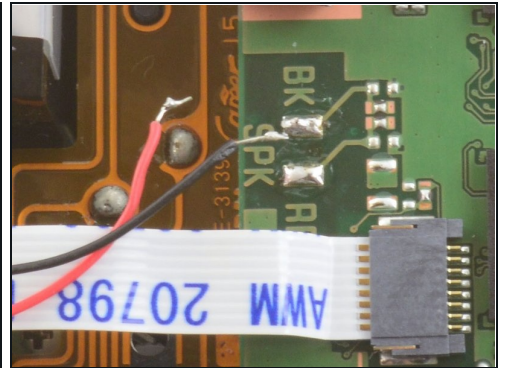
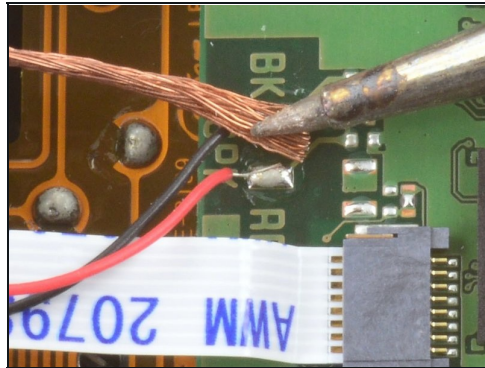
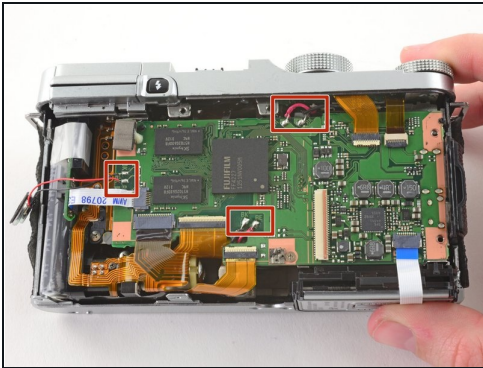
ⓘ If the ribbon cable does not pop out on its own, use tweezers to pull it out of the connector.

## Step 16



- Use tweezers to remove the three pieces of tape covering the components of the motherboard.

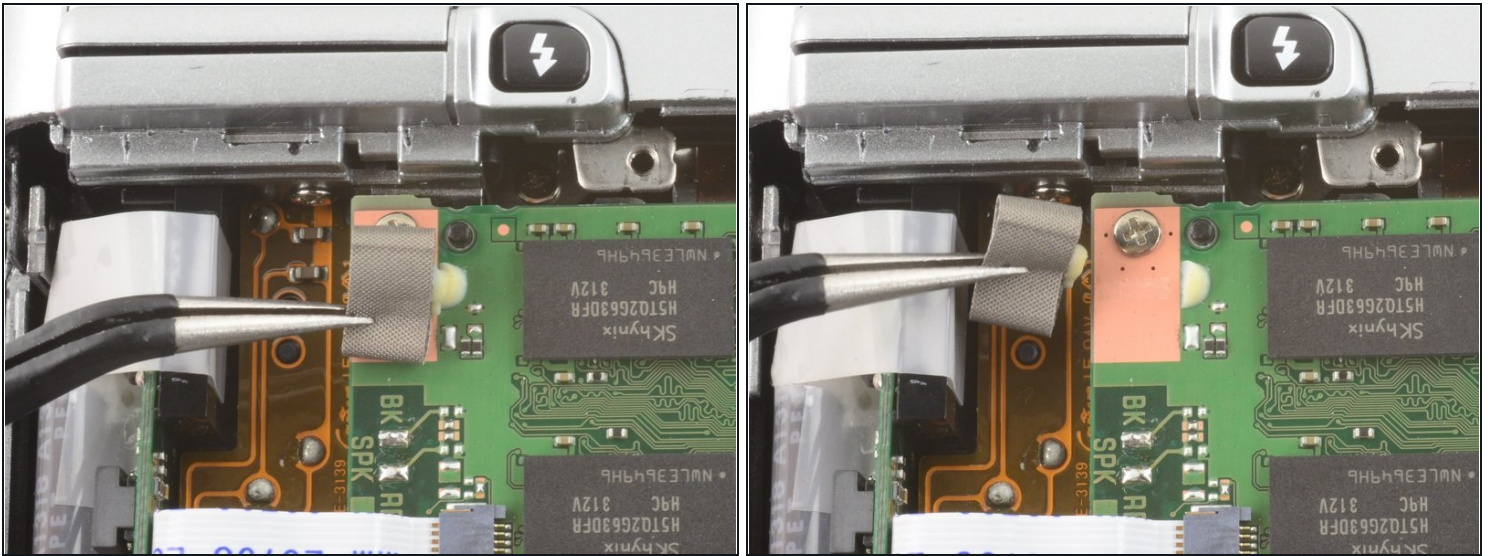
## Step 17



- Desolder the three pairs of red and black wires attached to the mother board.
- Learn more about desoldering wires [here](#).



## Step 18



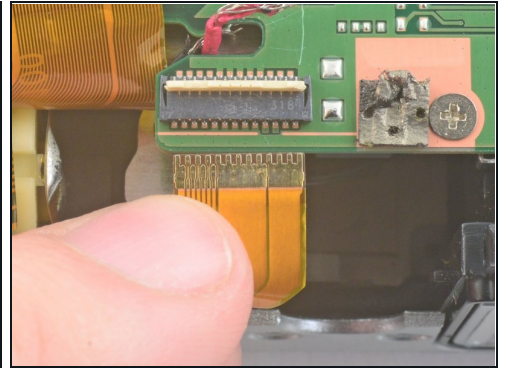
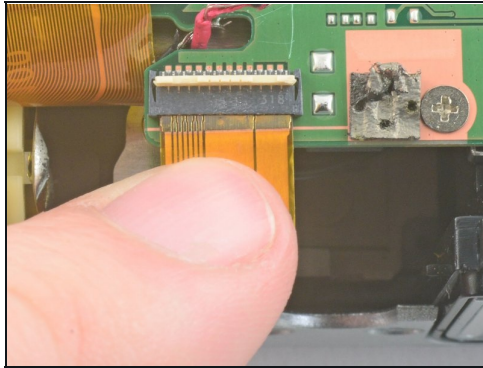
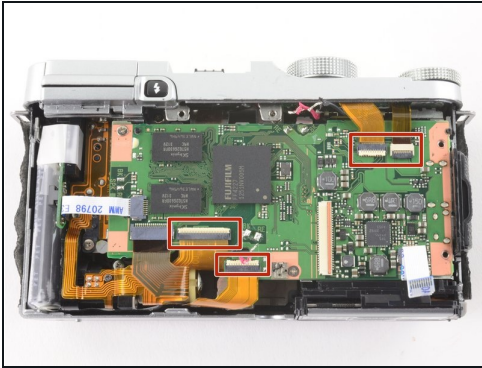
- Use tweezers to remove the grey cushion located below the flash button.

## Step 19



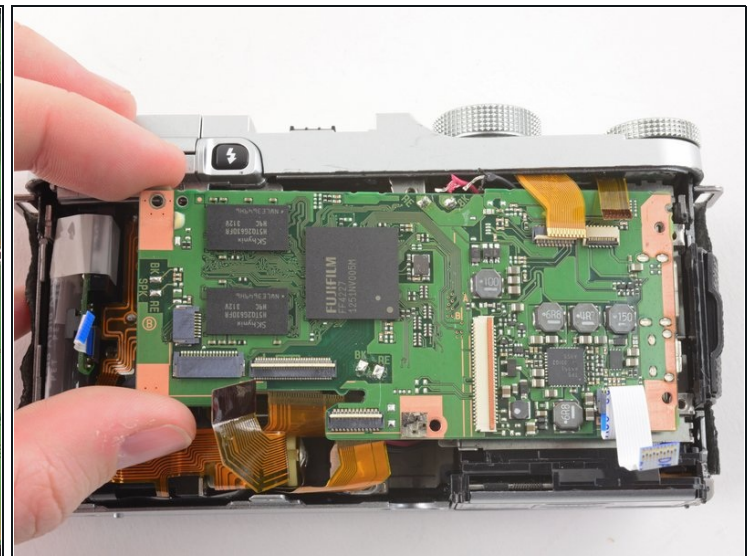
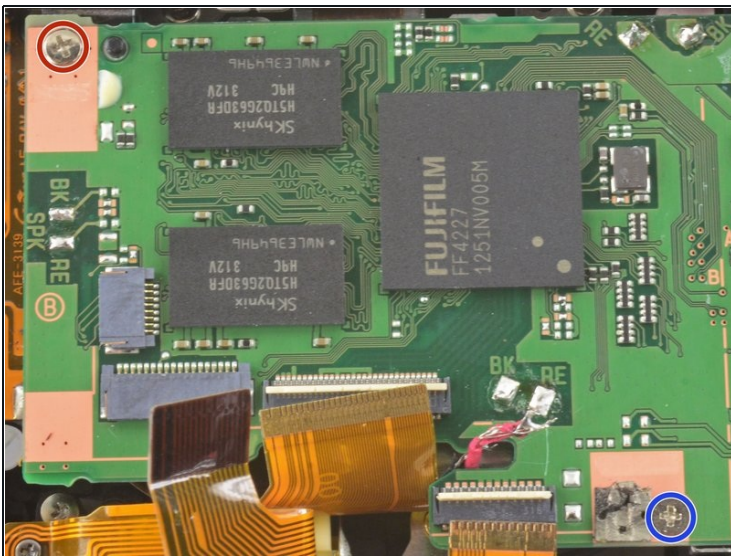
- Use two fingers to remove the two ribbon cables in the bottom left corner of the motherboard.

## Step 20



- Use the flat end of a spudger to unlock the four indicated ZIF connectors.
- Use two fingers to pull the ribbon cables out of the connectors.

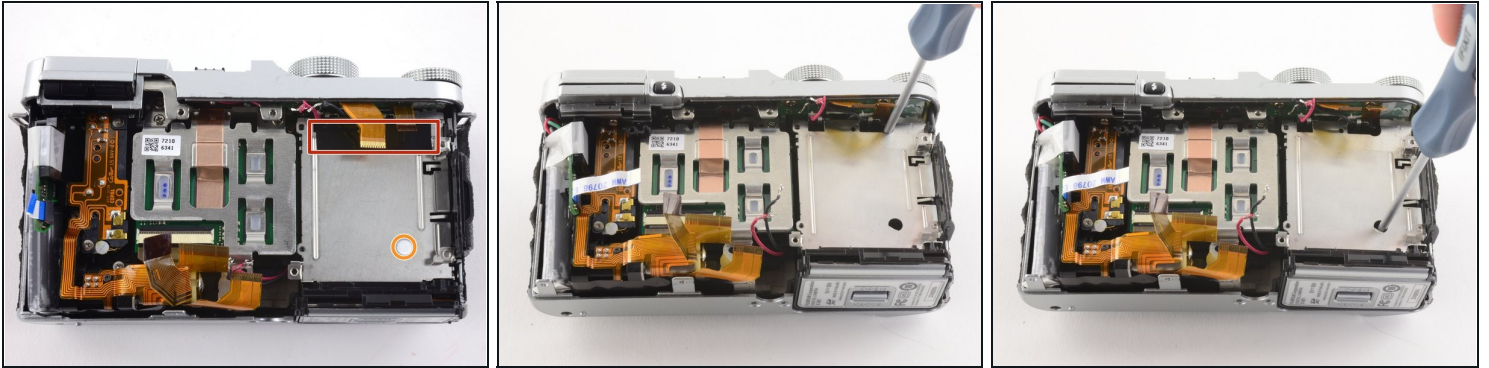
## Step 21



- Remove the 3.3 mm Phillips screw from the upper left corner of the motherboard.
- Remove the 2.4 mm Phillips screw in the bottom right corner of the motherboard.
- Use two fingers to remove the motherboard from the front case.

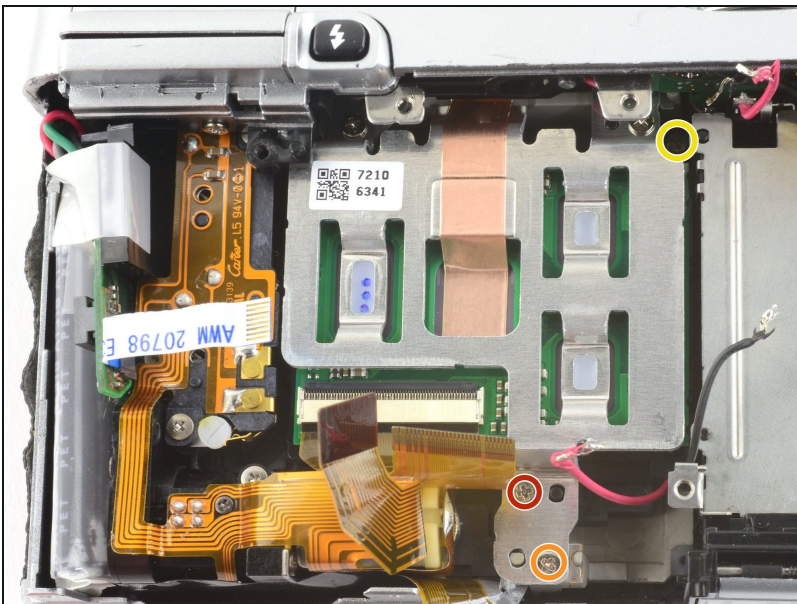


## Step 22



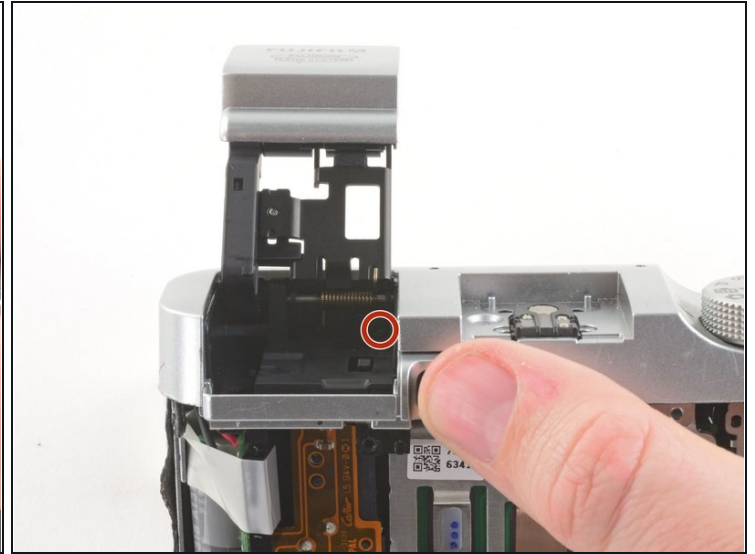
- Use tweezers to remove the black plastic tape at the top of the battery compartment.
- Insert a Phillips #00 screwdriver through the hole beneath the black tape to remove a 4.8 mm screw.
- Insert a Phillips #00 screwdriver through the white tamper evident sticker to remove a second 4.8 mm screw.

## Step 23



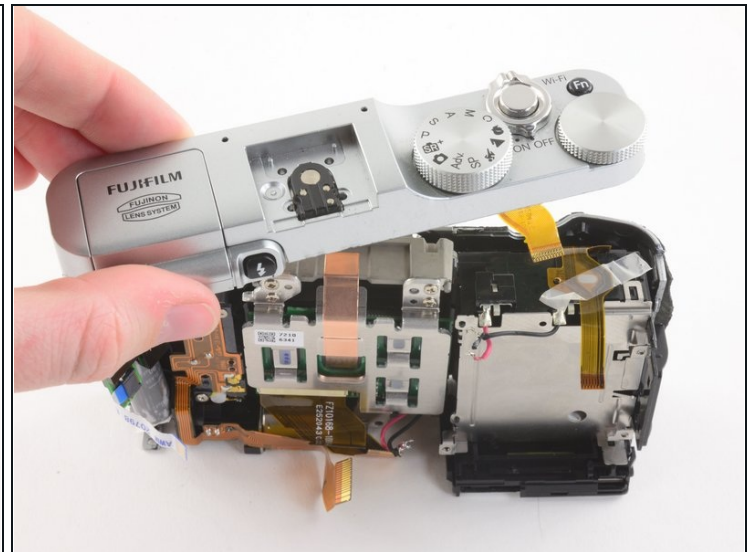
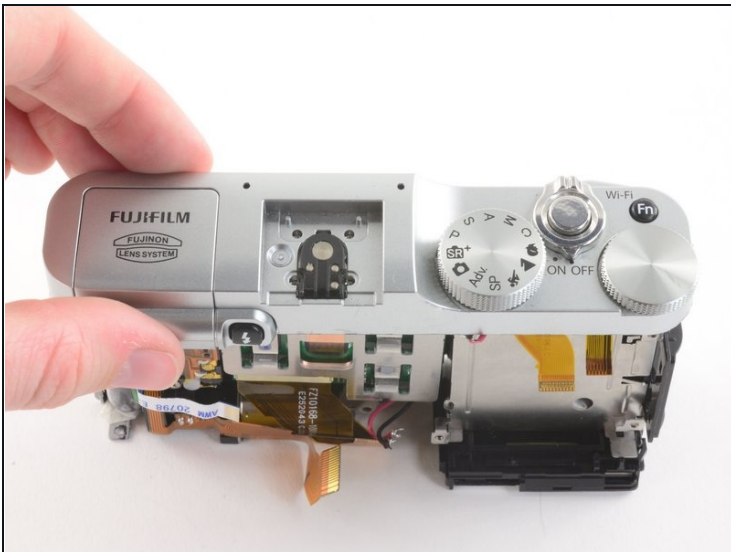
- Remove the 3.7 mm Phillips screw from the bottom of the sensor mount.
- Remove the 4.2 mm Phillips screw from the bottom of the sensor mount.
- Remove the 6.2 mm Phillips screw hiding between the sensor mount and the battery compartment.

## Step 24



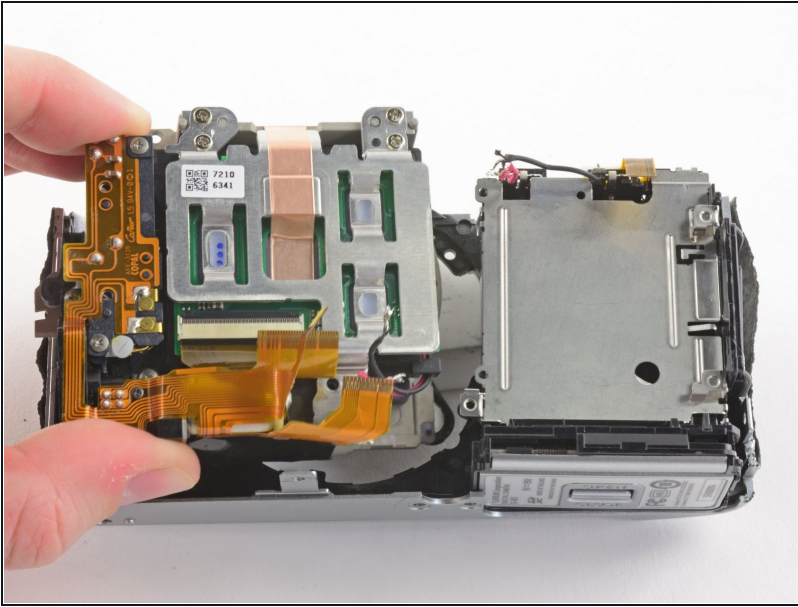
- Press the flash button to release the flash assembly.
- Remove the 3.4 mm Phillips screw in the back of the flash compartment.

## Step 25



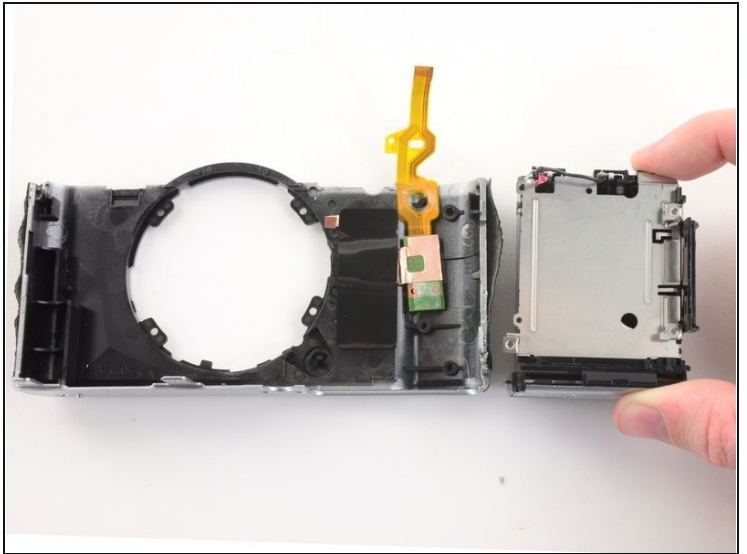
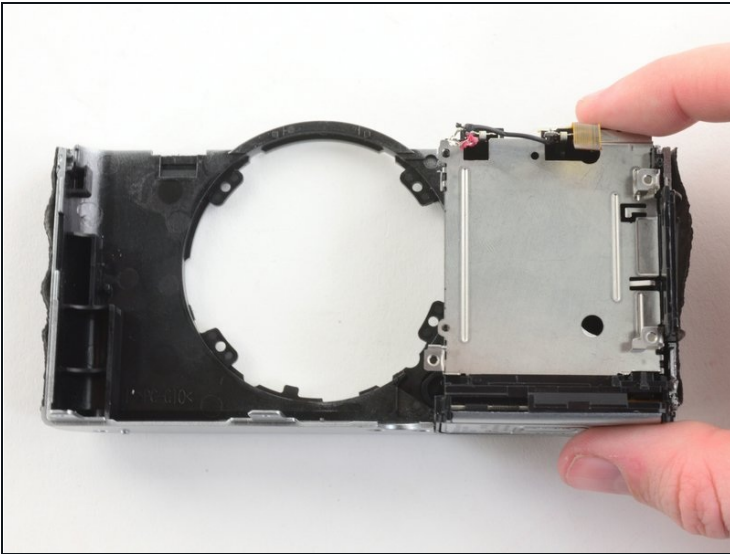
- Remove the top plate.

## Step 26



- Remove the sensor assembly.

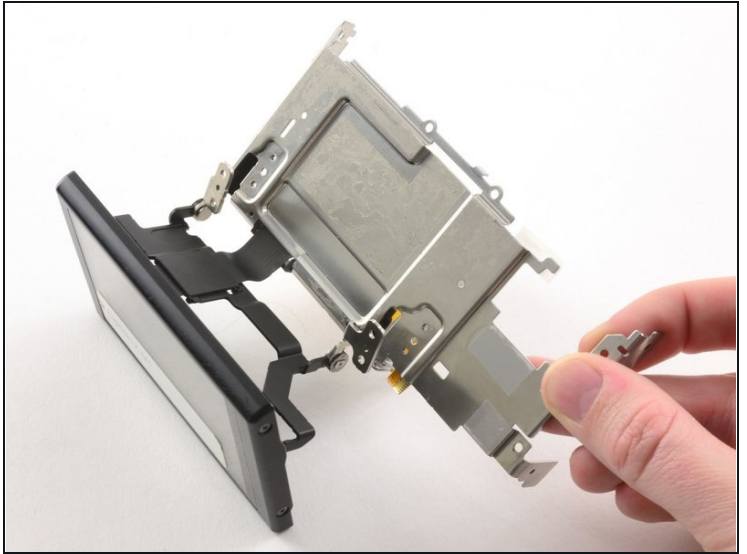
## Step 27



- Remove the battery compartment.



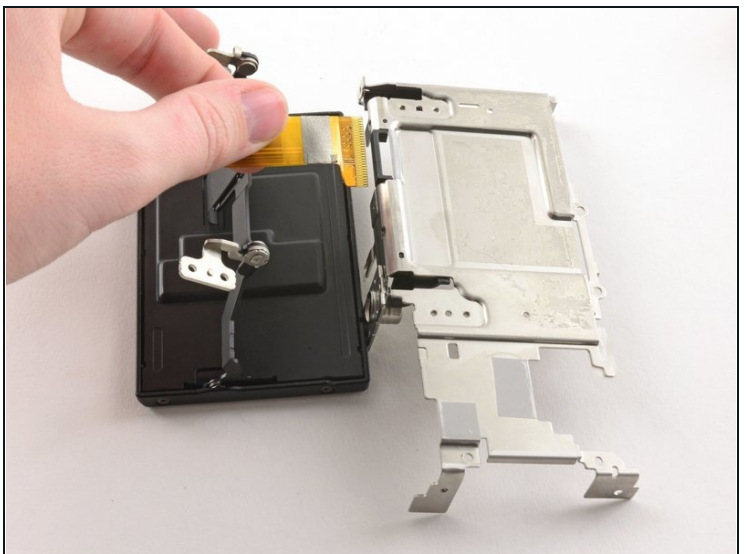
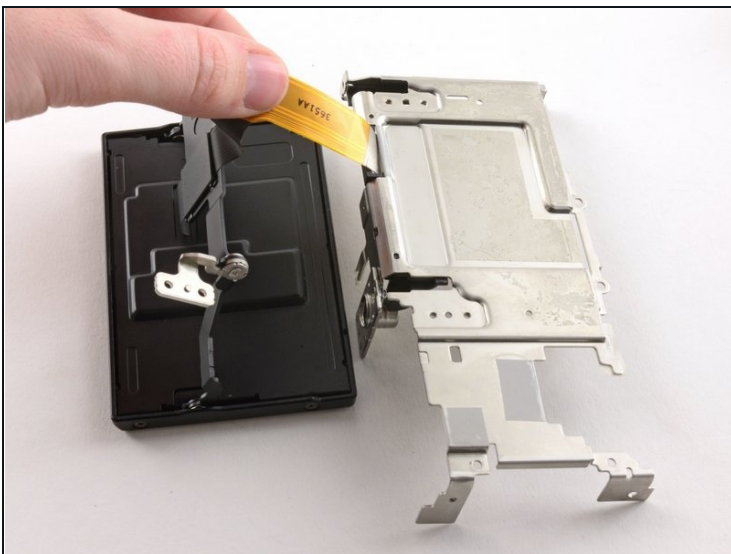
## Step 28



- Remove the four 2.6 mm Phillips screws from the LCD hinges.
- Tilt the LCD away from the metal frame.

**⚠ Do not attempt to remove the LCD, as it is attached to the metal frame by a ribbon cable.**

## Step 29



- Use two fingers to pull the ribbon through the hole in the metal frame.
- Remove the LCD from the metal frame.



## Step 30



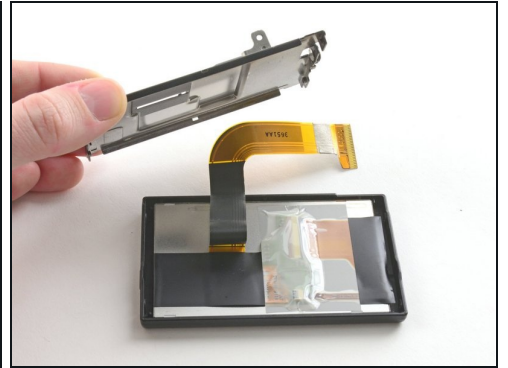
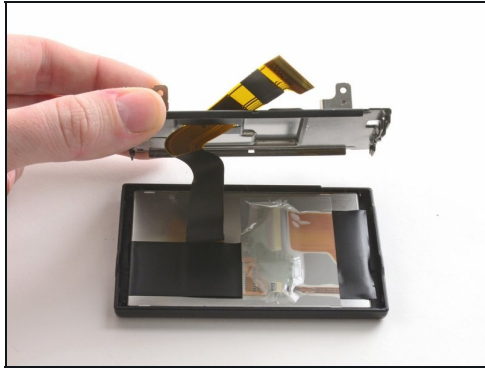
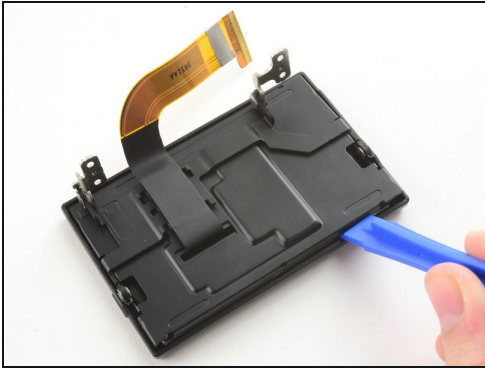
- Use the pointed end of a spudger to remove the ribbon cover on the back of the LCD.

## Step 31



- Remove the two 2.6 mm Phillips screws from the right hand side of the LCD screen.
- Remove the two 2.6 mm Phillips screws from the left hand side of the LCD screen.

## Step 32



- Use a plastic opening tool to pry the LCD case open.
- Once the case is open, pull the ribbon through the hole on the back case.

## Step 33



- Remove the LCD from the screen cover.

## Step 34



- You have successfully disassembled the Fujifilm X-M1!

---

To reassemble your device, follow these instructions in reverse order.