



# Panasonic EB-GD88 Screen Assembly Replacement

Written By: Patricia Taggart



## TOOLS:

iFixit Opening Tool (1)

Tri-point Y1 Screwdriver (1)

Tweezers (1)

### Step 1 — Prerequisite Guide for Camera, Screen Assembly



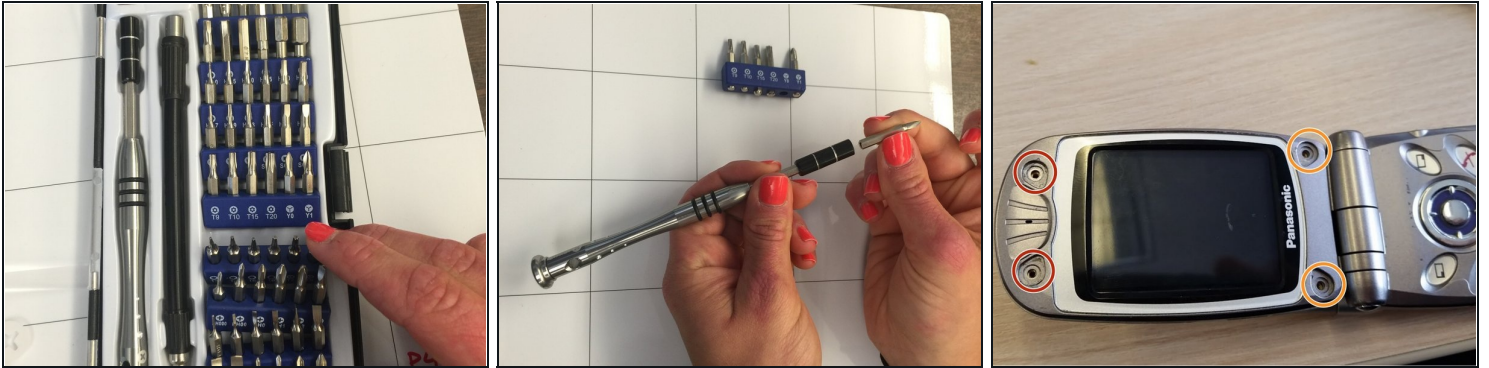
- Flip cellphone open.
- Out of the iFixit tool kit remove the black plastic opening tool, curved [tweezers](#), and 54 bit driver kit.

### Step 2



- Remove 4 rubber covers on the corners of the cellphone screen by prying them off with flat end of nylon spudger.
- ① The rubber covers are glued on, but they should pop off easily.
- ① These rubber covers may or may not be present.

### Step 3



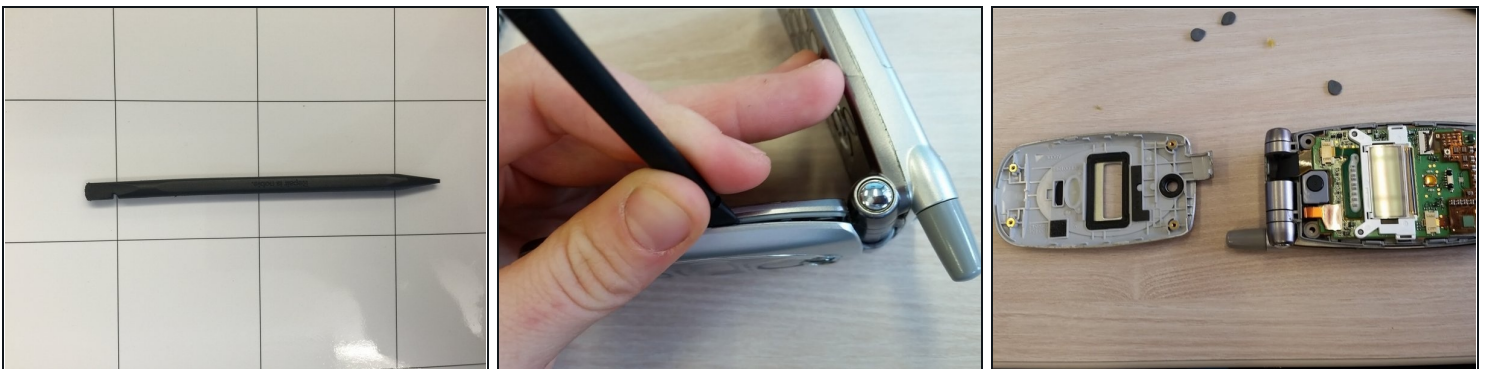
- Using a Y0 tri-wing screwdriver, found in the 54 bit driver kit, remove the two screws above the screen. Twist the screws counterclockwise to remove.

① These two screws are blueish

- Using a Y0 tri-wing screwdriver, remove the two screws below the screen. Twist the screws counterclockwise to remove.

① These two screws are silver and longer than the bluish.

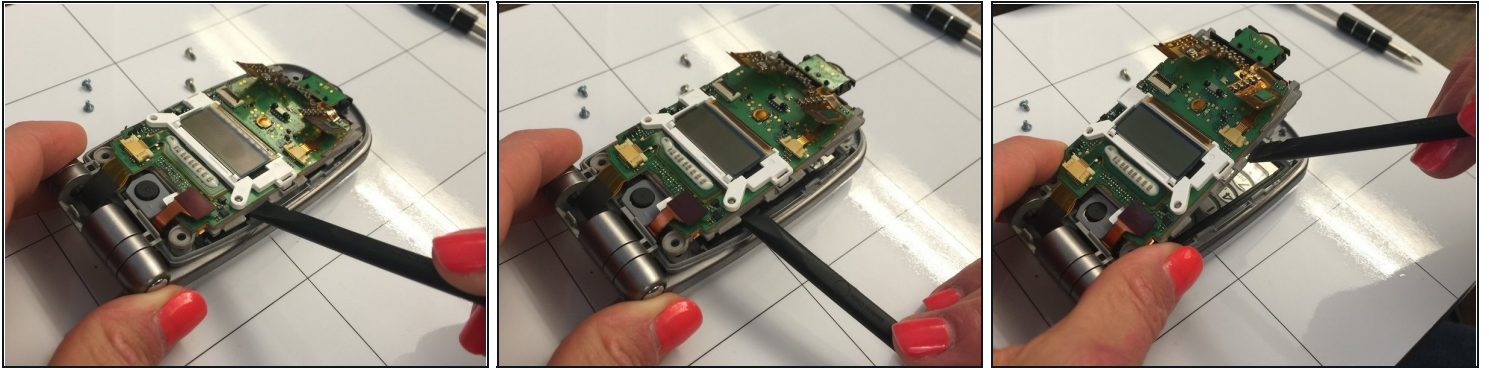
### Step 4



- Carefully pry front cover of cellphone off with flat end of nylon spudger.



## Step 5



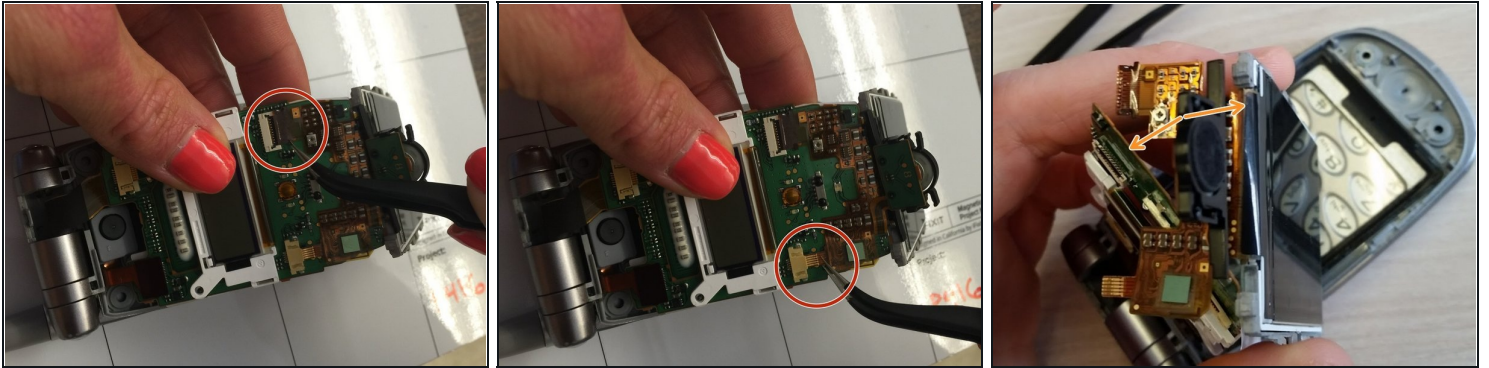
- Insert nylon spudger or curved tweezers into small gap between the phone's outer gray casing and the inner gray plastic compartment (which holds the green circuit board and screen together). This gap is indicated by red arrows.
- Use the tools as leverage to pop out inner gray compartment unit (screen, gray plastic, and circuit board) away from the phone's outer casing .
- ① Place nylon spudger and tweezers in the space between the outer phone casing and the inner gray compartment.

## Step 6 — Screen Assembly



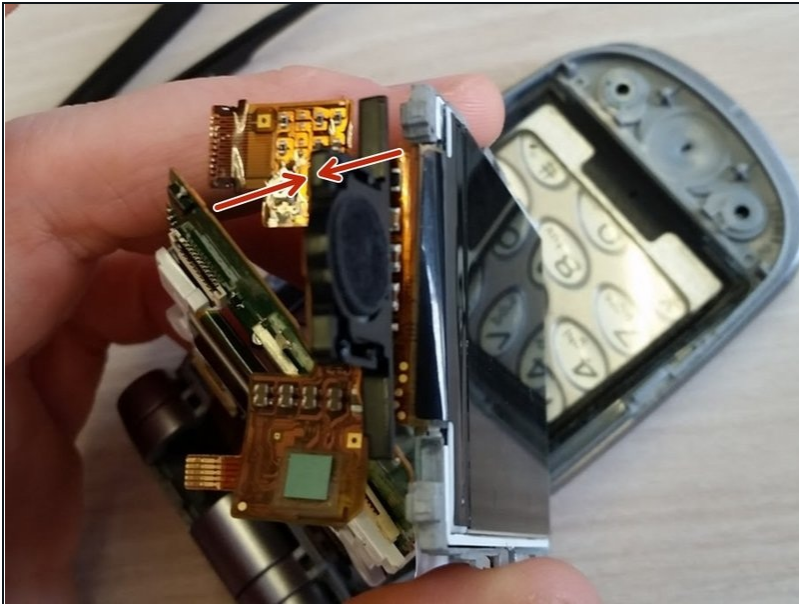
- At rectangular holes on the sides of screen, use [tweezers](#) to remove the screen from the gray plastic component by slipping tweezers under the white tray holding the screen.
- ① After the screen should only remain attached to gray component due to the ribbon at the top which connects the screen to the circuit board.

## Step 7



- On the circuit board, release the two connector ribbons holding the screen to the circuit board. To do this use tweezers to disconnect both the off-white connector piece and the white connector piece.
- Remove disconnected screen from phone.

## Step 8



- Attach new screen to circuit board. To reassemble your device, follow these instructions in the reverse order.