



Samsung SGH-A737 Camera Replacement

If you're experiencing issues with your Samsung...

Written By: Tommy



INTRODUCTION

If you're experiencing issues with your Samsung SGH-A737's camera, you may need to replace it. This guide will show you how to access and replace the circuit board in the phone's body, which contains the phone's camera. By following our step-by-step instructions, you'll be able to effectively replace the camera and restore the full functionality of your device. Let's get started!

TOOLS:

Phillips #000 Screwdriver (1)

Step 1 — Equipment and Tools



- Gather all the materials required prior to the teardown.
- A Phillips PH000 screw head and screwdriver are the only required tools for this guide.

 Make sure to use the correct screwdriver head in order to avoid damaging screw heads.

 Avoid over tightening the screws to avoid damaging them.

Step 2 — Battery



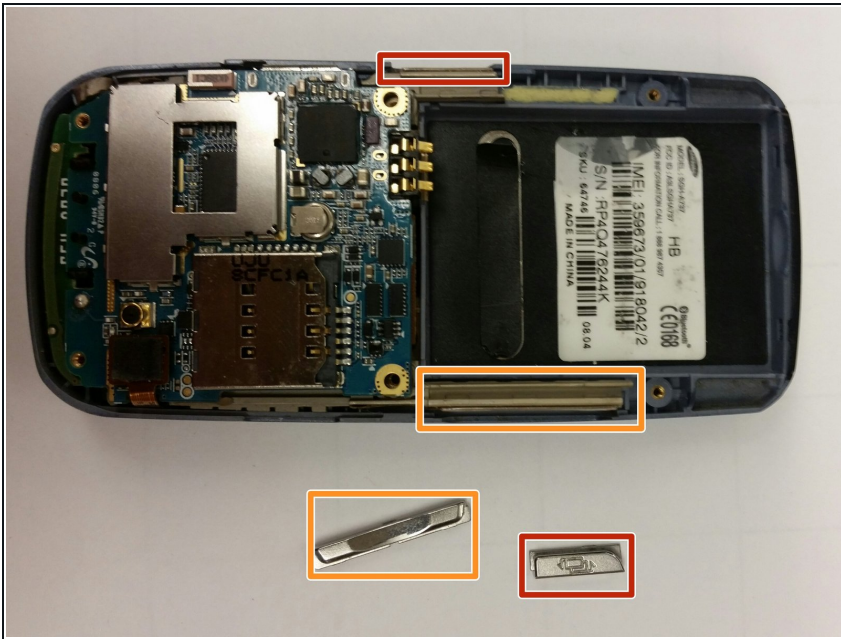
- Remove the battery from the back of the device.
- ❗ To do this, slide the battery cover off the rear side of the phone.
- Once the rear cover is removed, the battery should easily pop out of the phone.

Step 3 — Back Cover



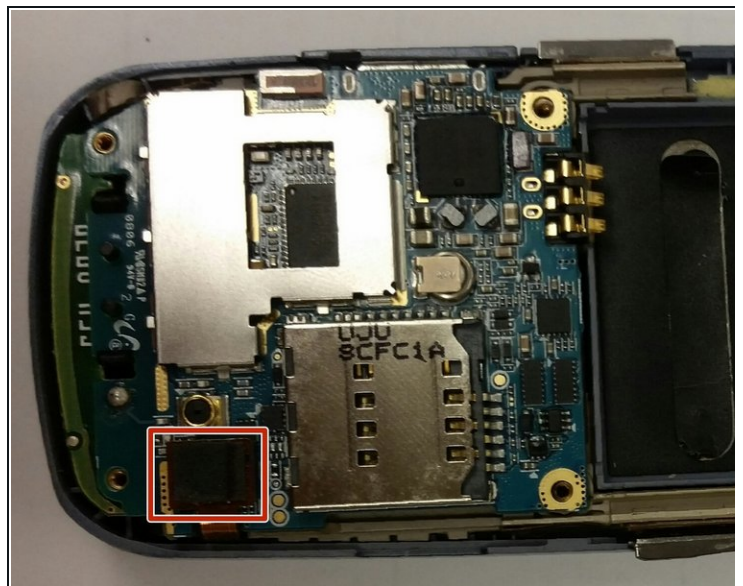
- Using the screwdriver, unscrew the six visible screw drivers on the back of the phone.
- ❗ Be sure to use the proper size of screwdriver. If you don't you may risk damaging the outer container of the device.

Step 4 — Side Buttons



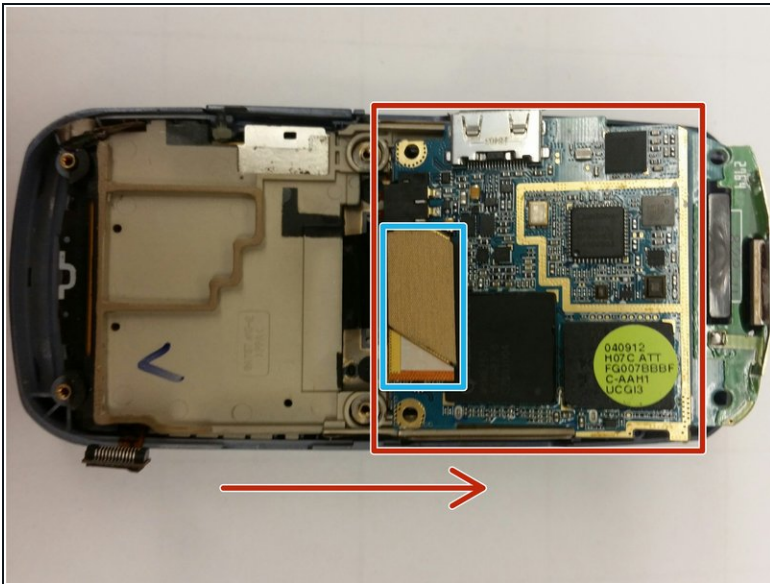
- Next, remove the side buttons by gently prying them off.
- ❗ When the phone is reassembled, these buttons will be placed back in their appropriate holder.

Step 5 — Circuit Board



- With care, lift up the connector located at the bottom left of the phone, as demonstrated in the accompanying image.

Step 6 — Circuit Board Continued



- Flip the circuit board up to unveil an orange connector near bottom of it.
- Gently unplug the connector by prying on the corner with a finger.

Step 7 — Circuit Board Holder



- Lift up the tan circuit board holder to separate it from the device.

Step 8 — Sliding Panel



- Peel off the black strip below the product sticker, unveiling two screws and unscrew them.
 - There are two more screws slightly below that need to be unscrewed as well.
- ⚠ Be sure to use the proper size screwdriver. Using the wrong size can cause damage to the case!

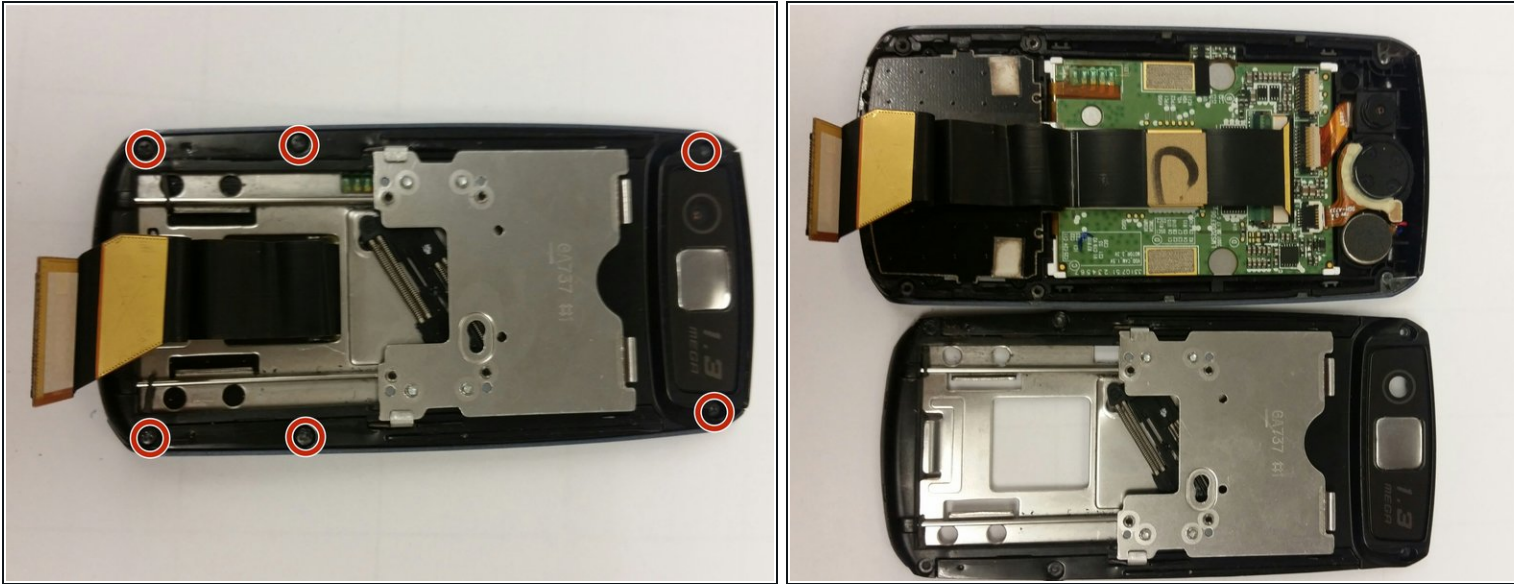
Step 9 — Sliding Panel Continued



- Make sure the phone is closed. If not slide it closed now.
- Next, carefully detach the blue plastic panel from the phone. It should already be slightly loose.

⚠ When sliding the connector through the rectangular gap, be sure to do so gently in order to avoid any damage.

Step 10 — Camera Panel



- Begin by removing the six visible screws located on the outer edge of the device.
- Once the screws are removed, gently separate the panel to unveil the circuits and camera.

Step 11 — Camera Replacement



⚠ Be sure to perform these steps using as little force as possible. The circuit boards can be delicate!

- To disconnect the camera, gently lift the tan flap away from the camera where the orange connector is attached. This should loosen the wire.
- Next, pry up on the camera to dislodge it. This may require some force.

To reassemble your device, follow these instructions in reverse order.