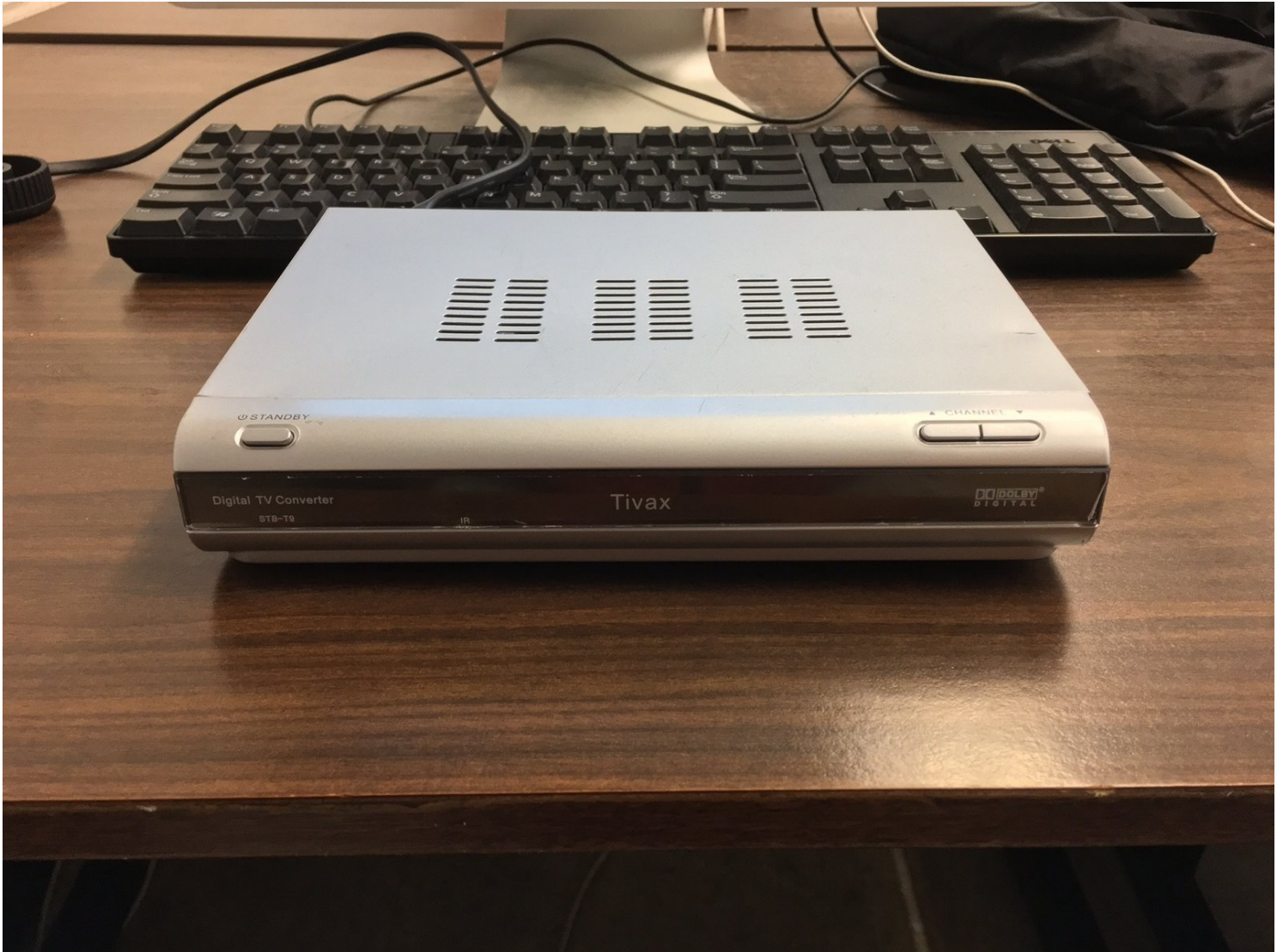




Tivax STB-T9 Daughter Board Replacement

This guide is for replacing the daughter board...

Written By: Olivia



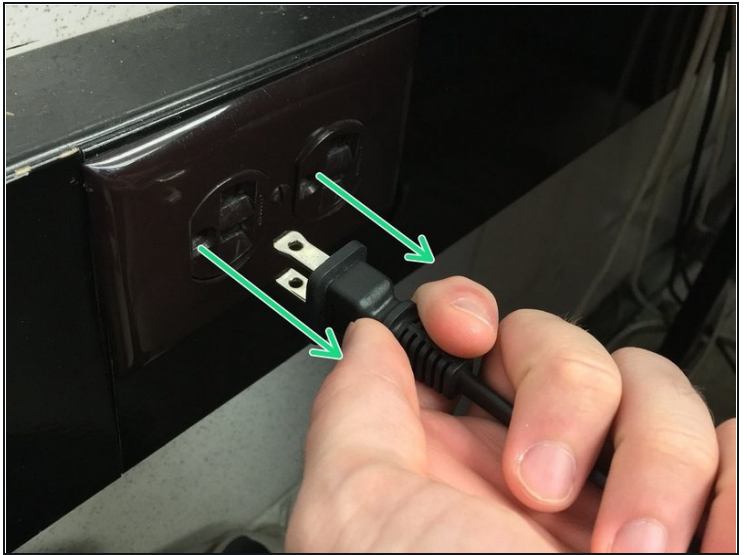
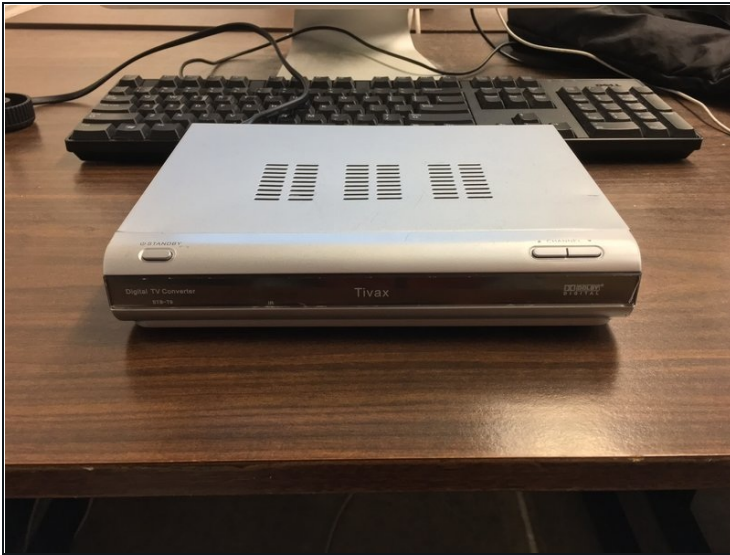
INTRODUCTION

This guide is for replacing the daughter board of the Tivax STB-T9 Digital TV Converter Box. The daughter board receives signals from the TV remote and sends them to the main circuit board to be processed and control the TV. The daughter board also takes in signals from buttons on the front of the converter (Power Button and Channel Up/Down). Without the daughter board the converter will not work, so it is an essential part.

TOOLS:

Phillips #2 Screwdriver (1)

Step 1 — Daughter Board



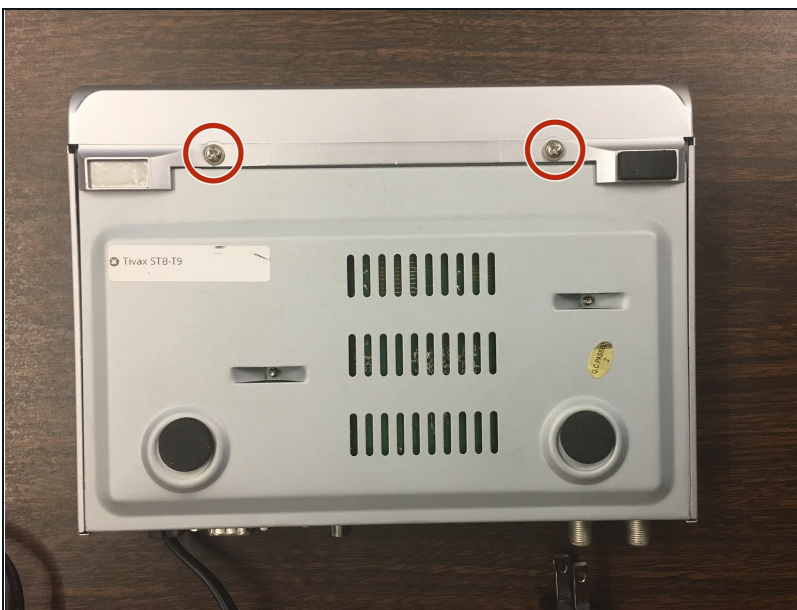
- Locate Tivax STB-T9 and unplug device from power outlet.

Step 2



- Remove the four screws holding the box together. 1 on each side and 2 on the back.
- ① You will be using the same Phillips number 2 screw driver(bit P2 in the iFixit tool kit) for the all the screws removed in this guide.

Step 3



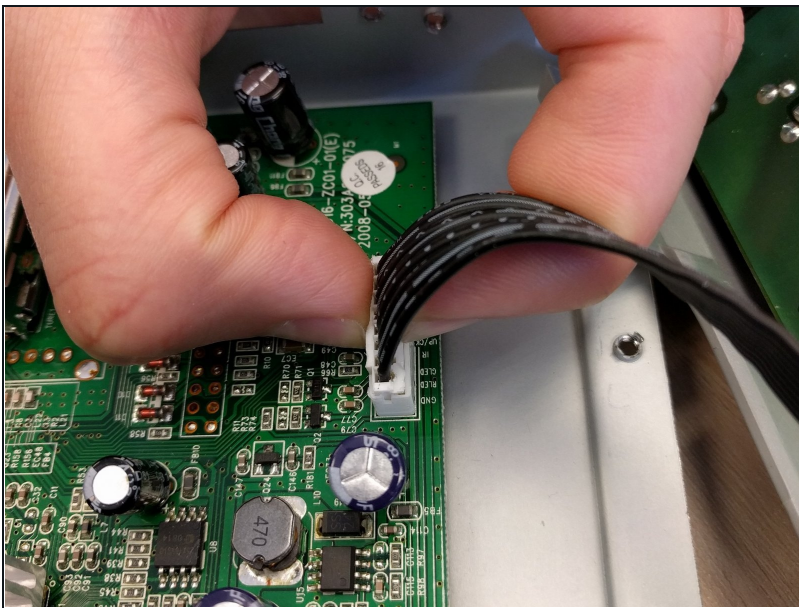
- Turn the converter upside down.
- Remove the two screws connecting the face plate the the main box.

Step 4



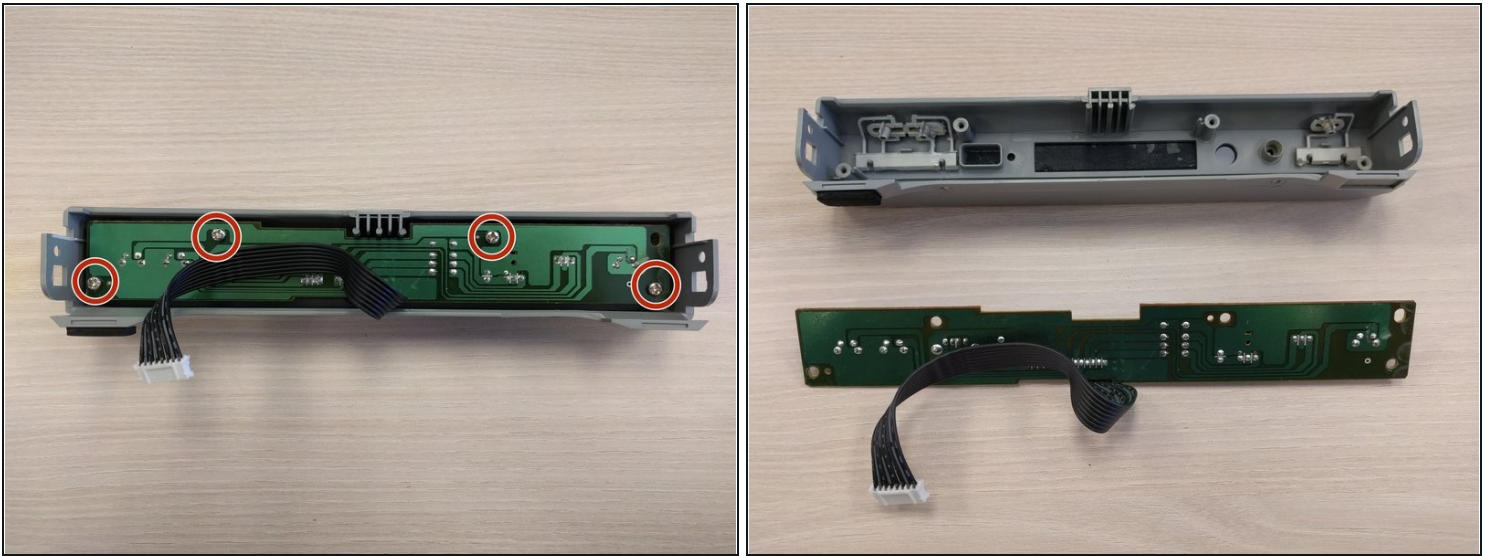
- Once screws are removed, take off case by first pulling up on the back and then sliding away from the front.
 - ① When putting the case back on, make sure the plastic surrounding the power cord is not in the way or you won't get it all the way on.

Step 5



- Locate the white connector attached to the faceplate by black wires.
- Place your forefinger and thumb on the sides of the connector. With little force, you should be able to pull the connector out.
- ⚠ Do not pull on the wire. This could pull them out of the connector.

Step 6



- Locate the daughter board in the face plate.
- Remove the four screws connecting the daughter board to the face plate.
 - ① Make sure to keep separate the Daughter Board screws and the case screws.

To reassemble your device please follow the steps in reverse order.