



# Blackberry Torch 9800 Replacing rear camera

Written By: 0delete



---

## INTRODUCTION

This guide will help you replace a not working camera on a Blackberry Torch 9800 phone. Making any physical change to this phone will void the warranty.

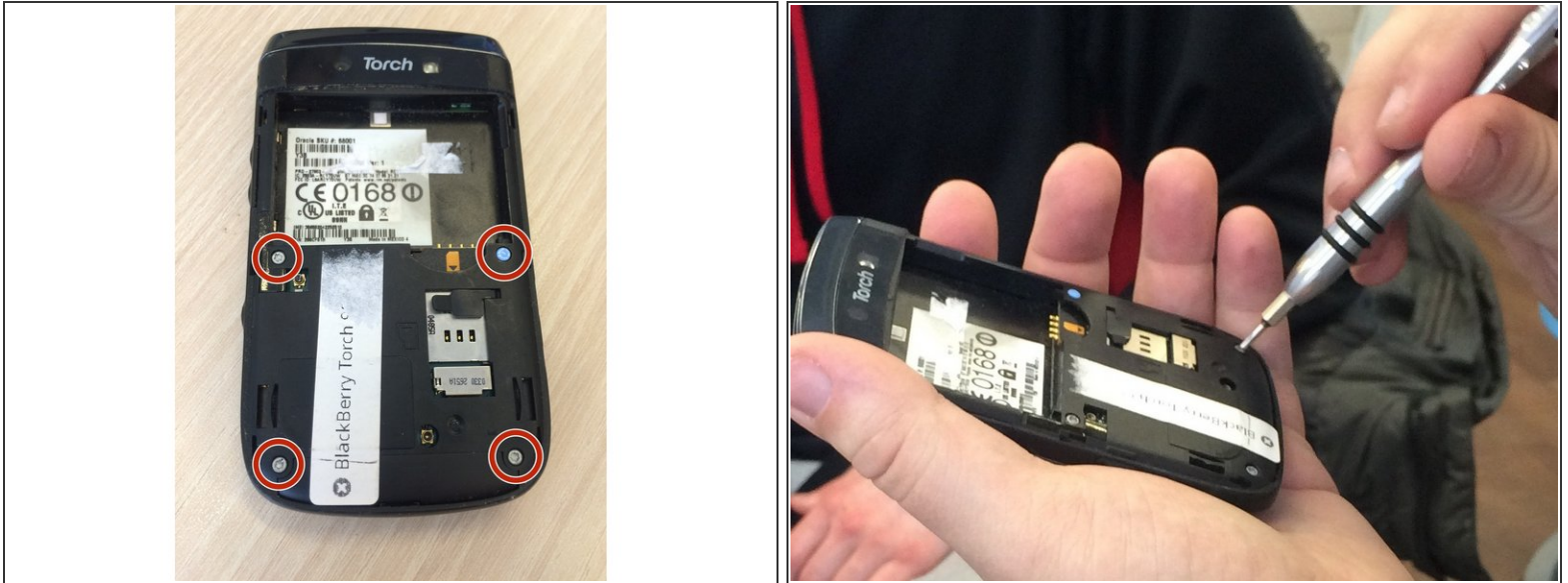
---



### TOOLS:

- [T7 Torx Screwdriver](#) (1)
  - [iFixit Opening Tools](#) (1)
  - [Flathead Screwdriver](#) (1)
-

## Step 1 — Replacing rear camera



- Remove the back cover and the battery.
- Remove the four exposed screws using a T7 screwdriver.
- Warning: Removing the top right screw (with the blue cover) will void the warranty.

## Step 2



- Remove the side trim using the plastic opening tool.
- When loose, push the top backwards and the bottom forwards to remove.

## Step 3



- Two new screws have been exposed near the top of the back.
- Remove the two screws using the T7 screwdriver.
- Remove the back panel using the plastic opening tool.



## Step 4



- Carefully use flathead screwdriver to free camera sensor.
- Wiggle on the right and left sides, not the top and bottom sides.

## Step 5



- To install the new camera sensor, place in slot. Reassemble phone by doing steps 1-3 in reverse order.

To reassemble your device, follow these instructions in reverse order.