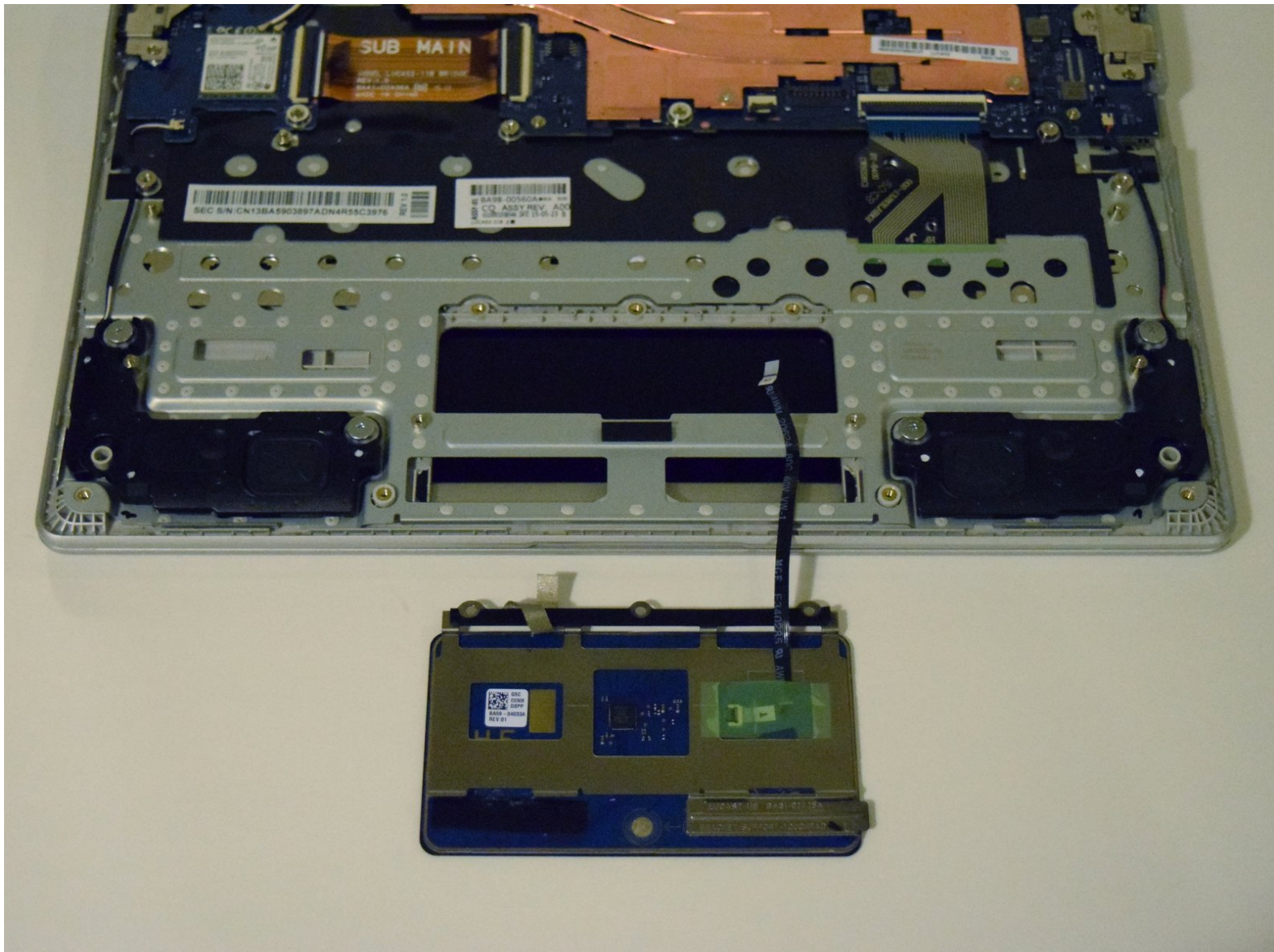




Samsung Chromebook 2 Trackpad Replacement

Replace your faulty Chromebook 2 trackpad to restore proper tactile input to your device.

Written By: Sebastian Baba



INTRODUCTION

You may need to perform this replacement if you are experiencing an unresponsive trackpad on your Chromebook . Ensure your device is powered off before beginning this replacement.

TOOLS:

- [iFixit Opening Tools](#) (1)
 - [Heavy-Duty Spudger](#) (1)
 - [Phillips #0 Screwdriver](#) (1)
 - [Phillips #00 Screwdriver](#) (1)
-

Step 1 — Battery



- Make sure your Chromebook is turned off before you begin.
- Set the laptop face down on a flat surface.

Step 2



- Remove the nine 5 mm screws on the bottom cover using a Phillips #0 screwdriver.

Step 3



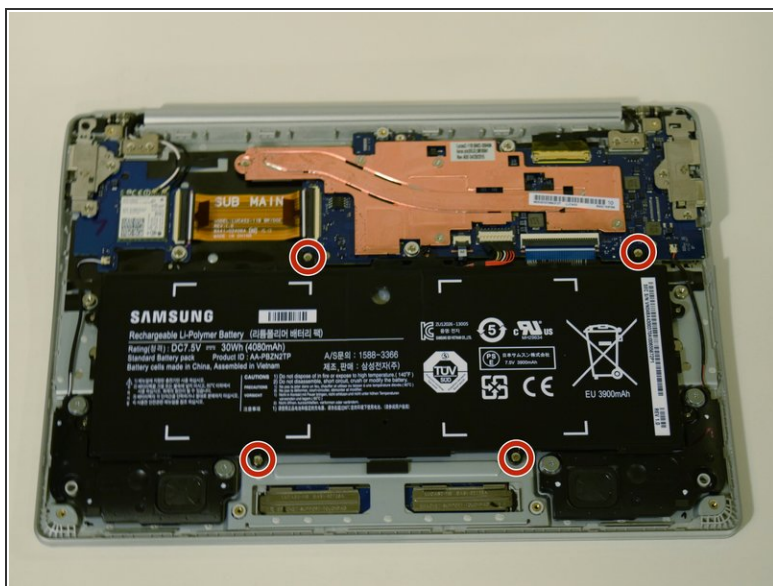
- Loosen the back cover panel with a plastic opening tool, and work it all the way around the computer.

Step 4



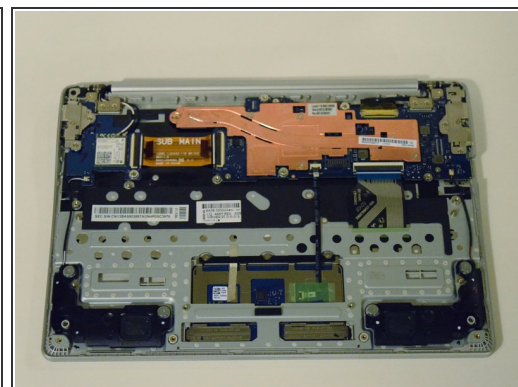
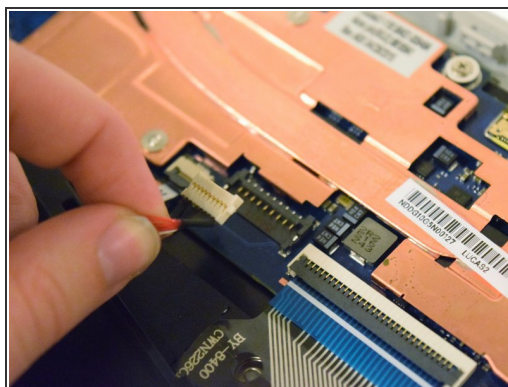
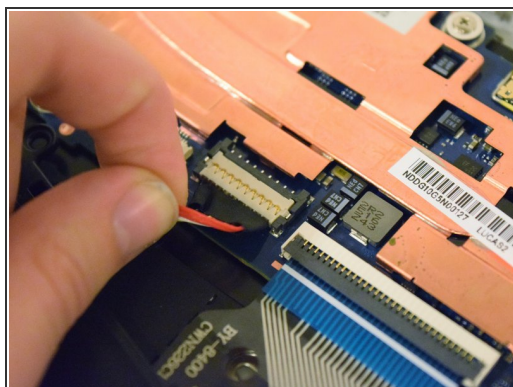
- Once the cover is loose, remove the back cover panel using your hands.

Step 5



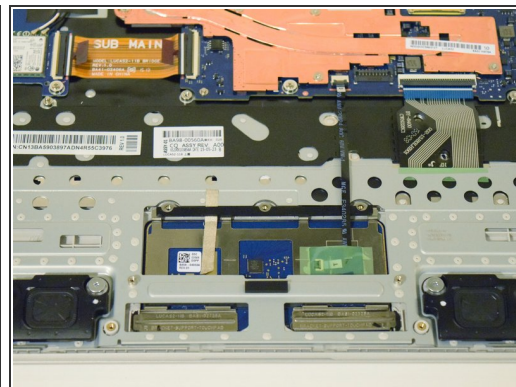
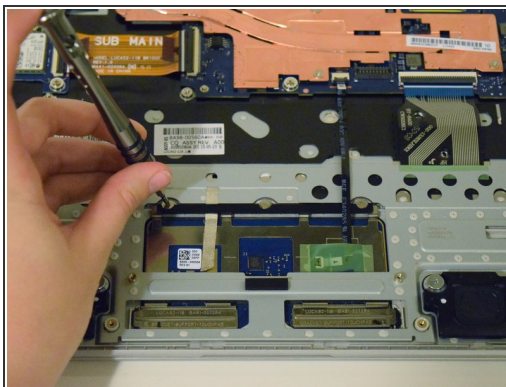
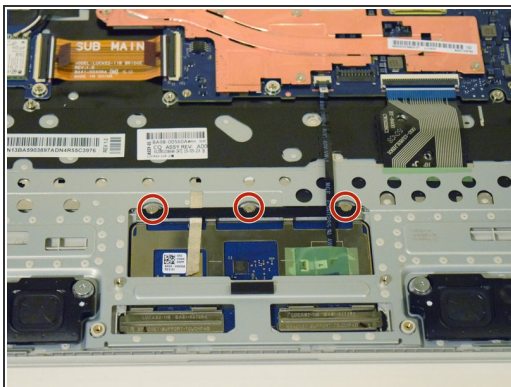
- Unscrew the four 4 mm screws holding the battery in place with a Phillips #0 screwdriver.

Step 6



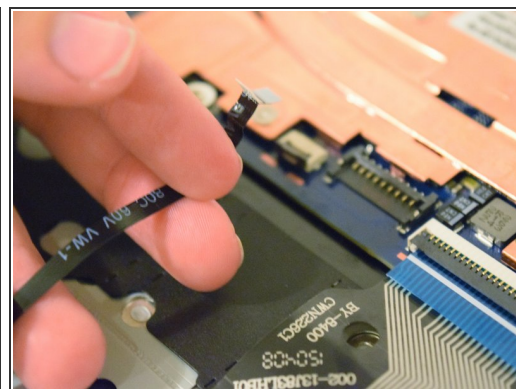
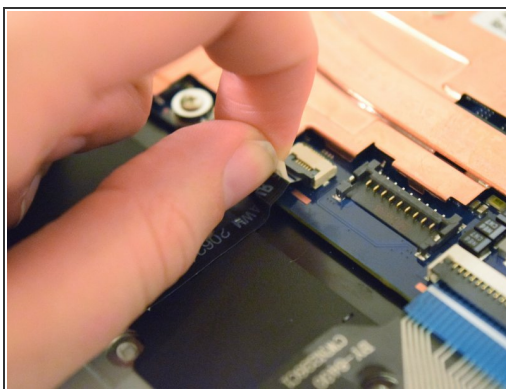
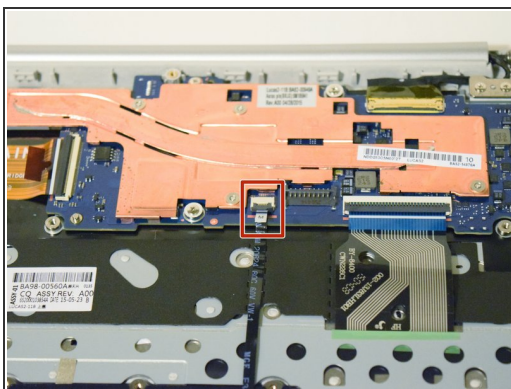
- Disconnect the wire that connects the battery to the motherboard by pulling upward.

Step 7 — Trackpad



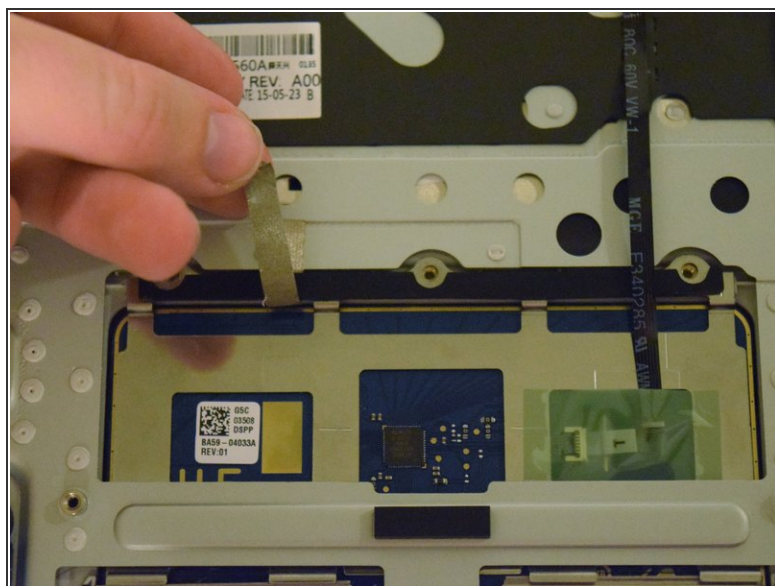
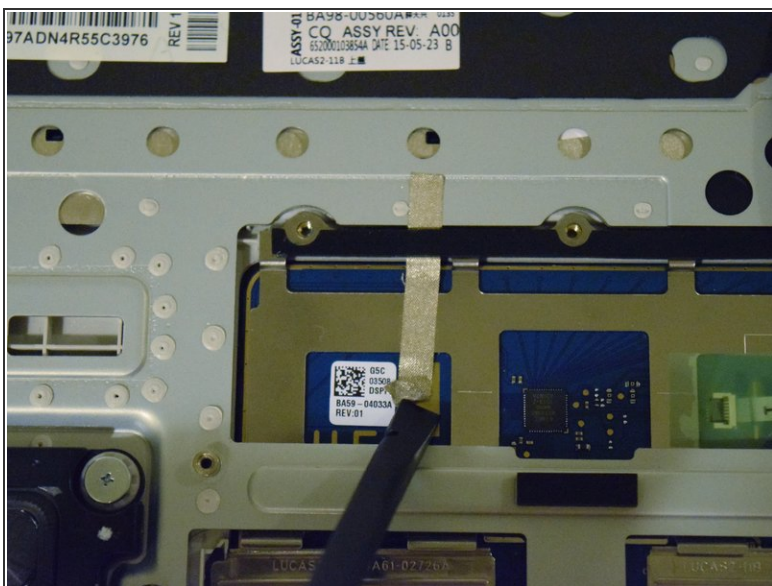
- Using the Phillips #00 screwdriver, remove the three 2 mm screws keeping the trackpad in place.

Step 8



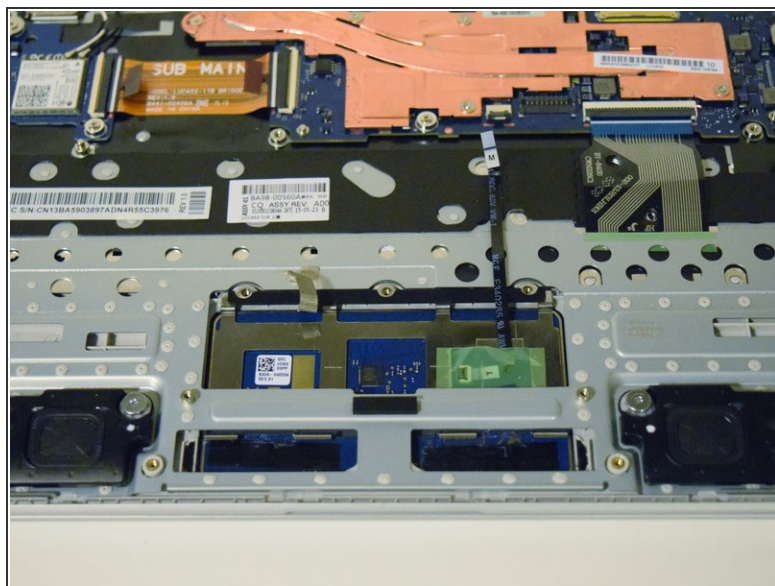
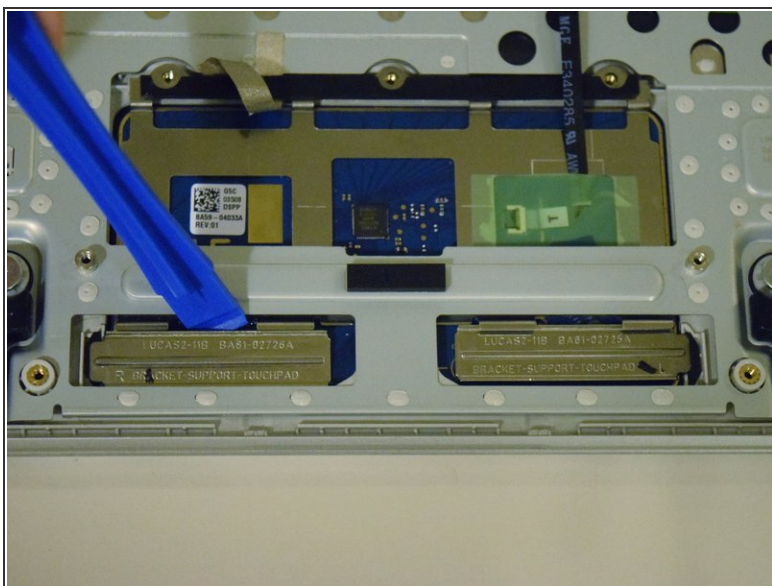
- Remove the connector between the trackpad and the motherboard by pulling upwards on it at the port.

Step 9



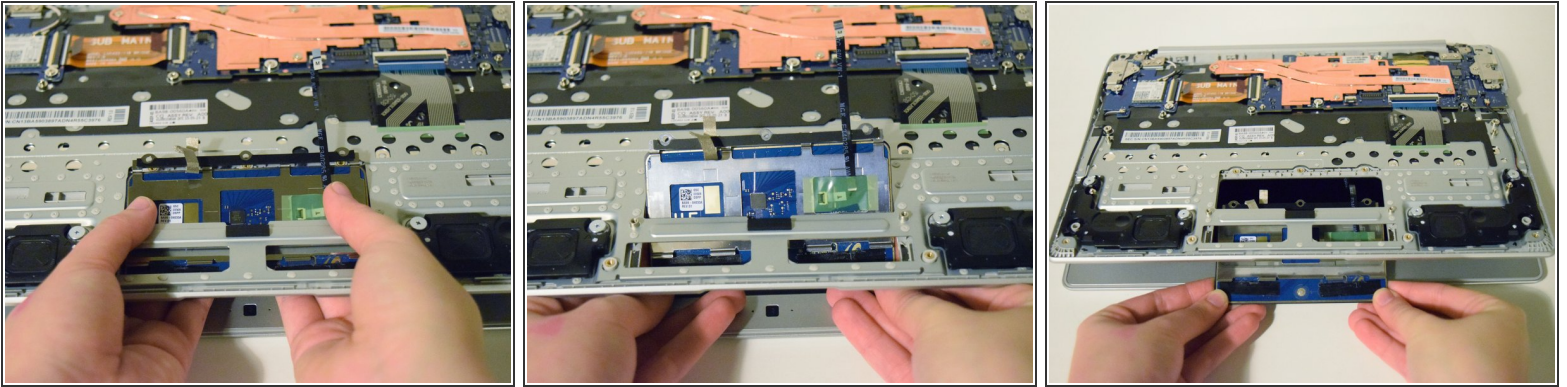
- Peel back the adhesive strip holding the trackpad in place with the heavy-duty spudger.

Step 10



- Use a plastic opening tool to disconnect the metal trackpad support brackets.
- ⓘ Don't be afraid to use a moderate amount of force when prying the support brackets loose.

Step 11



- With the laptop slightly open, push the trackpad upwards at the rear, and pull it out from the bottom.

To reassemble your device, follow these instructions in reverse order.