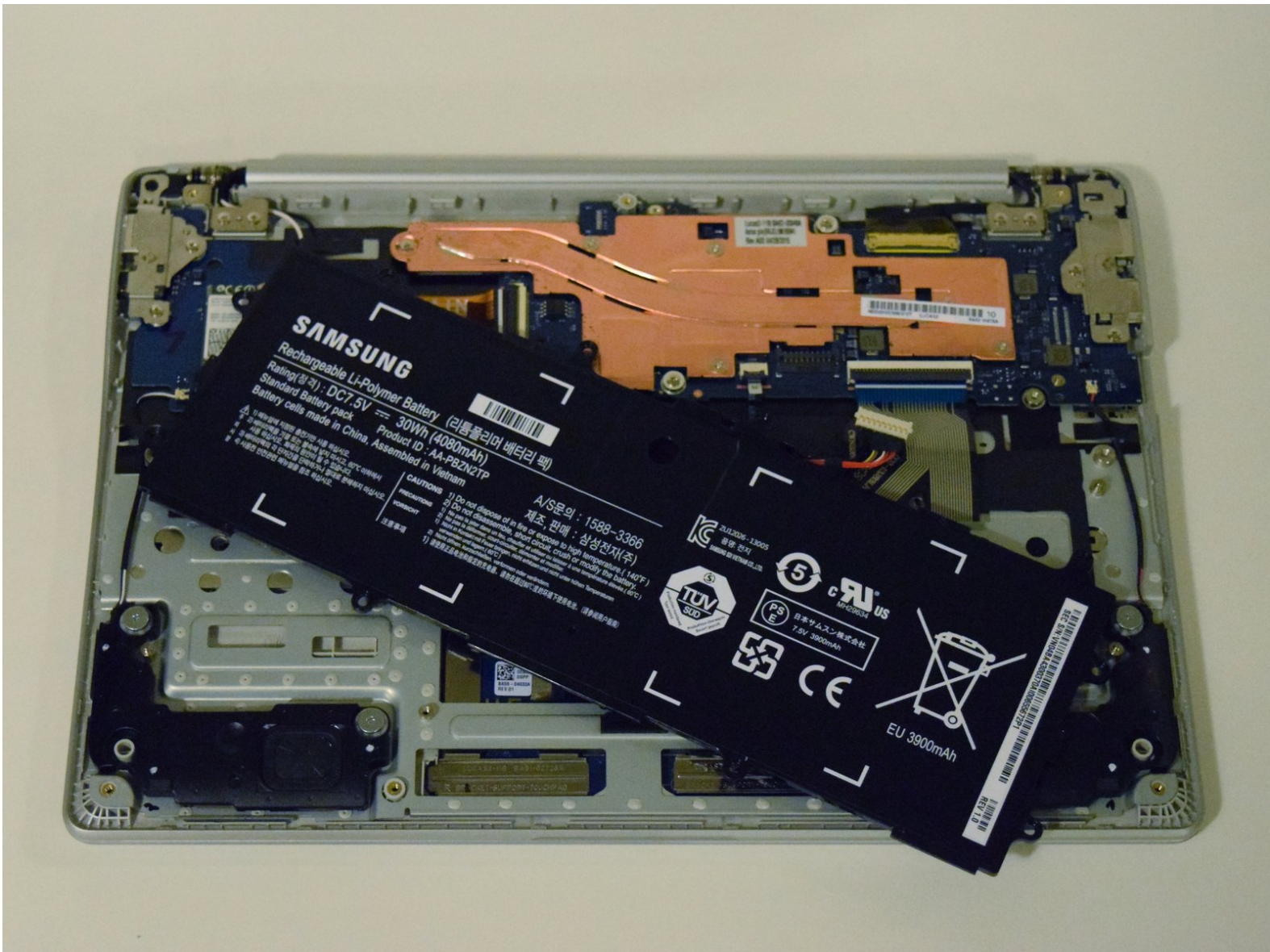




Written By: Allan



© iFixit — CC BY-NC-SA

INTRODUCTION

You may need to perform this replacement if you are experiencing noticeably reduced battery life from your current unit, or your current battery will not recharge. Ensure your device is powered off before beginning this replacement.



TOOLS:

- [Phillips #0 Screwdriver](#) (1)
 - [iFixit Opening Tools](#) (1)
-

Step 1 — Battery



- Make sure your Chromebook is turned off before you begin.
- Set the laptop face down on a flat surface.

Step 2



- Remove the nine 5 mm screws on the bottom cover using a Phillips #0 screwdriver.

Step 3



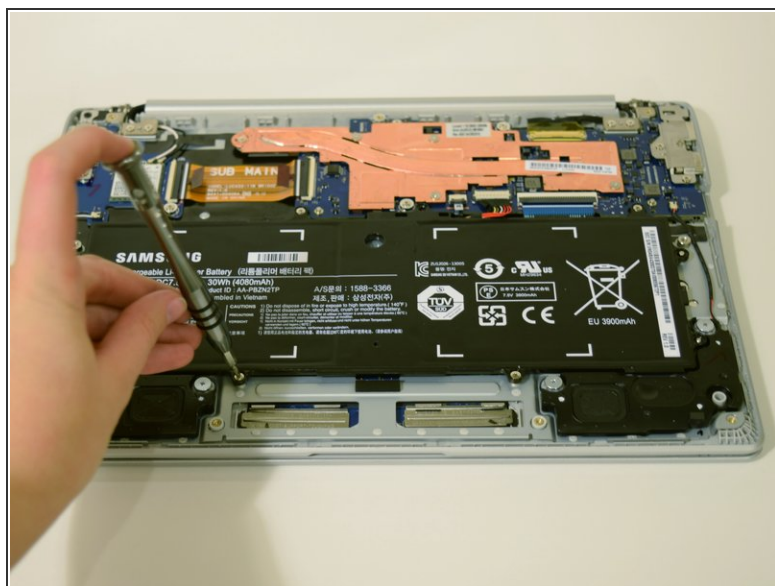
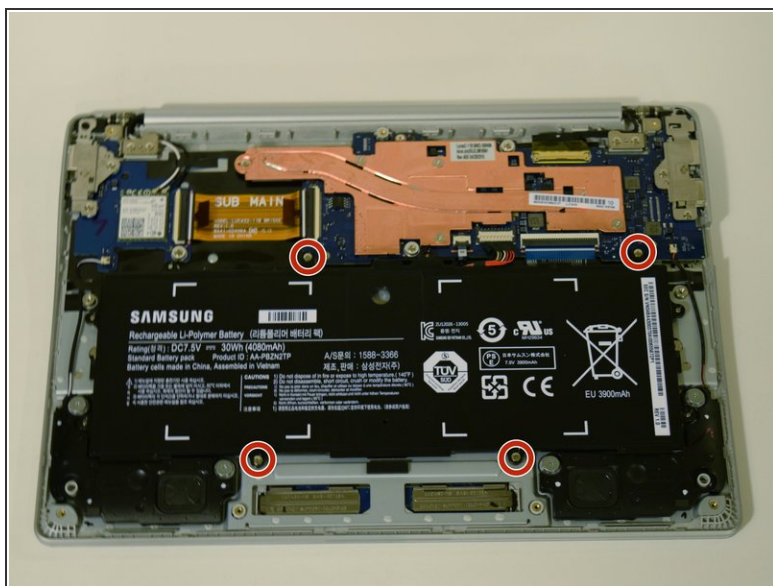
- Loosen the back cover panel with a plastic opening tool, and work it all the way around the computer.

Step 4



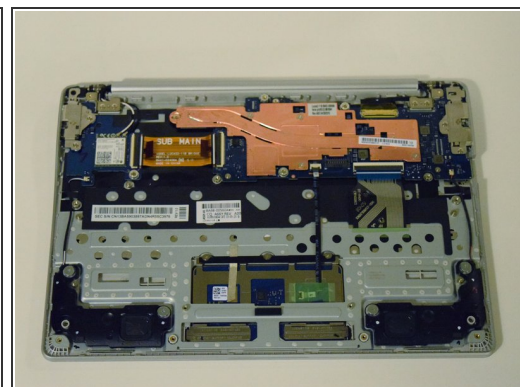
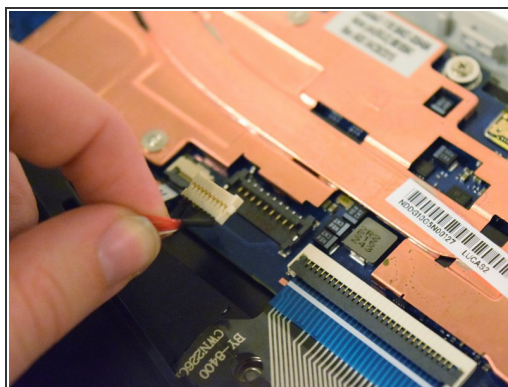
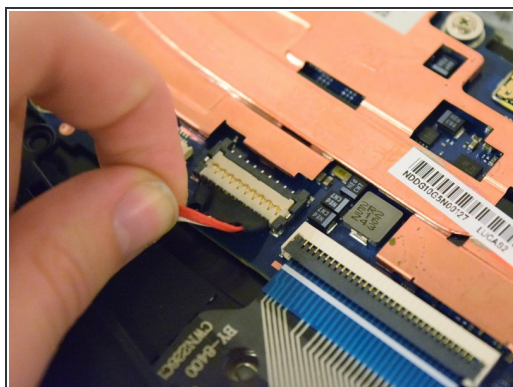
- Once the cover is loose, remove the back cover panel using your hands.

Step 5



- Unscrew the four 4 mm screws holding the battery in place with a Phillips #0 screwdriver.

Step 6



- Disconnect the wire that connects the battery to the motherboard by pulling upward.

To reassemble your device, follow these instructions in reverse order.