



Samsung Chromebook 2 Screen Replacement

If your screen is no longer functioning to its full capacity, follow this guide to replace it.

Written By: MacKenzie Colson



INTRODUCTION

You may need to perform this replacement if your Chromebook 2 has a faulty screen, resulting in display issues. Ensure your device is powered off before beginning this replacement.

In order to reduce shock hazard during this replacement, the steps to remove the battery are included as a prerequisite.



TOOLS:

- [iFixit Opening Tools](#) (1)
- [Spudger](#) (1)
- [Phillips #0 Screwdriver](#) (1)



PARTS:

- [11.6" Chromebook LCD N116BGE-EA2REV.C1](#) (1)

Step 1 — Battery



- Make sure your Chromebook is turned off before you begin.
- Set the labtop face down on a flat surface.

Step 2



- Remove the nine 5 mm screws on the bottom cover using a Phillips #0 screwdriver.

Step 3



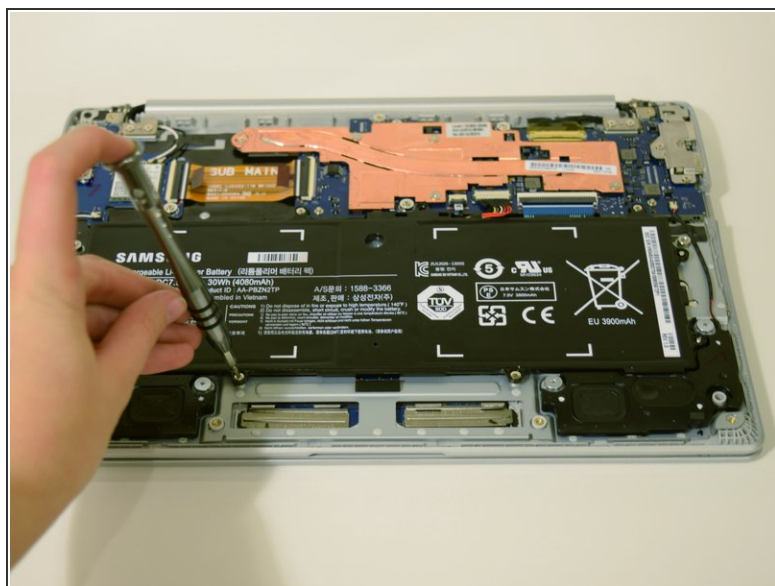
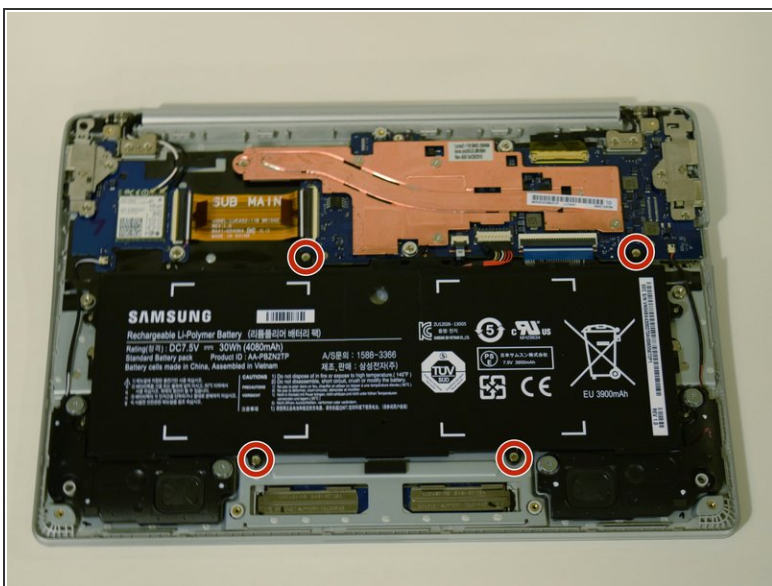
- Loosen the back cover panel with a plastic opening tool, and work it all the way around the computer.

Step 4



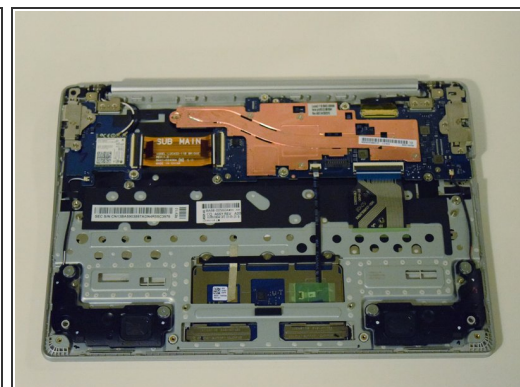
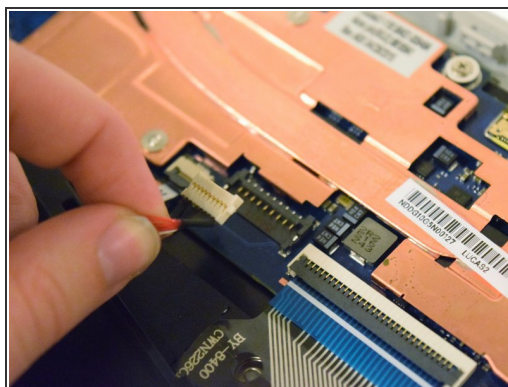
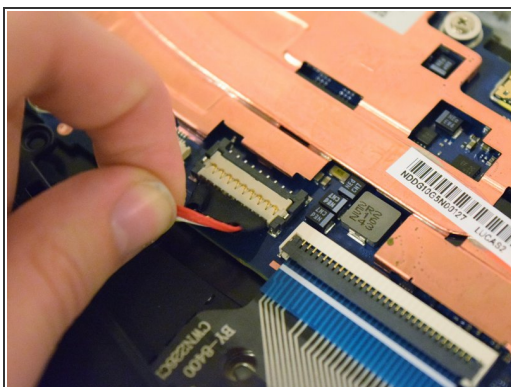
- Once the cover is loose, remove the back cover panel using your hands.

Step 5



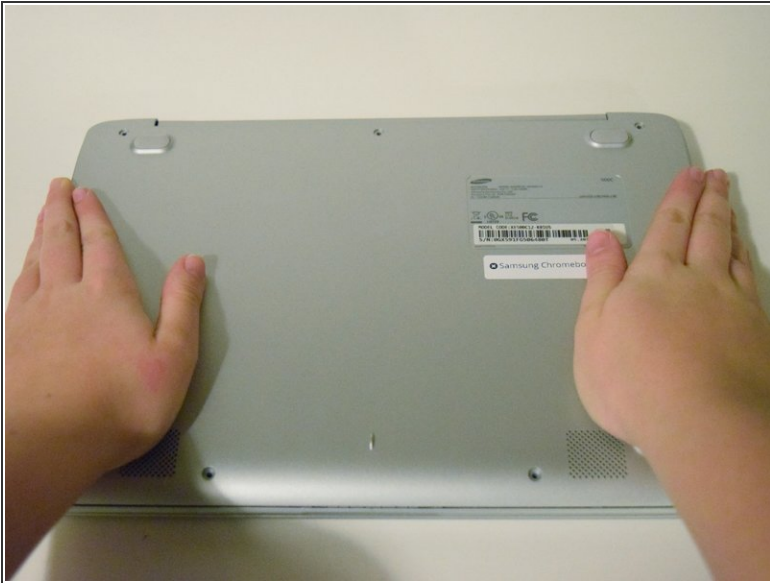
- Unscrew the four 4 mm screws holding the battery in place with a Phillips #0 screwdriver.

Step 6



- Disconnect the wire that connects the battery to the motherboard by pulling upward.


Step 7 — Screen



- Replace the back cover by clicking it into place with your hands.
- ⓘ No need to replace the screws, this is just to protect the internal hardware while working on the screen.

Step 8



- Open the laptop and place it so that the back of the screen is laying on a flat surface.
 - Insert a plastic opening tool between the front cover and plastic screen trim.
 - Work the plastic opening tool all around the trim.
-  Don't be afraid to use your hands to pull the trim from the front panel.

Step 9



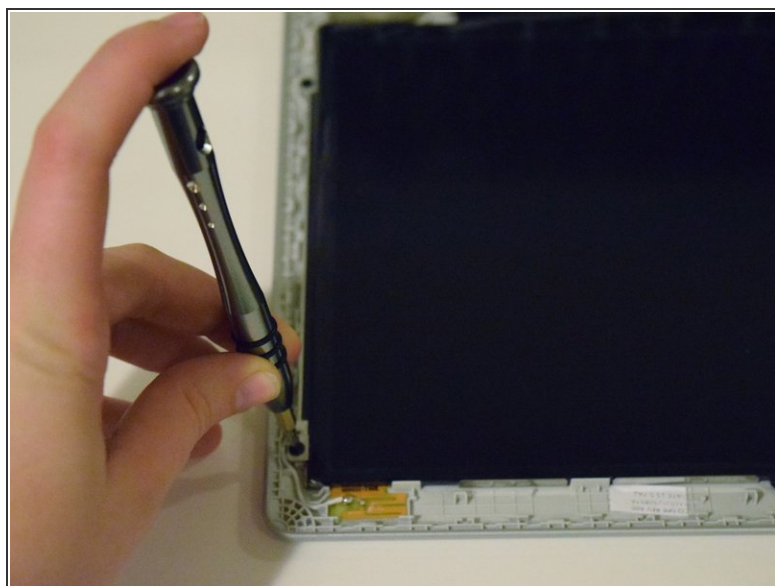
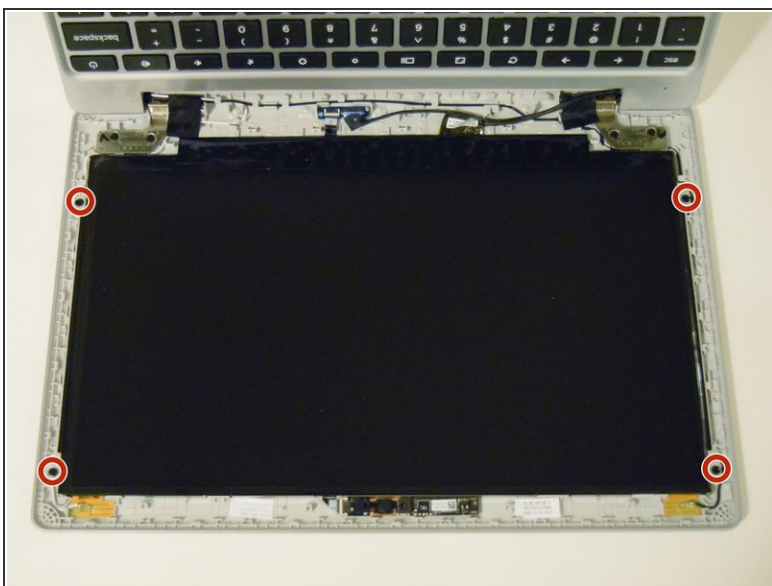
- Flip the computer over so that the keys and screen are facing down.
- Insert the spudger between the back and front panel, at the hinge, and push the trim out.

Step 10



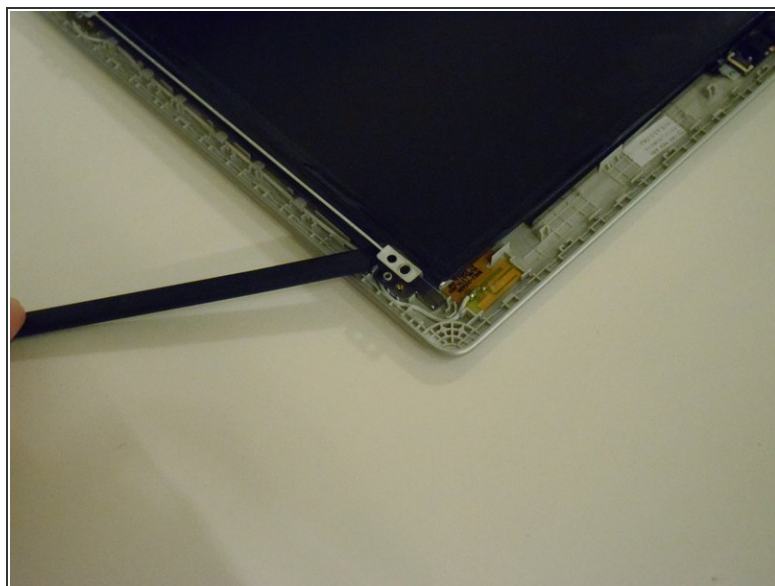
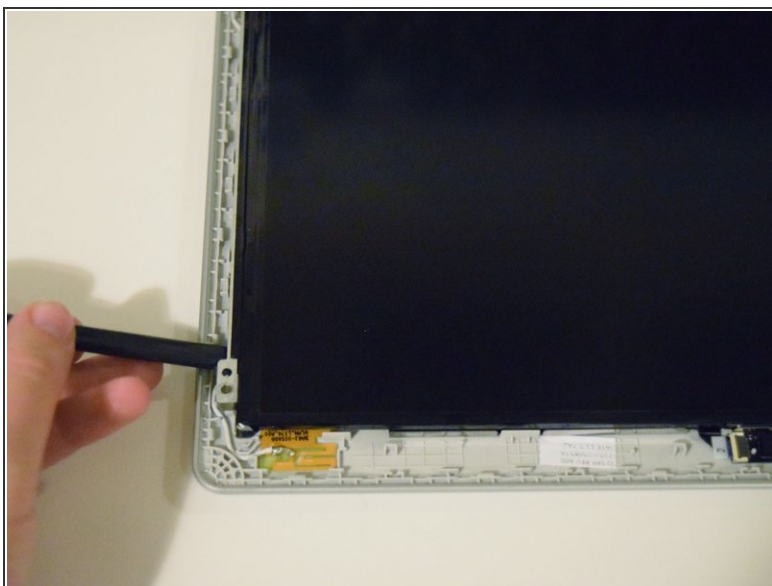
- Place the laptop in a position where it is resting on the back of the screen.
- Remove the trim from the front panel by pulling up with your hands.

Step 11



- Using a Phillips #0 screwdriver to unscrew the four 3 mm screws keeping the screen in place.

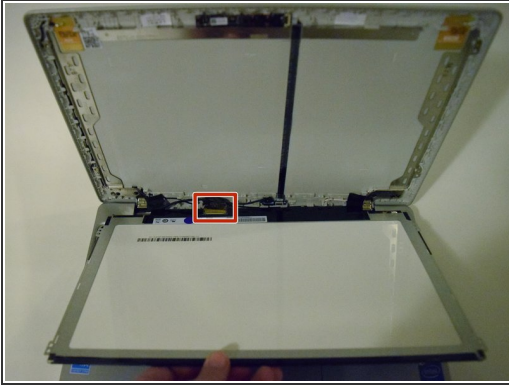
Step 12



- Using the spudger, pry the screen loose from the front panel.

⚠ Do not try to remove the screen yet, it is still connect by a wire.

Step 13



- Place the laptop in an upright position.
- ⚠ When you place the Chromebook in this position the screen may fall off, so make sure to hold onto it.
- Pull back the screen to locate the LCD cable, and disconnect it by pulling the black tape that surrounds it towards you.

Step 14



- Pull the screen from the front panel using your hands to fully remove it.

To reassemble your device, follow these instructions in reverse order.

This document was generated on 2020-11-16 03:20:36 AM (MST).

