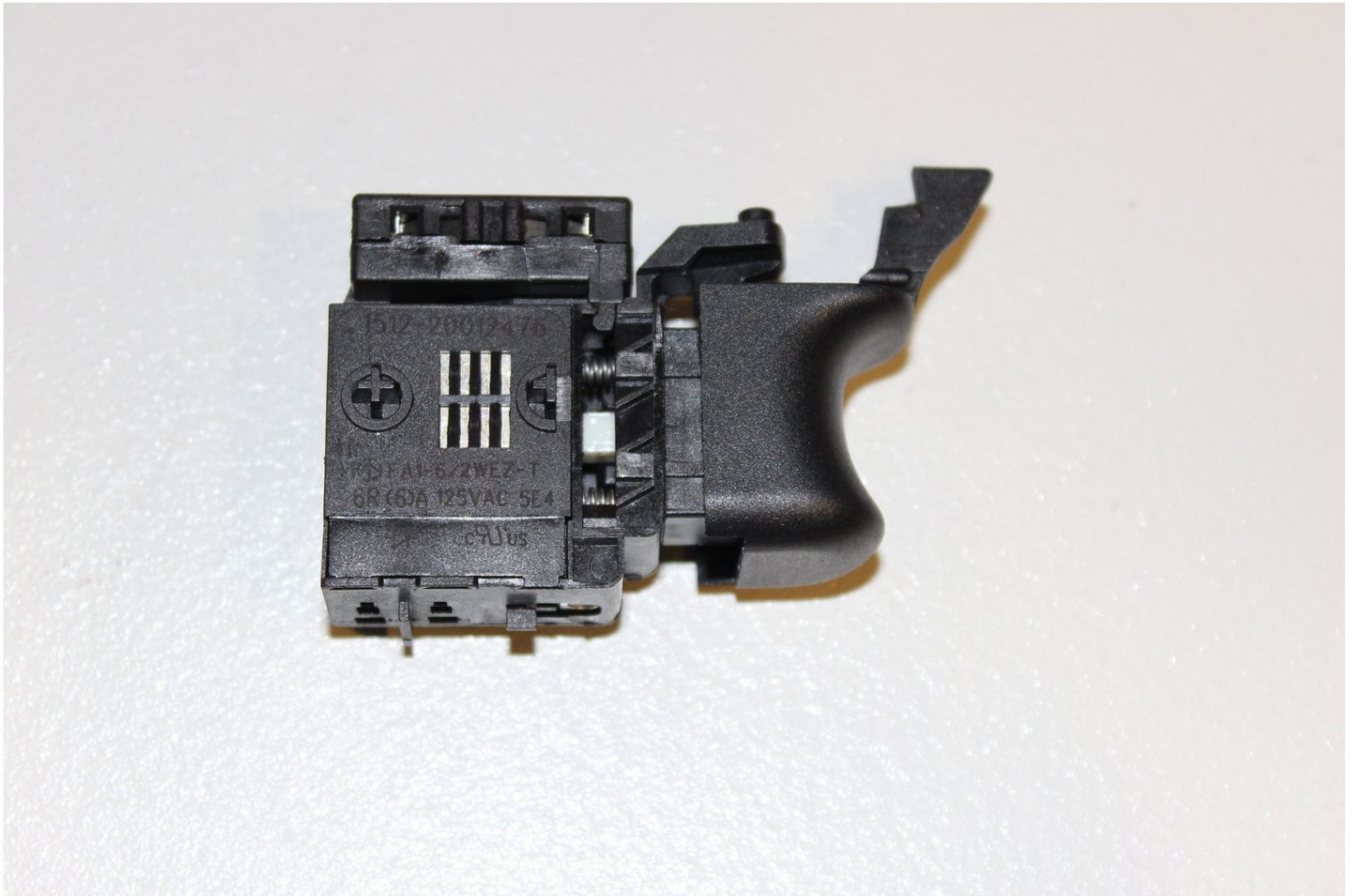




# Black and Decker BDEDMT Trigger Device Replacement

This guide is somewhat complicated. The trigger...

Written By: cayla dahl



# INTRODUCTION

This guide is somewhat complicated. The trigger is a very important device within the device. Any number of things could have gone wrong such as a faulty wire or a damaged spring. This guide requires that the fixer has experience working with small delicate parts and has patience.

## TOOLS:

Tweezers (1)

Mako Driver Kit - 64 Precision Bits (1)

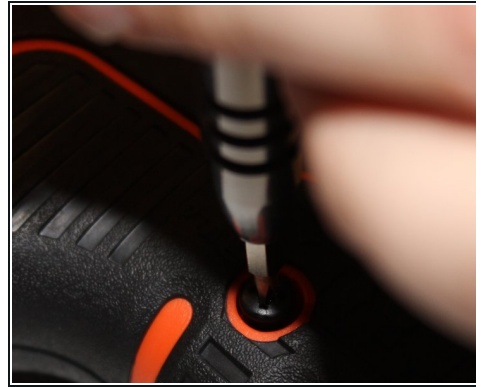
### Step 1 — Detach Matrix Attachment



 Remember to disconnect the device from all external power sources.

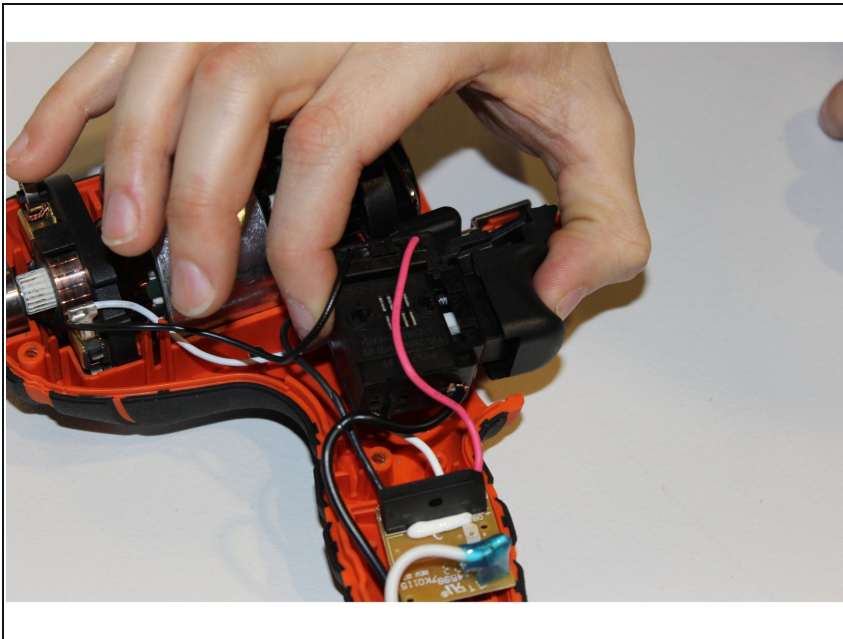
- To detach the matrix attachment piece, press down on the attachment release button located at the top of the device.
- Leaving your finger pressed down on the button, simply pull on the attachment to release it.

## Step 2 — Remove Mounting Hardware



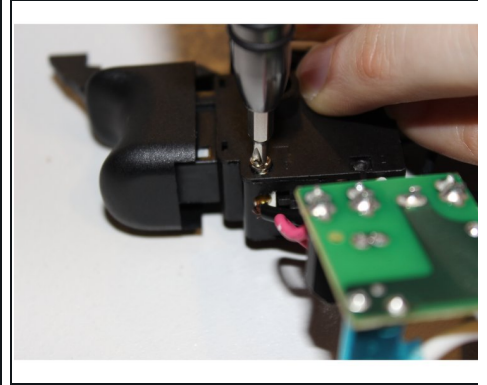
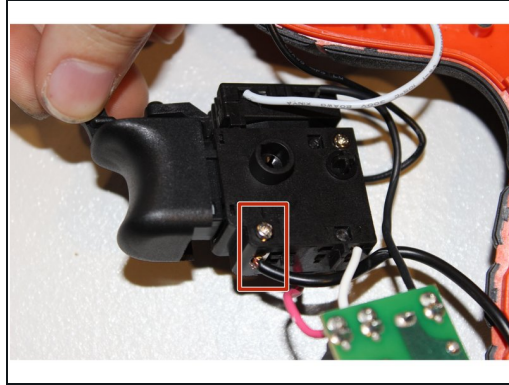
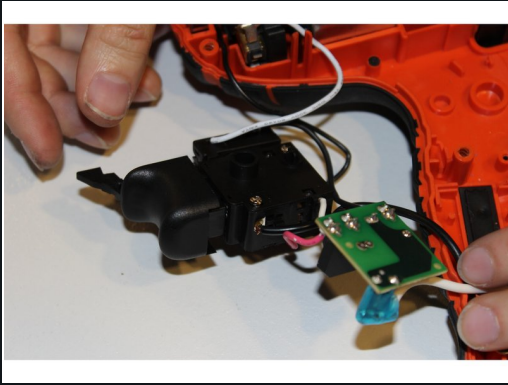
- Using a JIS 1 screwdriver, unscrew seven 19mm outer screws located on the armature.
- Using the same screwdriver, unscrew the 12mm outer screw located on the armature.


## Step 3 — Trigger Device



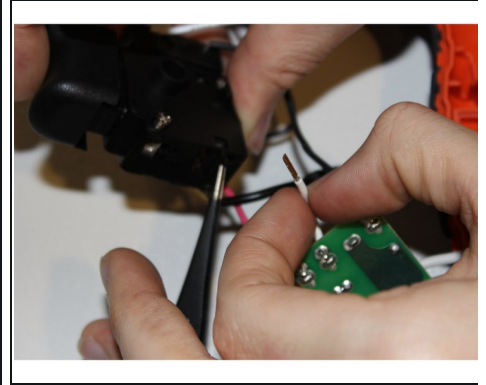
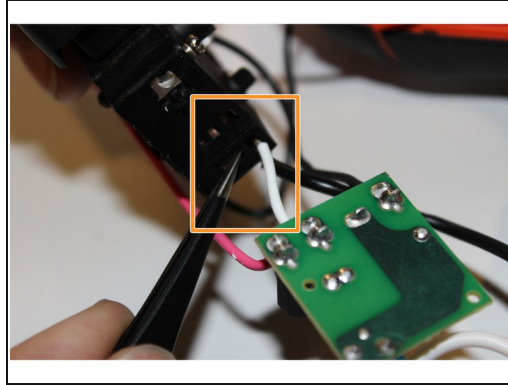
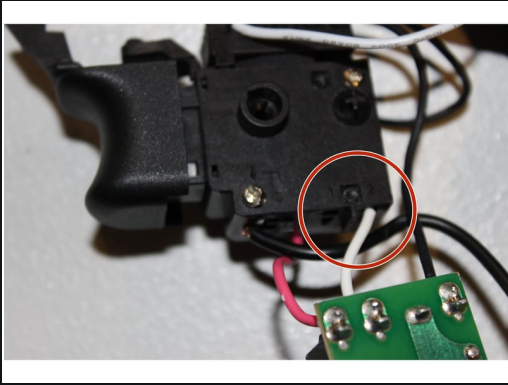
- Grab a hold of the trigger module. Gently lift the module out of the armature.
- ⓘ Be gentle with the module to ensure that the reverse switch is unaffected.

## Step 4



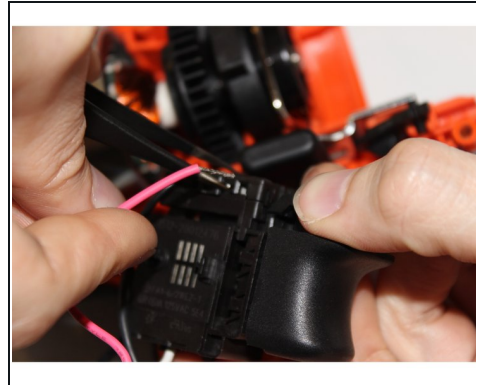
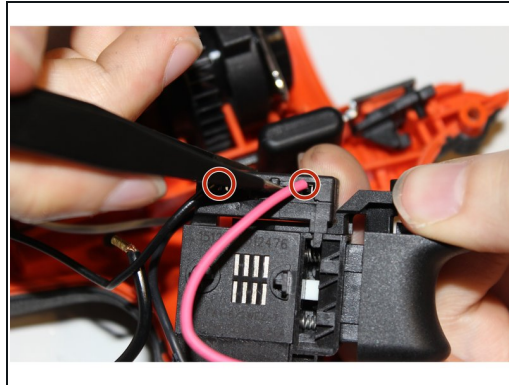
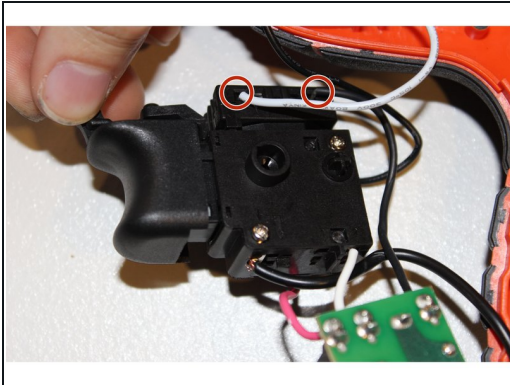
- Simply roll the trigger module onto its back.
  - Located on the bottom left of the module there will be a screw with the label 3.
  - Use your JIS 0 screwdriver. After the screw is released, gently pull out the black wire.
-  The power cord is released from the trigger module.

## Step 5



- Located on the bottom side there will be a labeled area with a number 2. Below the two there will be a short white wire.
  - Using your needle nose tweezers insert one of the ends into the release slot below the white wire.
  - ⓘ Make sure aim the tweezers toward the wire.
  - Lift the end of the tweezers to release the wire.
- ⚠ Do not force the removal of the wire.

## Step 6



- Located on the top of the trigger module you will see four more wires entering the module. There will be two thin black wires, a thin white wire and a thin red wire.
  - The steps for the removal of these four wires is the same as seen in step number five.
- ⚠ Remember to reinsert the wires to their corresponding slots when reassembling.**
- i** The trigger module is now completely free from the rest of the device and can be replaced.

To reassemble your device, follow these instructions in reverse order.