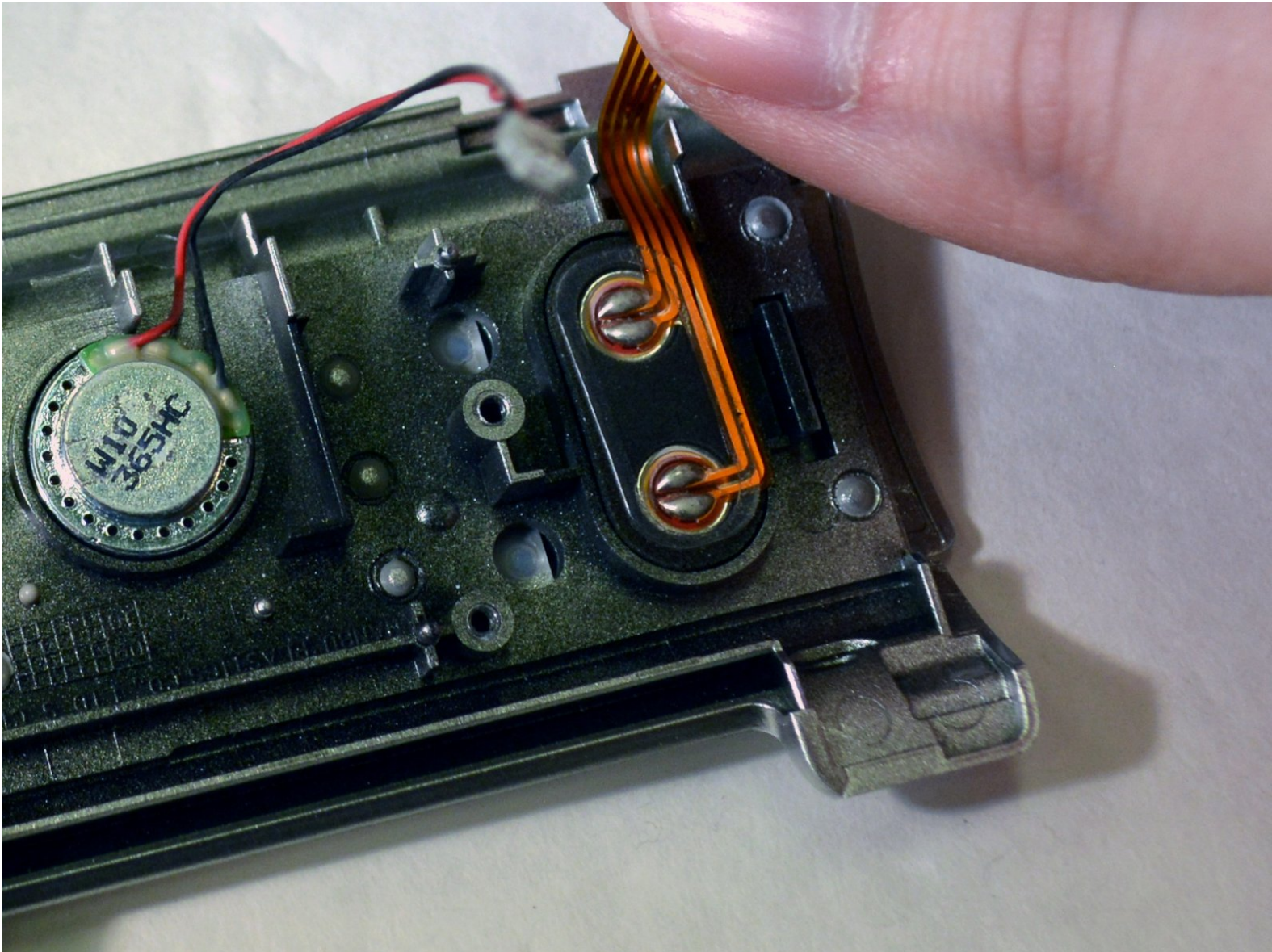




# Sony Handycam DCR-SR68 Speaker Replacement

This guide will take you through the process of replacing the speaker.

Written By: alejandro zuniga



---

## INTRODUCTION

Can't listen to recording with scratchy or without sound! Follow this speaker replacement guide to once again be able to listen those recordings.

---



### TOOLS:

- [JIS Driver Set](#) (1)
  - [Tweezers](#) (1)
  - [Spudger](#) (1)
-

## Step 1 — Speaker




⚠ Remove battery before working on device.

- Undo hand strap.
- Get iFixit screwdriver and a JIOS Philips head bit.

## Step 2



- Place device on left side with lens facing right.
- Using the screwdriver, unscrew the left middle screw.
- Open the "DC IN" tab.
-  Second screw is revealed.
- Unscrew this screw.



### Step 3



- Turn device onto it's top with the lens facing right.
  - Unscrew the top left and top right screws.
- ⓘ Right side casing is now free.

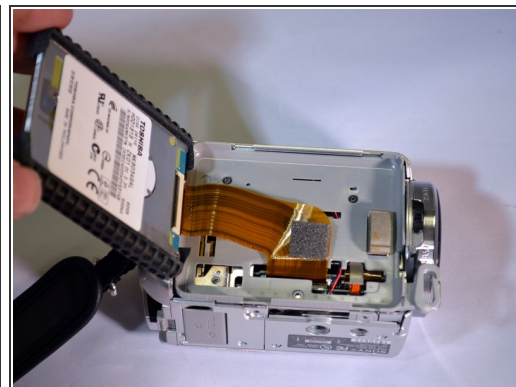
### Step 4



- Remove the right side casing by pulling away.

ⓘ HDD is now revealed.

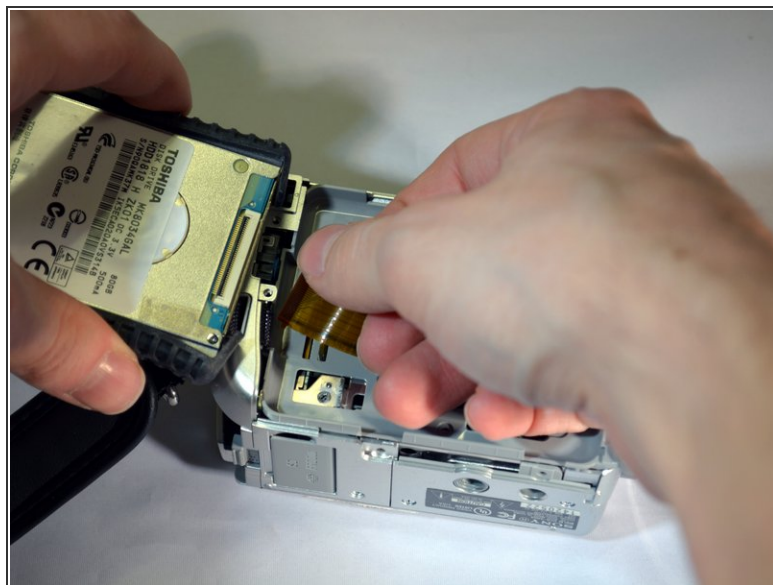
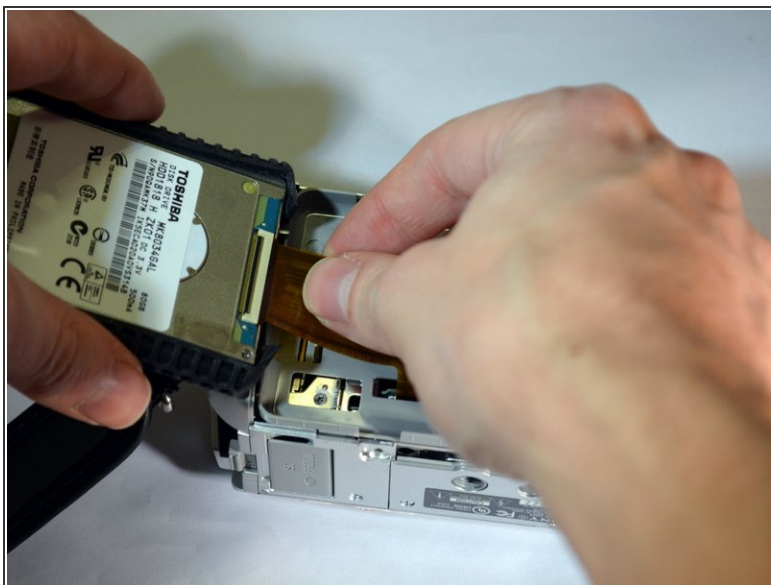
## Step 5



- Using your fingers, lift the HDD by it's right end, pivoting on it's left end.

**i** HDD ribbon wire is now exposed.

## Step 6



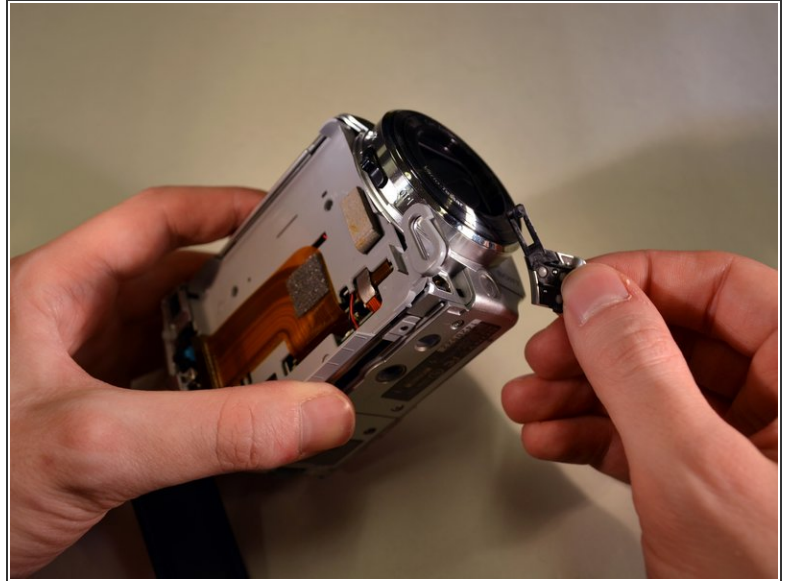
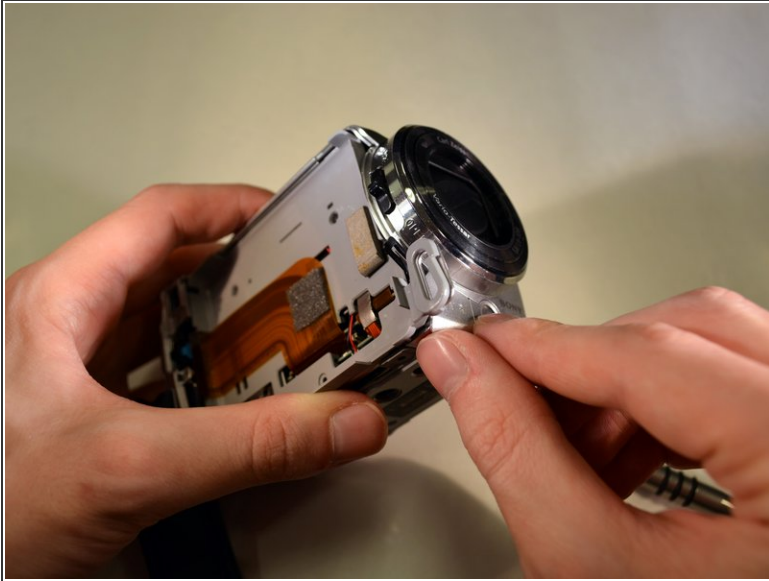
- Using your fingers, pull the ribbon wire out of it's socket.

**i** HDD is now free from device.

**i** Set HDD aside

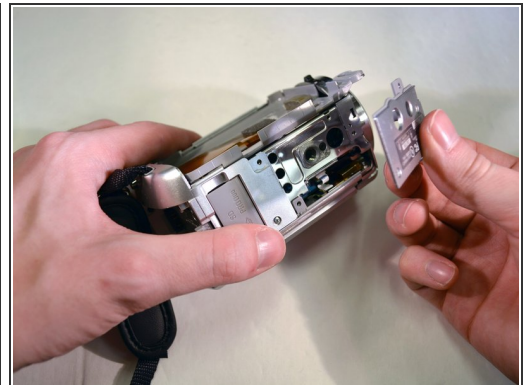


## Step 7



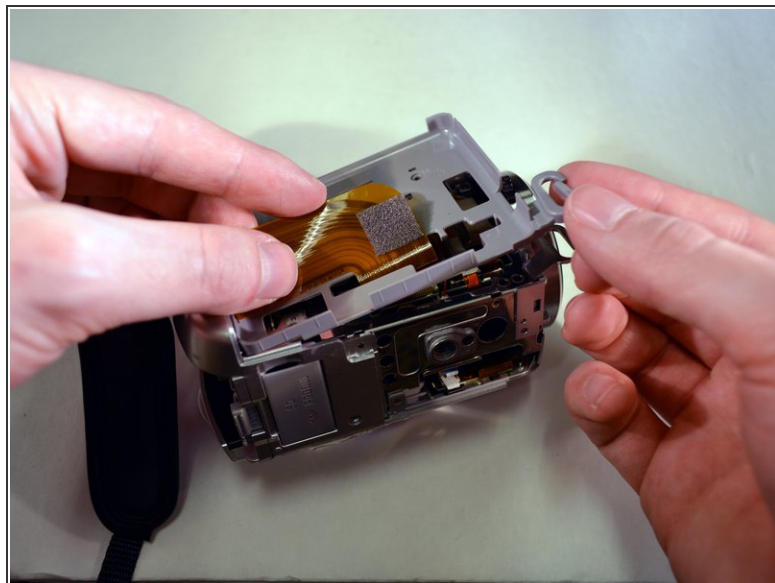
- Using your fingers, remove the A/V tab.

## Step 8



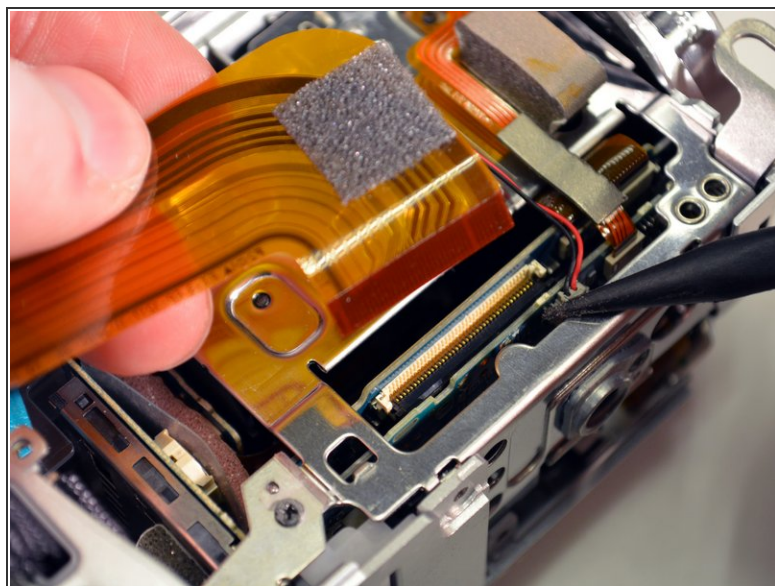
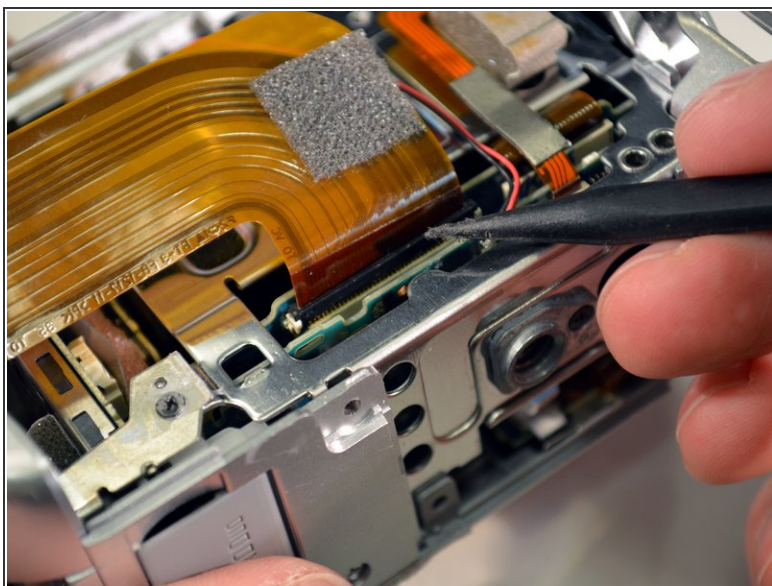
- On the bottom of the device, unscrew the right and middle bottom 3mm Philips screws.
- Remove panel.

## Step 9



- Using the screwdriver, unscrew the top two black 3mm Philips screws.
- Lift out the grey tray, being careful when feeding the large ribbon wire through the slot.

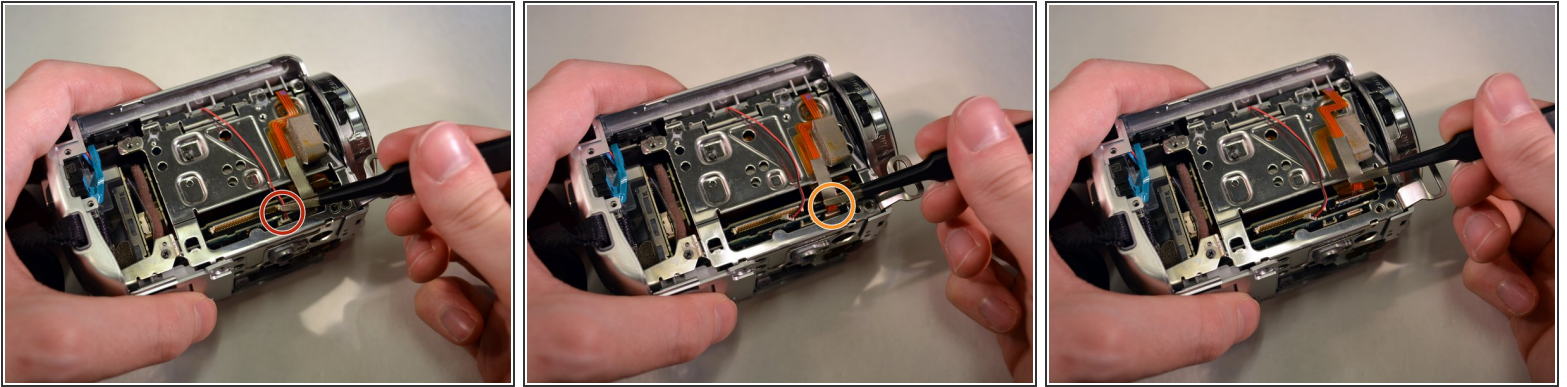
## Step 10



- Using the black pointed spudger, carefully pop up the latch on the large ribbon wire's port.
- Set large ribbon wire aside.

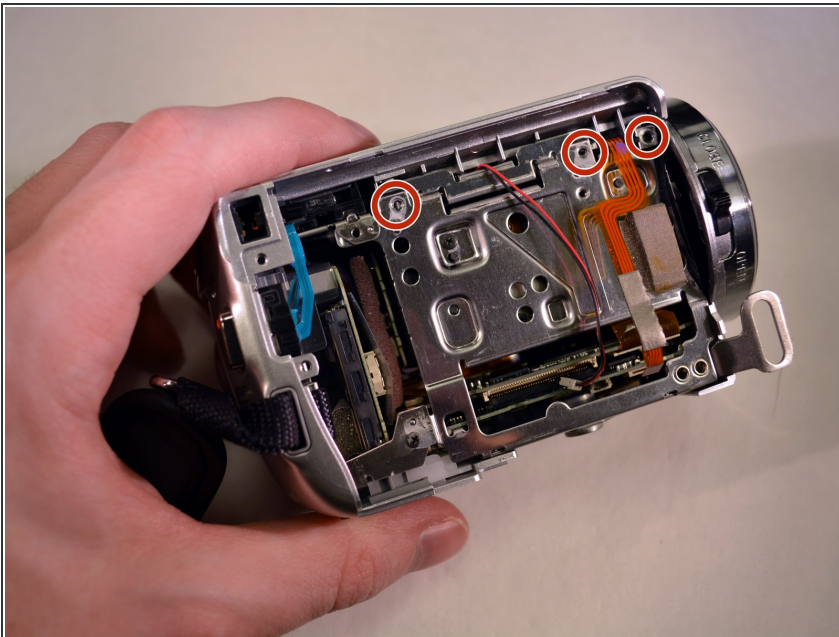


## Step 11



- Using the blunt tweezers, unplug the red and black wires.
- Using the blunt tweezers, unplug the small ribbon wire.

## Step 12



- Unscrew the top 3 3mm Philips screws from right to left.

## Step 13



- On the back of the device, unscrew the top 3mm Philips screw.

## Step 14

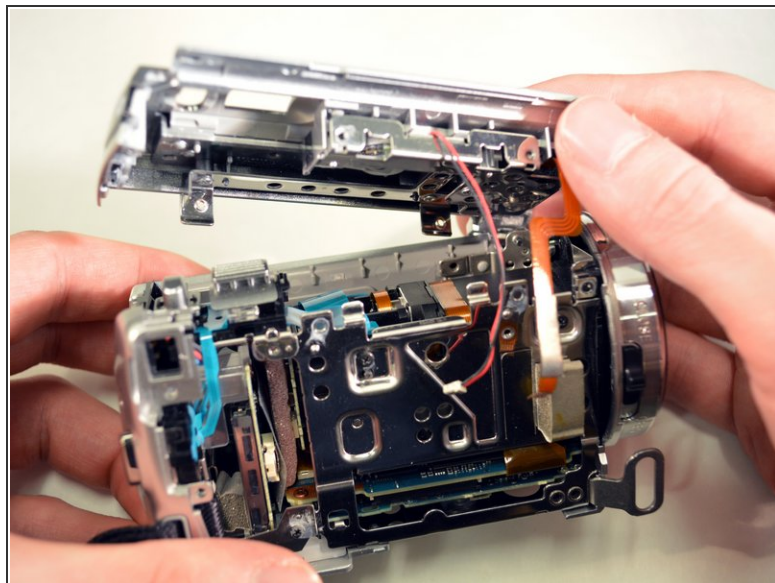
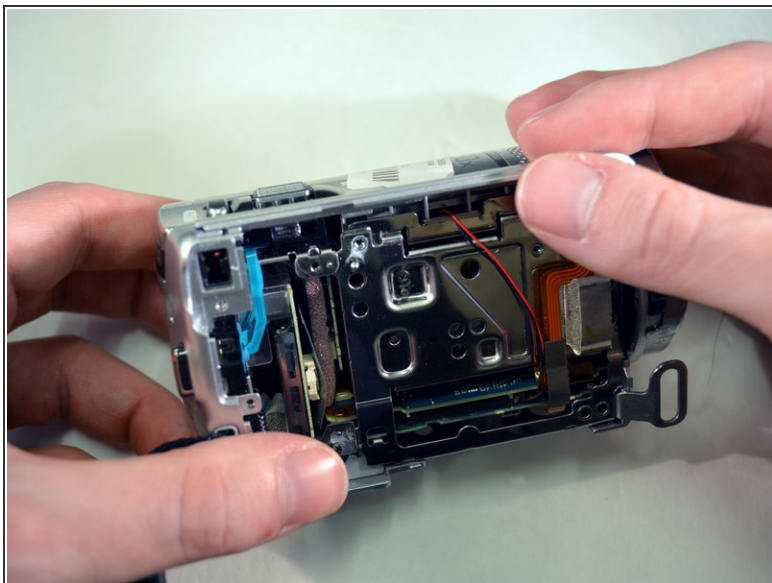


- On the left side of the device, unscrew the top 2 3mm Philips screws.

**i** The top of the device is now free.



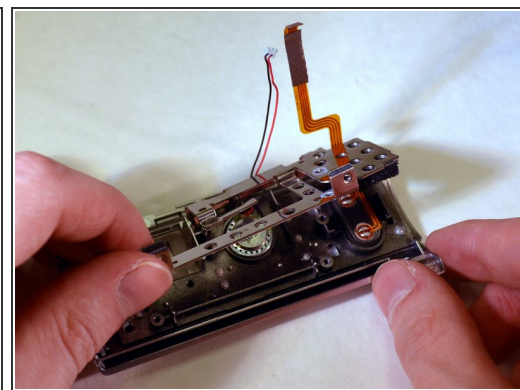
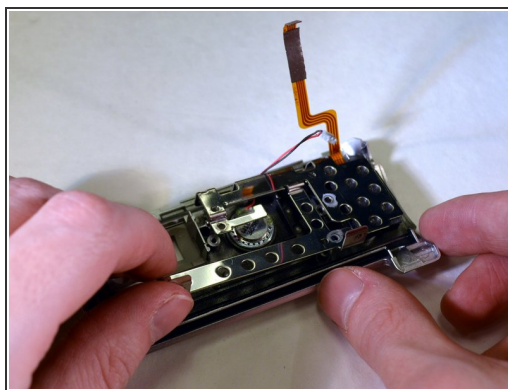
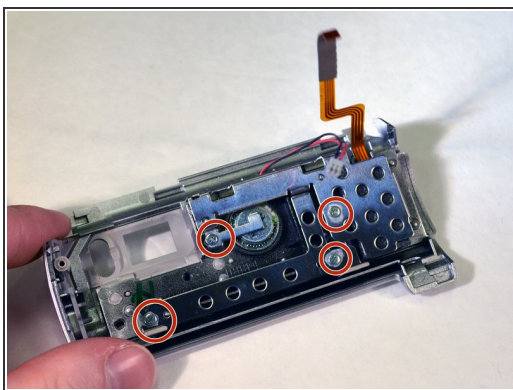
## Step 15



- Remove the top of the device by lifting it upwards.

⚠ Be careful of the wires becoming snagged on the frame.

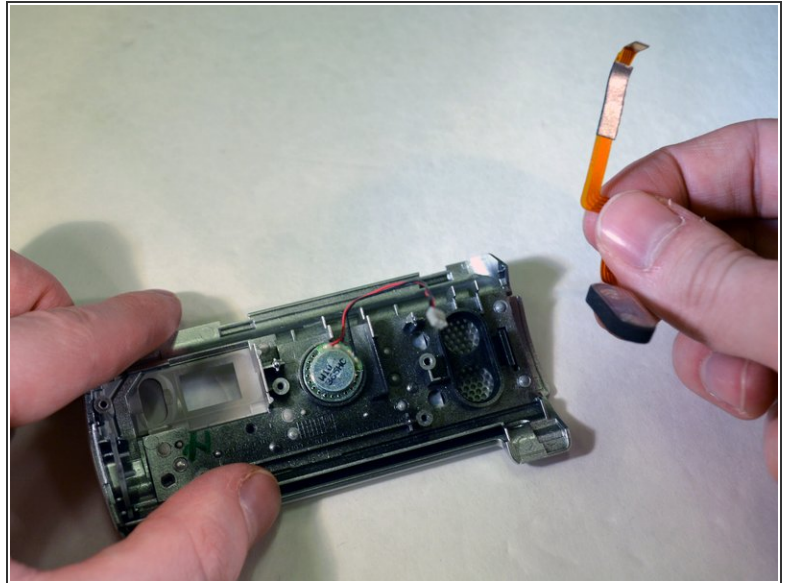
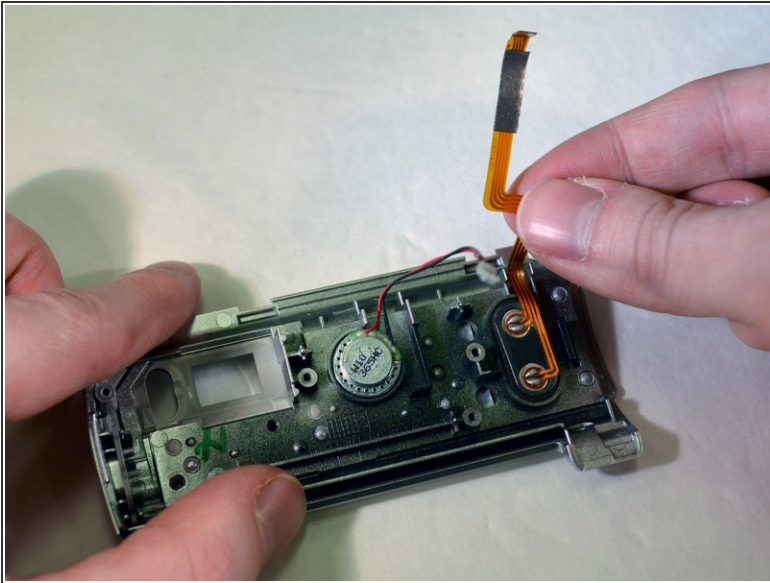
## Step 16



- With the top of the device in hand, remove the 4 visible 3mm Philips screws.
- Remove the frame by lifting away.



## Step 17



**i** The speaker is the object on the right with a ribbon wire connecting to it.

- Remove the broken speaker with your fingers.
- Replace with new speaker.

To reassemble your device, follow these instructions in reverse order.