



# Sony Handycam DCR-SR68 Hard Disk Drive (HDD) Replacement

Use this guide to replace the Hard Disk Drive.

Written By: Michael Smith



---

## INTRODUCTION

In this guide we will be removing the internal HDD of the DCR-SR68 Handycam and replacing it with a new one. This will involve removing some of the exterior casing to access the HDD.



### TOOLS:

- [JIS Driver Set](#) (1)
-

## Step 1 — Hard Disk Drive (HDD)



- Undo Hand Strap
- ⚠ Remove battery.
- Get the iFixit screwdriver and remove the extension.
- Use a JO Philips head bit.

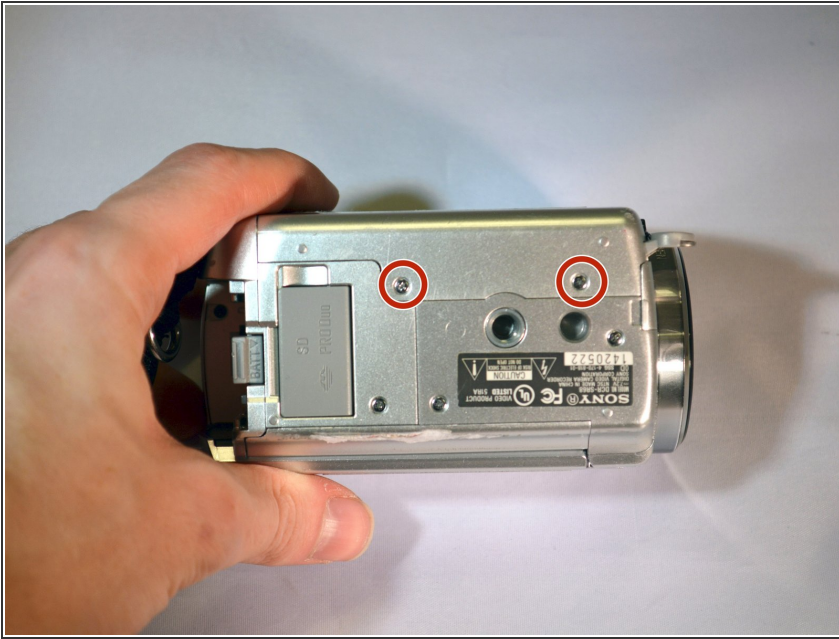
## Step 2



- Place device on left side with lens facing right.
- Using the screwdriver, unscrew the left middle 3mm Philips screw.
- Open the "DC IN" tab. (Second 3mm Philips screw is revealed)
- Unscrew this screw.



### Step 3



- Turn device over onto its top with the lens facing right.
  - Unscrew the top left and top right 3mm Philips screws.
- ⓘ The right side casing is now free.

### Step 4



- Remove the right side casing by pulling up and away.

ⓘ The HDD is now revealed.

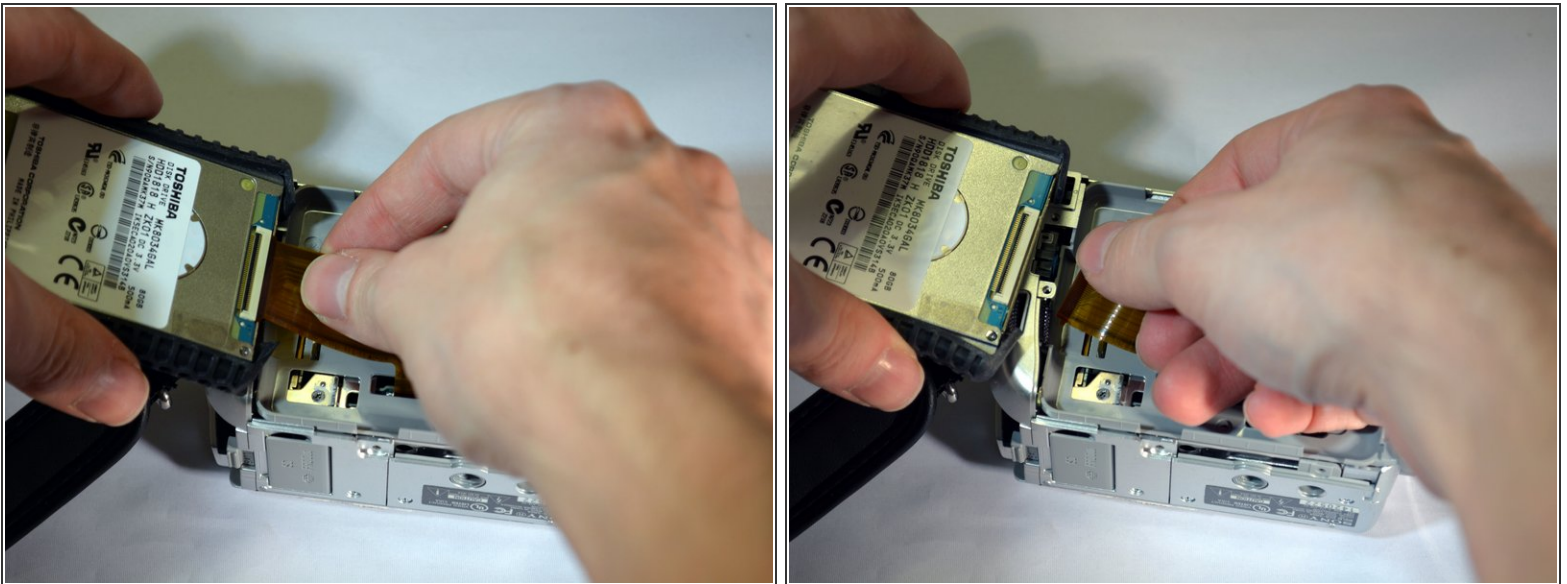
## Step 5



- Using your fingers, lift the HDD from it's right end, pivoting on it's left end.

**i** The HDD ribbon wire is now exposed.

## Step 6



- Using your fingers, gently pull the ribbon wire out of it's socket.

**i** The HDD is now free from the device.

## Step 7



- Using your fingers, pull the black rubber bumpers off of the HDD.
- Set the old HDD aside.

To reassemble your device, follow these instructions in reverse order.